

8

7

6

5

4

3

2

1



D

D

C

C

B

B

A

A

		E31KE
CABLE ASM-CHASSIS GND EXT (BLK)		133566-12-011
CABLE ASM-CHASSIS BATTERY DISCONNECT SUPPLY (RED)		141415-32-023
CABLE ASM-COACH BATTERY DISCONNECT SUPPLY (YEL)		141416-52-020
CABLE ASM-COACH BATTERY GND (BLK)		133567-12-008
CABLE ASM-GENERATOR (GRN)		141415-42-080
CABLE ASM-GENERATOR GND (BLK)		133566-12-008
LEVELING SYSTEM POWER CABLE (BLU)	60M	141415-29-020
LEVELING SYSTEM GND CABLE (BLK)	60M	133566-12-008
CABLE ASM-STARTER (RED)		141416-32-010
CABLE ASM-COACH BATTERY FUSE		141416-52-003
CABLE ASM-CHASSIS BATTERY FUSE		141415-32-003

- 60M HYDRAULIC LEVEL JACKS-AUTO
- 265 CODES/STANDARDS-CSA/CMVSS
- 1B1 CODES/STANDARDS USA

- 1B1 265



DSNR:		ALL DIMENSIONS ARE IN MILLIMETERS	
DFFR:		MATERIAL:	
UNSPECIFIED TOLERANCES:			
WHOLE DIM (X)	: 3		
ONE-PLACE (X.X)	: 1.5		
TWO-PLACE (X.XX)	: 0.50		
ANGLE	: 1°		

FOR ELECTRICAL TORQUE SPECIFICATIONS SEE DWG NO. 128783-01-000

FOR ELECTRICAL CALLOUTS SEE DWG NO. 121339-01-000

REFER TO ES0018 FOR FASTENER TIGHTENING GUIDELINES

WEIGHT: (LBS) FIRST USED: 17 E31KE

DESCRIPTION: BATTERY INSTL

SHEET: 1 OF 4 ITEM/PART NO: 000215346 / 30366901000 REV

8

7

6

5

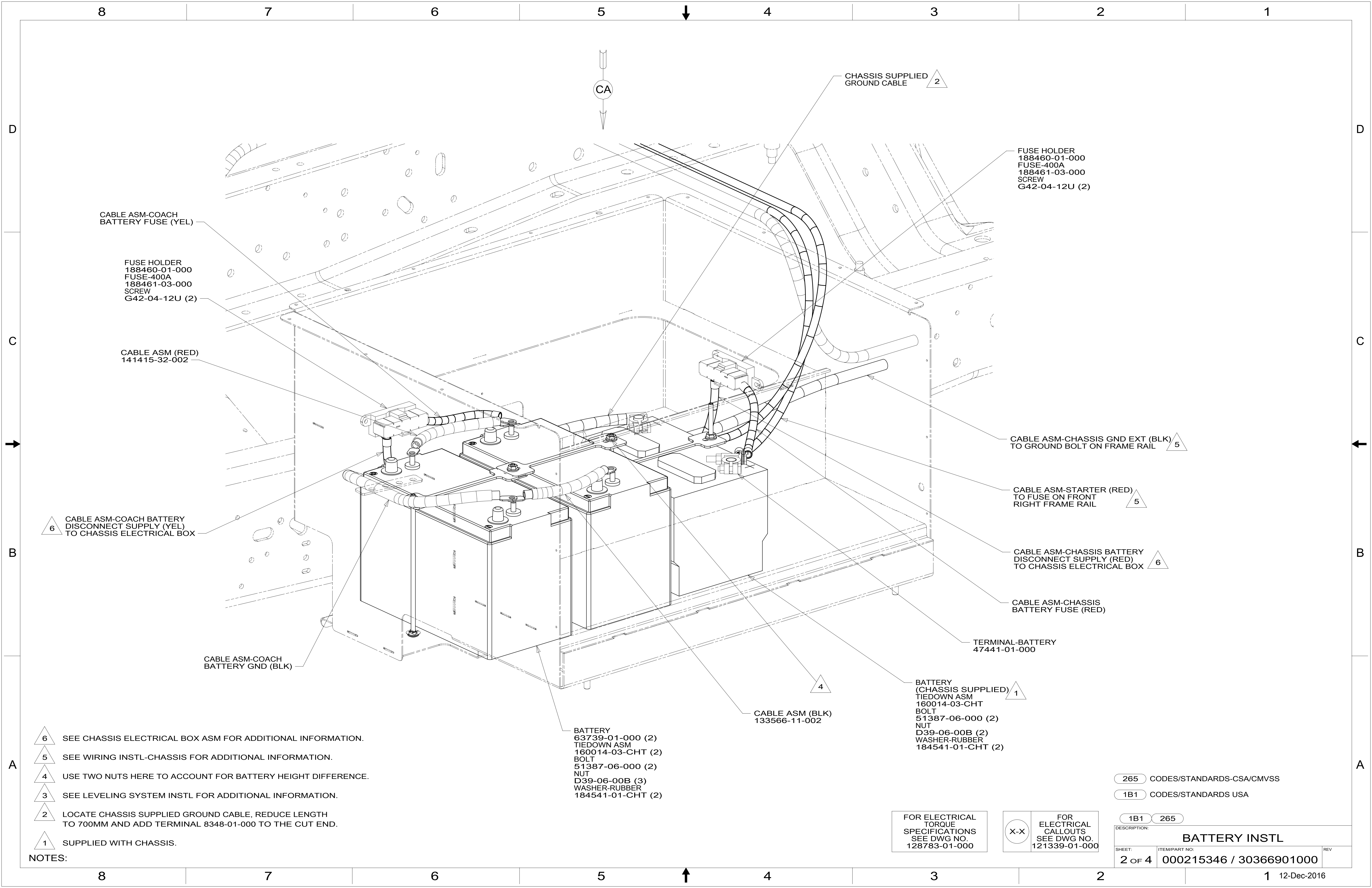
4

3

2

1





CABLE ASM-COACH  
BATTERY FUSE (YEL)

FUSE HOLDER  
188460-01-000  
FUSE-400A  
188461-03-000  
SCREW  
G42-04-12U (2)

CABLE ASM (RED)  
141415-32-002

6 CABLE ASM-COACH BATTERY  
DISCONNECT SUPPLY (YEL)  
TO CHASSIS ELECTRICAL BOX

CABLE ASM-COACH  
BATTERY GND (BLK)

CHASSIS SUPPLIED  
GROUND CABLE 2

FUSE HOLDER  
188460-01-000  
FUSE-400A  
188461-03-000  
SCREW  
G42-04-12U (2)

5 CABLE ASM-CHASSIS GND EXT (BLK)  
TO GROUND BOLT ON FRAME RAIL

5 CABLE ASM-STARTER (RED)  
TO FUSE ON FRONT  
RIGHT FRAME RAIL

6 CABLE ASM-CHASSIS BATTERY  
DISCONNECT SUPPLY (RED)  
TO CHASSIS ELECTRICAL BOX

CABLE ASM-CHASSIS  
BATTERY FUSE (RED)

TERMINAL-BATTERY  
47441-01-000

1 BATTERY  
(CHASSIS SUPPLIED)  
TIEDOWN ASM  
160014-03-CHT  
BOLT  
51387-06-000 (2)  
NUT  
D39-06-00B (2)  
WASHER-RUBBER  
184541-01-CHT (2)

4 CABLE ASM (BLK)  
133566-11-002

BATTERY  
63739-01-000 (2)  
TIEDOWN ASM  
160014-03-CHT (2)  
BOLT  
51387-06-000 (2)  
NUT  
D39-06-00B (3)  
WASHER-RUBBER  
184541-01-CHT (2)

- NOTES:
- 6 SEE CHASSIS ELECTRICAL BOX ASM FOR ADDITIONAL INFORMATION.
  - 5 SEE WIRING INSTL-CHASSIS FOR ADDITIONAL INFORMATION.
  - 4 USE TWO NUTS HERE TO ACCOUNT FOR BATTERY HEIGHT DIFFERENCE.
  - 3 SEE LEVELING SYSTEM INSTL FOR ADDITIONAL INFORMATION.
  - 2 LOCATE CHASSIS SUPPLIED GROUND CABLE, REDUCE LENGTH TO 700MM AND ADD TERMINAL 8348-01-000 TO THE CUT END.
  - 1 SUPPLIED WITH CHASSIS.

265 CODES/STANDARDS-CSA/CMVSS

1B1 CODES/STANDARDS USA

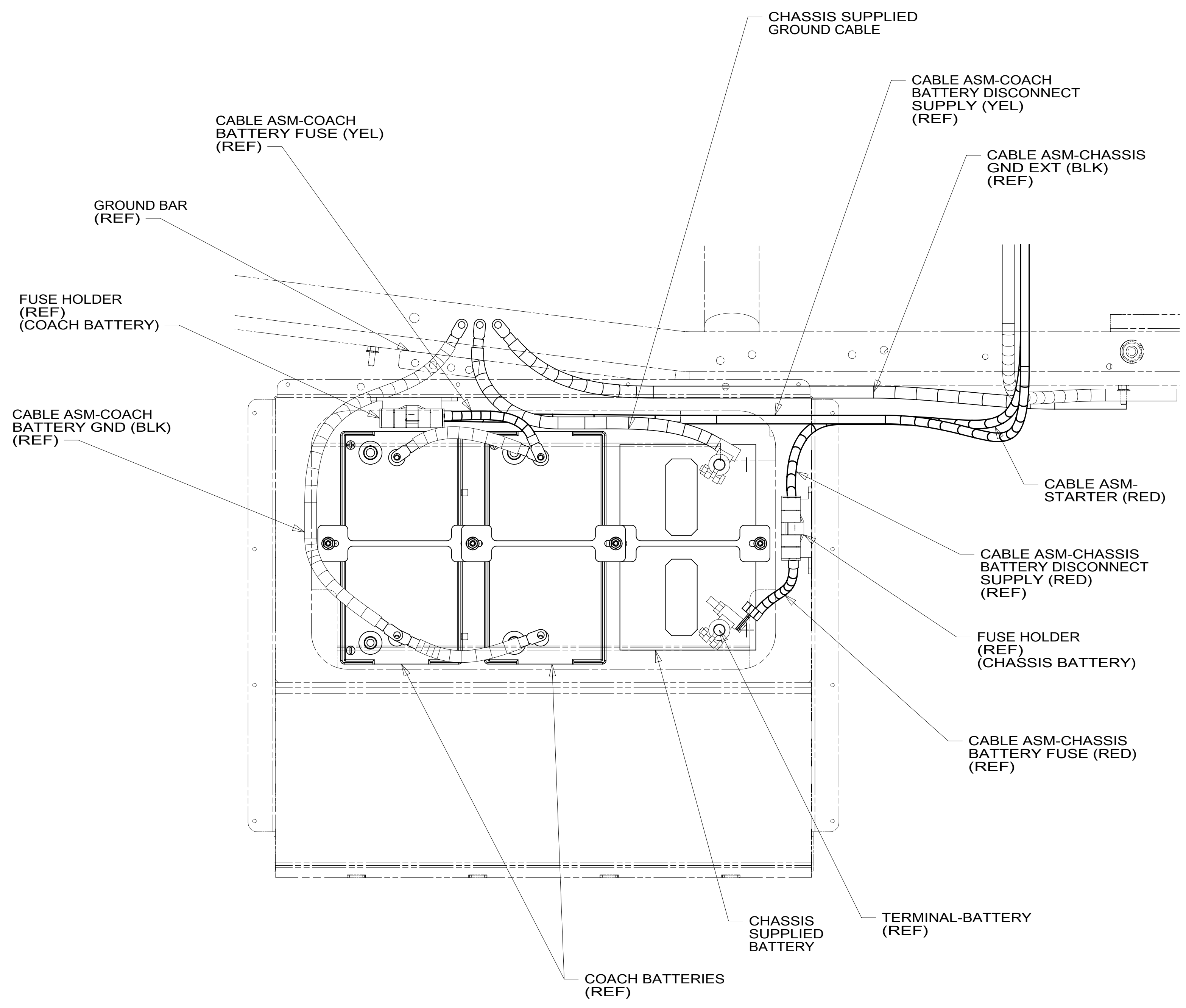
FOR ELECTRICAL  
TORQUE  
SPECIFICATIONS  
SEE DWG NO.  
128783-01-000

FOR  
ELECTRICAL  
CALLOUTS  
SEE DWG NO.  
121339-01-000

DESCRIPTION:	1B1 265	
<b>BATTERY INSTL</b>		
SHEET:	ITEM/PART NO:	REV
2 OF 4	000215346 / 30366901000	

8 7 6 5 4 3 2 1

D  
C  
B  
A



VIEW CA

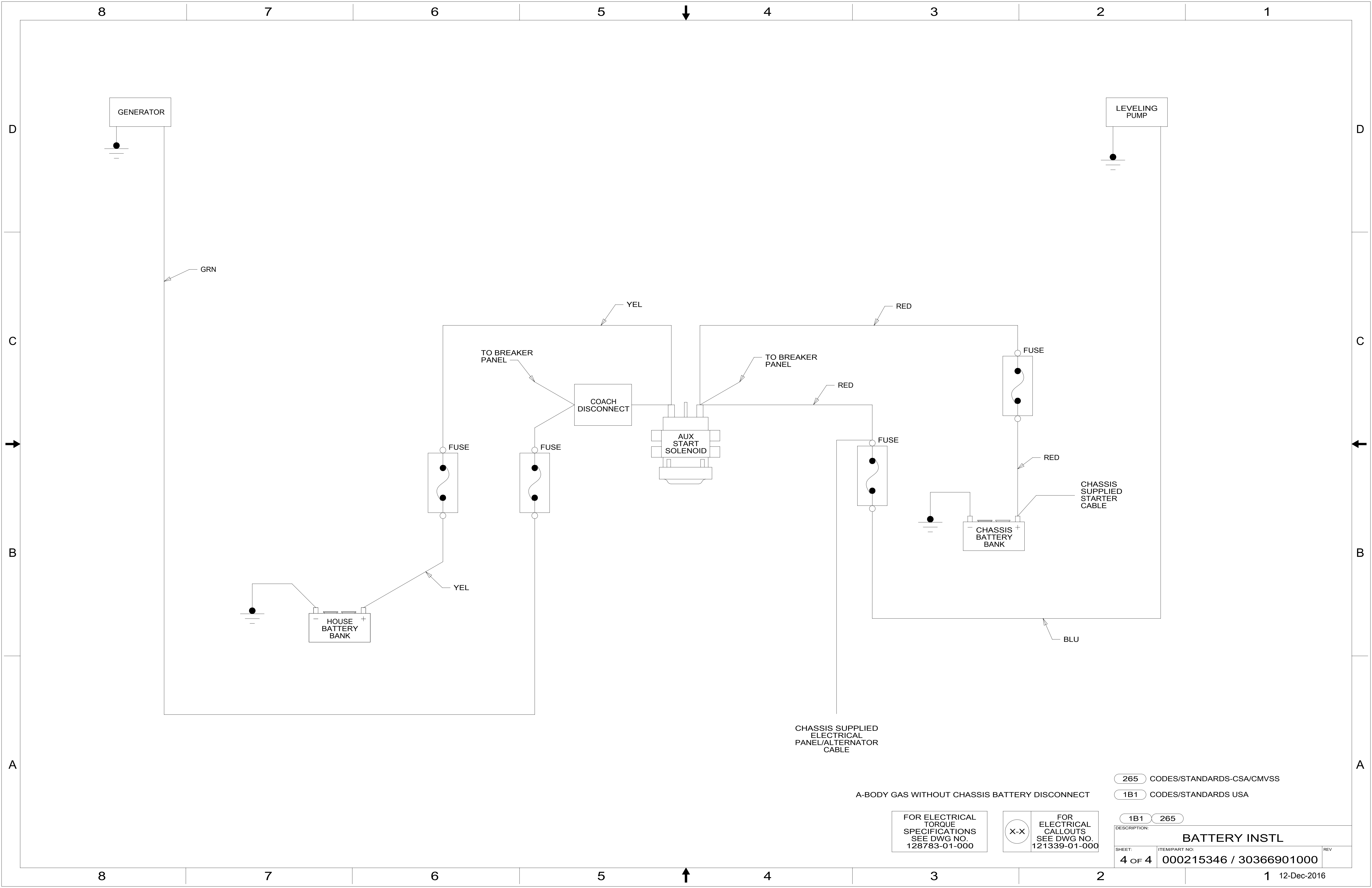
265 CODES/STANDARDS-CSA/CMVSS  
 1B1 CODES/STANDARDS USA

FOR ELECTRICAL TORQUE SPECIFICATIONS SEE DWG NO. 128783-01-000

FOR ELECTRICAL CALLOUTS SEE DWG NO. 121339-01-000

DESCRIPTION:		1B1 265	
<b>BATTERY INSTL</b>			
SHEET:	ITEM/PART NO.:	REV	
3 OF 4	000215346 / 30366901000		

8 7 6 5 4 3 2 1 12-Dec-2016



A-BODY GAS WITHOUT CHASSIS BATTERY DISCONNECT

FOR ELECTRICAL TORQUE SPECIFICATIONS SEE DWG NO. 128783-01-000

FOR ELECTRICAL CALLOUTS SEE DWG NO. 121339-01-000

- 265 CODES/STANDARDS-CSA/CMVSS
- 1B1 CODES/STANDARDS USA

DESCRIPTION:		1B1 265	
<b>BATTERY INSTL</b>			
SHEET:	ITEM/PART NO.:	REV	
4 OF 4	000215346 / 30366901000		