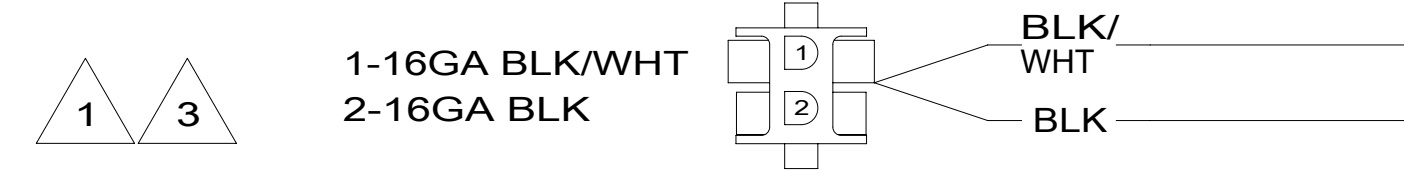
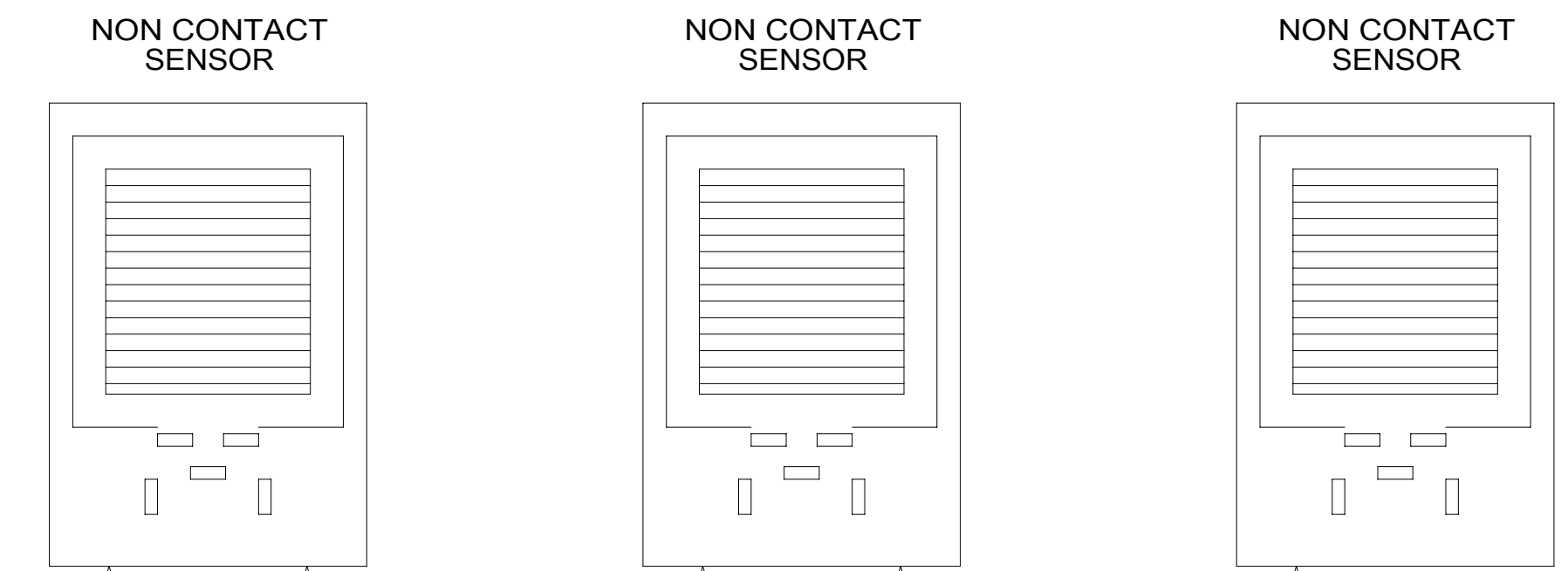


WIRING DIAGRAM-TANK,WATER  
OR  
WIRING DIAGRAM-TANK,MAIN  
(WIRE ASM-151316 REV A)



WIRING DIAGRAM-AUX HOLDING  
(WIRE ASM-151317 REV A)

- NOTES:
- 3 IF TWO MONITOR PANELS ARE UTILIZED THIS WIRE ASM CONNECTS TO WIRE ASM-TANK,DIODE PACK 151808-01 SHT2.
  - 2 IF TWO MONITOR PANELS ARE UTILIZED THIS WIRE ASM CONNECTS TO WIRE ASM-TANK,DIODE PACK 151808-02 SHT2.
  - 1 IF ONLY ONE MONITOR PANEL IS USED SEE WIRING DIAGRAM-BODY FOR ADDITIONAL INFORMATION.

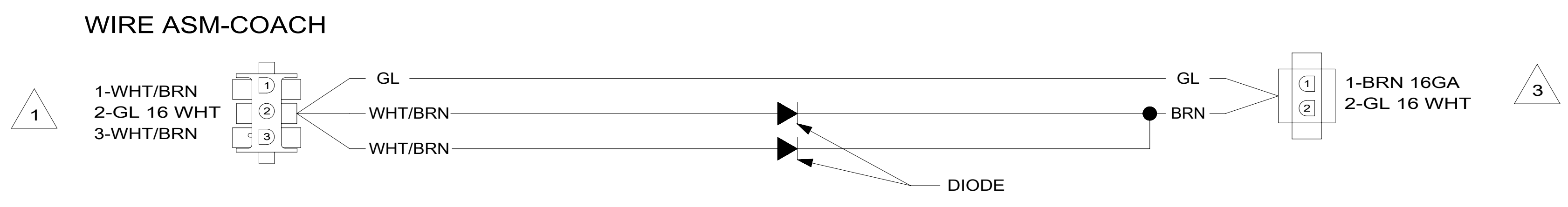
**WINNEBAGO**<sup>®</sup>  
COPYRIGHT 2016 WINNEBAGO INDUSTRIES, INC.

DSNR:	ALL DIMENSIONS ARE IN MILLIMETERS	
DFFR:	MATERIAL:	
UNSPECIFIED TOLERANCES:	WEIGHT: (LBS)	FIRST USED:
WHOLE DIM (X) ±		
ONE-PLACE (X.X) ±		
TWO-PLACE (X.XX) ±		
ANGLE ±		
REFER TO ES0018 FOR FASTENER TIGHTENING GUIDELINES		
DESCRIPTION: <b>WIRING DIAGRAM-HOLDING TANKS</b>		
SHEET: 1 OF 2	ITEM/PART NO: 000200447 / 30013501000	REV
REF:		1 05-Dec-2016

8 7 6 5 4 3 2 1

D

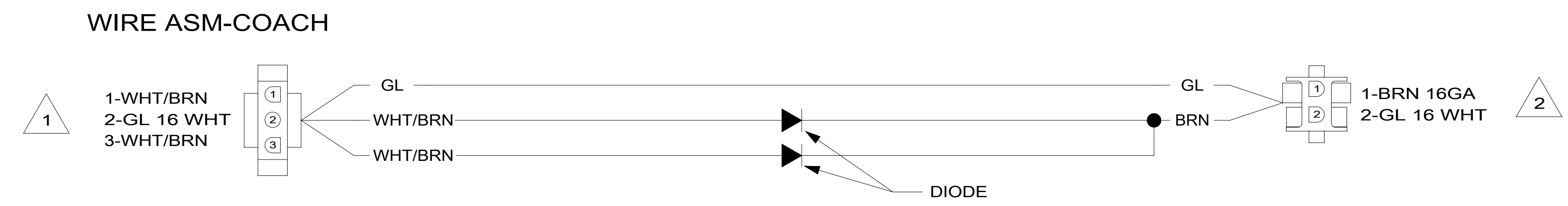
D



**WIRING DIAGRAM-TANK,DIODE PACK**  
151808-01-000 REV A

C

C



**WIRING DIAGRAM-TANK,DIODE PACK**  
151808-02-000 REV A

B

B

- NOTES:**
- 3 CONNECT TO WIRE ASM-TANK,AUX. SEE SHT 1.
  - 2 CONNECT WIRE ASM-TANK,WATER OR MAIN. SEE SHT 1.
  - 1 SEE WIRING DIAGRAM-BODY FOR ADDITIONAL INFORMATION.

DESCRIPTION: <b>WIRING DIAGRAM-HOLDING TANKS</b>		
SHEET: 2 OF 2	ITEM/PART NO: 000200447 / 30013501000	REV

8 7 6 5 4 3 2 1 05-Dec-2016

A

A