

- NOTES:
1. 110V WIRE TO BE CLAMPED WITH CLAMP 10497-05-000 WITHIN 200MM OF OUTLET BOXES, USE SCREW G67-10-12B.
 2. ALL WIRES TO BE SECURED WITH CLAMP 10495-01-000 OR CLIP 80734-01-000 EVERY 600MM. USE SCREW G67-10-12B UNLESS OTHERWISE SPECIFIED.
 3. WHERE WIRES PASS THROUGH HOLES IN STEEL AND NOT OTHERWISE PROTECTED, USE GROMMET 92908-02-000.

FOR ELECTRICAL TORQUE SPECIFICATIONS SEE DWG NO. 128783-01-000

FOR ELECTRICAL CALLOUTS SEE DWG NO. 121339-01-000

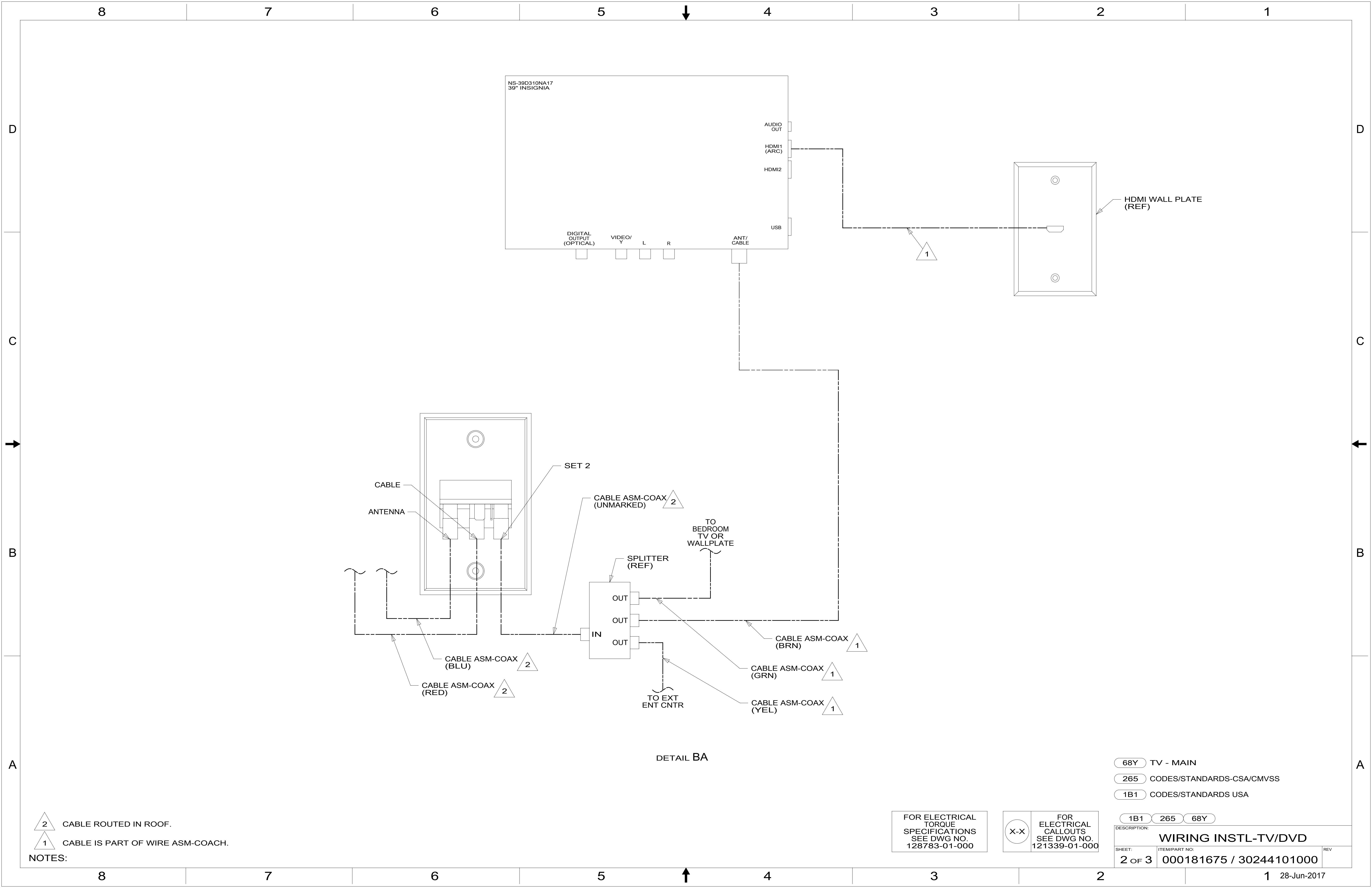
265 CODES/STANDARDS-CSA/CMVSS

1B1 CODES/STANDARDS USA

1B1 265

WINNEBAGO
COPYRIGHT 2016 WINNEBAGO INDUSTRIES, INC.

DSNR:	ALL DIMENSIONS ARE IN MILLIMETERS	
DFFR:		
UNSPECIFIED TOLERANCES:	MATERIAL:	
WHOLE DIM (X) : 3		
ONE-PLACE (X.X) : 1.5		
TWO-PLACE (X.XX) : 0.50		
ANGLE : 1°		
REFER TO ES0018 FOR FASTENER TIGHTENING GUIDELINES	WEIGHT: (LBS)	FIRST USED:
		17 E29VE
DESCRIPTION: WIRING INSTL-TV/DVD		
SHEET: 1 OF 3	ITEM/PART NO: 000181675 / 30244101000	REV:
	REF:	1 28-Jun-2017



NOTES:

2 CABLE ROUTED IN ROOF.

1 CABLE IS PART OF WIRE ASM-COACH.

FOR ELECTRICAL TORQUE SPECIFICATIONS SEE DWG NO. 128783-01-000

FOR ELECTRICAL CALLOUTS SEE DWG NO. 121339-01-000

- 68Y TV - MAIN
- 265 CODES/STANDARDS-CSA/CMVSS
- 1B1 CODES/STANDARDS USA

DESCRIPTION:		
1B1 265 68Y		
WIRING INSTL-TV/DVD		
SHEET:	ITEM/PART NO.:	REV
2 OF 3	000181675 / 30244101000	

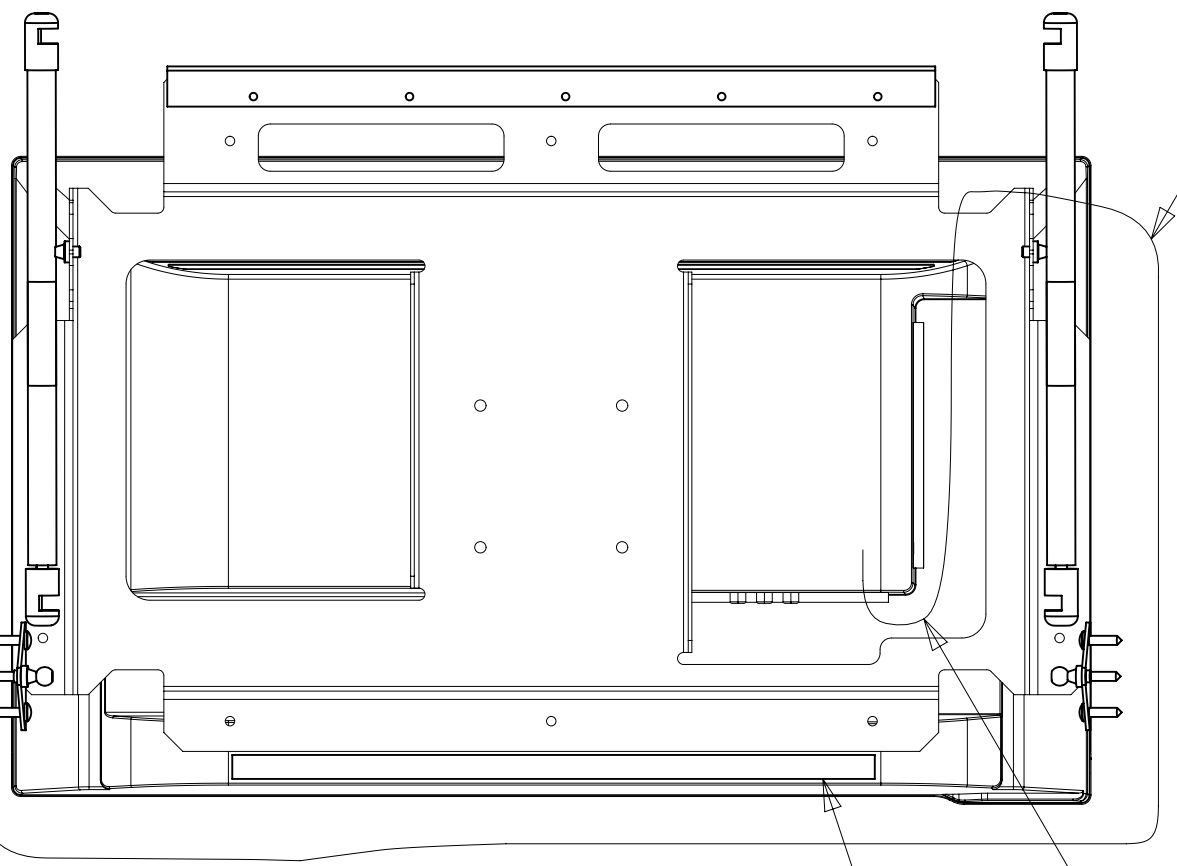
8 7 6 5 4 3 2 1

BACKWALL ASM
(REF)

SIDEWALL ASM-LEFT
(REF)

BRACKET ASM-MOUNT.TV
000013931 / 312679-01-CHT
SCREW
G67-10-12U (6)

CB



VIEW CB

CABLE ASM-CAOX
87105-08-018
(GRN)
SLEEVE-BRAIDING
139049-02-000
(400 MM)

ADAPTER
82134-01-000

TAPE-FOAM
76322-21-00
(340 MM)

CA

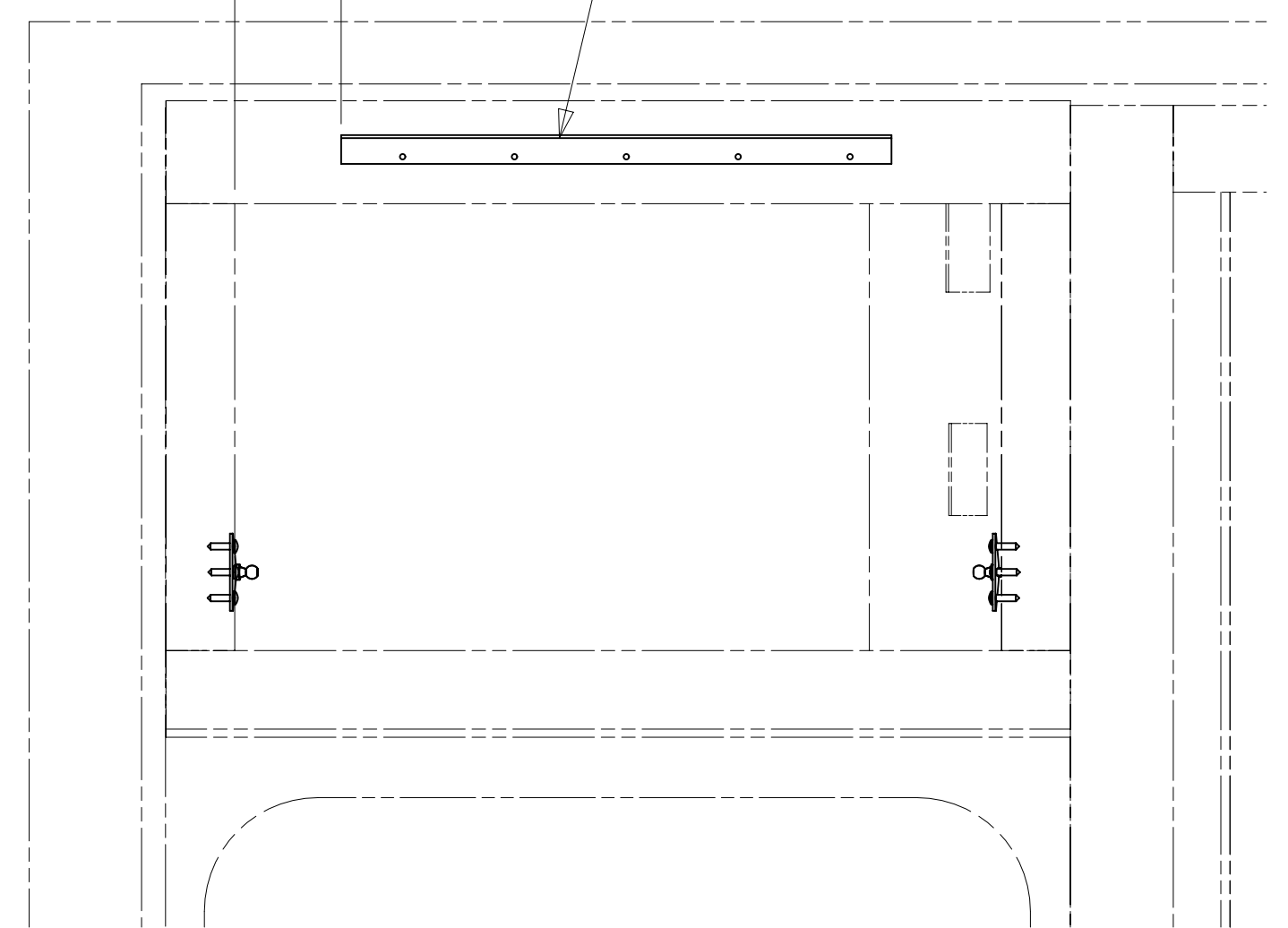
SPRING-GAS
142569-31-000 (2)

BRACKET-GAS SPRING
126263-15-CHT (2)
SCREW
G67-10-12U (6)

TV-24" FLAT PANEL DLED,HDTV
000031269 / 316937-01-000
SCREW (VESA MOUNT)
OMG02U-06-010 (4)
SCREW (LOWER MOUNT)
SUPPLIED WITH TV

HINGE-PIANO, 1.50
(REF)
SCREW
G67-10-12U (10)

79



VIEW CA
(TV NOT SHOWN)

2 CLEAN AND APPLY ADHESIVE PROMOTER 87211-01-000 TO BOTH SURFACES AND BOND WHERE TV CONTACTS CABINET.

1 USE TIE-WIRE 8343-04-000 TO ATTACH WIRE ASM TO HOLES IN BRACKET.

NOTES:

FOR ELECTRICAL TORQUE SPECIFICATIONS SEE DWG NO. 128783-01-000

FOR ELECTRICAL CALLOUTS SEE DWG NO. 121339-01-000

- 68X TV - BEDROOM
- 265 CODES/STANDARDS-CSA/CMVSS
- 1B1 CODES/STANDARDS USA

DESCRIPTION: WIRING INSTL-TV/DVD		
SHEET: 3 OF 3	ITEM/PART NO: 000181675 / 30244101000	REV

8 7 6 5 4 3 2 1 28-Jun-2017