

2012 VIA®



Models: 25T, 25Q, and 25R (Revised)

Floorplans

- ◆ 25T (Carryover)
- ◆ **25R** (Revised With **New Optional Dinette**)
- ◆ 25Q (Carryover)

Exterior Features

1. Two New Deluxe Exterior Graphics Packages (Standard).
2. Four Full-Body Paint Packages.
3. DEF tank is smaller and located in the engine compartment; "frees up" exterior storage next to the entrance door.
4. Large Mercedes-Benz® "Star" emblem in the front grille area.

Interior Features

1. Color Ways: "Prism," "Rio Grande," and "Echo."
2. Two Wood Colors: Sunset Cherry and Mocha Cherry.
3. **H25R** Floorplan has Been Updated.
 - a. **Dinette option** (#14W) replaces sofa and provides a 38" x 69" sleeping space.
 - b. Raised refrigerator door will clear the bed with the room retracted.
4. New standard single-pane glass windows with MCD American Duo® solar/blackout shades. (Reduces base price.)
5. Dual-pane acrylic awning windows will remain as an option (#13Y). They will include the insulated shade/screen and integrated window treatment.
6. New galley sink with deeper bowl on all models.
7. New 2-burner range with a large burner to accommodate a 13" pan.
8. New Optional XCite™ Dash Radio (#15D).
 - a. Includes Bluetooth™ capability to connect to the user's cellular phone providing hands-free operation.
 - b. Includes turn-by-turn GPS navigation with maps of USA and Canada.
 - c. 7" screen displays side-/rearview cameras and includes split-screen capability. Customer Benefit – Side-/rearview camera image and navigation screen can be viewed at the same time.
 - d. Plays DVDs.
 - e. iPod and USB connections.

Threshold™ RV Door System – Improved Through Customer Surveys

1. **New!** Sliding retractable screen door.
2. **New!** Soft-touch exterior assist handle next to the entrance door.
3. Large handle on the door changed to a smaller recessed, spring-loaded handle.
4. **New!** Interior assist handle.
5. **New!** Step box carpet replaced by easy-to-clean LINE-X®.
6. Added removable rod to hold the door open.

Electrical System Updates/Revisions

1. New Standard LED Ceiling Lights – Reduce energy consumption by 70 percent to extend battery life while dry camping. They run much cooler than halogen fixtures while providing the same warm white light.
2. New Standard Onan® 3,600-Watt LP Generator – Reduces base price while providing an extra 400 watts of power. Onan 3,200-watt diesel generator remains available as an option (#33F).
3. New Standard 1,000-Watt Inverter Versus 300 Watts Last Year – Includes an inverted outlet near the main bed.
4. New Standard Coleman®-Mach® 3 Power Saver A/C With Heat Pump – Saves weight (10 lbs.) for greater carrying capacity and uses 23 percent less running wattage (1,450 watts versus 1,900 watts). Benefit – More generator capacity is left for the customer to use.



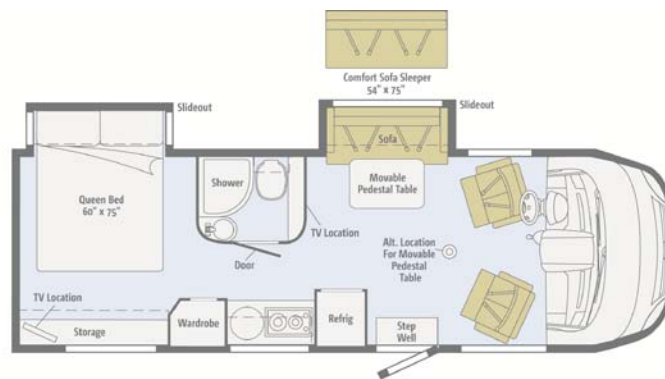
2012 WINNEBAGO

Via 25T

Standard Ultraleather Carpet Vinyl



Note: Dimensions shown are for sleeping space only and may vary due to styling differences. Dashed lines denote overhead storage areas.



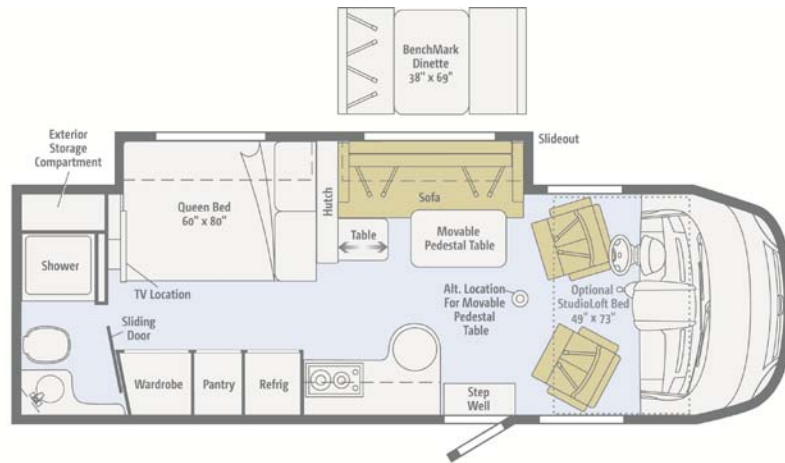
2012 WINNEBAGO

Via 25Q

Standard Ultraleather Vinyl



Note: Dimensions shown are for sleeping space only and may vary due to styling differences. Dashed lines denote overhead storage areas.



2012 WINNEBAGO

Via 25R

Standard
UltraLeather

Vinyl



Note: Dimensions shown are for sleeping space only and may vary due to styling differences. Dashed lines denote overhead storage areas.