

2012 MERIDIAN®



Four Floorplan Models

- **34Y** (NEW — Formerly a Meridian® V Class Floorplan)
- **36M** (NEW Triple Slide with RH Full-Wall Slide, Front LH Dinette/Sofa Slide, and Rear LH Wardrobe Slide)
- **40U** (Carryover Quad Slide, Front Sectional Lounge, Mid-Kitchen, and Split Private Bath)
- **42E** (NEW Tag Axle Triple Slide with RH Full-Wall Slide, LH Sofa/Kitchen Slide, and Rear LH Bed Slide)

Exterior Features

1. Chassis
 - a. 34Y — FCCC "XCS" straight-rail with Cummins® ISB 6.7L 340-hp diesel engine.
 - b. 36M — FCCC "XCL"/Maxum Chassis™ with Cummins ISB XT 6.7L 360-hp diesel engine.
 - c. 40U — FCCC "XCL"/Maxum Chassis with Cummins ISC 8.3L 380-hp diesel engine; increased GVWR to 34,320 lbs. (late RLC – MY 2011).
 - d. 42E — FCCC "XCL"/Maxum Chassis with tag axle and Cummins ISL 8.9L 400-hp diesel engine.
2. Standard Power Gear® automatic hydraulic leveling system.
3. Front lower valance (air dam) added to 36M, 40U, and 42E.
4. Standard CDI full-body paint in six available, all- new four color schemes.
5. Standard Front Exterior Protective Mask.
6. All slide toppers for all sliderooms have metal covers.
7. 34Y changes to common chrome mirror heads and turn signal lamp on mirror arm.
8. LPG Patio Accessory Connection Added.
9. Gravity freshwater tank fill port added — Maxum Chassis (36M, 40U, and 42E).
10. New optimized width slide-out compartment tray option for prime patio bay with Maxum Chassis (36M, 40U, and 42E).

Interior Features

1. Meridian has one 2011 carryover décor selection (Nightingale) and two new décor choices (Athena and Tranquil).
2. Two Wood Species/Three Finishes.
 - a. Two carryover from 2011 (Honey Cherry and Forest Cherry) with one new (Coffee Glazed Vienna Maple).
3. New Upholstery Styling for Sofas and BenchMark® Dinettes.
4. 34Y Enhancements (Consistent With Other Meridian Models).
 - a. Hardwood face-framed cabinetry in cab, galley, dining, and lounge areas forward of the bath.
 - b. Hardwood slideroom trim and crown molding.
 - c. Solid-surface countertop and seam-in lavatory bowl; decorative solid-surface backsplash.
 - d. Hardwood stile-and-rail bath entry door with hardwood flat-panel inserts.
 - e. Stile-and-rail raised panel refrigerator door overlays.
 - f. Driver and passenger seat have multiposition armrests and adjustable lumbar support.
 - g. Standard water purification system with separate galley faucet. Provides cold purified waterline to refrigerator icemaker.
 - h. Bedroom ceiling fan option.
 - i. Dual Rest Easy® sofa option.
5. New Flexsteel® Euro Recliner with Integrated Footrest (RLC June 1, 2011— Replaces Euro Recliner with Separate Ottoman).
6. All switches in the passenger trim panel are "lighted" (coach battery disconnect needs to be "on").
7. 40U Private Toilet Room Enhancements.
 - a. Improved interior floor space.
 - b. Restyled lavatory cabinet with toe kick.
 - c. Larger solid-surface, seam-in lavatory bowl (replaces SST drop-in).
 - d. Larger wall mirror.
8. New Lavatory Faucet (Taller Spout and Single-Hole Mounting).
9. New "Sectional" Dinette Option for the 36M.
10. Galley Peninsula Roll-Out Extension (36M, 40U, and 42E) Locks in Both Extended and Retracted Position.
11. New 16" x 16" Vinyl Tile Flooring for the 34Y.
12. 36M, 40U, and 42E Have Grouted Ceramic Tile Flooring.

13. Taller Bath Entry Doors Increase Walk-Through Head Clearance.
14. Aisle Doors Match Bath Entry Door Styling.
 - a. Hardwood stile-and-rail with three hardwood flat-panel inserts (34Y, 36M, and 40U) or decorative inserts (42E).
15. Reduced Main Floor to Top of Mattress Bed Height.
16. Queen and King Power Adjustable Bed for the 42E are Improved for Faster Operation.
17. Standard 6-Way Power Driver Seat Pedestal.
18. Standard Power Passenger Seat Pedestal (36M, 40U, and 42E); New Option for the 34Y.

19. Standard Automatic Generator Start System (36M, 40U, and 42E); Carryover Option for the 34Y.
20. Blu-Ray Home Theatre System Exchange Option.
21. New Over-the-Air Digital TV Antenna (Jack™ by King Controls™).
22. Bath Power Ventilator Fan Option for the 34Y.
23. Longer Vertical Assist Bar to Rear of Main Entry.



2012 ITASCA

Meridian 34Y

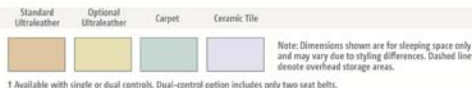


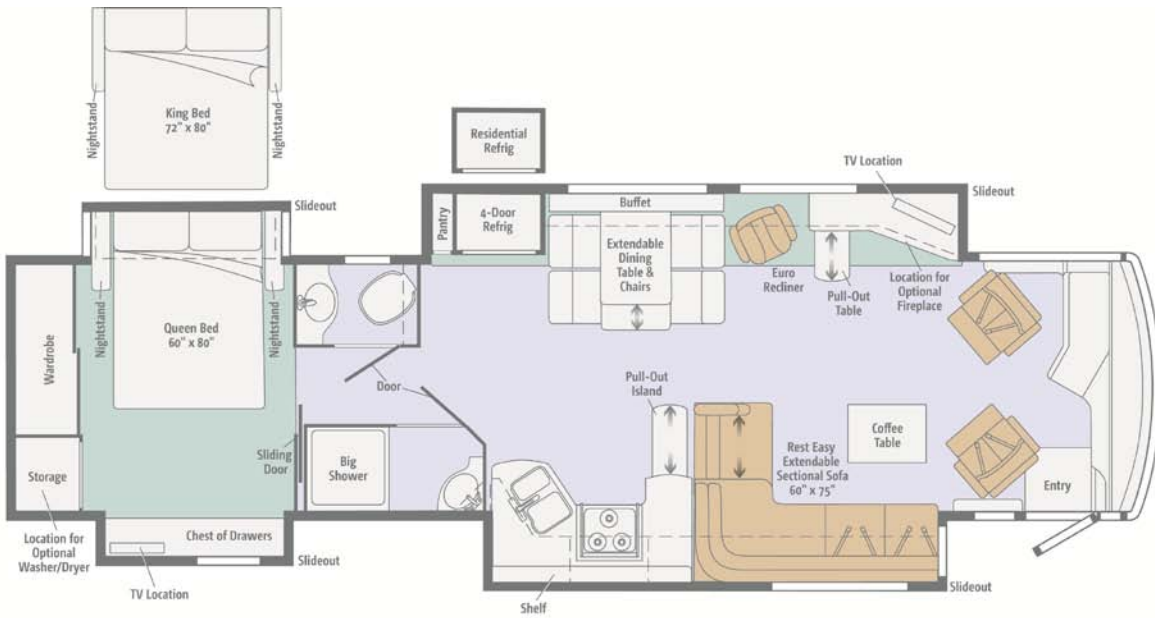
NEW!



2012 ITASCA

Meridian 36M





2012 ITASCA

Meridian 40U



Note: Dimensions shown are for sleeping space only and may vary due to styling differences. Dashed lines denote overhead storage areas.



2012 ITASCA

Meridian 42E



Note: Dimensions shown are for sleeping space only and may vary due to styling differences. Dashed lines denote overhead storage areas.