

# 2012 IMPULSE®



**Models: 24V, 26Q, 31C, 31J, and 31R**

## General

1. Schwintek slideout systems have replaced Power Gear®. The Schwintek systems are typically less expensive, lighter weight, and "free up" below-floor space for additional storage. The retention bar is not required with the Schwintek system.
2. The entrance door has been lowered eliminating the entrance step. The coach batteries have moved from the step area to a below-floor space with a slide-out tray and valance door.
3. The entrance step will be sprayed with a black textured material (Line-X). The rubber tread material has been deleted.
4. The 31J will not have a step up into the bathroom/bedroom area. The interior height will be 80".
5. The TV antenna has changed to the King Controls™ Jack™ antenna, which is a digital HDTV antenna.
6. The 31N model designation has changed to 31R. The 31R bedroom will be new. A wardrobe slideout will be located on the left side. The queen bed will be offset against the backwall with nightstands on both sides. The optional 19" TV will be located in the right front corner of the bedroom. A large exterior storage compartment will be located under the bed.

## Exterior Features

1. Carryover graphic designs with new colors.
2. Three carryover optional Deluxe Graphics Packages with new paint colors.
3. Option 13Y – Dual-glazed windows will be available for the 31J.

## Interior Features

1. Color Ways: New "Medallion" and "Tetramaze," Carryover "Mahogany Nite."
2. Offering new Vienna Maple with Coffee Glaze and Forest Cherry.
3. Swivel cab seats will be offered as an option on the 31C.
4. The range top and optional range with oven brand has changed to Atwood®.
5. Vinyl (Beauflor) flooring will be standard from the back of the cab through the bedroom. The slideroom floors will also be covered with vinyl.
6. A carpet option is available that adds carpet in the lounge/dinette area and the bedroom.
7. Carpeted cab floor mats have been added to the optional Interior Upgrade Package.
8. The slideroom trim molding is new.
9. New sofa styling.
10. New window treatments.
11. Added optional Jensen® double DIN RV radio with handheld remote and iPod/MP3 input jack.

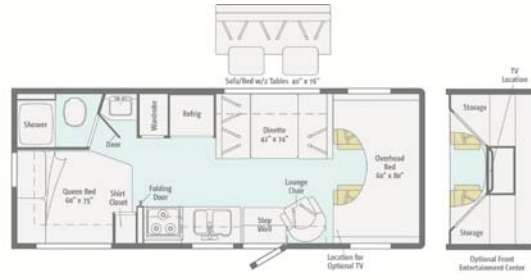
# 2012 IMPULSE® SILVER



**Models: 26QP, 31CP, 31JP, and 31RP**

## Exterior Features

1. The four optional Full-Body Paint Packages will have carryover designs with new colors.

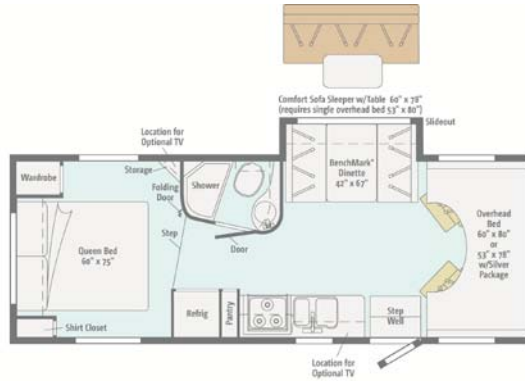


2012 ITASCA

## Impulse 24V



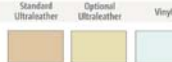
Note: Dimensions shown are for sleeping space only and may vary due to styling differences. Dashed lines denote overhead storage areas.



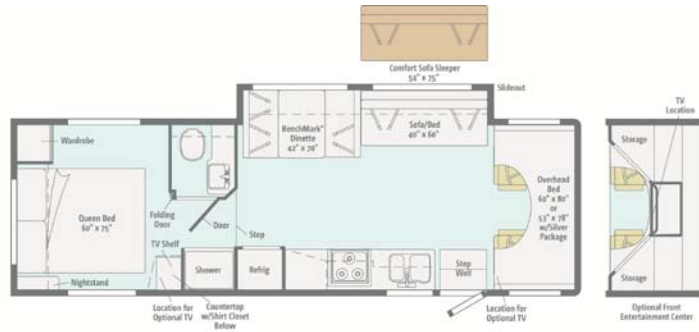
2012 ITASCA

## Impulse/Impulse Silver 26Q

\* BenchMark available on Impulse Silver only



Note: Dimensions shown are for sleeping space only and may vary due to styling differences. Dashed lines denote overhead storage areas.



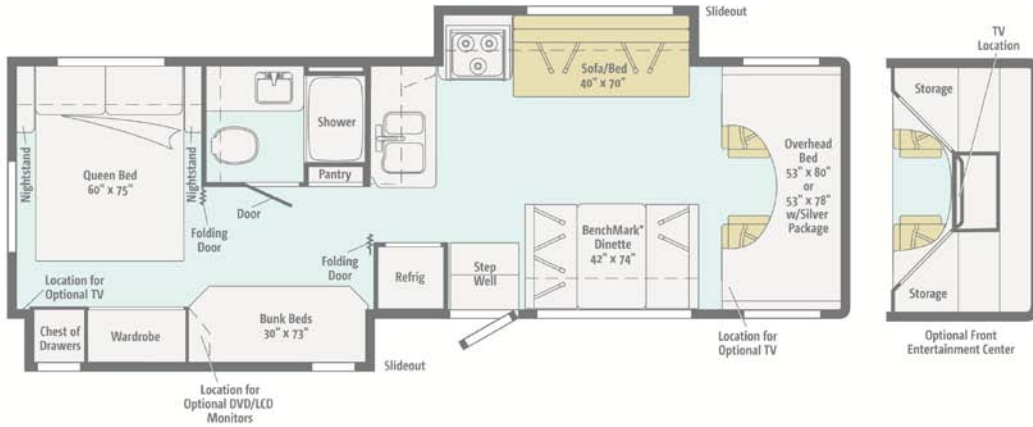
2012 ITASCA

## Impulse/Impulse Silver 31C

\* BenchMark available on Impulse Silver only



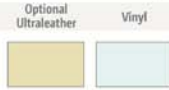
Note: Dimensions shown are for sleeping space only and may vary due to styling differences. Dashed lines denote overhead storage areas.



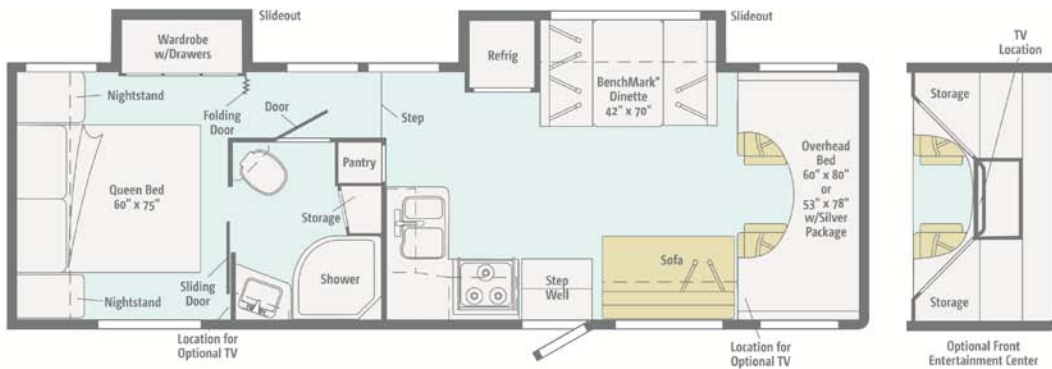
2012 ITASCA

# Impulse/Impulse Silver 31J

\* BenchMark available on Impulse Silver only



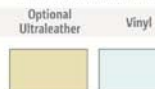
Note: Dimensions shown are for sleeping space only and may vary due to styling differences. Dashed lines denote overhead storage areas.



2012 ITASCA

# Impulse/Impulse Silver 31R

\* BenchMark available on Impulse Silver only



Note: Dimensions shown are for sleeping space only and may vary due to styling differences. Dashed lines denote overhead storage areas.