



# FINDING YOUR HOME ON WHEELS



## ASK THE RIGHT QUESTIONS.

To find the perfect motor home, begin by asking yourself some important questions: Do we plan on taking more weekend trips or extended stays? How far will we travel? How many people will call it home?

Your answers, plus the guidelines that follow, will help you choose the perfect motor home for you.



**FIRST, DECIDE WHICH CLASS OF MOTOR HOME SUITS YOUR LIFESTYLE.**

**Class C** motor homes are perfect for shorter trips and favorites of families. These smaller motor homes are built on a van chassis with attached cab section. Some feature a large bed over the cab.

Larger **Class A** motor homes feature open, spacious floorplans and are an excellent choice for extended trips. Class A motor homes have an integrated chassis (they look more “bus-like”).

- Gasoline-powered Class As are typically less expensive than diesels, and, since most are front-engined, they offer more flexibility in the rear floorplan.
- Diesel-powered Class As tend to be more powerful and more fuel efficient than gasoline models. Most have the engine in the rear, which makes these “diesel pushers” smoother and quieter.

**NEXT, LOOK AT FEATURES THAT WILL MAKE YOUR MOTOR HOME MORE COMFORTABLE.**

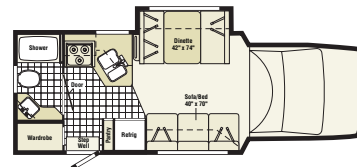
Consider how you typically use the living areas in your home, and look for a motor home that reflects your preferences.

Sleeping arrangements are one of the first priorities. Besides the rear sleeping area, dinettes and couches often convert to beds. Curtains and shades ensure privacy from the outside world; internal curtains or doors add privacy inside the coach.

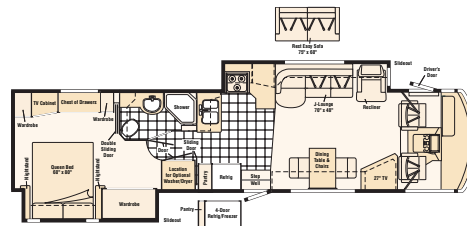
One especially nice feature is a slideout, a section that slides out to provide added space while the vehicle is parked. It’s important that slideouts be properly engineered for years of trouble-free service. Two areas where cutting corners can lead to trouble: how the slideout is constructed and how well it seals.

Our slideouts are engineered so the weight of the room is uniformly distributed across the chassis, not supported by the sidewall. Matching aluminum extrusions on the interior and exterior walls form a weather-tight seal, while a bulb seal squeegees away—and seals out—moisture and contaminants when the slideout is retracted.

Class C



Class A



**DON'T OVERLOOK ENGINEERING,  
CONSTRUCTION AND SAFETY FEATURES.**

Lots of people think every motor home is a "Winnebago." Granted, a lot of motor homes may appear to be similar, especially on the showroom floor. But only a motor home designed and manufactured by Winnebago Industries deserves to carry the respected "Winnebago" or "Itasca" brand name.

With just a little digging, you can easily learn to tell the difference, especially in the way they're built. (Some experienced buyers say they can "hear" the difference the first time they close the door.)





## GET THE INSIDE STORY ON QUALITY.

Engineering excellence and manufacturing quality are two big keys to the way our motor homes hold up so well over the long haul. And when you look at how we build them, you'll understand why our name is so respected—and why more people choose Winnebago Industries coaches than any other motor homes.

In fact, many of our owners previously drove another brand, but wanted the security of owning a coach as well-designed and well-engineered as a Winnebago Industries motor home.

For more on Winnebago Industries quality and engineering, see *The Inside Story* brochure, available from Winnebago Industries or your nearest dealer.

## CONSIDER STORAGE: CAPACITY AND ACCESS.

You'll find convenient cabinets, closets and drawers throughout the interior, each designed to secure its contents while you're on the road.

There is often substantial exterior storage as well. This "basement" storage is ideal for golf clubs, lawn chairs, fishing gear—just about anything you need to enjoy the great outdoors. And with our exclusive StoreMore® system, storage under the slideout extends with the slideout to make loading and unloading easy.

## THINKING ABOUT A TRAILER? Consider the advantages of a motor home.

Every year, thousands of RVers switch from towing a trailer to driving a motor home. Here are just a few of the reasons why.

**Convenience.** Because they're self-contained, motor homes offer easier access to amenities and are simpler to set up at camp. So it's easier to stay in out-of-the-way places, and you've got more freedom to change travel plans at the last minute.

**Handling.** Motor homes often provide a smoother, more comfortable ride than vehicles typically used to pull trailers. And windy weather may present fewer concerns compared to trailers, which are often light for their size.

**Towing capacity.** With a motor home, you don't have to subject an expensive tow vehicle to the wear and tear of towing. Better yet, you can tow something else: a car for day trips, personal watercraft, ATVs, a boat—almost anything you'd like to bring along!

**Independence.** Generators are standard or available in most motor homes, so you're less dependent on campground hookups. Motor homes also let you take advantage of the vehicle's engine to help heat or cool the coach, to supply power for interior lights and some appliances, even to help heat water for the galley or bath.



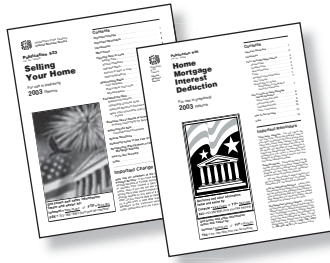
## LOOK DOWN THE ROAD.

Warranty coverage and service can also affect your motor home experience, so be sure to choose a manufacturer with a strong reputation for standing behind its products.

Our Winnebago and Itasca motor homes feature a 12-month/15,000-mile basic protection plan, a 36-month/36,000-mile warranty on the structure and a 10-year limited parts-and-labor warranty on the roof skin. And with more than 300 Winnebago Industries dealers in the U.S. and Canada, you're never far from help should you ever need it. (See "Finding the right dealer" at right.)

Even better, our TripSaver program guarantees all qualifying, in-stock warranty parts will be air shipped within 24 hours of the time your dealer places the order. That helps keep any downtime for repairs to an absolute minimum.





## FUNDING THE MOTOR HOME OF YOUR DREAMS.

There are many ways to finance a motor home, including through your local bank or a financial institution your RV dealer recommends. Due to the small number of delinquent RV loans, lenders are usually very willing to finance RVs.

The Recreation Vehicle Industry Association (RVIA) reports that typical RV loans range from 10 to 15 years, with down payments ranging from less than 10% to about 20%.

*Tax Implications.* In most cases, the interest on a motor home loan qualifies as a second-home tax deduction. Consult your tax advisor for information about deductions.

*Insurance.* Most motor home policies are a hybrid of a homeowner's and vehicle owner's insurance policy—they include liability, comprehensive and collision coverage, as well as coverage for the contents of your motor home and more. Check with your agent, ask your dealer for more information or look into plans available through our Winnebago-Itasca Travelers Club.

For additional information about deducting recreation vehicle loan interest, contact the IRS at 1-800-829-3676 or go to [www.irs.gov](http://www.irs.gov) to request these free IRS booklets: Publication 936—*Home Mortgage Interest Deduction* and Publication 523—*Selling Your Home*.

## FINDING THE RIGHT DEALER.

The first step in finding the right motor home is finding the right dealer. Fortunately, you'll be working with the finest dealers in the industry.


Each year, we provide extensive product training to ensure our dealers have the most up-to-date information possible. And our industry-leading technician training program means factory-trained technicians are ready to provide expert service at our coast-to-coast network of dealers.

Recreation Vehicle Dealers Association members annually rate RV manufacturers on the quality of their products and on their sales and service support. Winnebago Industries has achieved the RVDA's coveted Quality Circle award every year since its inception, the only RV manufacturer to do so.

We're proud that the people on the front lines of customer service rank us #1, but each owner's experience is also important. So we ask every new buyer to rate their purchase experience and their overall satisfaction with their motor home. Besides pinpointing opportunities for improvement, these surveys provide the basis for each dealer's rating in the Circle of Excellence program, the first dealer excellence program in the RV industry.

It's just one more way we're working to make sure that you get everything possible out of owning a Winnebago Industries motor home.





**SEE HOW MUCH FUN YOU CAN HAVE IN  
A WINNEBAGO INDUSTRIES MOTOR HOME.**

Visit your Winnebago or Itasca dealer today for a closer look. You'll find a motor home to suit your needs—and the beginning of a new life filled with fun and adventure.

For a dealer near you, or to request a specific model brochure, please call 1-800-643-4892, ext. 3, or visit us online at [www.winnebagoind.com](http://www.winnebagoind.com).

