

Winnebago Industries Interactive Parts Catalog

Requirements, Recommendations, Installation, and Usage Guidelines

Hardware and Software

Hardware: minimum

- PC with 2 GHz processor clock speed; Intel® Pentium® 4, Intel® Pentium® D or AMD family, or compatible processor.
- Random Access Memory (RAM): 512 MB.
- Graphics card: 3D Accelerator Direct3D compatible graphics Card with 128MB video RAM.
- Minimal screen resolution of monitor: 1024x768.

Hardware: recommended

- PC with Intel® Core™ Duo, Intel® Core™ 2 Duo, or AMD Athlon™ 64 X2 Dual-Core processor.
- Random Access Memory (RAM): 2 GB
- Graphics card: 3D Accelerator DirectX 9.0c compatible graphics card with at least 128MB video RAM.

Software

- Operating systems supported:
 - Microsoft Windows XP Service Pack 3 (SP3) (32-bit)
 - Microsoft Windows Vista Service Pack 2 (SP2) (32-bit, 64-bit)
 - Microsoft Windows 7 (32-bit, 64-bit)
- Web browser: Microsoft Internet Explorer 8.0 or a later version (32 bit version only)
NOTE: Firefox is NOT supported
- Microsoft DirectX® End-User Runtime 9.0c or a later version.
 - Help Installing DirectX
 - <http://support.microsoft.com/kb/179113>
- Cortona3D Viewer 7.0 or a later version.
- Rapid2DViewer 1.0 or a later version (for displaying the 2D graphics).
- Installation links:
 - 2D/3D Viewer Installation <http://www.winnebagoind.com/install/CortonaViewers.exe> (32-bit)
 - 2D/3D Viewer Installation http://www.winnebagoind.com/install/CortonaViewers_x64.exe (64-bit)

Note: You will need to have Administrator rights on your computer to install the 2D/3D viewer.

Internet Explorer Security Settings

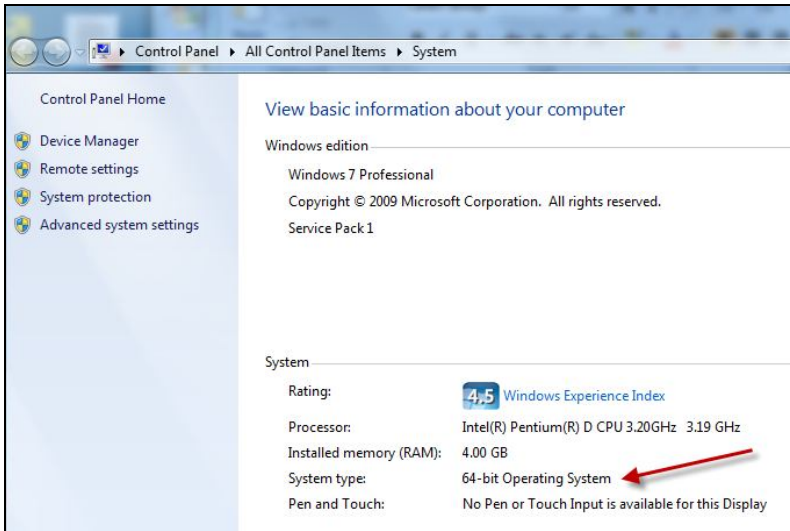
- Open the Security Tab in Internet Explorer Options dialog (Tools > Internet Options > Security).
- Select Internet zone.
- Press the Custom level button to open Security settings dialog.
- Set the following:
 - Run ActiveX controls and plug-ins – Enable.
 - Script ActiveX controls marked safe for scripting – Enable.
 - Active scripting – Enable.
 - Initialize and script ActiveX controls not marked as safe for scripting – Prompt or Enable.

Internet Explorer Advanced Settings

- Open the Advanced Security Tab in Internet Explorer Options (Tools > Internet Options > Advanced > Security).
- Allow active content to run in files on My Computer – Needs to be Selected.

Software Installation

- Determine what version you need to install
- For Windows 7 or Vista – Click Start Button - Click on Control Panel – Click on System
- System type: It will show 64-bit Operating System or 32-bit Operating System (Note: If it is not clearly evident what operating system you are running – you should install the 32-bit CortonaViewer.)



Usage Guidelines

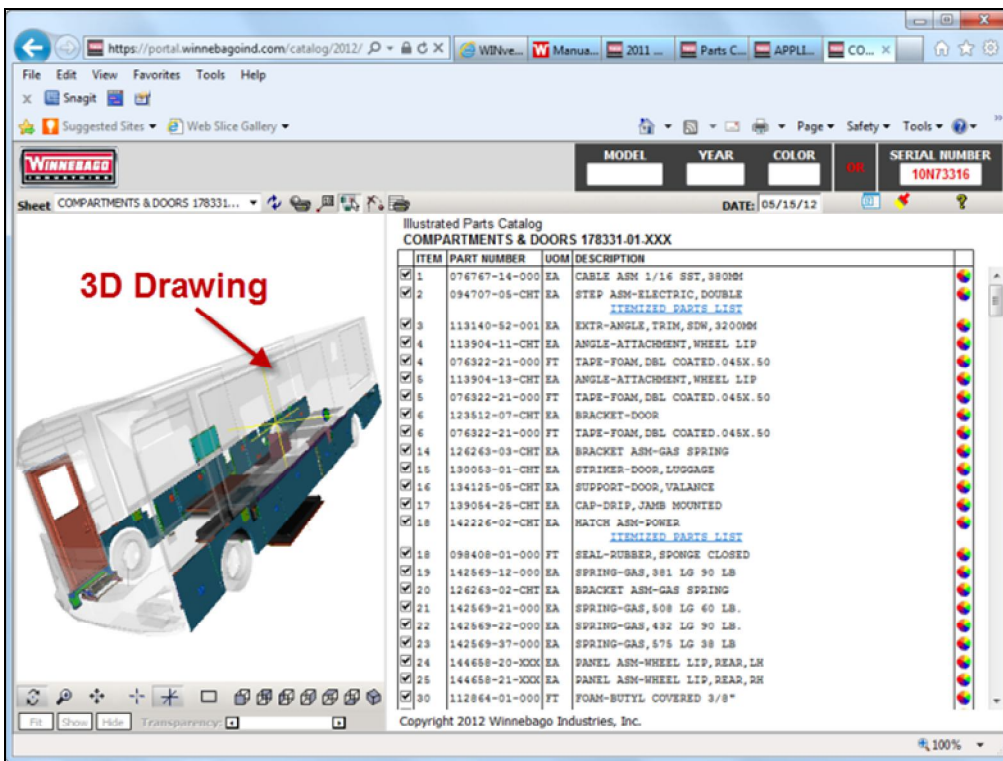
The Parts Catalog is located on the Winnebago Industries public website. (Resources – Manuals and Diagrams)

- <http://www.winnebagoind.com/resources/manuals/>
- Click on Parts Catalog
- The Interactive Parts Catalog begins with model year 2011.

Choose your Brand/Model: (Have your unit serial number available.)

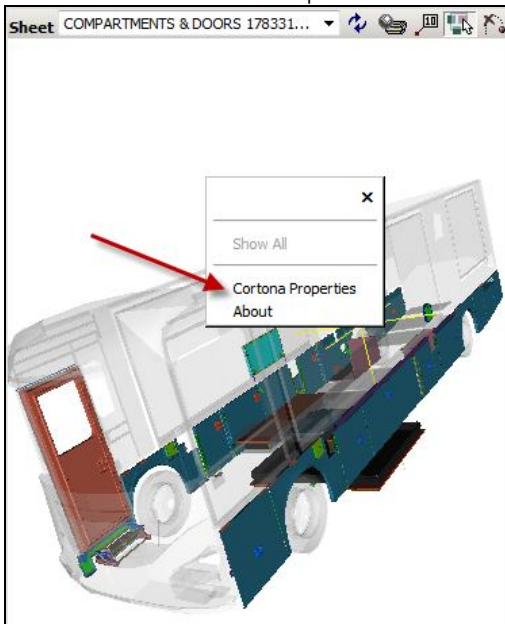
The screenshot shows the Winnebago Interactive Parts Catalog interface. At the top, there are input fields for "MODEL", "YEAR", "COLOR", and "SERIAL NUMBER". Below these is a "DATE:" field. The main content area is titled "2012 (N) P-SERIES WKP40U JOURNEY" and "Interactive Parts Catalog 2012 WKP40U 177106-01-000". On the left, there is a "2D Drawing" of the vehicle interior with a red arrow pointing to it. Below the drawing are lists of options for "TRAVERTINE", "PROVENCE", and "HAWTHORNE". On the right, there is a table with columns for "ITEM", "PART NUMBER", "UOM", and "DESCRIPTION". The table lists various components like CHASSIS, DOORS & COMPARTMENTS, DRIVERS, ELECTRIC, EXTERIOR, GENERATOR, HEATING & A/C, INTERIOR, LABELS, LP SYSTEM, PLUMBING, and WINDOWS & VENTS. At the bottom, there is a copyright notice: "Copyright 2010 Winnebago Industries, Inc."

ITEM	PART NUMBER	UOM	DESCRIPTION
1		DW	CHASSIS EXHAUST, FRAME, FUEL, HITCH, LEVELING, WHEEL
2		DW	DOORS & COMPARTMENTS DRIVERS, ENTRY, SECTIONS, STEP, STORAGE
3		DW	DRIVERS CURTAINS, DASH, FRONT, INTERIOR, SEATS
4		DW	ELECTRIC AUDIO, LIGHT, MONITOR, RECEPTACLES, SWITCHES
5		DW	EXTERIOR AWNING, BOWY, GRAPHICS, LADDERS, MIRRORS
6		DW	GENERATOR GENERATOR, INSTALLATION
7		DW	HEATING & A/C AUTO, FURNACE, REAR HEATER, ROOF A/C
8		DW	INTERIOR APPLIANCES, CABINETS, CURTAINS, FURNITURE
9		DW	LABELS LABEL LOCATION
11		DW	LP SYSTEM LP SYSTEM
12		DW	PLUMBING FAUCET, PUMP, SHOWER, SINKS, TANKS, TOILET
13		DW	WINDOWS & VENTS VENTS, WINDOWS, WINDSHIELD, WIPER
14	158603-12-012	EA	MANUAL-OPER SUPPL, P-SERIES
15	159842-01-CHT	EA	CASE-VINYL, OWNERS MANUAL
16	161500-12-020	EA	MANUAL-OPERATOR-JOURNEY

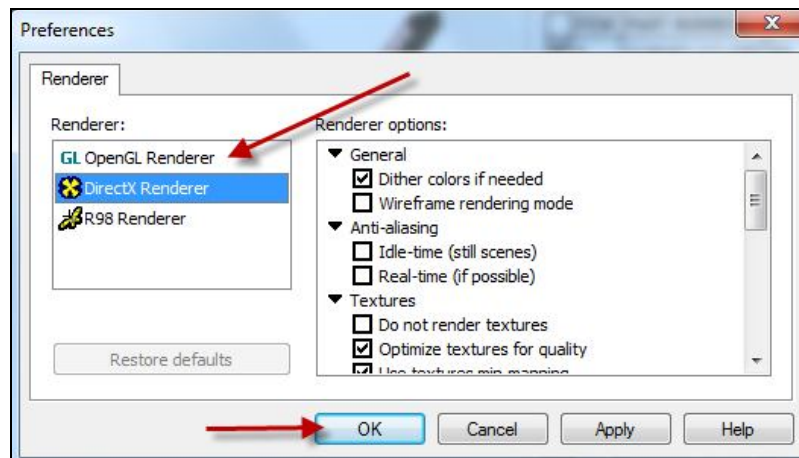


If the 3D Drawing does not display: (Shows only a blank white background.)

- Right click in the window where the 3D drawing should appear.
- Choose the Cortona Properties



Choose the OpenGL Renderer and Click Ok.



Note: If OpenGL Renderer works for your computer, you will need to repeat the above steps each time you change to a different 3D drawing.

