



DANGER

Danger of electrical shock, burns or death. Always remove all power sources before attempting any repair, service or diagnostic work. Power can be present from shore power, generator, inverter or battery. All power sources must be disabled and secured before performing any service.



CAUTION

If you lack the skills, tools or equipment to perform diagnostic or repair work leave such work to an authorized Winnebago Industries dealer or other qualified shop.

		J32H	J33S	J35P	J35Z	J37F	J38N	J38S
CABLE ASM-CHASSIS BATTERY (RED)		141417-35-056	141417-35-044	141417-35-056	141417-35-044	141417-35-068	141417-35-072	141417-35-072
CABLE ASM-COACH BATTERY (YEL)		141417-52-012	141417-52-008	141417-52-012	141417-52-008	141417-52-012	141417-52-008	141417-52-008
CABLE ASM-COACH BATTERY GND (BLK)		133568-11-006	133568-11-006	133568-11-006	133568-11-006	133568-11-006	133568-11-006	133568-11-006
CABLE ASM-GENERATOR (GRN)	(321) (67A) (51M)	141415-42-070	141416-42-087	141415-42-080	141416-42-091	141416-42-072	141416-42-072	141416-42-072
WIRE ASM-INVERTER	(40D)	154845-01-012	N/A	154845-01-012	154845-01-020	154845-01-012	154845-01-018	N/A
LEVELING SYSTEM POWER CABLE (BLU)	(60M)	141415-22-049	141415-22-037	141415-22-049	141415-22-037	141415-22-049	141416-25-035	141416-25-035
LEVELING SYSTEM GND CABLE (BLK)	(60M)	133566-11-008	133566-11-008	133566-11-008	133566-11-008	133566-11-008	N/A	N/A
GENERATOR GROUND CABLE (BLK)	(321) (67A)	N/A	133566-12-006	133566-12-006	133566-12-006	133566-12-006	133566-12-006	133566-12-006
FRONT CHASSIS POWER (RED)		141415-32-010	141415-32-010	141415-32-010	141415-32-010	141415-32-010	141415-32-010	141415-32-010
CHASSIS BATTERY DISCONNECT RETURN (PUR)		141417-15-056	141417-15-044	141417-15-056	141417-15-044	141417-15-068	N/A	N/A

- (ILX) FRTL (FRED) 22K-340HP 22.5TIRE
- (ILZ) FRTL (FRED) 26K-340HP 22.5TIRE
- (51M) GEN-5.5KW ONAN-LP-MARO GOLD
- (ILI) FRTL (FRED) 22K-300HP 22.5TIRE
- (40D) INVERTER-DC/AC,600 WATT
- (60M) HYDRAULIC LEVEL JACKS-AUTO
- (321) GENERATOR PREP KIT
- (ILL) FRTL (FRED) 27,000#-22.5 TIRE
- (67A) GEN-6.0KW ONAN QUIET DIESEL
- (265) CODES/STANDARDS-CSA/CMVSS
- (IB1) CODES/STANDARDS USA

(IB1) (265) (ILL) (ILI) (ILZ) (ILX)

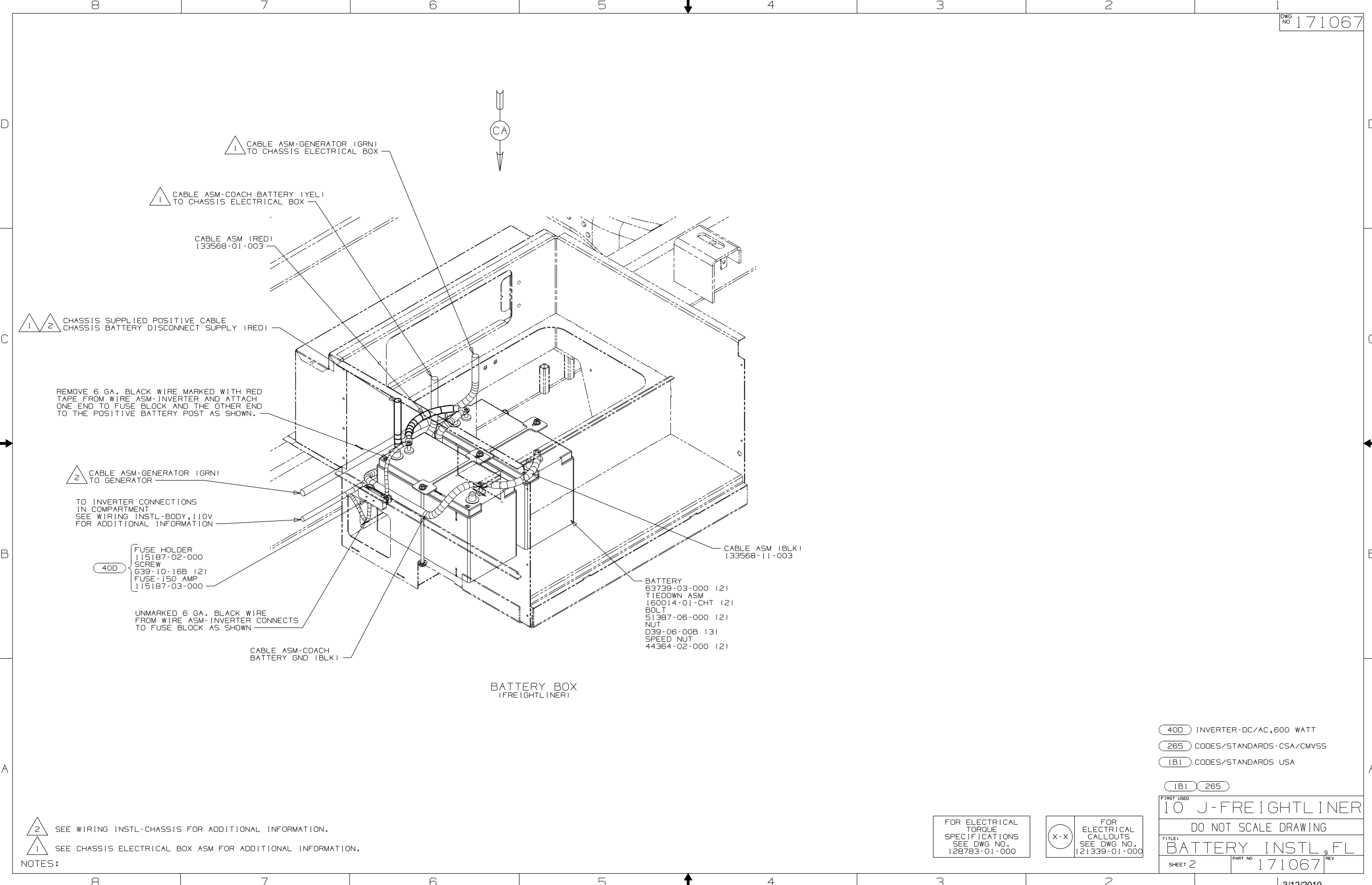
WINNEBAGO COPYRIGHT 2010 WINNEBAGO INDUSTRIES, INC.

DFTR	ORIG. DATE
CHKR	ALL DIMENSIONS ARE IN MILLIMETERS
P.E.	
M.E.	FIRST USED
DSNR	10 J-FREIGHTLINER
UNSPECIFIED TOLERANCES ARE:	
WHOLE DIM (X)	: 3
ONE-PLACE (X.X)	: 1.5
TWO-PLACE (X.XX)	: 0.50
ANGLE	: 1°
THIRD ANGLE PROJECTION	

FOR ELECTRICAL TORQUE SPECIFICATIONS SEE DWG NO. 128783-01-000

(X-X) FOR ELECTRICAL CALLOUTS SEE DWG NO. 121339-01-000

DO NOT SCALE DRAWING
 TITLE: BATTERY INSTL, FL
 SHEET 1 of 3 PART NO 171067 REV



BATTERY BOX (FREIGHTLINER)

- 40D INVERTER-DC/AC, 600 WATT
- 265 CODES/STANDARDS-CSA/CMVSS
- 1B1 CODES/STANDARDS USA

1B1 265

FIRST USED

10 J-FREIGHTLINER

DO NOT SCALE DRAWING

TITLE: BATTERY INSTL, FL

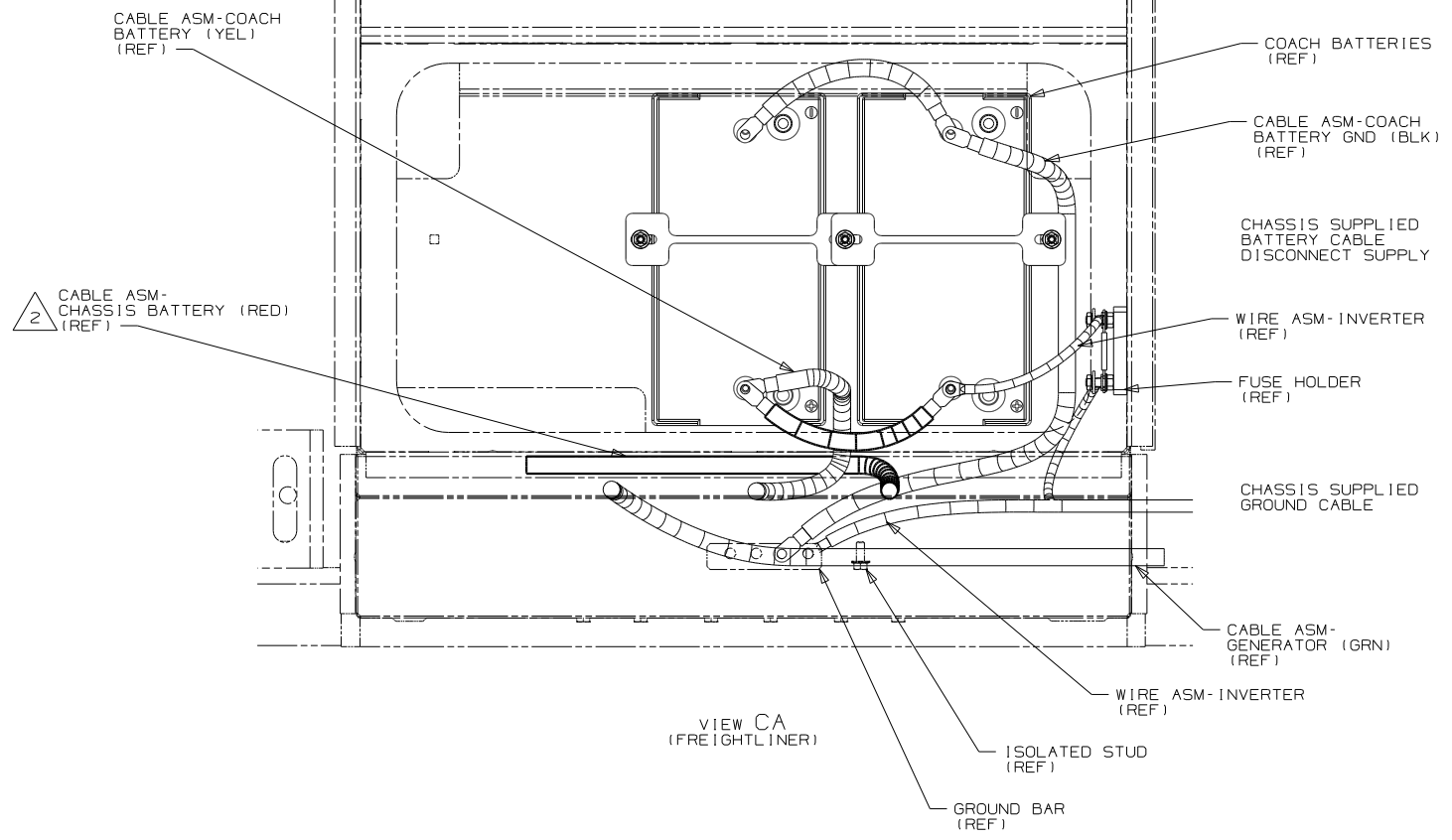
SHEET 2 PART NO 171067 REV

FOR ELECTRICAL TORQUE SPECIFICATIONS SEE DWG NO. 128783-01-000

X-X FOR ELECTRICAL CALLOUTS SEE DWG NO. 121339-01-000

- 2 SEE WIRING INSTL-CHASSIS FOR ADDITIONAL INFORMATION.
- 1 SEE CHASSIS ELECTRICAL BOX ASM FOR ADDITIONAL INFORMATION.

NOTES:



265 CODES/STANDARDS - CSA/CMVSS

1B1 CODES/STANDARDS USA

1B1 265

FOR ELECTRICAL TORQUE SPECIFICATIONS SEE DWG NO. 128783-01-000

X-X FOR ELECTRICAL CALLOUTS SEE DWG NO. 121339-01-000

FIRST USED	
10 J-FREIGHTLINER	
DO NOT SCALE DRAWING	
TITLE: BATTERY INSTL FL	
SHEET 3	PART NO 171067 REV