



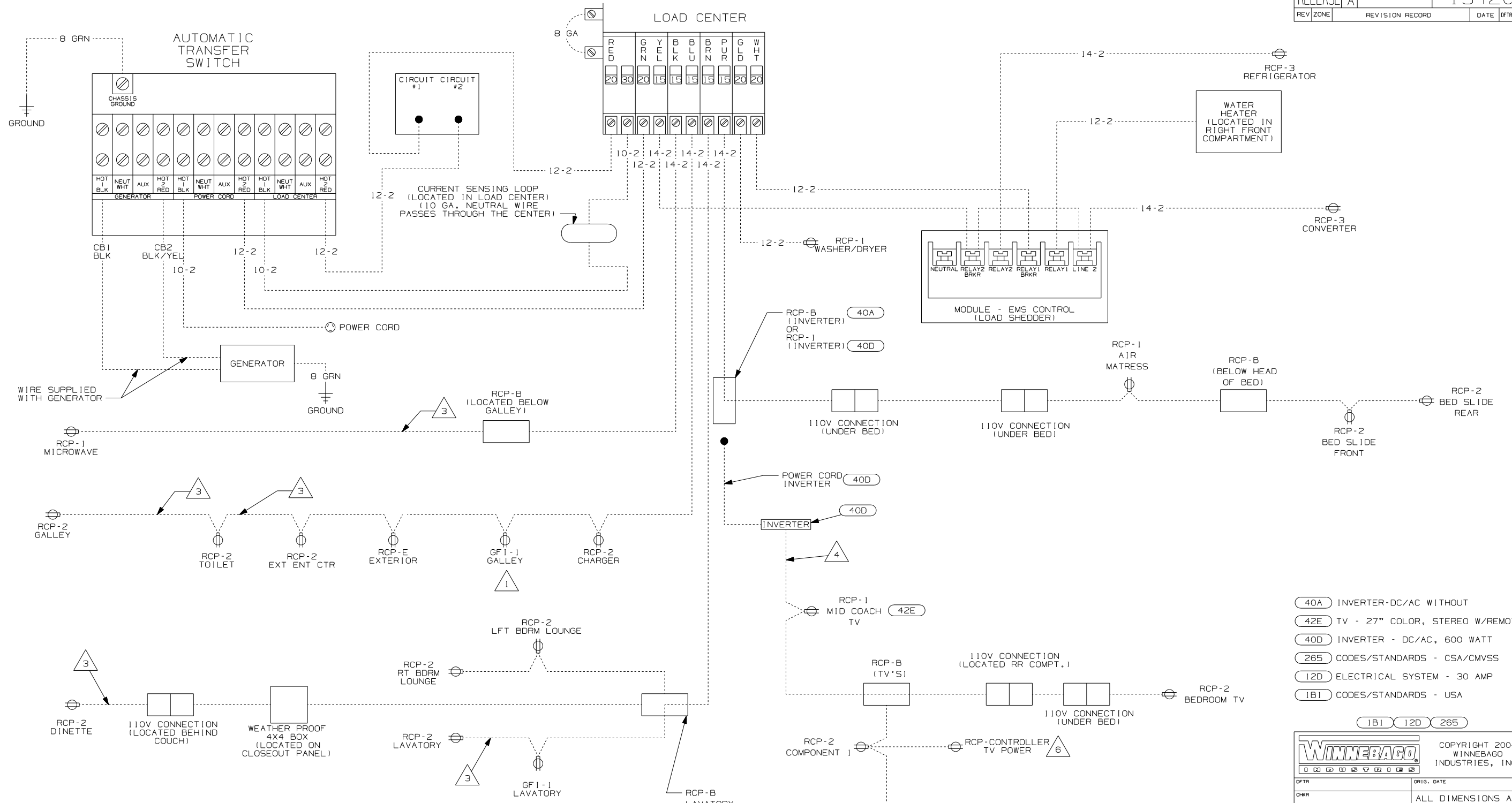
DANGER

Danger of electrical shock, burns or death. Always remove all power sources before attempting any repair, service or diagnostic work. Power can be present from shore power, generator, inverter or battery. All power sources must be disabled and secured before performing any service.



CAUTION

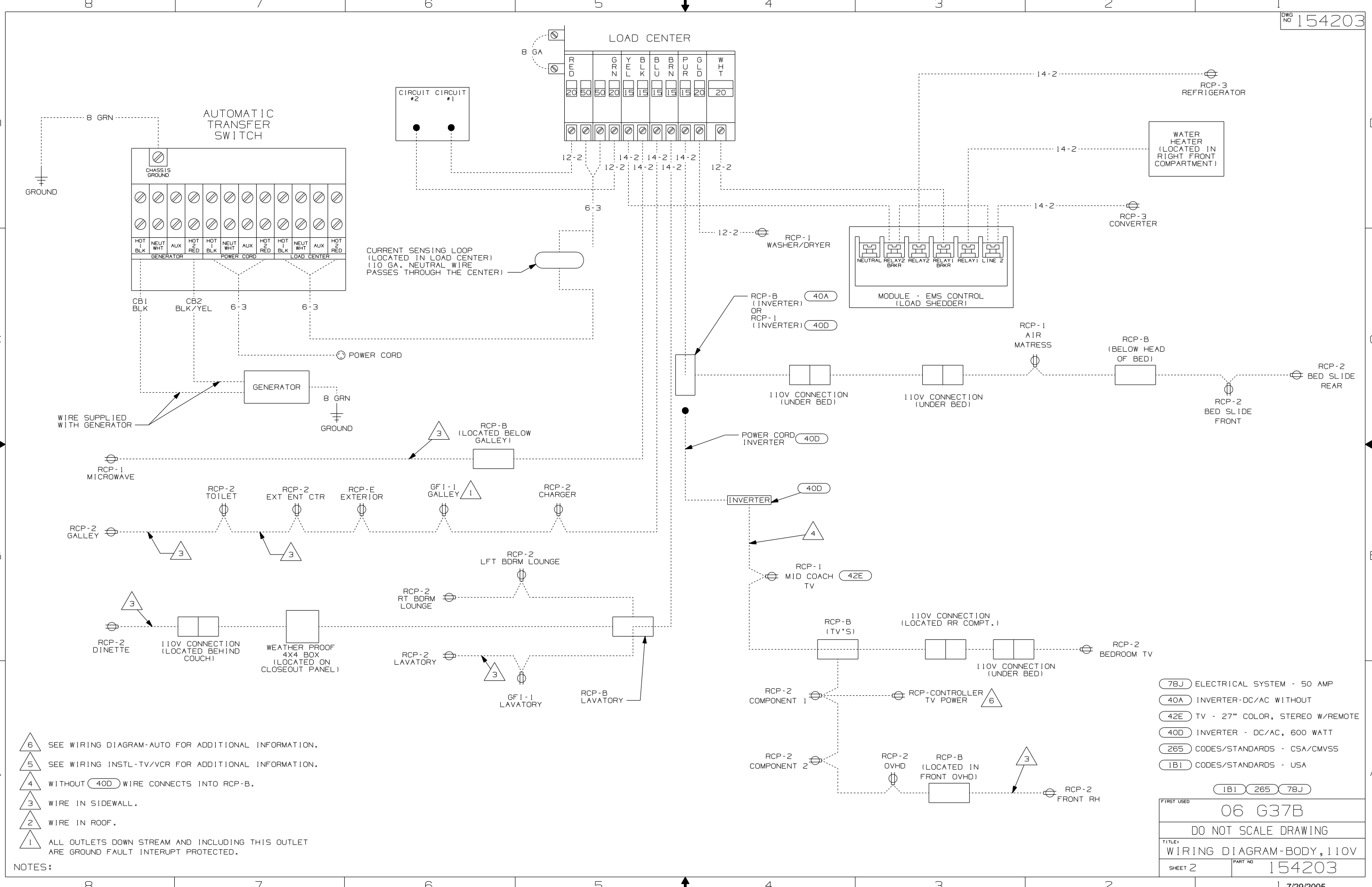
If you lack the skills, tools or equipment to perform diagnostic or repair work leave such work to an authorized Winnebago Industries dealer or other qualified shop.



- (40A) INVERTER-DC/AC WITHOUT
- (42E) TV - 27" COLOR, STEREO W/REMOTE
- (40D) INVERTER - DC/AC, 600 WATT
- (265) CODES/STANDARDS - CSA/CMVSS
- (12D) ELECTRICAL SYSTEM - 30 AMP
- (1B1) CODES/STANDARDS - USA

WINNEBAGO		COPYRIGHT 2004 WINNEBAGO INDUSTRIES, INC.	
DFTR	ORIG. DATE		
CHKR	ALL DIMENSIONS ARE IN MILLIMETERS		
P.E.	FIRST USED	06 G37B	
M.E.	UNSPECIFIED TOLERANCES ARE:	MATERIAL:	
DSNR	WHOLE DIM (X) :	.	
	ONE-PLACE (X.X) :	.	
	TWO-PLACE (X.XX) :	.	
	ANGLE :	.	
	THIRD ANGLE PROJECTION	.	
DO NOT SCALE DRAWING			
TITLE: WIRING DIAGRAM-BODY, 110V			
SHEET 1 OF 2	PART NO	154203	
REF:	1 7/29/2005		

- NOTES:
- 6 SEE WIRING DIAGRAM-AUTO FOR ADDITIONAL INFORMATION.
 - 5 SEE WIRING INSTL-TV/VCR FOR ADDITIONAL INFORMATION.
 - 4 WITHOUT (40D) WIRE CONNECTS INTO RCP-B.
 - 3 WIRE IN SIDEWALL.
 - 2 WIRE IN ROOF.
 - 1 ALL OUTLETS DOWN STREAM AND INCLUDING THIS OUTLET ARE GROUND FAULT INTERRUPT PROTECTED.



- NOTES:
- △ 6 SEE WIRING DIAGRAM-AUTO FOR ADDITIONAL INFORMATION.
 - △ 5 SEE WIRING INSTL-TV/VCR FOR ADDITIONAL INFORMATION.
 - △ 4 WITHOUT (40D) WIRE CONNECTS INTO RCP-B.
 - △ 3 WIRE IN SIDEWALL.
 - △ 2 WIRE IN ROOF.
 - △ 1 ALL OUTLETS DOWN STREAM AND INCLUDING THIS OUTLET ARE GROUND FAULT INTERRUPT PROTECTED.

- (78J) ELECTRICAL SYSTEM - 50 AMP
- (40A) INVERTER-DC/AC WITHOUT
- (42E) TV - 27" COLOR, STEREO W/REMOTE
- (40D) INVERTER - DC/AC, 600 WATT
- (265) CODES/STANDARDS - CSA/CMVSS
- (1B1) CODES/STANDARDS - USA

FIRST USED	06 G37B
TITLE	DO NOT SCALE DRAWING
TITLE	WIRING DIAGRAM-BODY, 110V
SHEET 2	PART NO 154203