



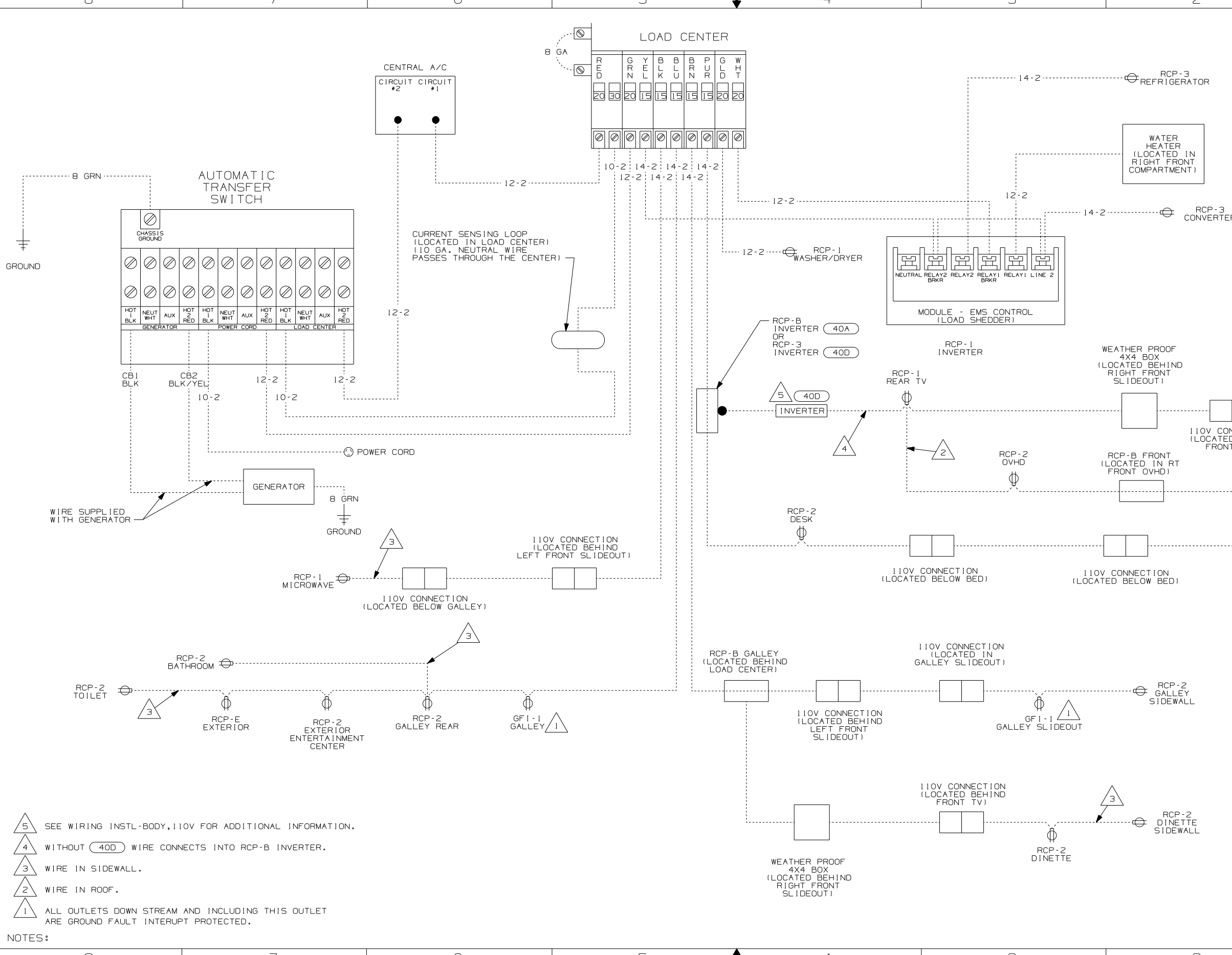
**DANGER**

**Danger of electrical shock, burns or death.** Always remove all power sources before attempting any repair, service or diagnostic work. Power can be present from shore power, generator, inverter or battery. All power sources must be disabled and secured before performing any service.



**CAUTION**

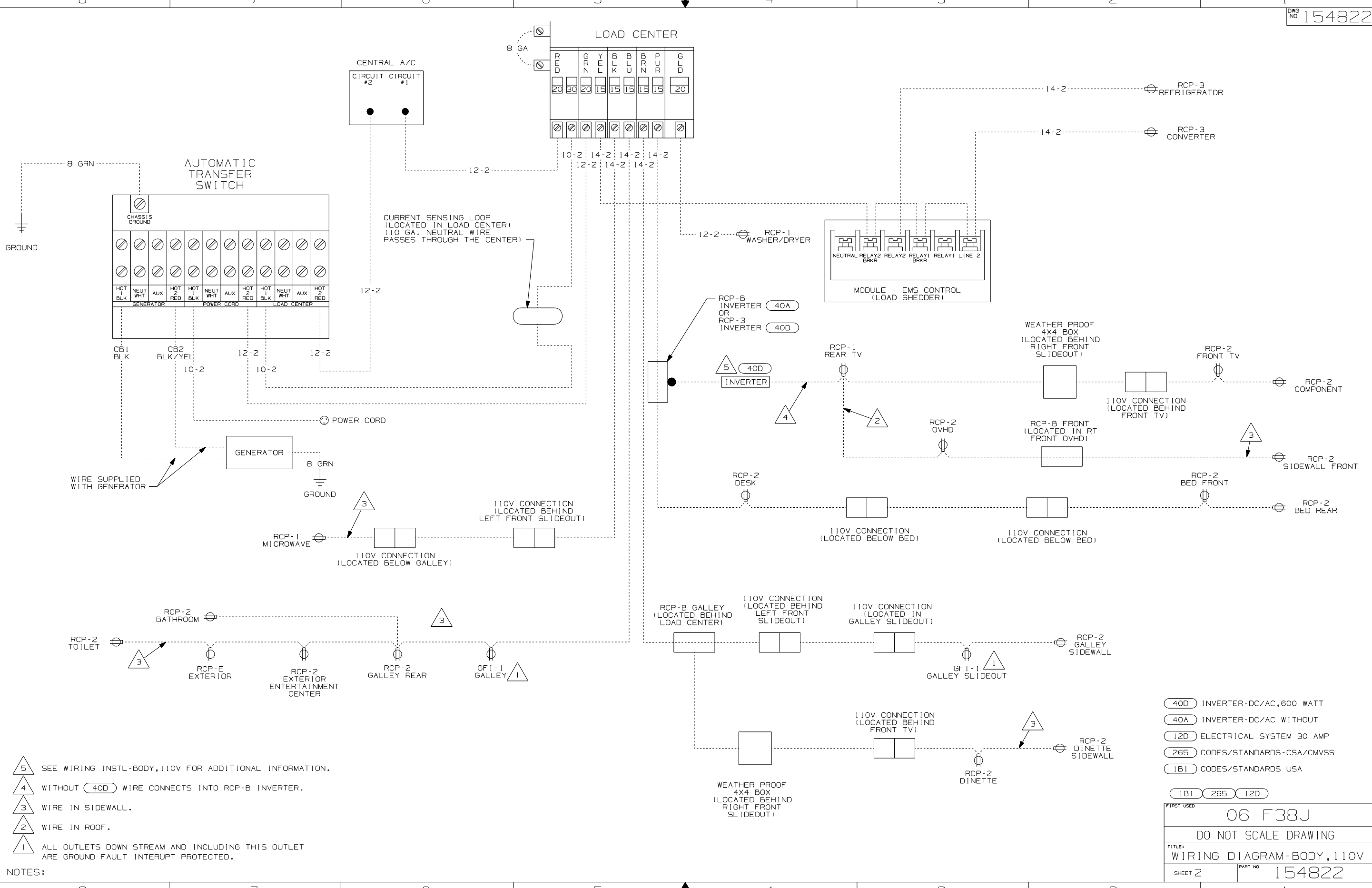
If you lack the skills, tools or equipment to perform diagnostic or repair work leave such work to an authorized Winnebago Industries dealer or other qualified shop.



- NOTES:
- 5 SEE WIRING INSTL-BODY, 110V FOR ADDITIONAL INFORMATION.
  - 4 WITHOUT 40D WIRE CONNECTS INTO RCP-B INVERTER.
  - 3 WIRE IN SIDEWALL.
  - 2 WIRE IN ROOF.
  - 1 ALL OUTLETS DOWN STREAM AND INCLUDING THIS OUTLET ARE GROUND FAULT INTERRUPT PROTECTED.

- 40D INVERTER-DC/AC, 600 WATT
- 40A INVERTER-DC/AC WITHOUT
- 53D WTR HTR-6GAL/ELE/LP/MOTORAID
- 1B2 WTR HTR-10GAL/ELEC/LP/MTRAIID
- 12D ELECTRICAL SYSTEM 30 AMP
- 265 CODES/STANDARDS-CSA/CMVSS
- 1B1 CODES/STANDARDS USA

<b>WINNEBAGO</b>		COPYRIGHT 2004 WINNEBAGO INDUSTRIES, INC.
DFTR	ORIG. DATE	
CHKR	ALL DIMENSIONS ARE IN MILLIMETERS	
P.E.	FIRST USED	06 F38J
M.E.		
DSNR		
UNSPECIFIED TOLERANCES ARE:		MATERIAL:
WHOLE DIM (X)	:	
ONE-PLACE (X.X)	:	
TWO-PLACE (X.XX)	:	
ANGLE	:	
THIRD ANGLE PROJECTION		
DO NOT SCALE DRAWING		
TITLE: WIRING DIAGRAM-BODY, 110V		
SHEET 1 OF 4	PART NO	154822
REF:	1 5/23/2005	

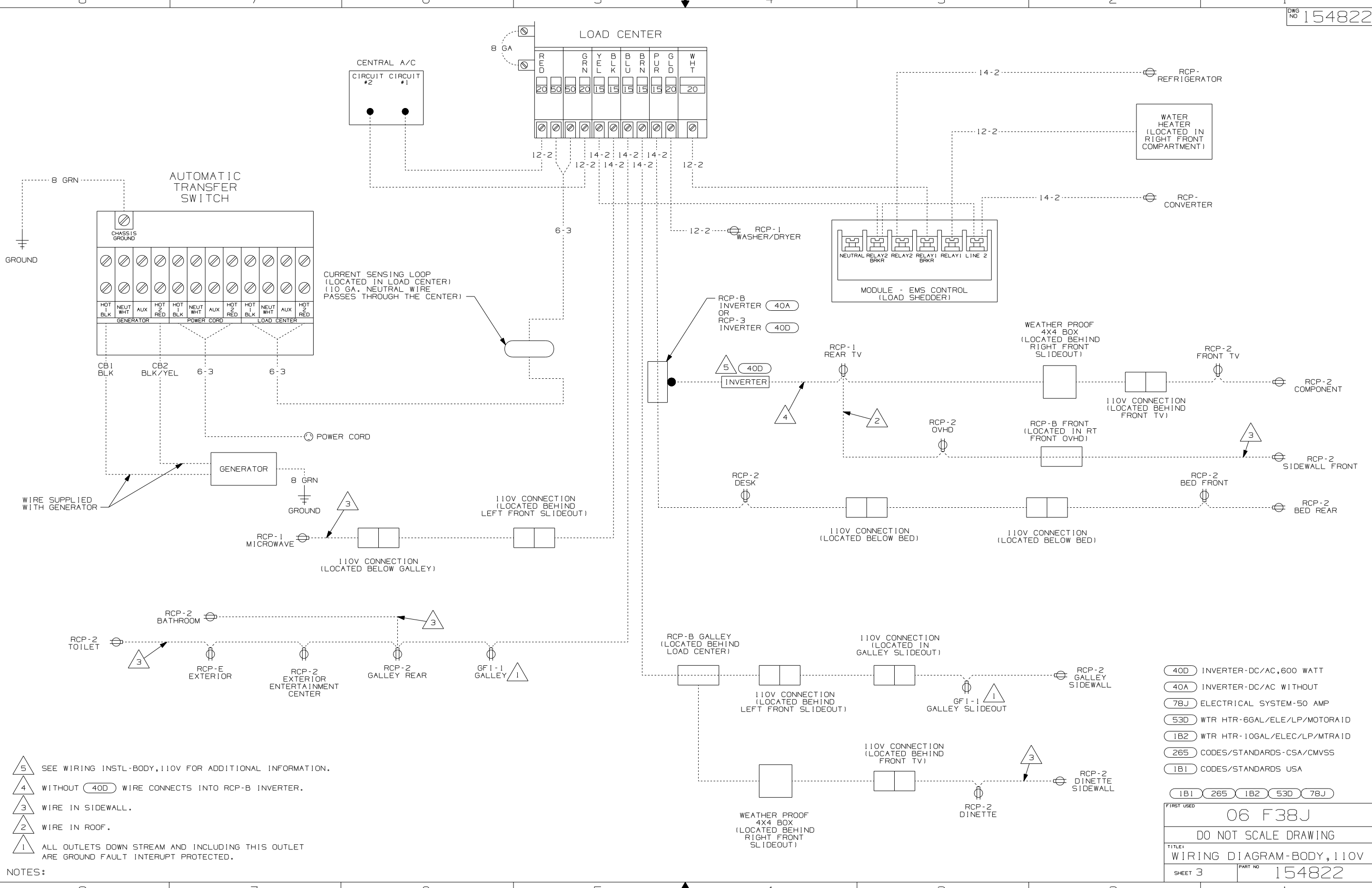


- 5 SEE WIRING INSTL-BODY, 110V FOR ADDITIONAL INFORMATION.
- 4 WITHOUT 40D WIRE CONNECTS INTO RCP-B INVERTER.
- 3 WIRE IN SIDEWALL.
- 2 WIRE IN ROOF.
- 1 ALL OUTLETS DOWN STREAM AND INCLUDING THIS OUTLET ARE GROUND FAULT INTERRUPT PROTECTED.

NOTES:

- 40D INVERTER-DC/AC, 600 WATT
- 40A INVERTER-DC/AC WITHOUT
- 12D ELECTRICAL SYSTEM 30 AMP
- 265 CODES/STANDARDS-CSA/CMVSS
- 1B1 CODES/STANDARDS USA

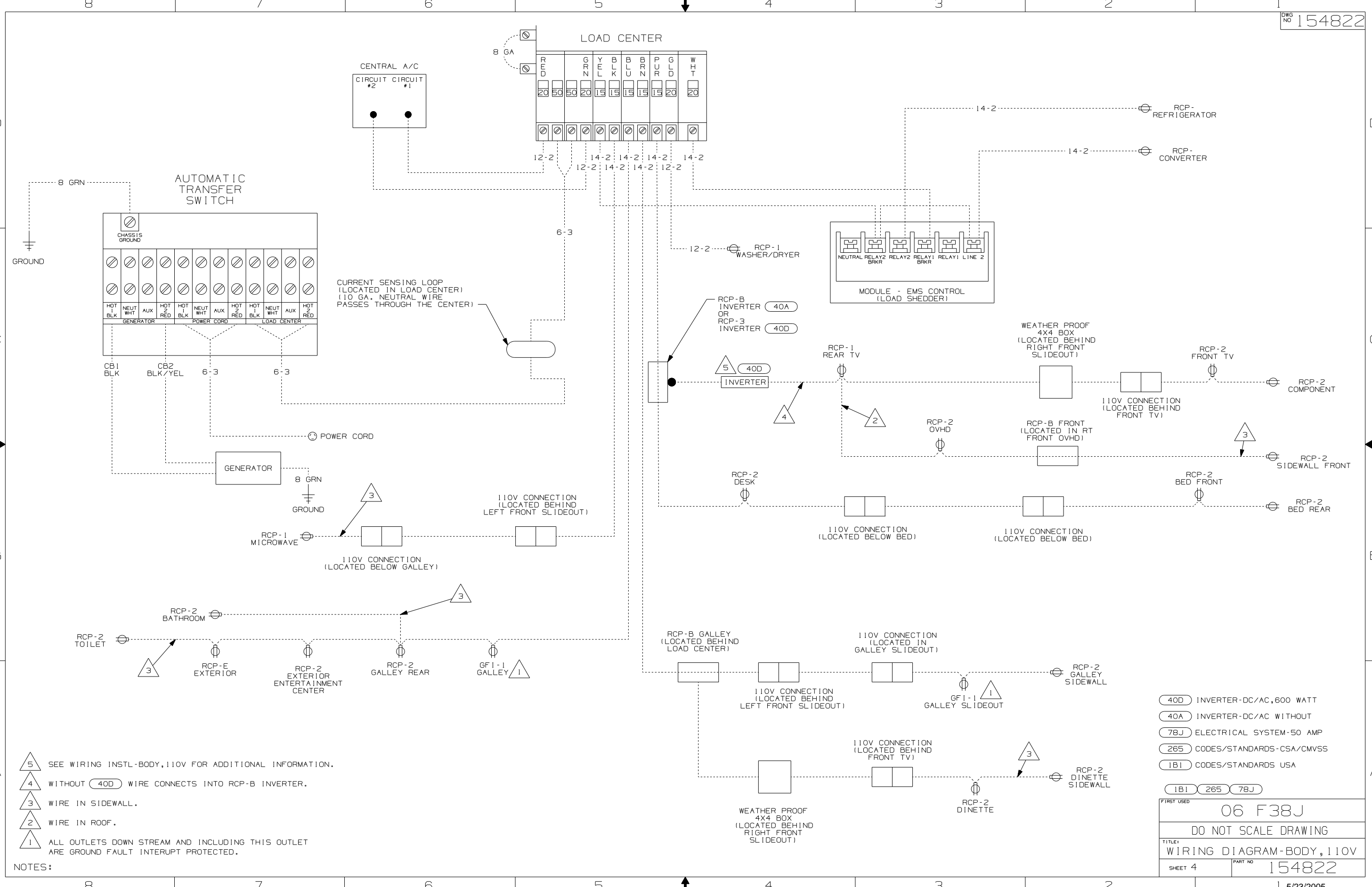
FIRST USED	
06 F38J	
DO NOT SCALE DRAWING	
TITLE:	
WIRING DIAGRAM-BODY, 110V	
SHEET 2	PART NO 154822



- NOTES:
- 5 SEE WIRING INSTL-BODY, 110V FOR ADDITIONAL INFORMATION.
  - 4 WITHOUT 40D WIRE CONNECTS INTO RCP-B INVERTER.
  - 3 WIRE IN SIDEWALL.
  - 2 WIRE IN ROOF.
  - 1 ALL OUTLETS DOWN STREAM AND INCLUDING THIS OUTLET ARE GROUND FAULT INTERRUPT PROTECTED.

- 40D INVERTER-DC/AC, 600 WATT
- 40A INVERTER-DC/AC WITHOUT
- 78J ELECTRICAL SYSTEM-50 AMP
- 53D WTR HTR-6GAL/ELE/LP/MOTORA1D
- 1B2 WTR HTR-10GAL/ELEC/LP/MTRA1D
- 265 CODES/STANDARDS-CSA/CMVSS
- 1B1 CODES/STANDARDS USA

FIRST USED	06 F38J
TITLE	DO NOT SCALE DRAWING
WIRING DIAGRAM-BODY, 110V	
SHEET 3	PART NO 154822



- NOTES:
- 5 SEE WIRING INSTL-BODY, 110V FOR ADDITIONAL INFORMATION.
  - 4 WITHOUT 40D WIRE CONNECTS INTO RCP-B INVERTER.
  - 3 WIRE IN SIDEWALL.
  - 2 WIRE IN ROOF.
  - 1 ALL OUTLETS DOWN STREAM AND INCLUDING THIS OUTLET ARE GROUND FAULT INTERRUPT PROTECTED.

40D	INVERTER-DC/AC, 600 WATT	
40A	INVERTER-DC/AC WITHOUT	
78J	ELECTRICAL SYSTEM-50 AMP	
265	CODES/STANDARDS-CSA/CMVSS	
1B1	CODES/STANDARDS USA	
1B1	265	78J
FIRST USED		
06 F38J		
DO NOT SCALE DRAWING		
TITLE:		
WIRING DIAGRAM-BODY, 110V		
SHEET 4	PART NO	154822