



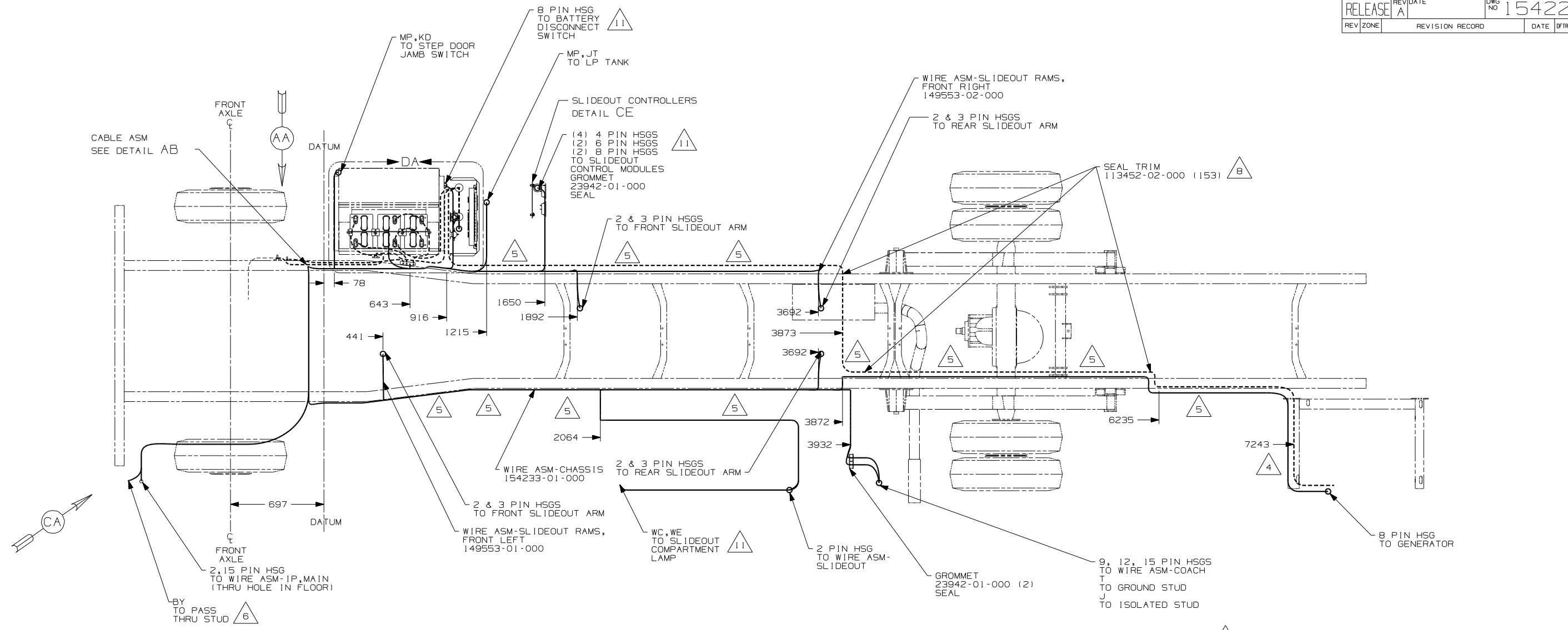
DANGER

Danger of electrical shock, burns or death. Always remove all power sources before attempting any repair, service or diagnostic work. Power can be present from shore power, generator, inverter or battery. All power sources must be disabled and secured before performing any service.

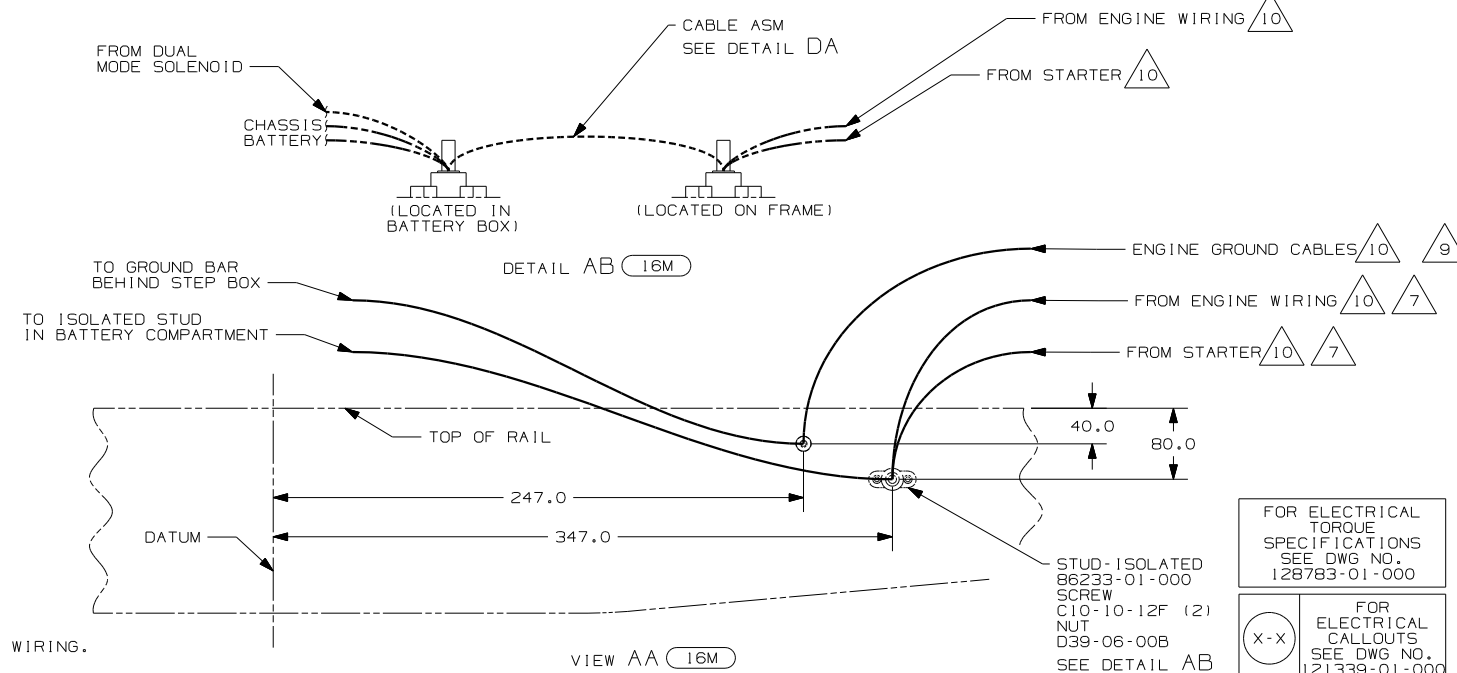


CAUTION

If you lack the skills, tools or equipment to perform diagnostic or repair work leave such work to an authorized Winnebago Industries dealer or other qualified shop.



- 11 SEE WIRING INSTL-BODY,12 FOR ADDITIONAL INFORMATION
 - 10 SUPPLIED WITH CHASSIS.
 - 9 CUT GROUND CABLES, ADD TERMINAL 8348-01-000 AND CONNECT TO GROUND STUD AS SHOWN IN DETAIL.
 - 8 COVER SHARP EDGES WHERE WIRE CROSSES FRAME RAILS.
 - 7 CUT STARTER CABLE AND ENGINE WIRING, ADD TERMINAL 68070-01-000 AND CONNECT TO ISOLATED STUD AS SHOWN IN DETAIL
 - 6 SEE WIRING INSTL-FRONT END FOR ADDITIONAL INFORMATION.
 - 5 CLAMP 83610-01-000, SCREW G11-10-16B.
 - 4 WIRE TIE 8343-04-00. FASTEN EVERY 600mm MINIMUM.
3. ALL DIMENSIONS ARE FROM DATUM UNLESS OTHERWISE SPECIFIED.
2. SECURE CONDUIT 41953, TAB AS REQUIRED, OVER ALL WIRES IN CONTACT WITH SHARP EDGES.
1. LEGEND: — WINNEBAGO: - - - - - CABLE: - - - - - CHASSIS SUPPLIED WIRING.



- 16M FORD CHASSIS - 20,500# GVWR
- 265 CODES/STANDARDS - CSA/CMVSS
- 1B1 CODES/STANDARDS - USA

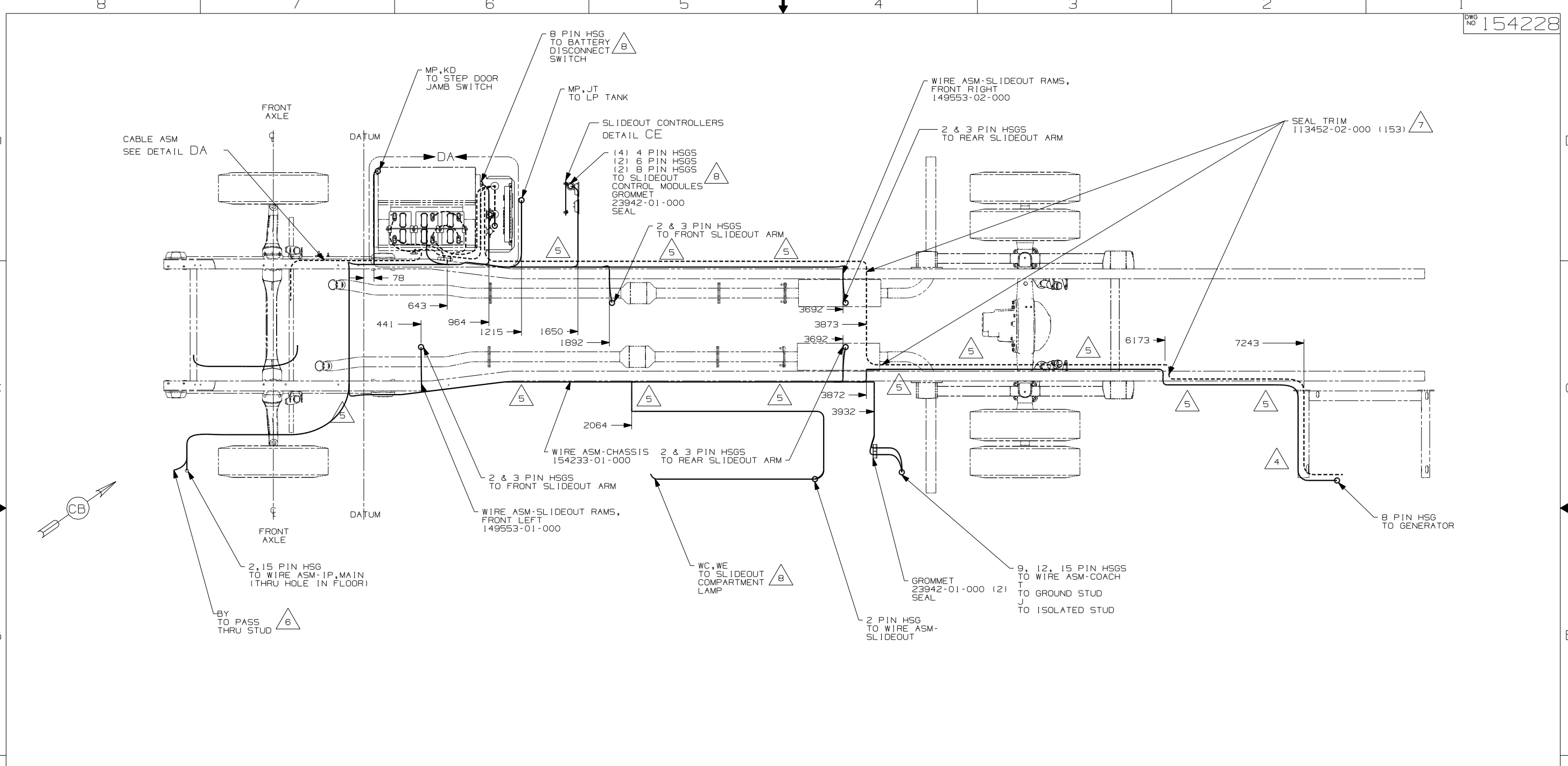
| | | | |
|------------------------------------|------------|---|--------|
| WINNEBAGO | | COPYRIGHT 2004 WINNEBAGO INDUSTRIES, INC. | |
| DFT | ORIG. DATE | ALL DIMENSIONS ARE IN MILLIMETERS | |
| CHKR | | FIRST USED 06 D34A | |
| P.E. | | UNSPECIFIED TOLERANCES ARE: | |
| M.E. | | WHOLE DIM (X) | : 1 |
| DSNR | | ONE-PLACE (X.X) | : 1.5 |
| | | TWO-PLACE (X.XX) | : 0.50 |
| | | ANGLE | : 1° |
| THIRD ANGLE PROJECTION | | MATERIAL: | |
| DO NOT SCALE DRAWING | | | |
| TITLE: WIRING INSTL-CHASSIS | | | |
| SHEET 1 of 4 | | PART NO 154228 | |
| REF: | | 1 11/14/2005 | |

FOR ELECTRICAL
TORQUE
SPECIFICATIONS
SEE DWG NO.
128783-01-000

FOR
ELECTRICAL
CALLOUTS
SEE DWG NO.
121339-01-000

STUD-ISOLATED
86233-01-000
SCREW
C10-10-12F (2)
NUT
D39-06-00B
SEE DETAIL AB

VIEW AA 16M



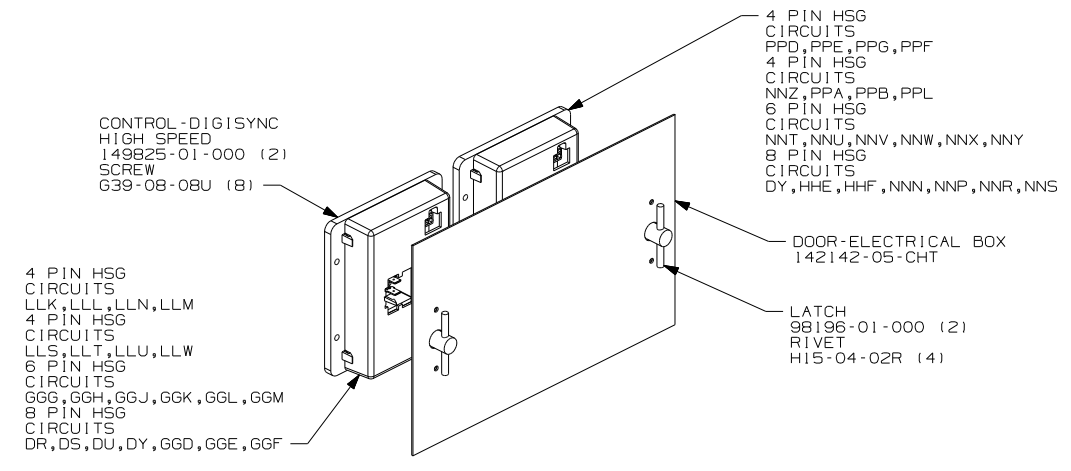
- 8 SEE WIRING INSTL-12V, BODY FOR ADDITIONAL INFORMATION.
 - 7 COVER SHARP EDGES WHERE WIRE CROSSES FRAME RAIL.
 - 6 SEE WIRING INSTL-FRONT END FOR ADDITIONAL INFORMATION.
 - 5 CLAMP 83610-01-000, SCREW G11-10-16B.
 - 4 WIRE TIE 8343-04-000. FASTEN EVERY 600mm MINIMUM.
3. ALL DIMENSIONS ARE FROM DATUM UNLESS OTHERWISE SPECIFIED.
2. SECURE CONDUIT 41953, TAB AS REQUIRED, OVER ALL WIRES IN CONTACT WITH SHARP EDGES.
1. LEGEND: — WINNEBAGO: - - - - - CABLE: - - - - - CHASSIS SUPPLIED WIRING.

265 CODES/STANDARDS - CSA/CMVSS
 1PN WORKHORSE CHASSIS - 20,700# GVWR
 1B1 CODES/STANDARDS - USA

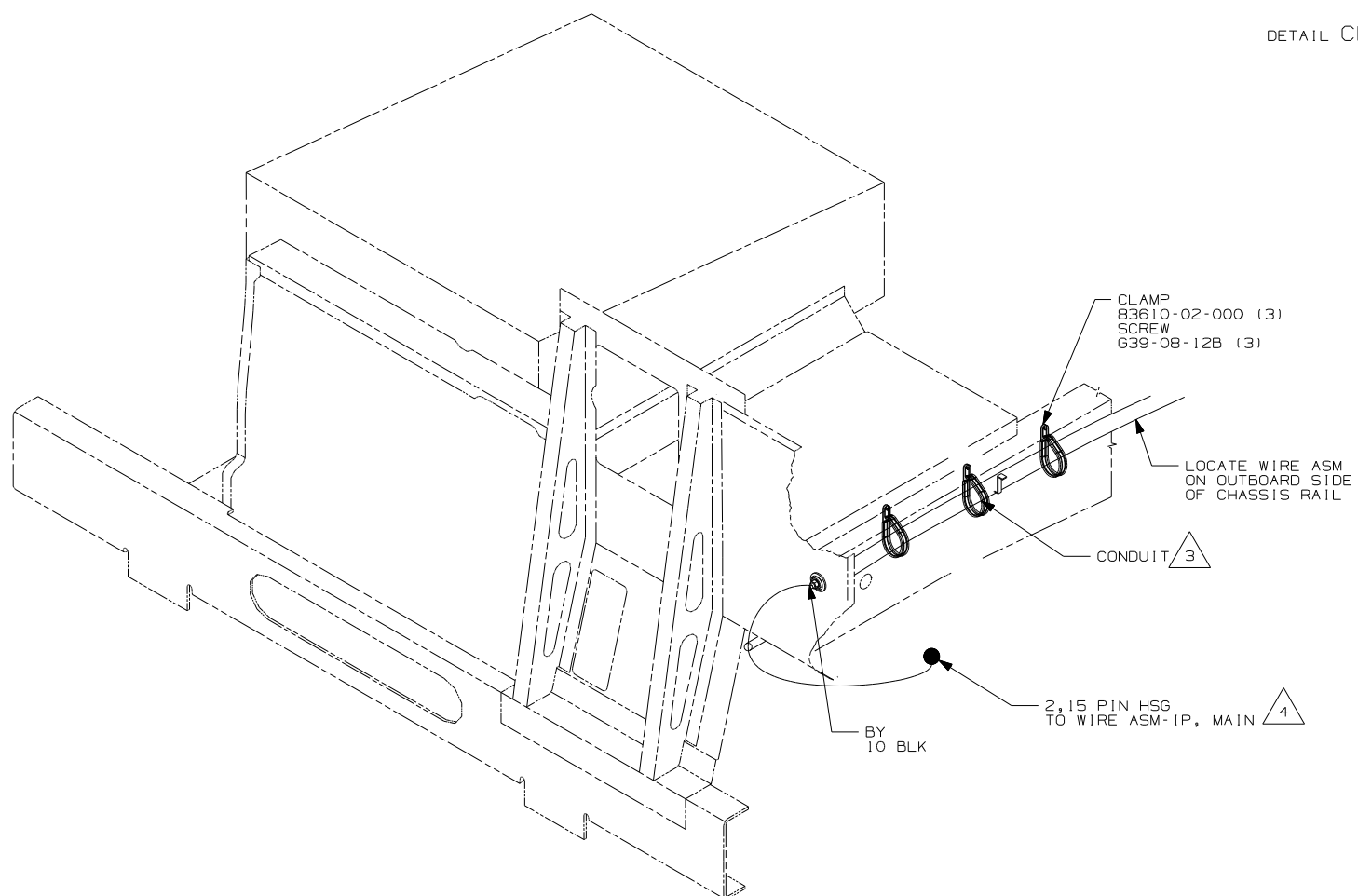
| | |
|-----------------------------|----------------|
| FIRST USED | |
| 06 D34A | |
| DO NOT SCALE DRAWING | |
| TITLE: WIRING INSTL-CHASSIS | |
| SHEET 2 | PART NO 154228 |

FOR ELECTRICAL TORQUE SPECIFICATIONS SEE DWG NO. 128783-01-000

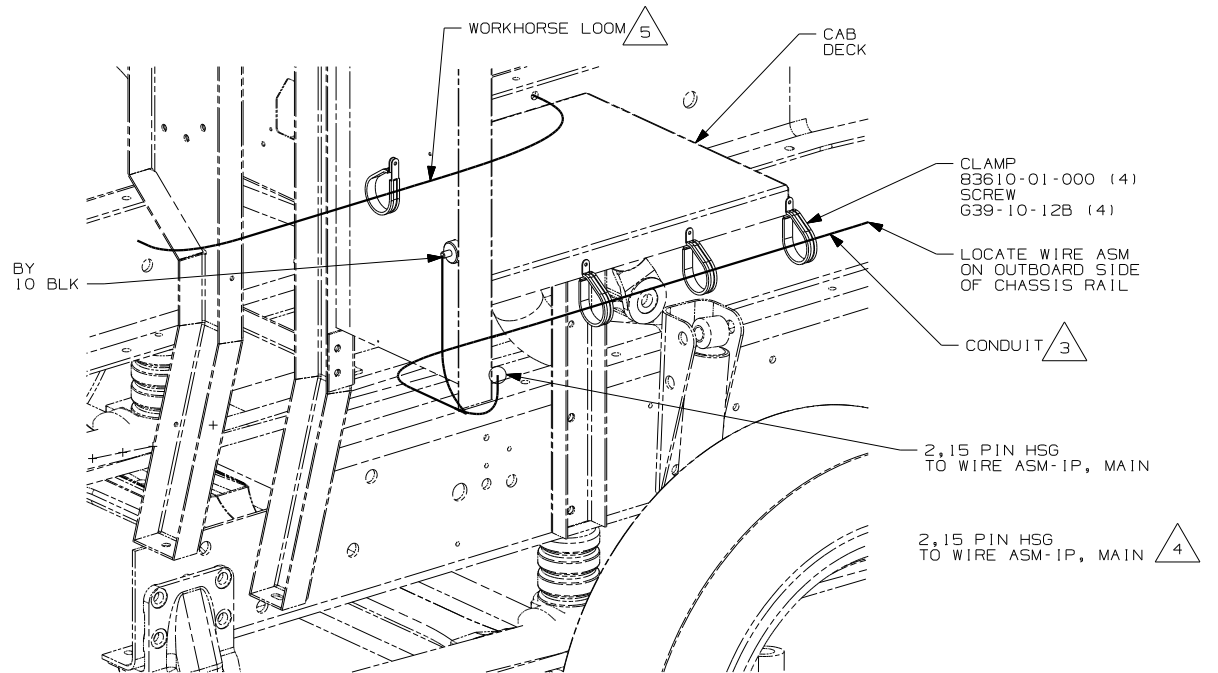
FOR ELECTRICAL CALLOUTS SEE DWG NO. 121339-01-000



DETAIL CE



VIEW CA 16M



VIEW CB 1PN

- 5. CLAMP WORKHORSE ENGINE HARNESS TO CAB DECK TO PROTECT HARNESS FROM DAMAGE.
- 4. ROUTE WIRE THRU HOLE IN CAB FLOOR.
- 3. COVER WITH CONDUIT 41953-10-000 AND 41953-11-000 AS REQUIRED.
- 2. CONNECT CABLES TO COACH SIDE OF BATTERY DISCONNECT WHEN BATTERY DISCONNECT IS USED.

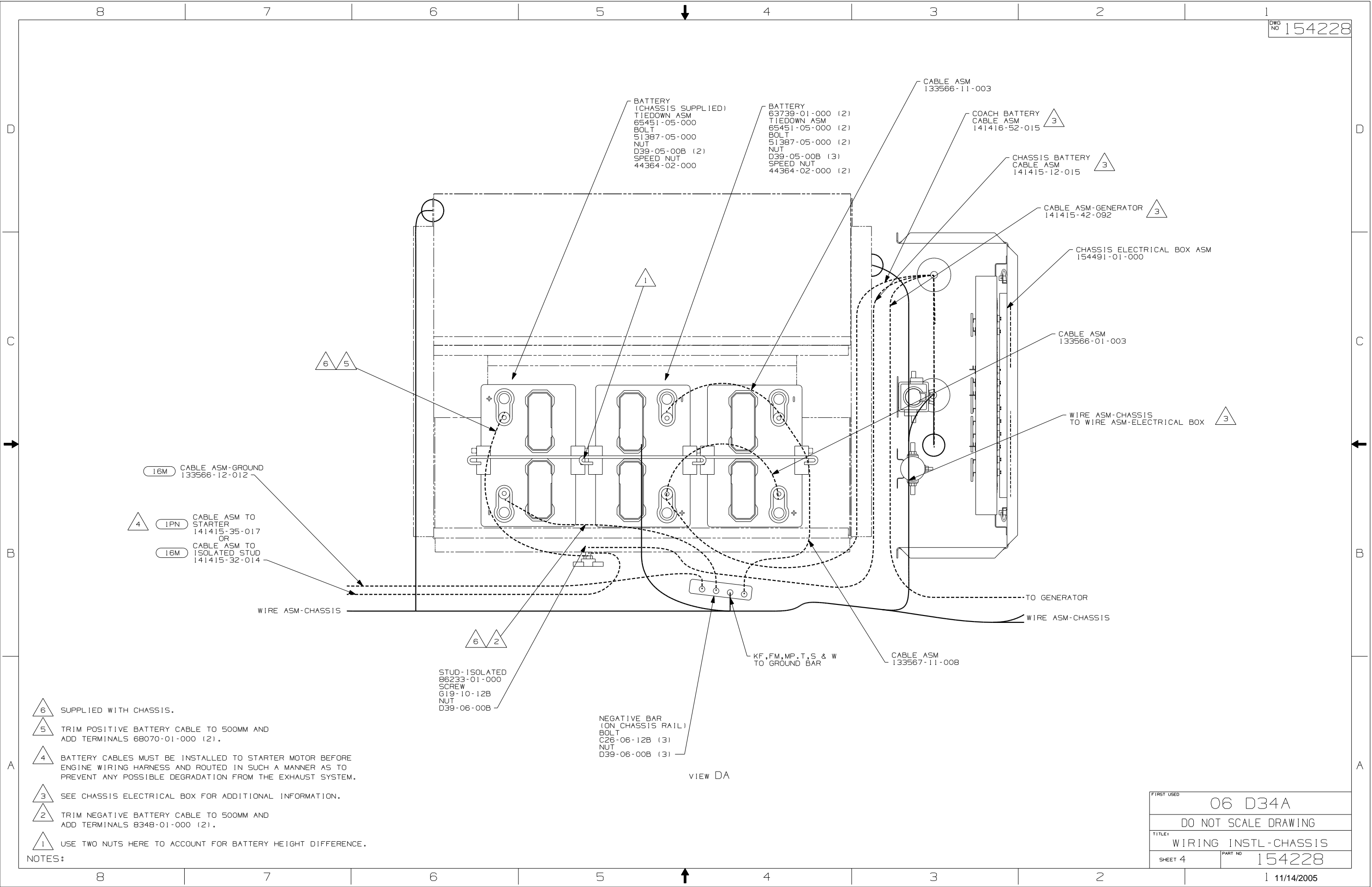
NOTES:
1. LEGEND: — WINNEBAGO: - - - - - CABLE: - - - - - CHASSIS SUPPLIED WIRING.

- 265 CODES/STANDARDS - CSA/CMVSS
- 1PN WORKHORSE 20,700#
- 1B1 CODES/STANDARDS - USA
- 16M FORD CHASSIS - 20,500# GVWR

FOR ELECTRICAL
TORQUE
SPECIFICATIONS
SEE DWG NO.
128783-01-000

(X-X)
FOR
ELECTRICAL
CALLOUTS
SEE DWG NO.
121339-01-000

| | |
|--------------------------------|-------------------|
| FIRST USED | |
| 06 D34A | |
| DO NOT SCALE DRAWING | |
| TITLE: WIRING INSTL-CHASSIS | |
| SHEET 3 | PART NO 154228 |



BATTERY
(CHASSIS SUPPLIED)
TIEDOWN ASM
65451-05-000
BOLT
51387-05-000
NUT
D39-05-00B (2)
SPEED NUT
44364-02-000

BATTERY
63739-01-000 (2)
TIEDOWN ASM
65451-05-000 (2)
BOLT
51387-05-000 (2)
NUT
D39-05-00B (3)
SPEED NUT
44364-02-000 (2)

COACH BATTERY
CABLE ASM
141416-52-015

CHASSIS BATTERY
CABLE ASM
141415-12-015

CABLE ASM-GENERATOR
141415-42-092

CHASSIS ELECTRICAL BOX ASM
154491-01-000

CABLE ASM
133566-01-003

WIRE ASM-CHASSIS
TO WIRE ASM-ELECTRICAL BOX

16M CABLE ASM-GROUND
133566-12-012

4 1PN CABLE ASM TO
STARTER
141415-35-017
OR

16M CABLE ASM TO
ISOLATED STUD
141415-32-014

WIRE ASM-CHASSIS

WIRE ASM-CHASSIS

6 2
STUD-ISOLATED
86233-01-000
SCREW
G19-10-12B
NUT
D39-06-00B

NEGATIVE BAR
(ON CHASSIS RAIL)
BOLT
C26-06-12B (3)
NUT
D39-06-00B (3)

KF,FM,MP,T,S & W
TO GROUND BAR

CABLE ASM
133567-11-008

TO GENERATOR

VIEW DA

- 6 SUPPLIED WITH CHASSIS.
- 5 TRIM POSITIVE BATTERY CABLE TO 500MM AND ADD TERMINALS 68070-01-000 (2).
- 4 BATTERY CABLES MUST BE INSTALLED TO STARTER MOTOR BEFORE ENGINE WIRING HARNESS AND ROUTED IN SUCH A MANNER AS TO PREVENT ANY POSSIBLE DEGRADATION FROM THE EXHAUST SYSTEM.
- 3 SEE CHASSIS ELECTRICAL BOX FOR ADDITIONAL INFORMATION.
- 2 TRIM NEGATIVE BATTERY CABLE TO 500MM AND ADD TERMINALS 8348-01-000 (2).
- 1 USE TWO NUTS HERE TO ACCOUNT FOR BATTERY HEIGHT DIFFERENCE.

NOTES:

| | |
|----------------------|----------------------|
| FIRST USED | 06 D34A |
| DO NOT SCALE DRAWING | |
| TITLE | WIRING INSTL-CHASSIS |
| SHEET 4 | PART NO 154228 |