

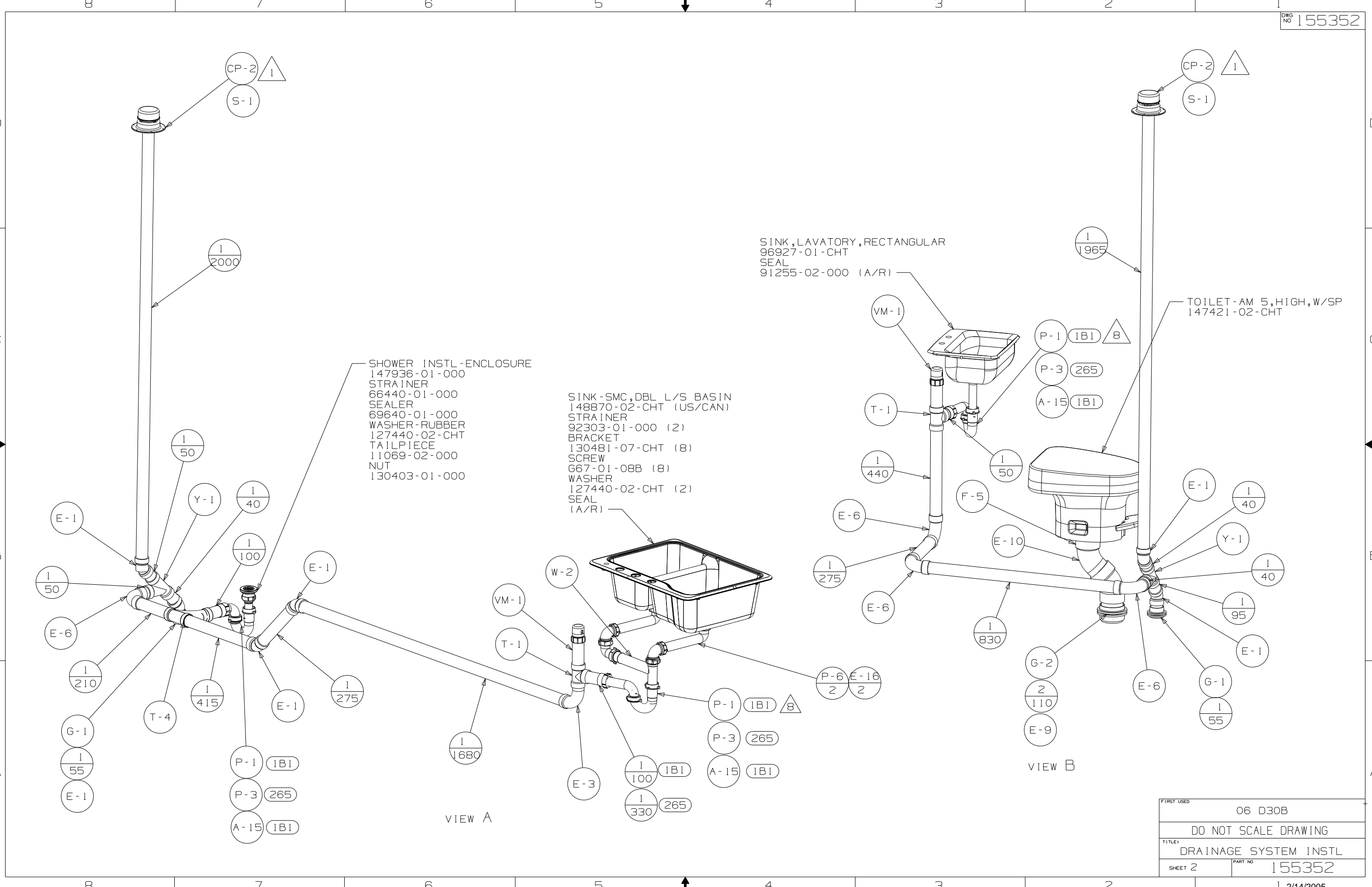
- NOTES:
- 1 VENT PIPE MUST PROJECT 51 MIN AND 64 MAX ABOVE ROOF FOR PROPER FIT.
 - 2 SLOPE OF HORIZONTAL PIPING TO BE 6 PER 305 mm.
 - 3 SLOPE OF TRAP ARM MUST BE 6 PER 305 mm.
 - 4 ALL PIPE AND FITTING TO BE ASSEMBLED WITH SOLVENT 4020-01-000 (US), 4020-02-000 (CAN).
 - 5 ALL EXTERIOR OPENINGS AROUND PIPE TO BE SEALED WITH 110744-01-000.
 - 6 SEAL AROUND SHOWER WITH SILICONE.
 - 7 VALVE TERMINATION TEE TO BE POSITIONED AT 10° DOWN AND OUTBOARD.
 - 8 TRIM P-TRAP EXTENSION TO FIT.

FRONT OF COACH

(265) CODES/STDS-CSA/CMVSS
 (1B1) CODES/STANDARDS-USA

WINNEBAGO		COPYRIGHT 2005 WINNEBAGO INDUSTRIES, INC.	
DFT-ORIG	ORIG. DATE	ALL DIMENSIONS ARE IN MILLIMETERS	
CHKR		FIRST USED	
P.E.		06 D30B	
M.E.		UNSPECIFIED TOLERANCES ARE:	
DSNR		MATERIAL:	
		WHOLE DIM (X) :	3
		ONE-PLACE (X.X) :	
		TWO-PLACE (X.XX) :	
		ANGLE :	
THIRD ANGLE PROJECTION		DO NOT SCALE DRAWING	
TITLE:		DRAINAGE SYSTEM INSTL	
SHEET 1 OF 3	PART NO	155352	

FOR
DRAINAGE
CALLOUTS
SEE DWG NO
116229-01-000



SHOWER INSTL-ENCLOSURE
 147936-01-000
 STRAINER
 66440-01-000
 SEALER
 69640-01-000
 WASHER-RUBBER
 127440-02-CHT
 TAILPIECE
 11069-02-000
 NUT
 130403-01-000

SINK-SMC, DBL L/S BASIN
 148870-02-CHT (US/CAN)
 STRAINER
 92303-01-000 (2)
 BRACKET
 130481-07-CHT (8)
 SCREW
 G67-01-08B (8)
 WASHER
 127440-02-CHT (2)
 SEAL
 (A/R)

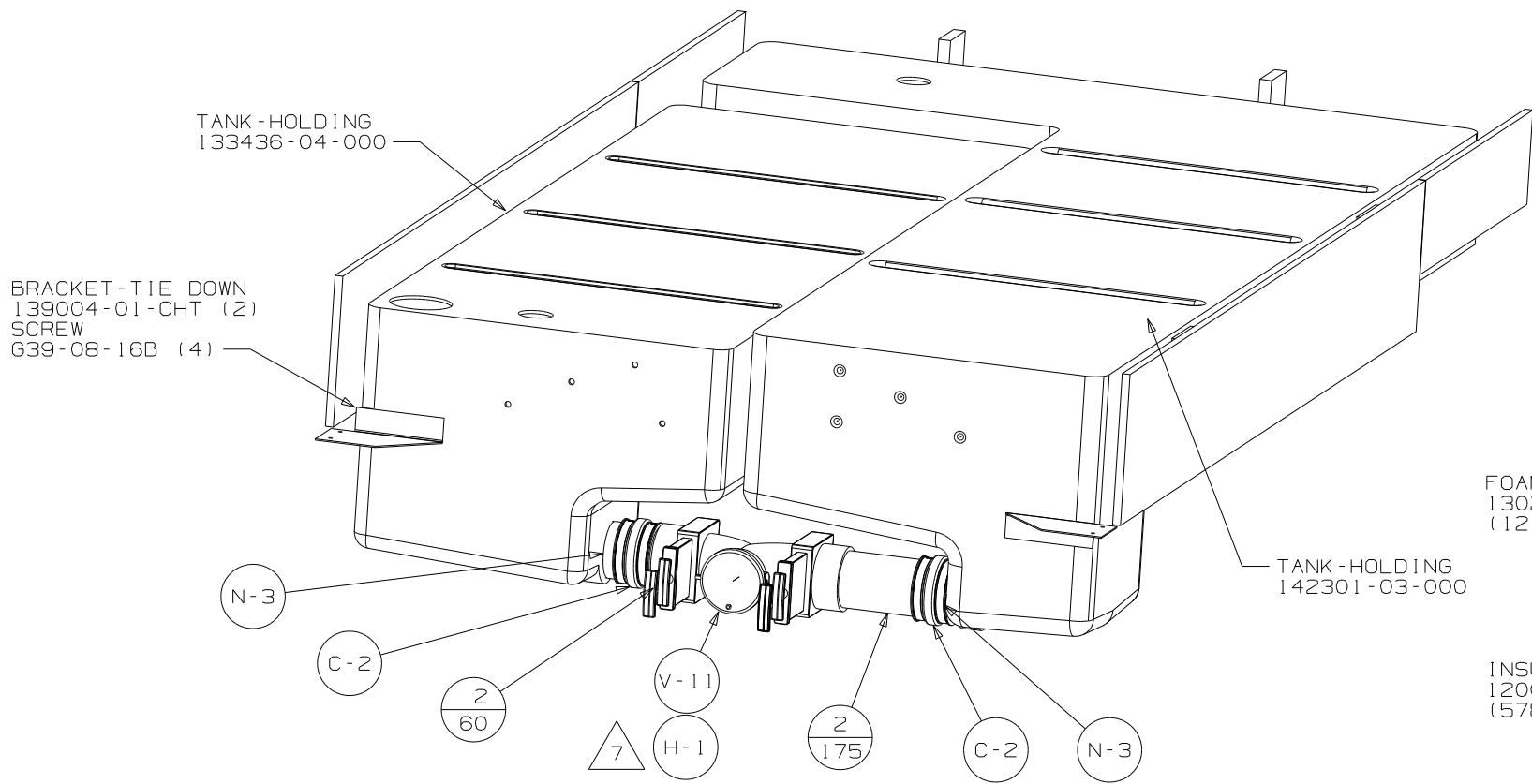
SINK, LAVATORY, RECTANGULAR
 96927-01-CHT
 SEAL
 91255-02-000 (A/R)

TOILET-AM 5,HIGH,W/SP
 147421-02-CHT

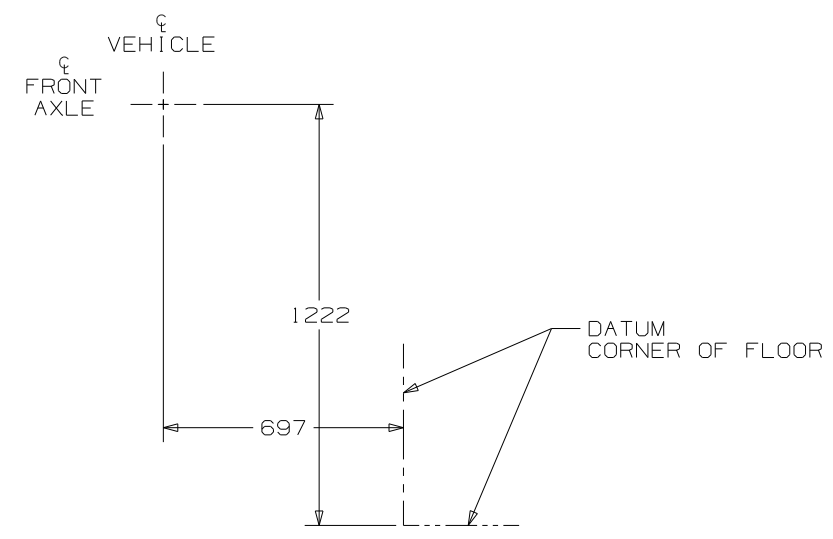
VIEW A

VIEW B

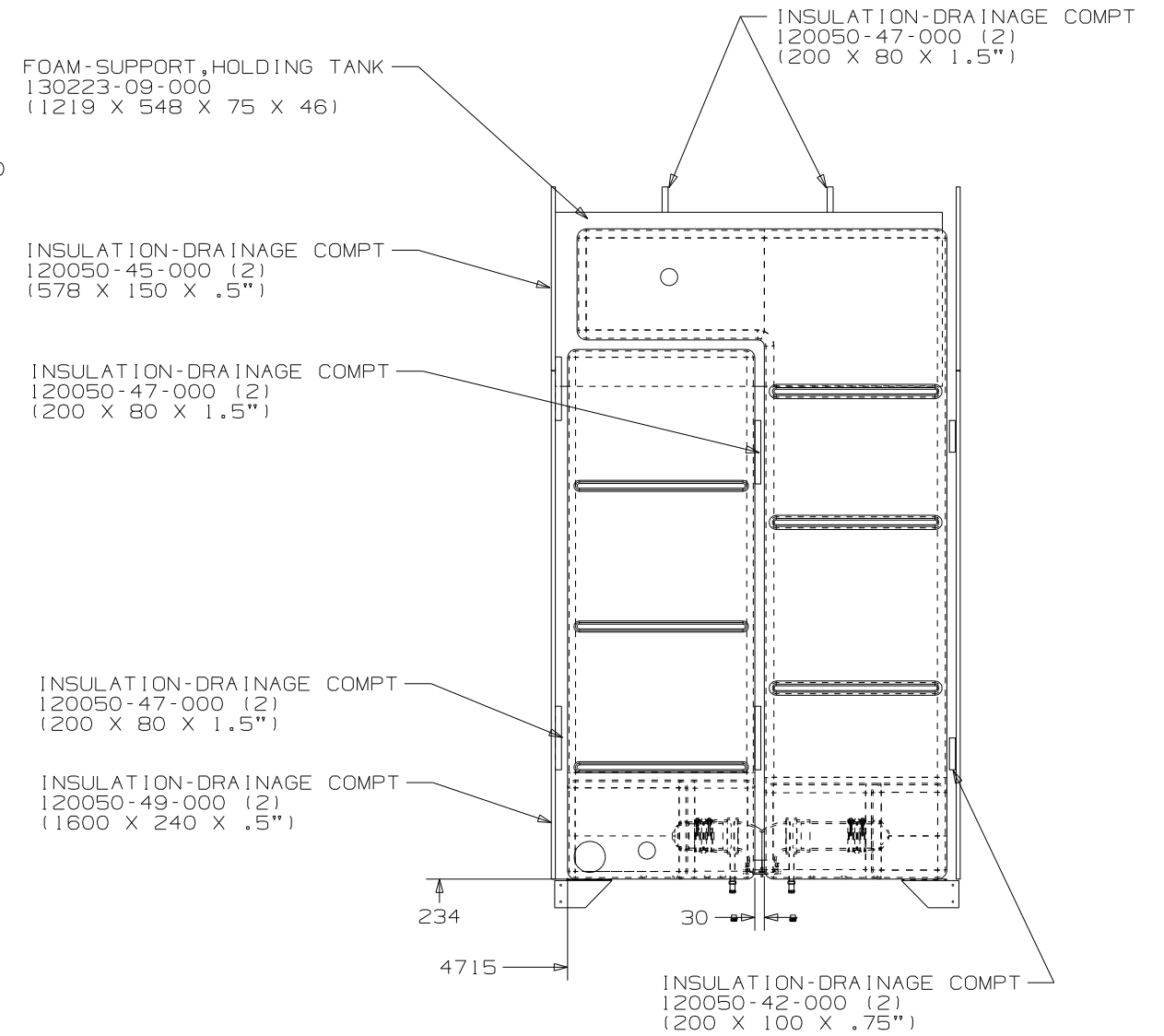
FIRST USED	06 D30B
DO NOT SCALE DRAWING	
TITLE	DRAINAGE SYSTEM INSTL
SHEET 2	PART NO 155352



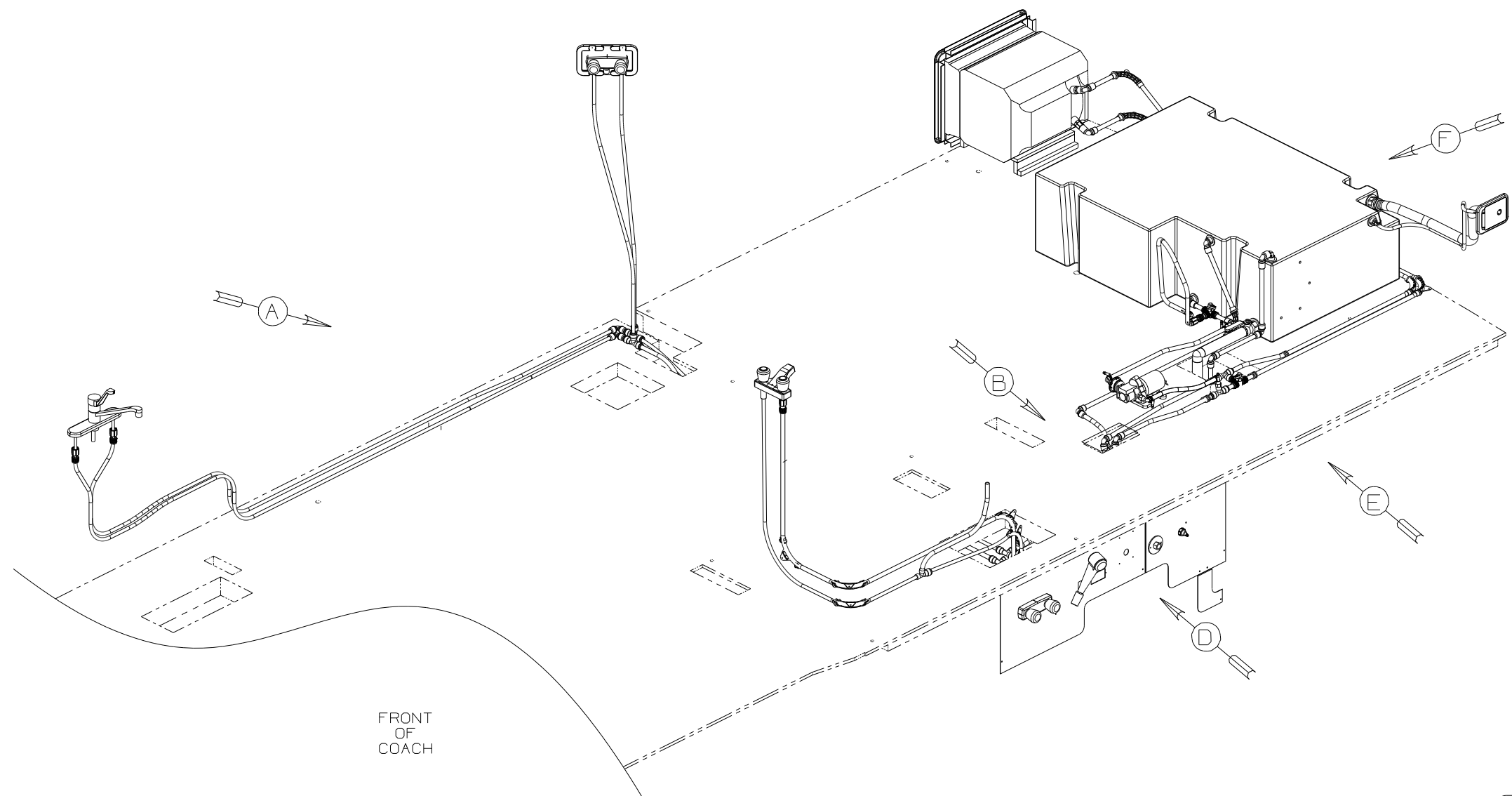
VIEW C



VIEW D



FIRST USED	06 D30B
TITLE	DO NOT SCALE DRAWING DRAINAGE SYSTEM INSTL
SHEET 3	PART NO 155352



FRONT OF COACH

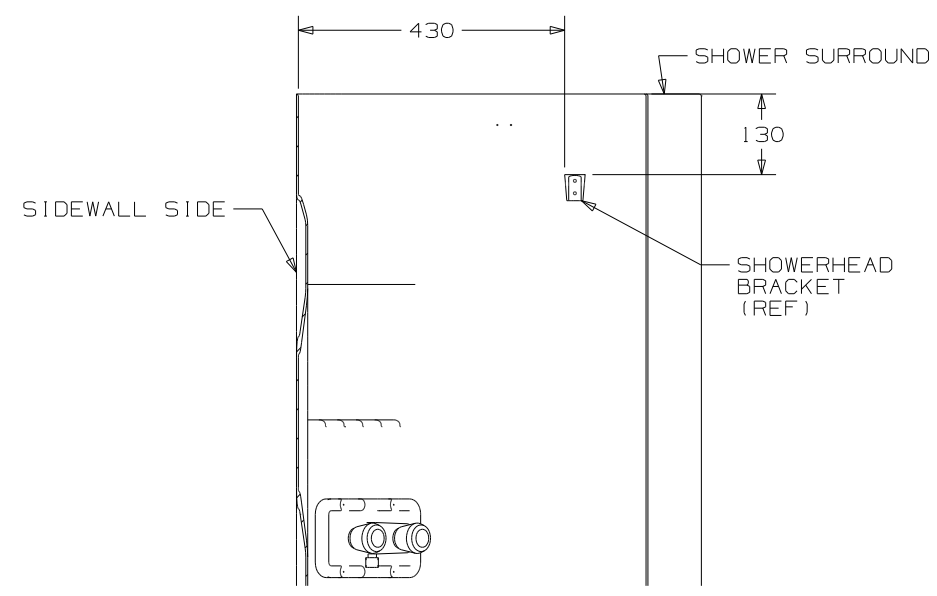
- 10. ADD PIPE WRAP (LADDER SCRAP 110157-02-000) INSULATION.
 - 9. LABEL HOT AND COLD SUPPLY TUBES.
 - 8. TAPE FITTING TO TUBE BEFORE CABINET SET TO PREVENT FITTING FROM MOVING.
 - 7. ADD TEFLON TAPE 10405-01-000.
 - 6. ADD TEFLON TAPE 10405-03-000.
 - 5. ADD TEFLON TAPE 10405-02-000.
 - 4. CLAMPS MUST BE ON BRASS.
3. ALL TUBING TO BE SECURED AT 1200 INTERVALS MAXIMUM WITH CLAMP 10495-01-000 AND SCREW G67-10-12B OR EQUIVALENT.
 2. TUBING TO BE INSTALLED WITH SUFFICIENT SLOPE TO PROVIDE DRAINAGE TO NEAREST VALVE.
 1. PLASTIC FITTINGS TO BE SEALED WITH SEALANT 84456-01-000.

NOTES:

- (64R) EXTERIOR WASH STATION
- (1J4) EXTERIOR WASH STATION W/O
- (53Z) WTR HTR-6GAL/110/LP/MTR/AUTO

WINNEBAGO		COPYRIGHT 2006 WINNEBAGO INDUSTRIES, INC.	
DFTR	ORIG. DATE	ALL DIMENSIONS ARE IN MILLIMETERS	
CHKR		FIRST USED	
P.E.		06 D30B	
M.E.		UNSPECIFIED TOLERANCES ARE:	
DSNR		MATERIAL:	
		WHOLE DIM (X) :	3
		ONE-PLACE (X.X) :	
		TWO-PLACE (X.XX) :	
		ANGLE :	
THIRD ANGLE PROJECTION		DO NOT SCALE DRAWING	
TITLE: WATER SYSTEM INSTL			
SHEET 1 OF 4	PART NO	153170	REV

(X-X)
FOR
WATER
CALLOUTS
SEE DWG NO
116230-01-000

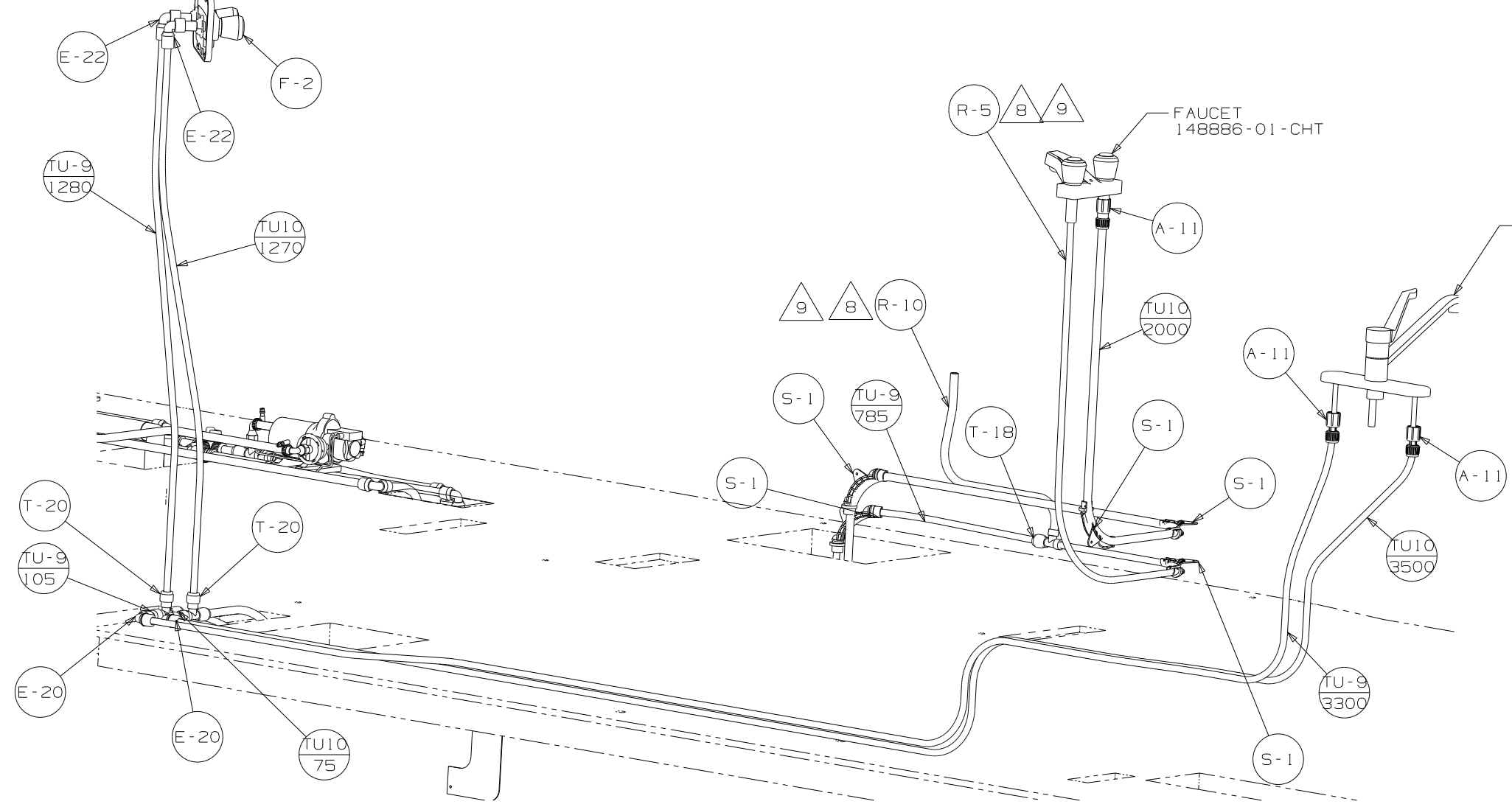


VIEW G

PANEL - SHOWER
78498-01-CHT

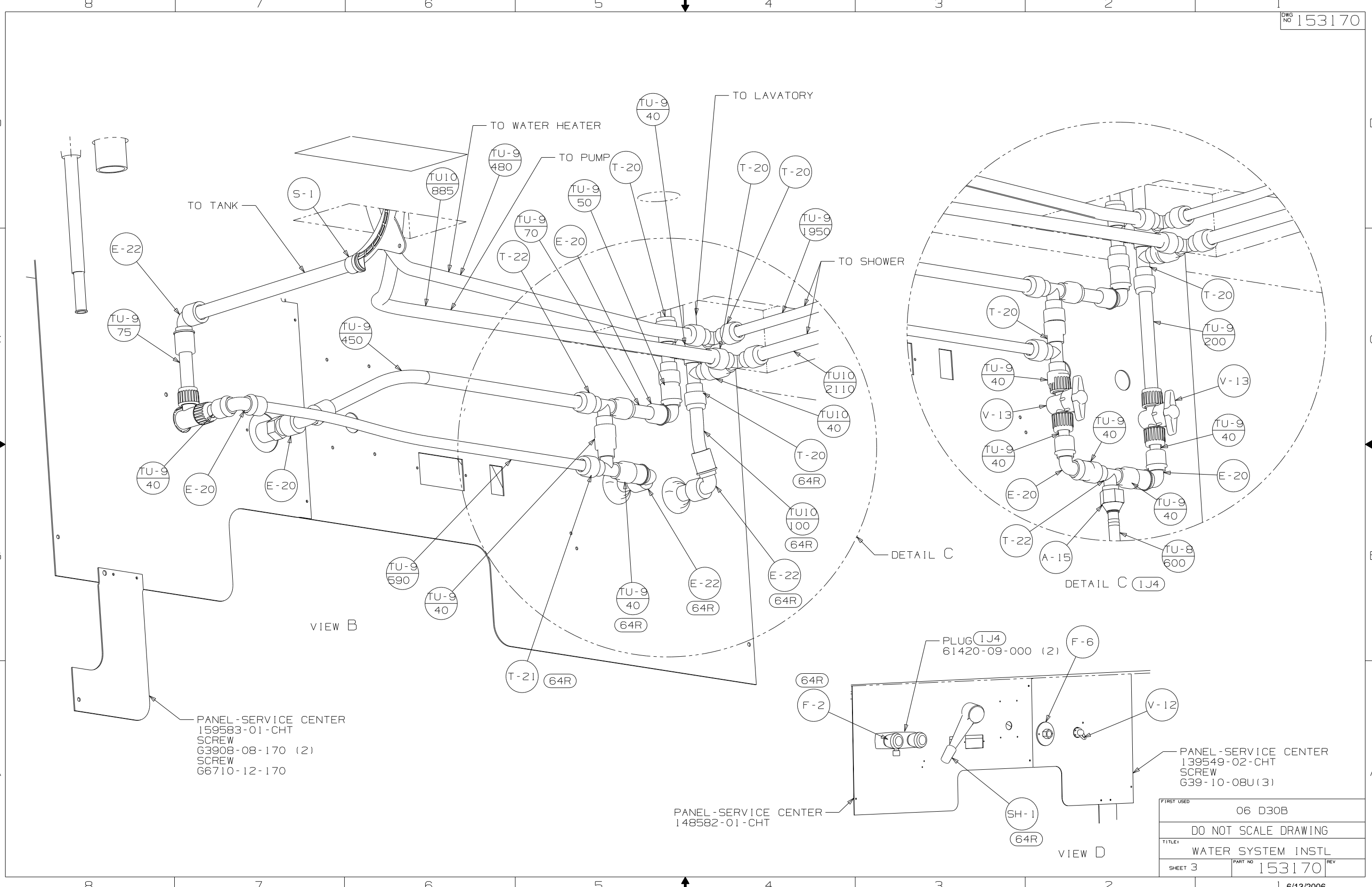
FAUCET
148886-01-CHT

FAUCET
149164-01-CHT
SPACER FAUCET
137079-02-CHT



VIEW A

FIRST USED	06 D30B		
TITLE	DO NOT SCALE DRAWING		
	WATER SYSTEM INSTL		
SHEET 2	PART NO	153170	REV



8 7 6 5 4 3 2 1

D

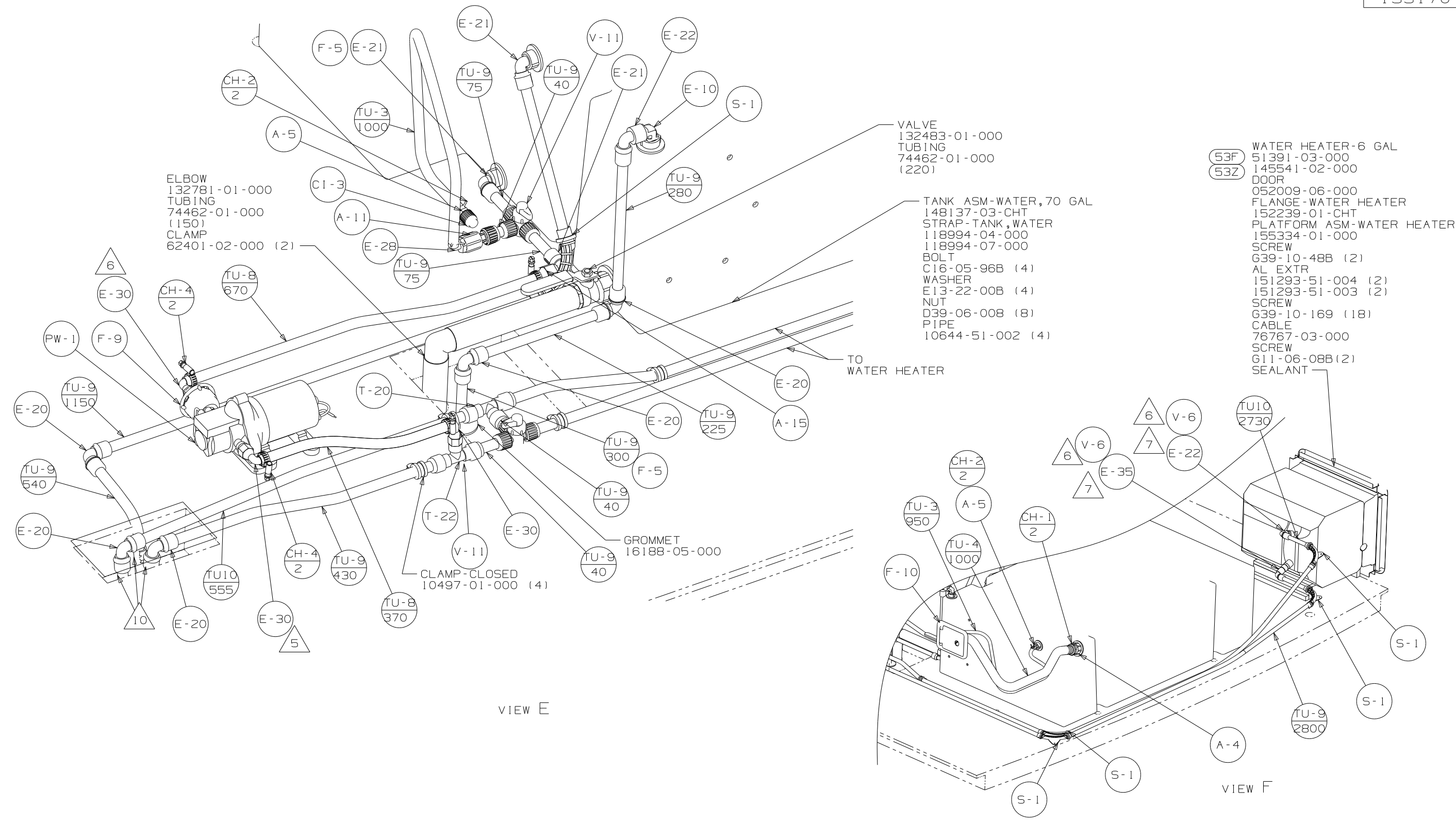
C

B

A

8 7 6 5 4 3 2 1





ELBOW
132781-01-000
TUBING
74462-01-000
(150)
CLAMP
62401-02-000 (2)

VALVE
132483-01-000
TUBING
74462-01-000
(220)

TANK ASM-WATER, 70 GAL
148137-03-CHT
STRAP-TANK, WATER
118994-04-000
118994-07-000
BOLT
C16-05-96B (4)
WASHER
E13-22-00B (4)
NUT
D39-06-008 (8)
PIPE
10644-51-002 (4)

WATER HEATER-6 GAL
51391-03-000
145541-02-000
DOOR
052009-06-000
FLANGE-WATER HEATER
152239-01-CHT
PLATFORM ASM-WATER HEATER
155334-01-000
SCREW
G39-10-48B (2)
AL EXTR
151293-51-004 (2)
151293-51-003 (2)
SCREW
G39-10-169 (18)
CABLE
76767-03-000
SCREW
G11-06-08B(2)
SEALANT

VIEW E

VIEW F

FIRST USED	06 D30B		
TITLE	DO NOT SCALE DRAWING		
TITLE	WATER SYSTEM INSTL		
SHEET 4	PART NO	153170	REV