



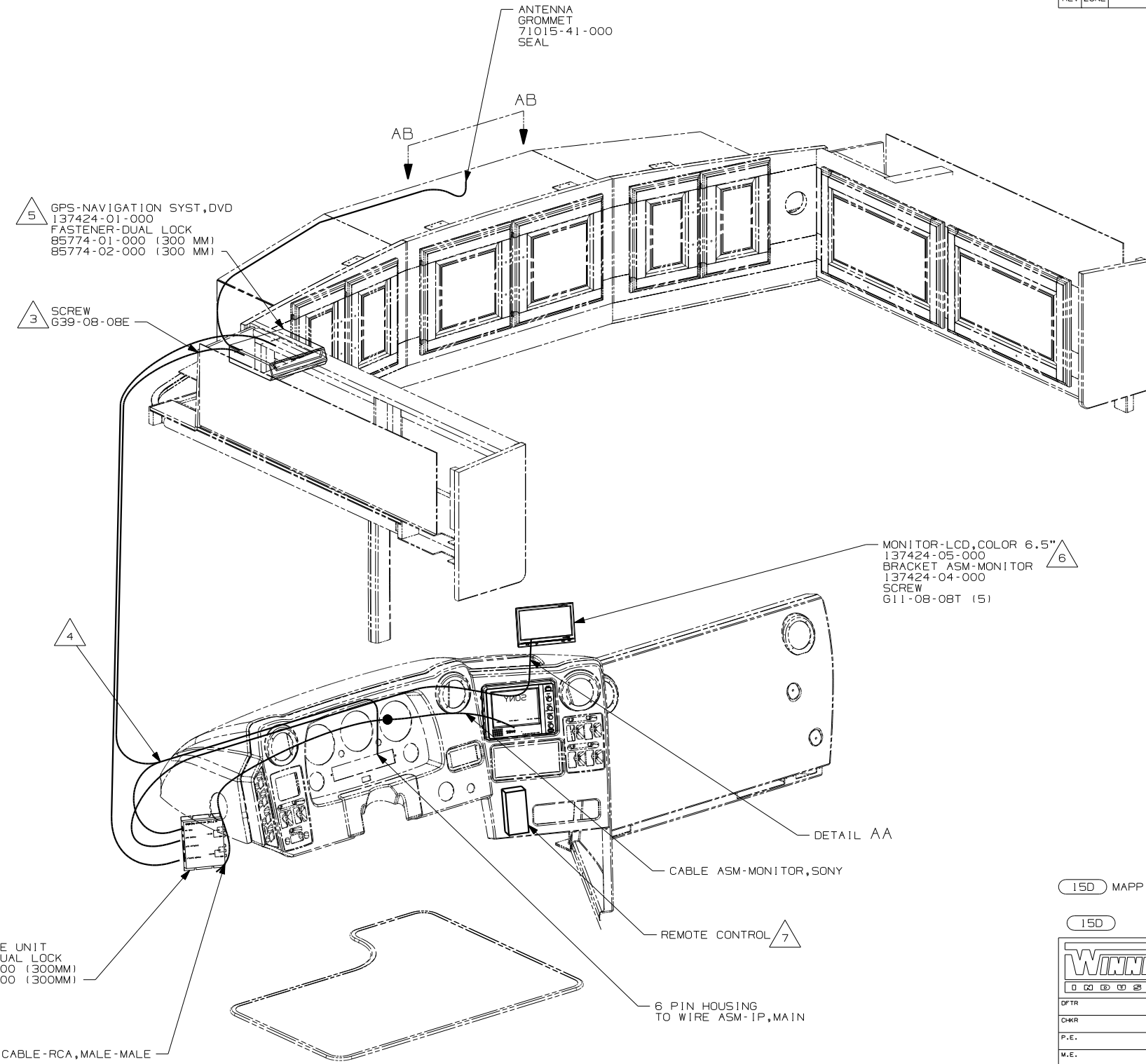
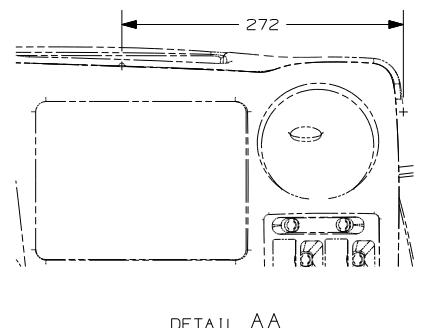
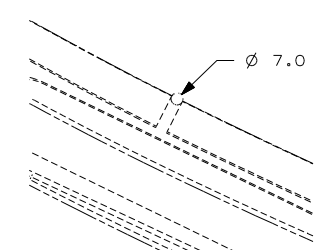
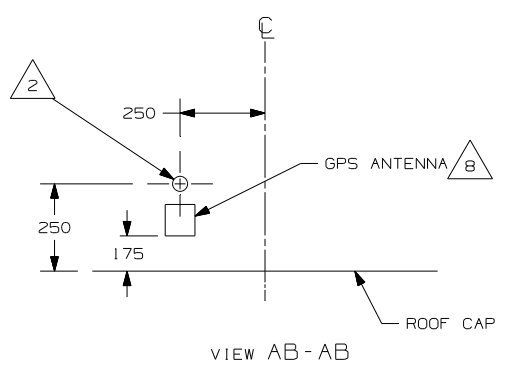
DANGER

Danger of electrical shock, burns or death. Always remove all power sources before attempting any repair, service or diagnostic work. Power can be present from shore power, generator, inverter or battery. All power sources must be disabled and secured before performing any service.



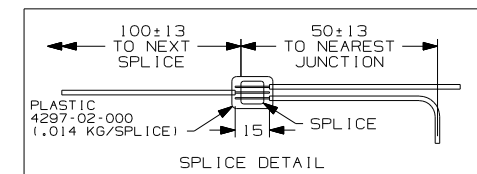
CAUTION

If you lack the skills, tools or equipment to perform diagnostic or repair work leave such work to an authorized Winnebago Industries dealer or other qualified shop.



- NOTES:
- 8 CLEAN ROOF & ANTENNA AND USE TAPE-FOAM,DBL 076322-05 TO ATTACH ANTENNA TO ROOF.
 - 7 MOUNT REMOTE WITH WITH SUPPLIED BRACKET AND SCREWS.
 - 6 MOUNT MONITOR SO IT IS CENTERED IN RECESSED AREA ON DASH.
 - 5 LOAD MAP DVD INTO PLAYER AND SAVE DVD CAS AND DOCUMENTATION WITH OWNER'S MANUAL.
 - 4 SEE SHEET 4 FOR SPLICING INFORMATION.
 - 3 PULL BLACK WIRE FROM LOOM AND SCREW TO STEEL SIDE-PANEL OF OVHD.
 - 2 DRILL 15MM HOLE IN FIBERGLASS ROOF CAP AND SLIDE ANTENNA WIRE INTO GROMMET AND SEAL.
 - 1 AV INTERFACE UNIT COMES WITH MONITOR-LCD,COLOR 6.5"

FOR ELECTRICAL CALLOUTS SEE DWG NO. 121339-01-000



150 MAPPING SYSTEM

150

WINNEBAGO COPYRIGHT 2004 WINNEBAGO INDUSTRIES, INC.

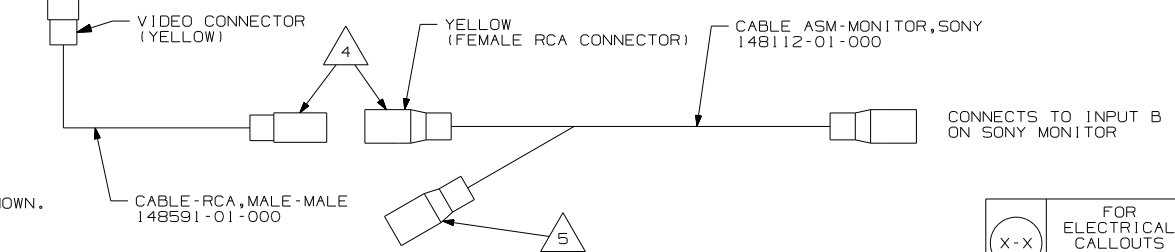
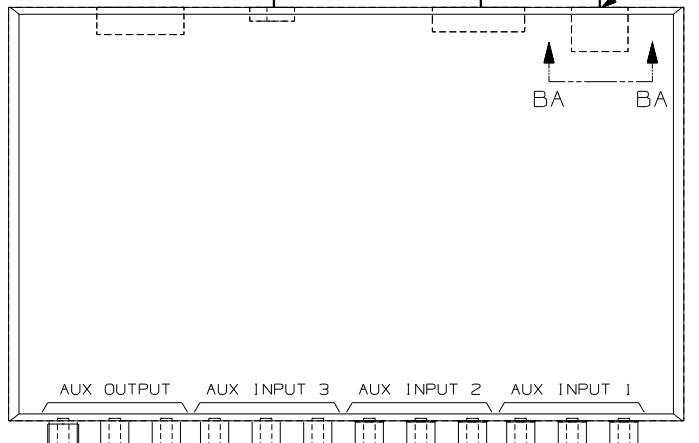
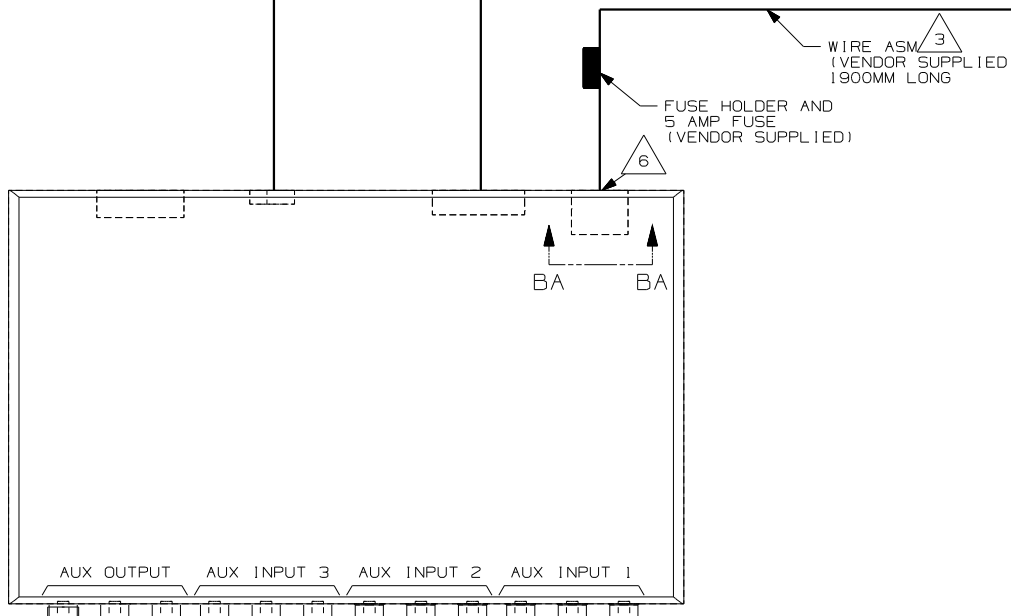
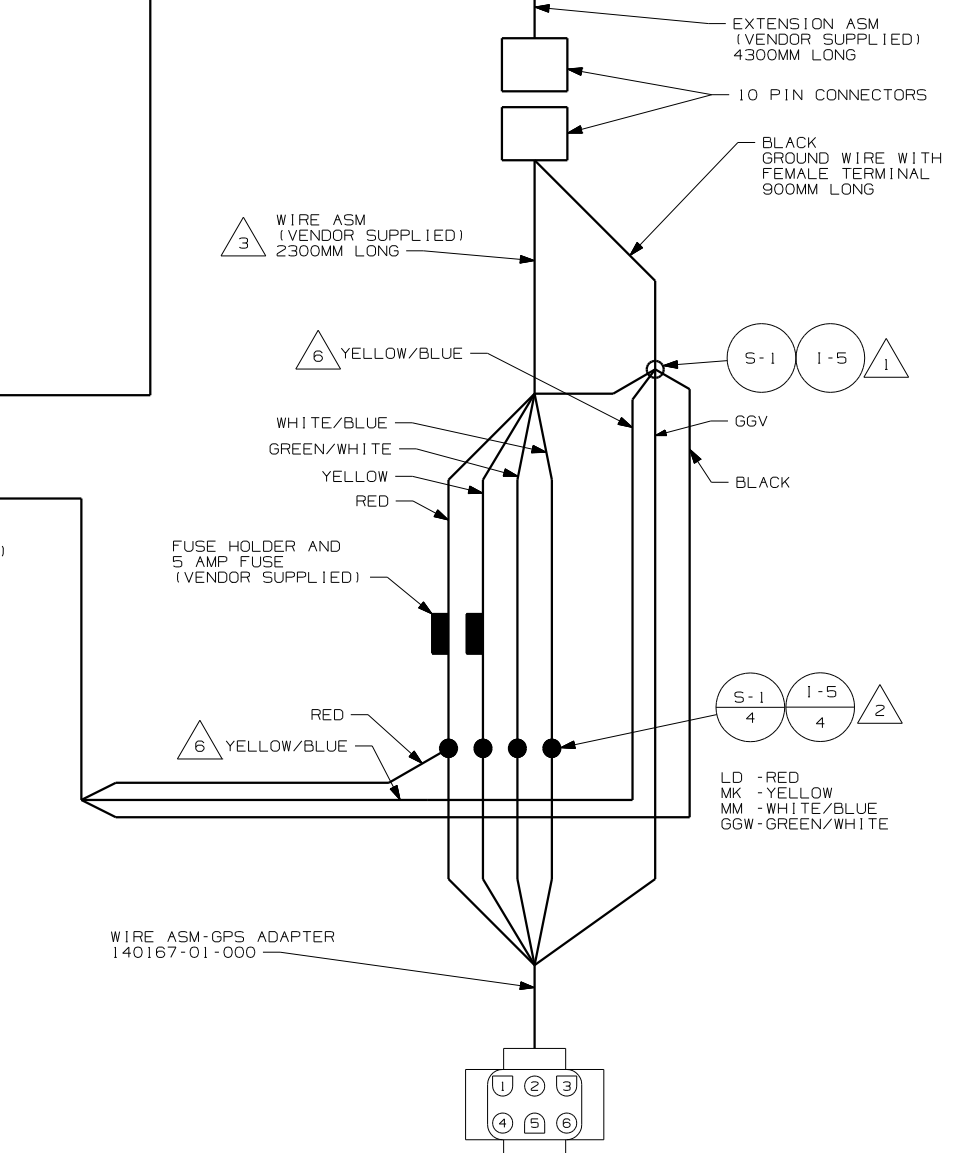
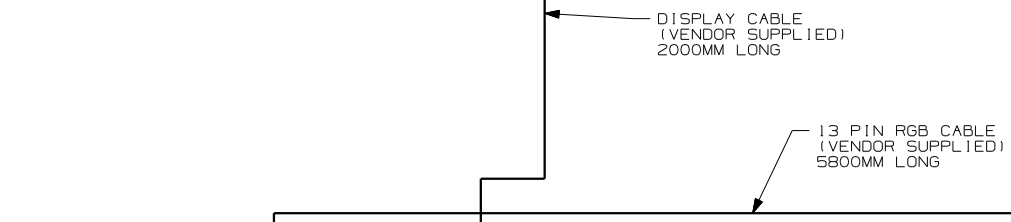
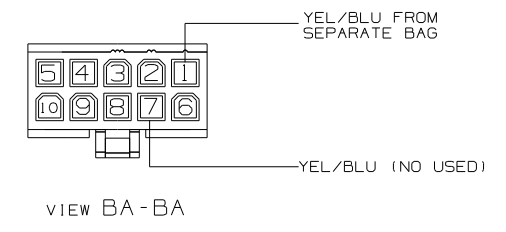
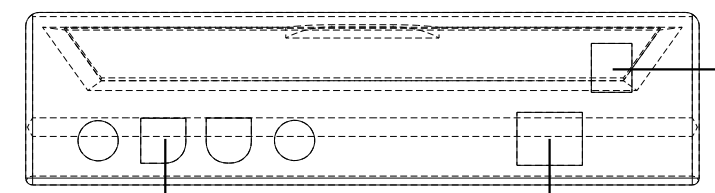
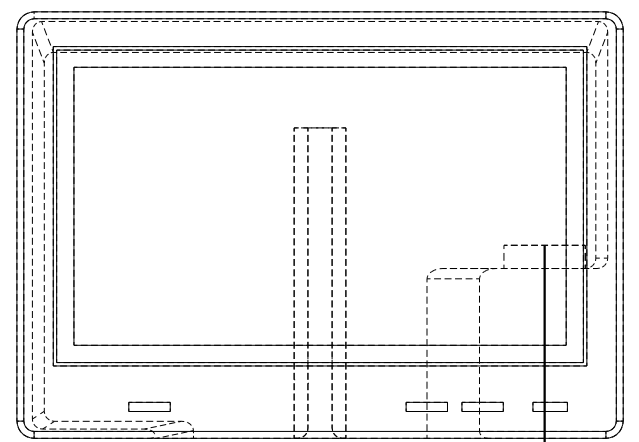
| | |
|-----------------------------|-----------------------------------|
| DFTR | ORIG. DATE |
| CHKR | ALL DIMENSIONS ARE IN MILLIMETERS |
| P.E. | |
| M.E. | FIRST USED |
| DSNR | 05 S-SER |
| UNSPECIFIED TOLERANCES ARE: | MATERIAL: |
| HOLE DIM (X) | |
| ONE-PLACE (X,X) | |
| TWO-PLACE (X,XX) | |
| ANGLE | |
| THIRD ANGLE PROJECTION | |

DO NOT SCALE DRAWING

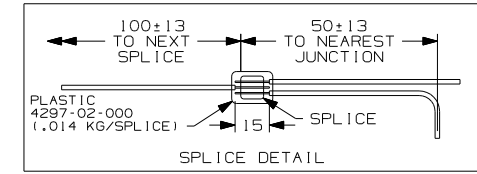
TITLE: WIRING INSTL-GPS

SHEET 1 OF 2 PART NO 148642

| GPS CIRCUIT | FUNCTION | WIN CIRCUIT |
|---------------------|-----------------------------------|-------------|
| YELLOW | BATTERY (+) | MK |
| BLACK | GROUND | GGV |
| RED | IGNITION (+) | LD |
| WHITE/BLUE | ILLUMINATION (+) | MM |
| ORANGE/WHITE | REVERSE LIGHTS (+) | (NOT USED) |
| GREEN/WHITE | VEHICLE SPEED SENSOR (VSS) | GGW |
| YELLOW/BLUE (PIN 7) | PARKING BRAKE (-) | (NOT USED) |
| PINK/SKY BLUE | IN-INT INTERRUPT (-) (AUDIO MUTE) | (NOT USED) |
| YELLOW/BLACK | FOOT BRAKE (+) | (NOT USED) |
| WHITE/BROWN | REMOTE | (NOT USED) |



- NOTES:
- 6 YEL/BLU WIRE IS SUPPLIED WITH MONITOR IN A SEPARATE BAG WITH A TERMINAL. INSERT TERMINAL INTO POSITION 1 OF ALPINE HOUSING AND SPLICE TO GGV-GROUND WIRE. (NOTE: IT IS NOT THE SAME AS THE YEL/BLU FROM POSITION 7 IN THE ALPINE HOUSING)
 - 5 WHITE CONNECTOR IS NOT USED. TAPE BACK INTO LOOM WITH TAPE 8363-01-000.
 - 4 CONNECT TOGETHER
 - 3 CUT WIRE ASM TO AVOID EXCESS WIRE BUNDLING AND TAPE BACK UNUSED WIRES.
 - 2 CUT TERMINALS FROM VENDOR SUPPLIED WIRES AND SPLICE AS SHOWN.
 - 1 CUT RING TERMINAL FROM BLACK WIRE AND SPLICE AS SHOWN.



FOR ELECTRICAL CALLOUTS SEE DWG NO. 121339-01-000

15D MAPPING SYSTEM

15D

| | |
|------------|----------------------|
| FIRST USED | 05 S-SER |
| TITLE | DO NOT SCALE DRAWING |
| TITLE | WIRING INSTL-GPS |
| SHEET 2 | PART NO 148642 |