



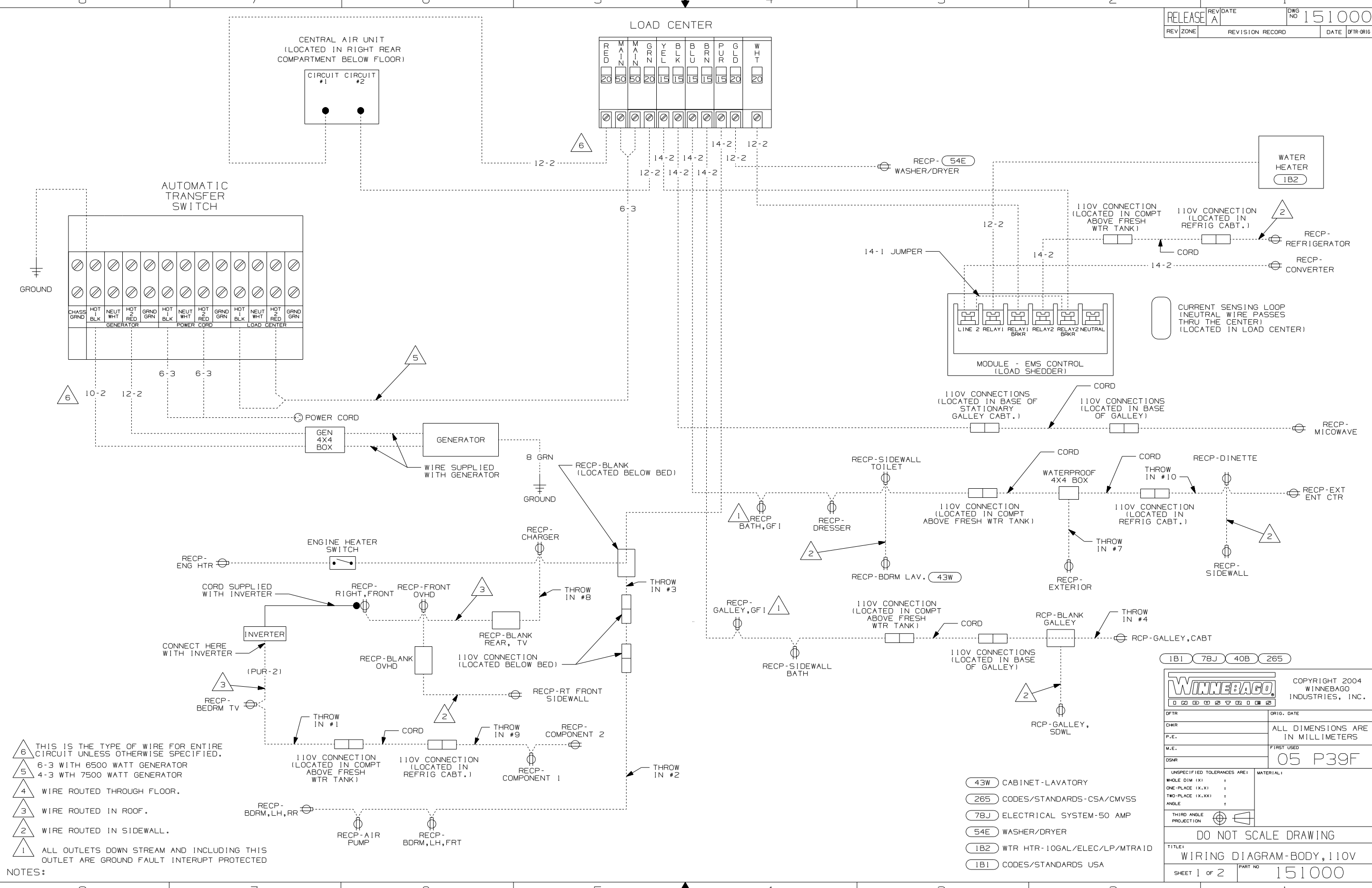
DANGER

Danger of electrical shock, burns or death. Always remove all power sources before attempting any repair, service or diagnostic work. Power can be present from shore power, generator, inverter or battery. All power sources must be disabled and secured before performing any service.



CAUTION

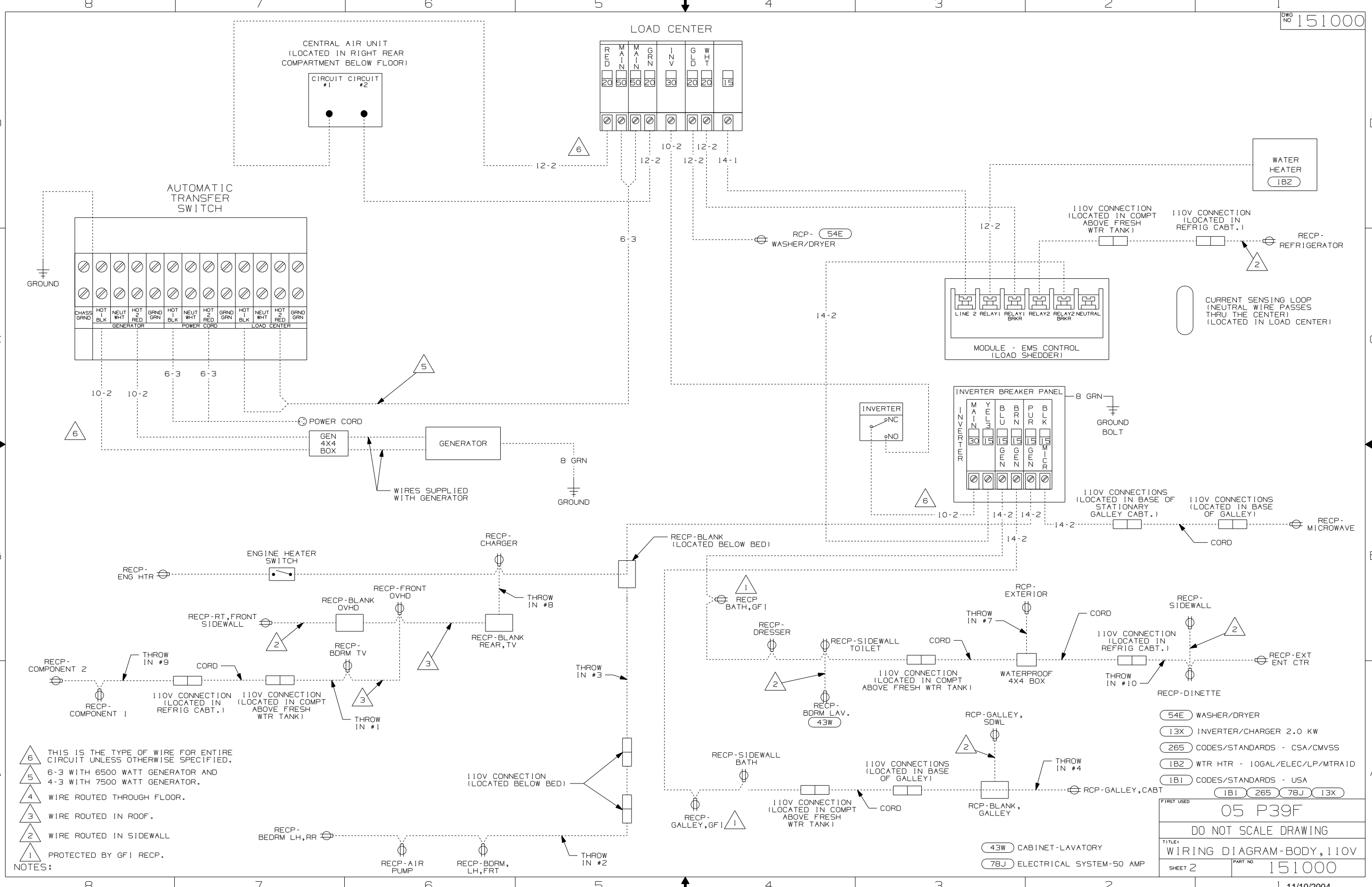
If you lack the skills, tools or equipment to perform diagnostic or repair work leave such work to an authorized Winnebago Industries dealer or other qualified shop.



- NOTES:
- 6 THIS IS THE TYPE OF WIRE FOR ENTIRE CIRCUIT UNLESS OTHERWISE SPECIFIED.
 - 5 6-3 WITH 6500 WATT GENERATOR
 - 4 4-3 WITH 7500 WATT GENERATOR
 - 4 WIRE ROUTED THROUGH FLOOR.
 - 3 WIRE ROUTED IN ROOF.
 - 2 WIRE ROUTED IN SIDEWALL.
 - 1 ALL OUTLETS DOWN STREAM AND INCLUDING THIS OUTLET ARE GROUND FAULT INTERRUPT PROTECTED

- 43W CABINET-LAVATORY
- 265 CODES/STANDARDS-CSA/CMVSS
- 7BJ ELECTRICAL SYSTEM-50 AMP
- 54E WASHER/DRYER
- 1B2 WTR HTR-10GAL/ELEC/LP/MTR/ID
- 1B1 CODES/STANDARDS USA

		COPYRIGHT 2004 WINNEBAGO INDUSTRIES, INC.
DFT#	ORIG. DATE	
CHKR	ALL DIMENSIONS ARE IN MILLIMETERS	
P.E.	FIRST USED	05 P39F
M.E.		
DSNR		
UNSPECIFIED TOLERANCES ARE:		MATERIAL:
WHOLE DIM (X)	:	
ONE-PLACE (X.X)	:	
TWO-PLACE (X.XX)	:	
ANGLE	:	
THIRD ANGLE PROJECTION		
DO NOT SCALE DRAWING		
TITLE: WIRING DIAGRAM-BODY, 110V		
SHEET 1 OF 2	PART NO	151000
REF:	1 11/10/2004	



- NOTES:
- △6 THIS IS THE TYPE OF WIRE FOR ENTIRE CIRCUIT UNLESS OTHERWISE SPECIFIED.
 - △5 6-3 WITH 6500 WATT GENERATOR AND 4-3 WITH 7500 WATT GENERATOR.
 - △4 WIRE ROUTED THROUGH FLOOR.
 - △3 WIRE ROUTED IN ROOF.
 - △2 WIRE ROUTED IN SIDEWALL
 - △1 PROTECTED BY GFI RECP.

(54E)	WASHER/DRYER
(13X)	INVERTER/CHARGER 2.0 KW
(265)	CODES/STANDARDS - CSA/CMVSS
(1B2)	WTR HTR - 10GAL/ELEC/LP/MTR/1D
(1B1)	CODES/STANDARDS - USA
(1B1)	(265) (78J) (13X)
FIRST USED	
05 P39F	
DO NOT SCALE DRAWING	
TITLE: WIRING DIAGRAM-BODY, 110V	
SHEET 2	PART NO 151000

- (43W) CABINET-LAVATORY
- (78J) ELECTRICAL SYSTEM-50 AMP