

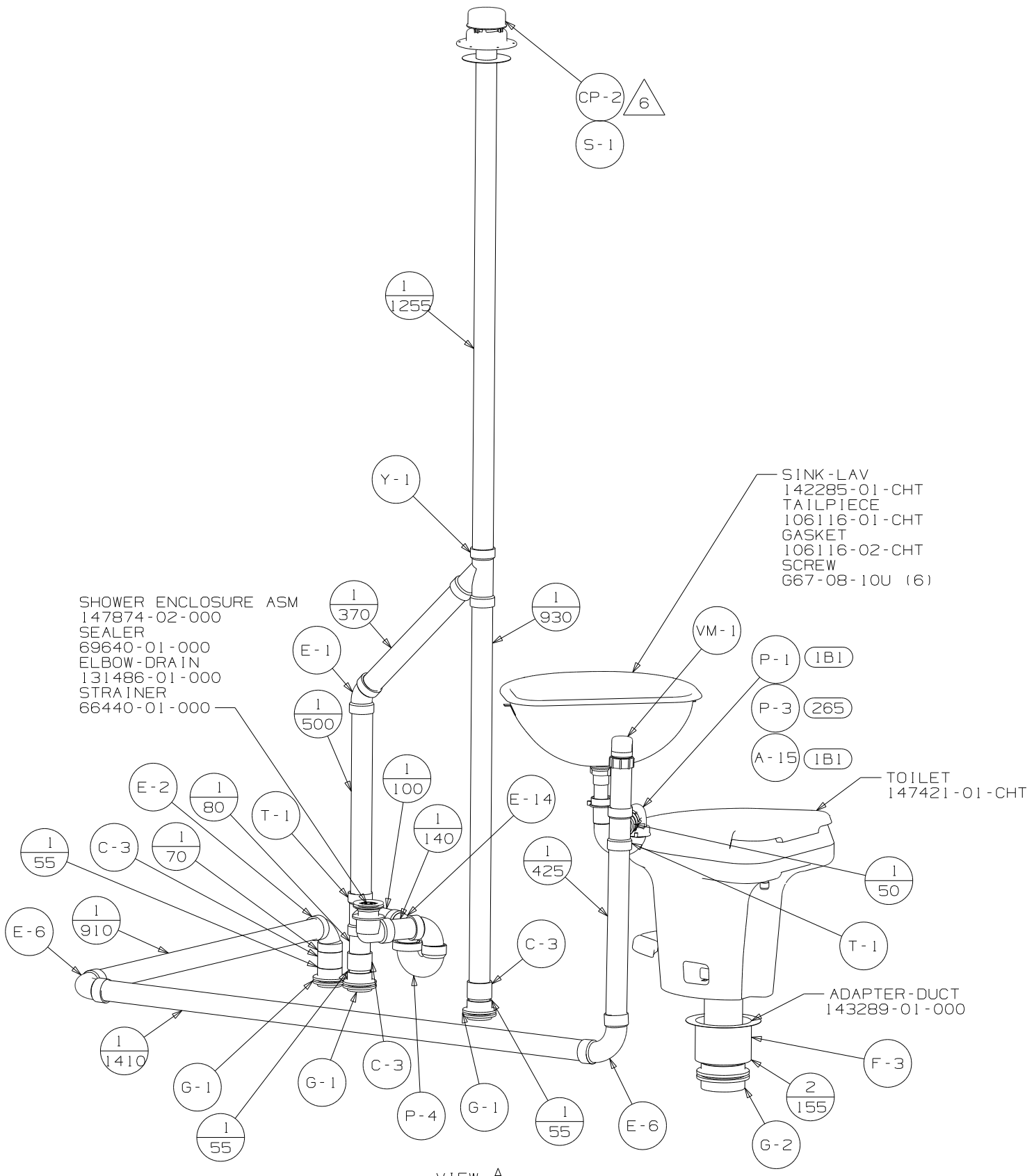
- 6 VENT PIPE MUST PROJECT 51 MIN AND 64 MAX ABOVE ROOF FOR PROPER FIT AND FUNCTION.
- SEAL AROUND SHOWER WITH SILICONE.
  - SLOPE OF TRAP ARM MUST BE 6 PER 305 mm.
  - SLOPE OF HORIZONTAL PIPING TO BE MIN 6 PER 305 mm.
  - ALL EXTERIOR OPENINGS AROUND PIPE TO BE SEALED WITH 110744-01-000.
  - ALL PIPE AND FITTINGS TO BE ASSEMBLED WITH SOLVENT 4020-01-000 (US) 4020-02-000 (CAN).

NOTES:

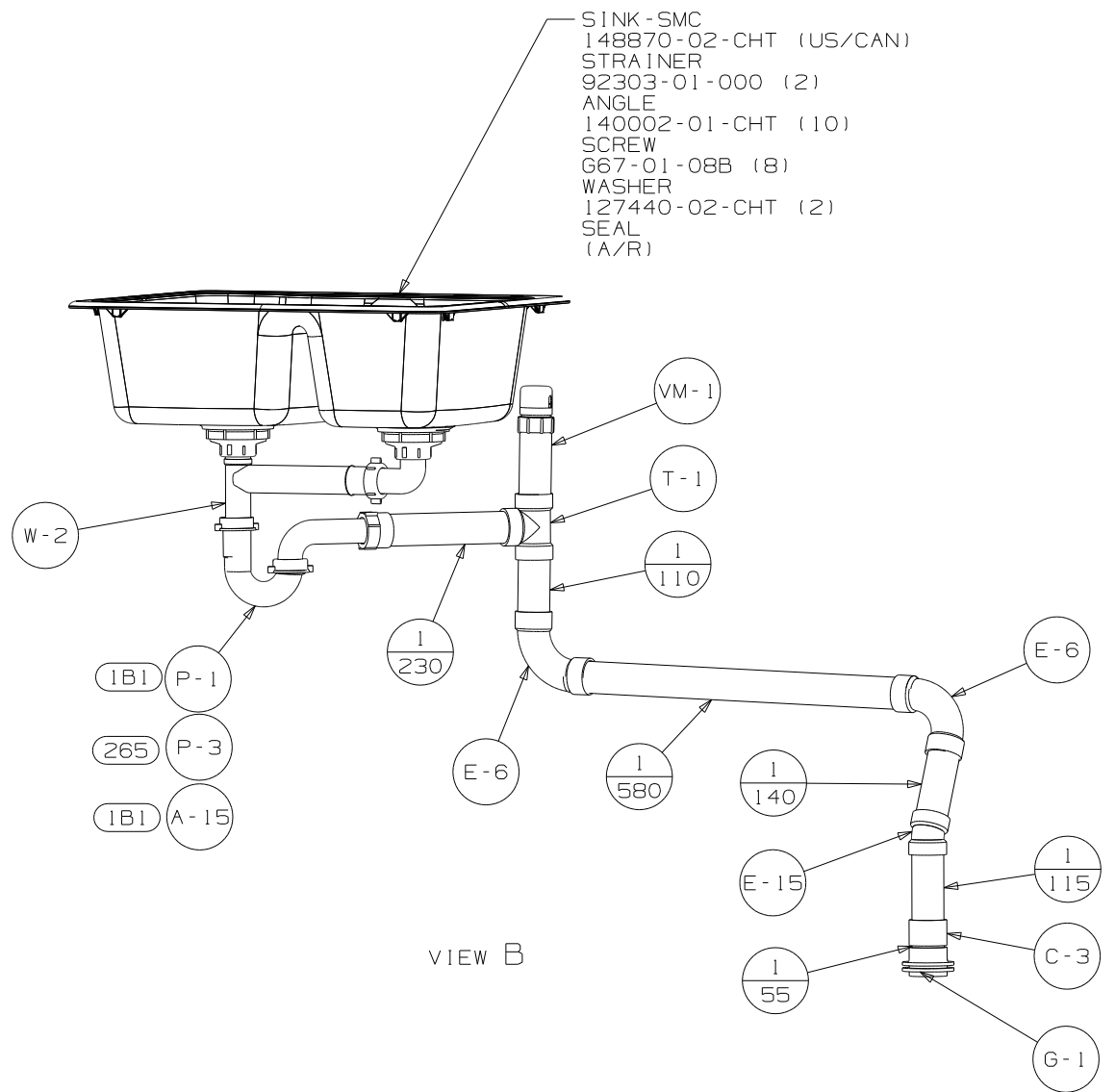
(B) CODES/STANDARDS - USA  
 (265) CODES/STDA - CSA/CMVSS

<b>WINNEBAGO</b>		COPYRIGHT 2004 WINNEBAGO INDUSTRIES, INC.	
DFTR	ORIG. DATE	ALL DIMENSIONS ARE IN MILLIMETERS	
CHKR		FIRST USED	
P.E.		05 D35N	
M.E.		UNSPECIFIED TOLERANCES ARE:	
DSNR		MATERIAL:	
		WHOLE DIM (X) :	3
		ONE-PLACE (X.X) :	
		TWO-PLACE (X.XX) :	
		ANGLE :	
THIRD ANGLE PROJECTION		DO NOT SCALE DRAWING	
TITLE: DRAINAGE SYSTEM INSTL			
SHEET 1 OF 3		PART NO 148634	

(X-X)  
 FOR  
 DRAINAGE  
 CALLOUTS  
 SEE DWG NO  
 116229-01-000

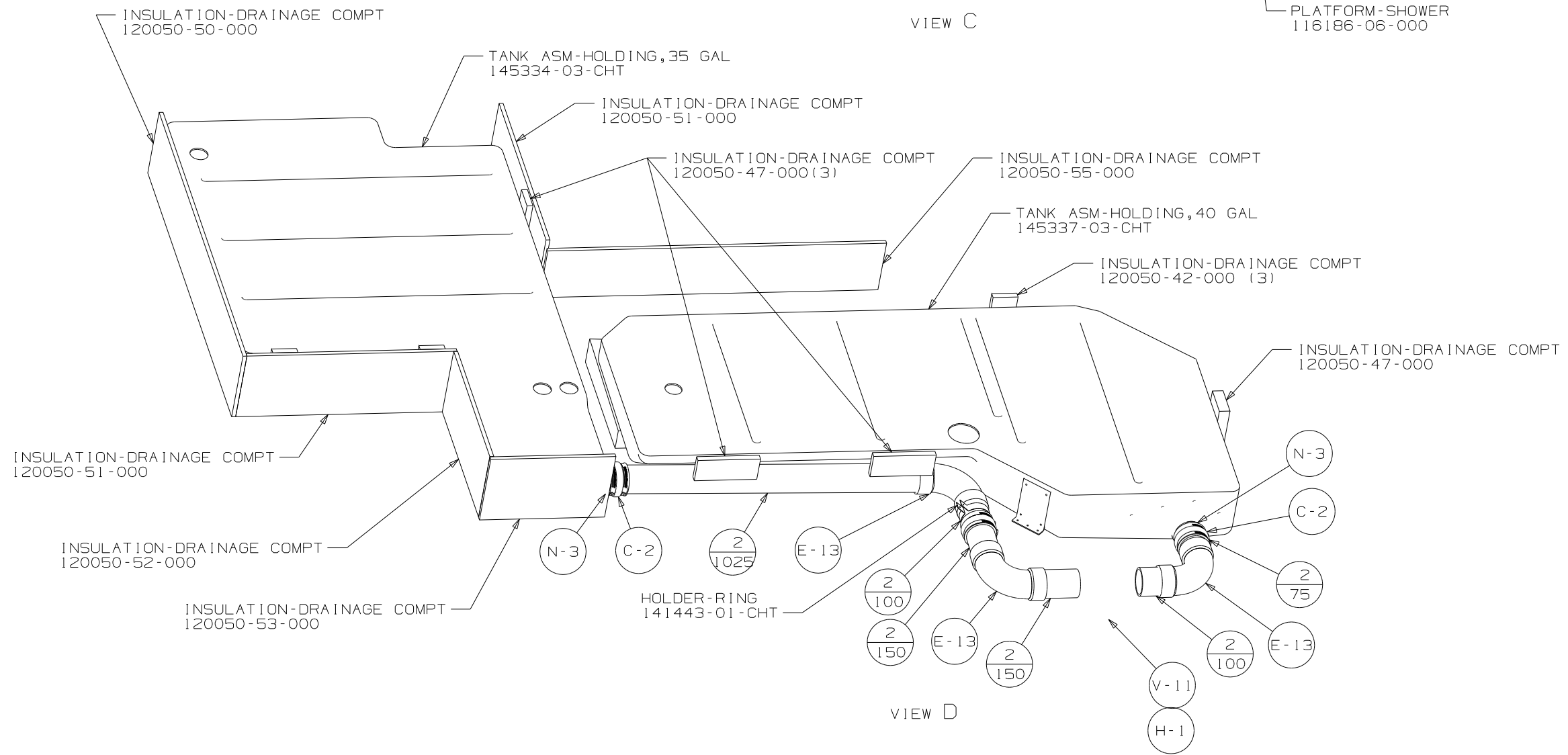
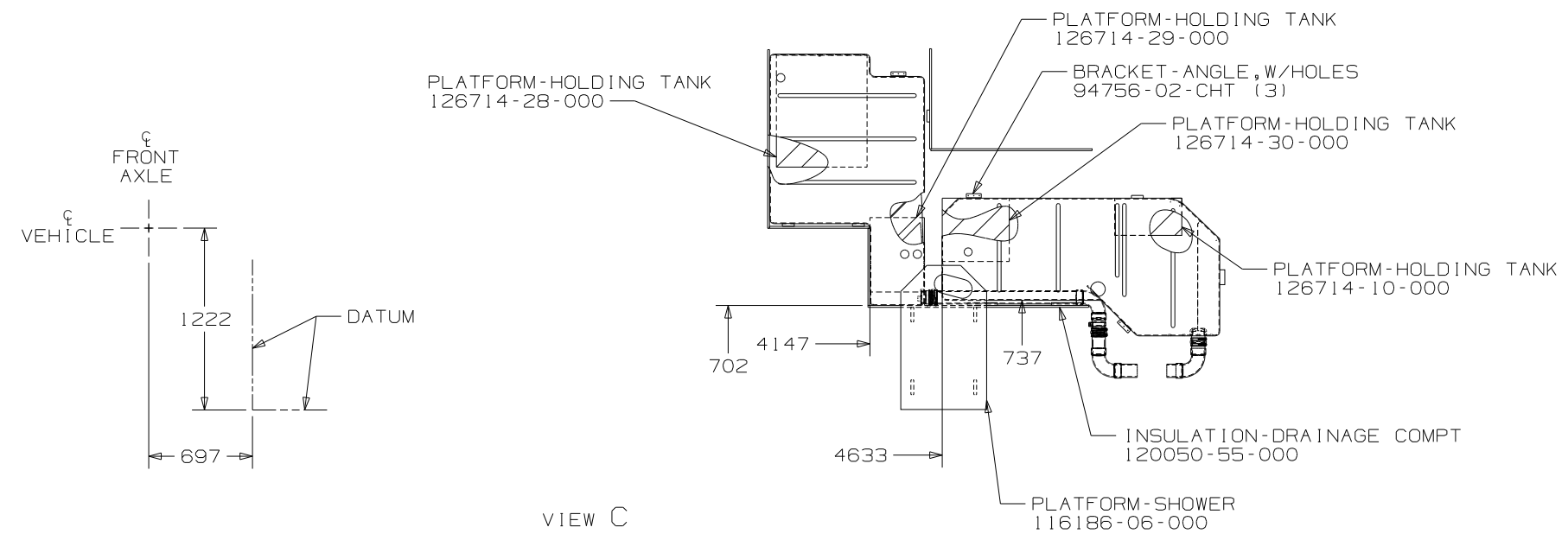


VIEW A

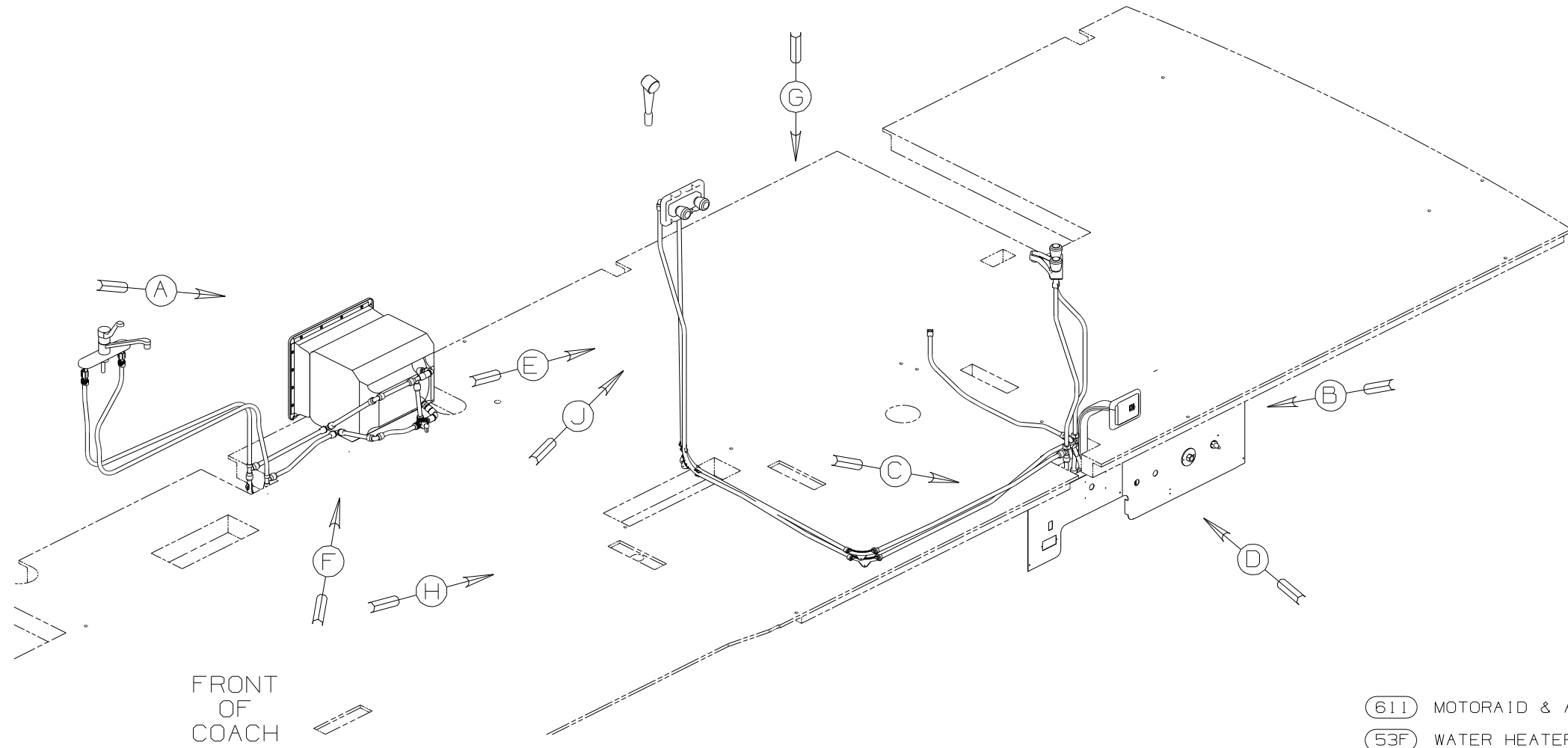


VIEW B

FIRST USED	05 D35N
DO NOT SCALE DRAWING	
TITLE	DRAINAGE SYSTEM INSTL
SHEET 2	PART NO 148634



FIRST USED	05 D35N
TITLE	DO NOT SCALE DRAWING
	DRAINAGE SYSTEM INSTL
SHEET 3	PART NO 148634
	1 9/21/2004



FRONT  
OF  
COACH

- (611) MOTORAID & AUX. HEATER
- (53F) WATER HEATER-ELEC IGNITION
- (64R) EXTERIOR WASH STATION
- (1J4) EXT WASH STATION-WITHOUT

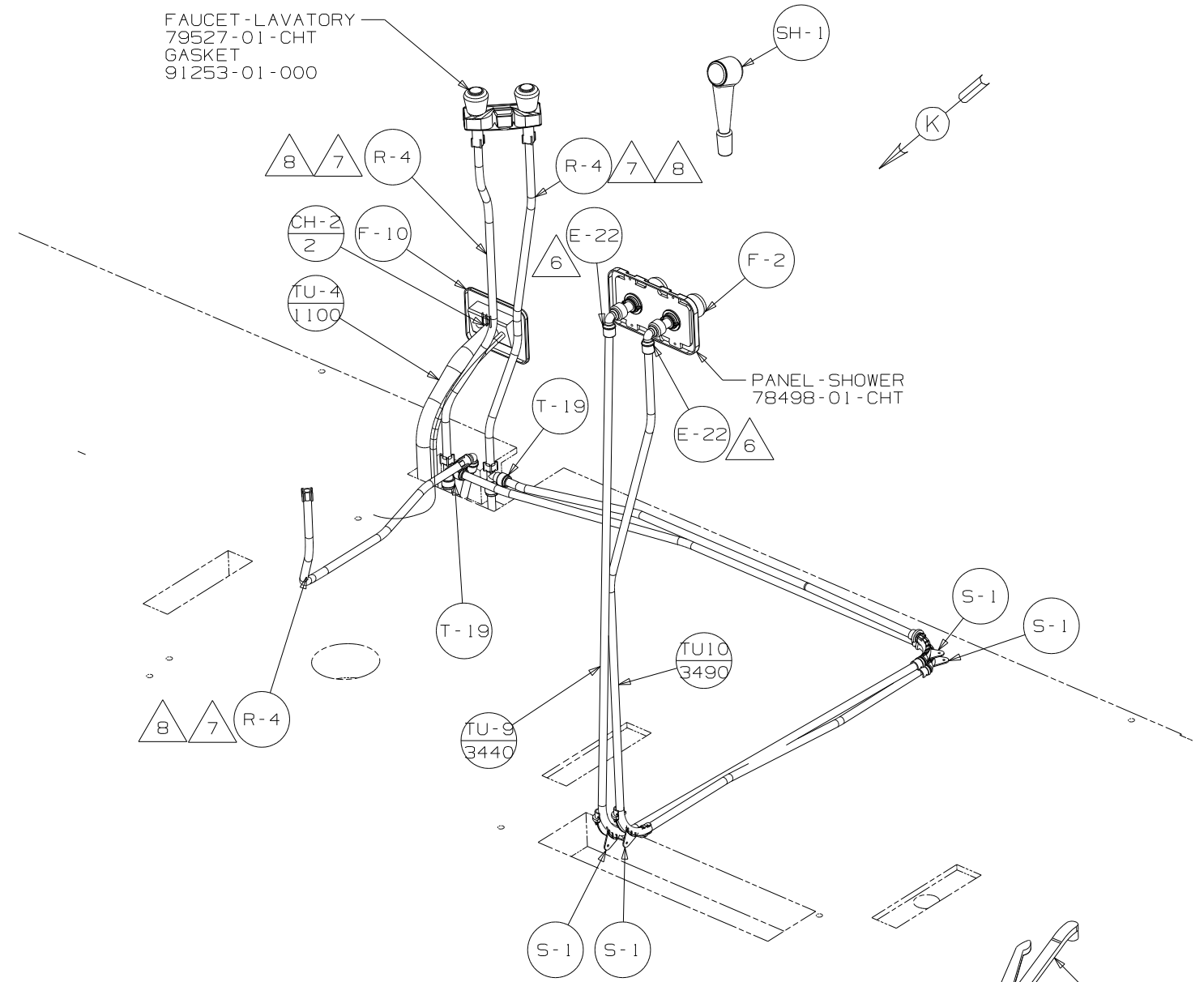
- NOTES:
- 1. PLASTIC FITTINGS TO BE SEALED WITH SEALANT 84456-01-000.
  - 2. TUBING TO BE INSTALLED WITH SUFFICIENT SLOPE TO PROVIDE DRAINAGE TO NEAREST VALVE.
  - 3. ALL TUBING TO BE SECURED AT 1200 INTERVALS MAXIMUM WITH CLAMP 10495-01-000 OR CLIP 9151-01-000 AND SCREW G67-10-12B.
  - 4. FLUSHING SYSTEM REQUIRES 125697-06-000 INSTRUCTION SHEET.
  - 5. ADD TEFLON TAPE 10405-02-000.
  - 6. ADD TEFLON TAPE 10405-01-000.
  - 7. TAPE FITTING TO TUBE BEFORE CABINET SET TO PREVENT FITTING FROM MOVING.
  - 8. LABEL HOT AND COLD SUPPLY TUBES.
  - 9. ADD TEFLON TAPE 10405-03-000.
  - 10. ADD PIPE WRAP (LADDER SCRAP) INSULATION HERE.

<b>WINNEBAGO</b>		COPYRIGHT 2005 WINNEBAGO INDUSTRIES, INC.	
DFTR	ORIG. DATE	ALL DIMENSIONS ARE IN MILLIMETERS	
CHKR		FIRST USED	
P.E.		05 D35N	
M.E.		UNSPECIFIED TOLERANCES ARE:	
DSNR		MATERIAL:	
		WHOLE DIM (X)	: 3
		ONE-PLACE (X.X)	:
		TWO-PLACE (X.XX)	:
		ANGLE	:
THIRD ANGLE PROJECTION		DO NOT SCALE DRAWING	
TITLE: WATER SYSTEM INSTL			
SHEET 1 OF 4		PART NO 148585	

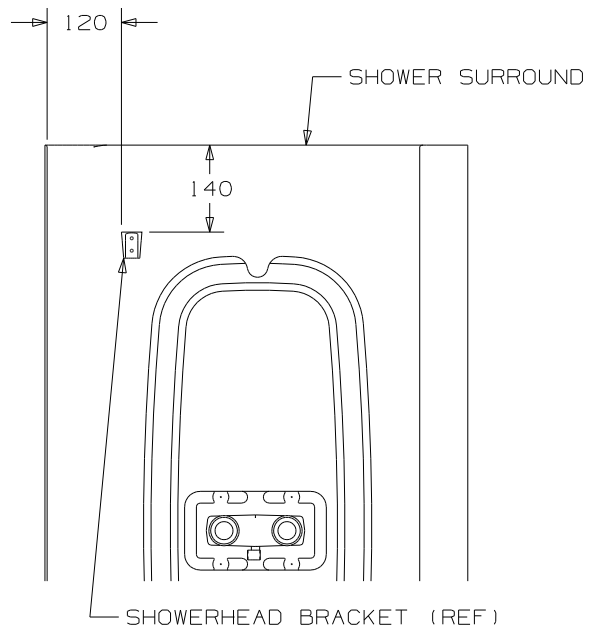
(X-X)  
FOR  
WATER  
CALLOUTS  
SEE DWG NO  
116230-01-000

FAUCET-LAVATORY  
79527-01-CHT  
GASKET  
91253-01-000

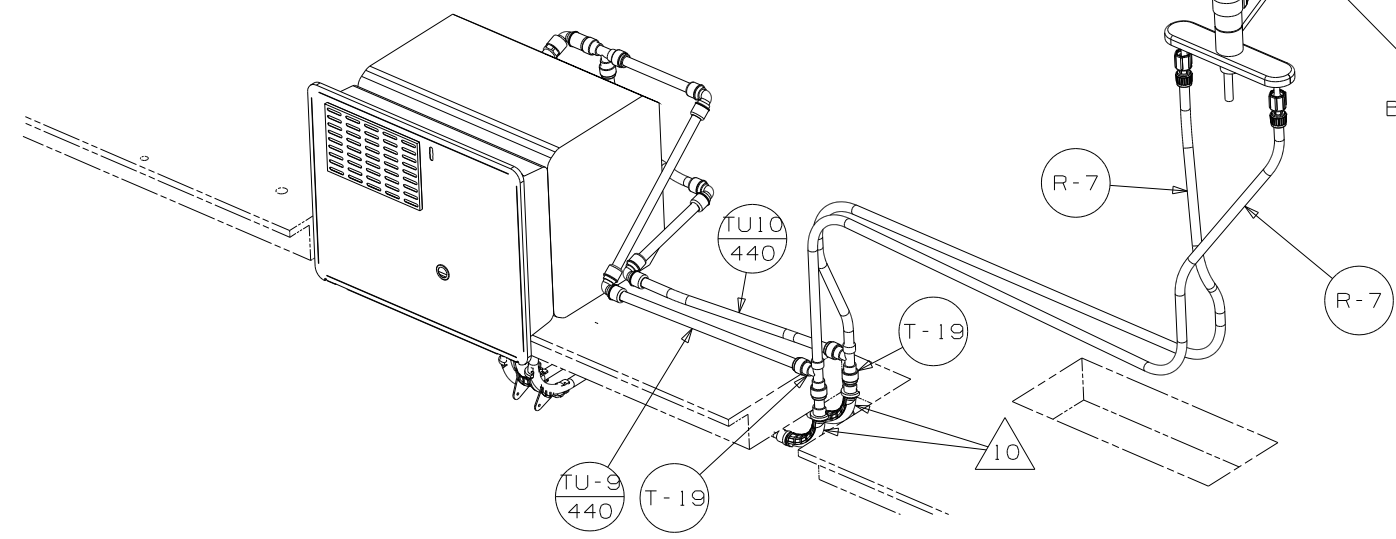
SH-1



PANEL-SHOWER  
78498-01-CHT



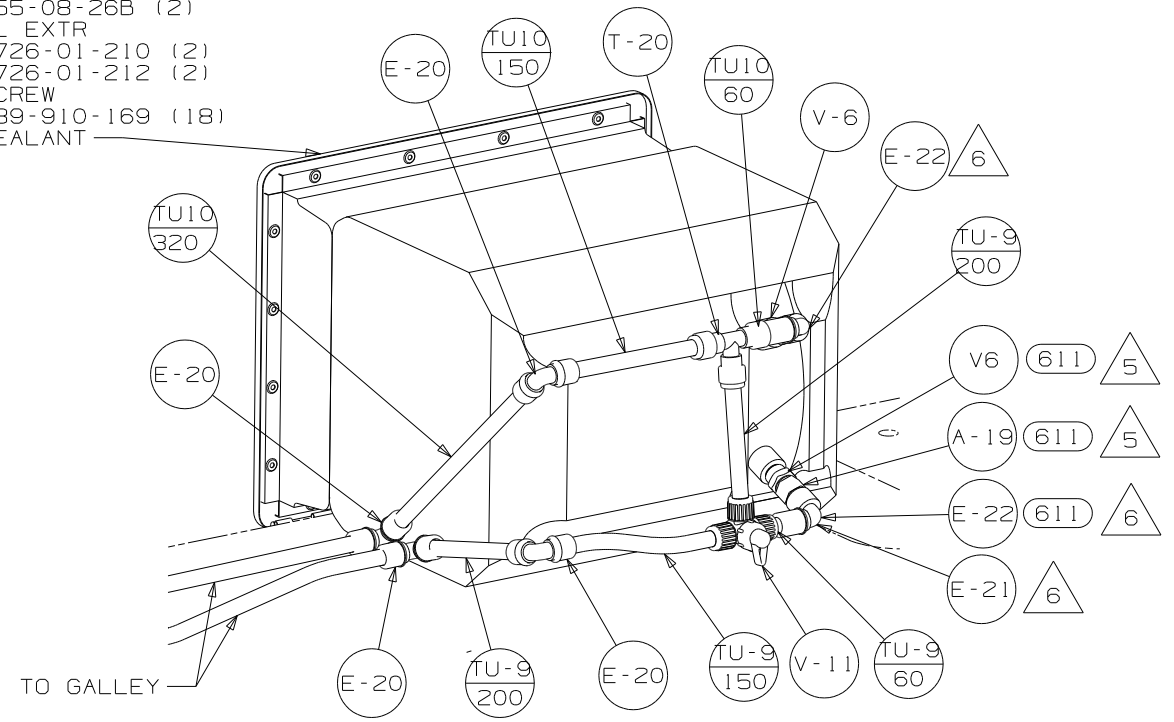
FAUCET  
149164-01-CHT  
BACKING-FAUCET  
137079-02-CHT



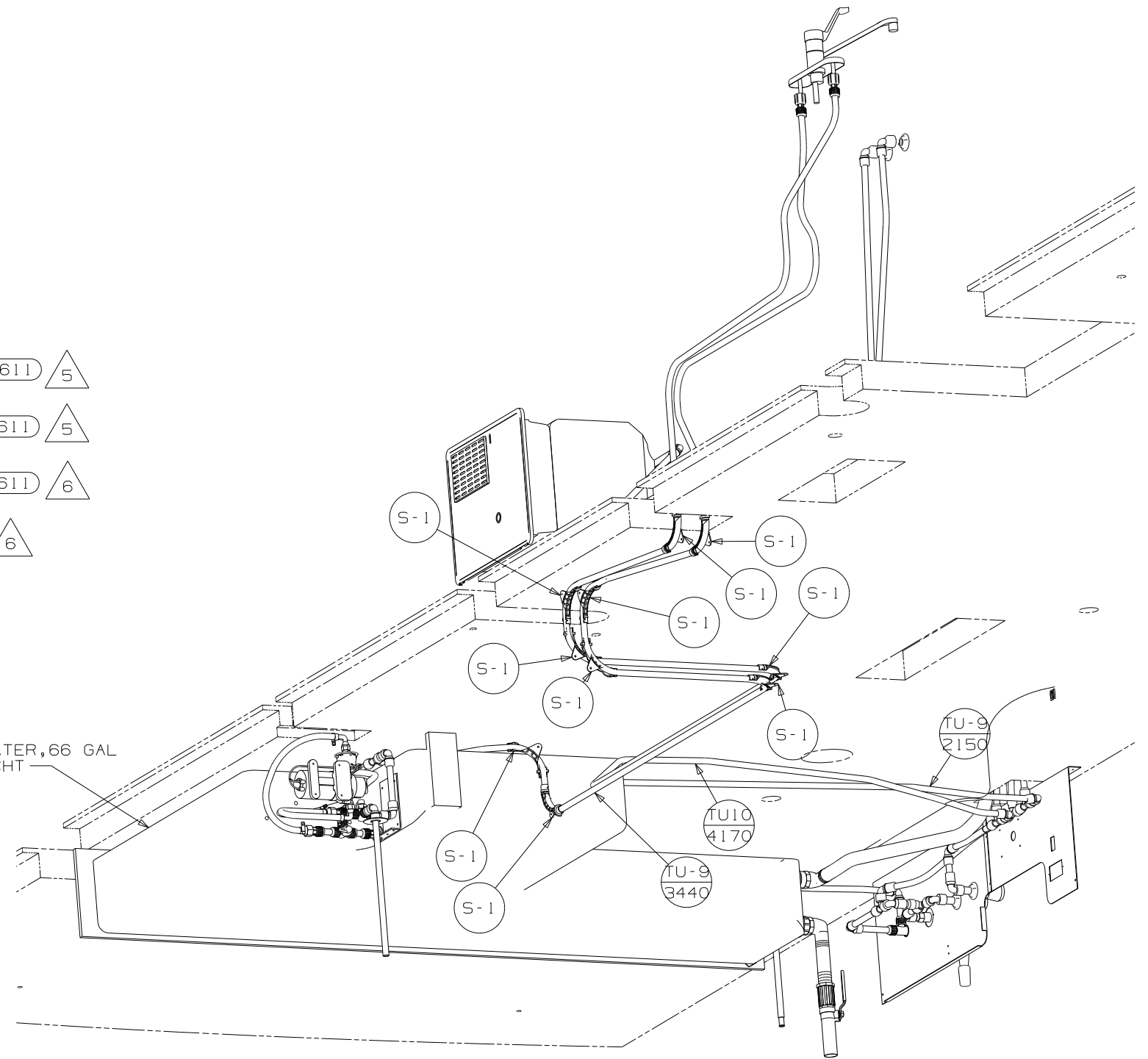
FIRST USED	05 D35N
TITLE	DO NOT SCALE DRAWING
SHEET 2	PART NO 148585



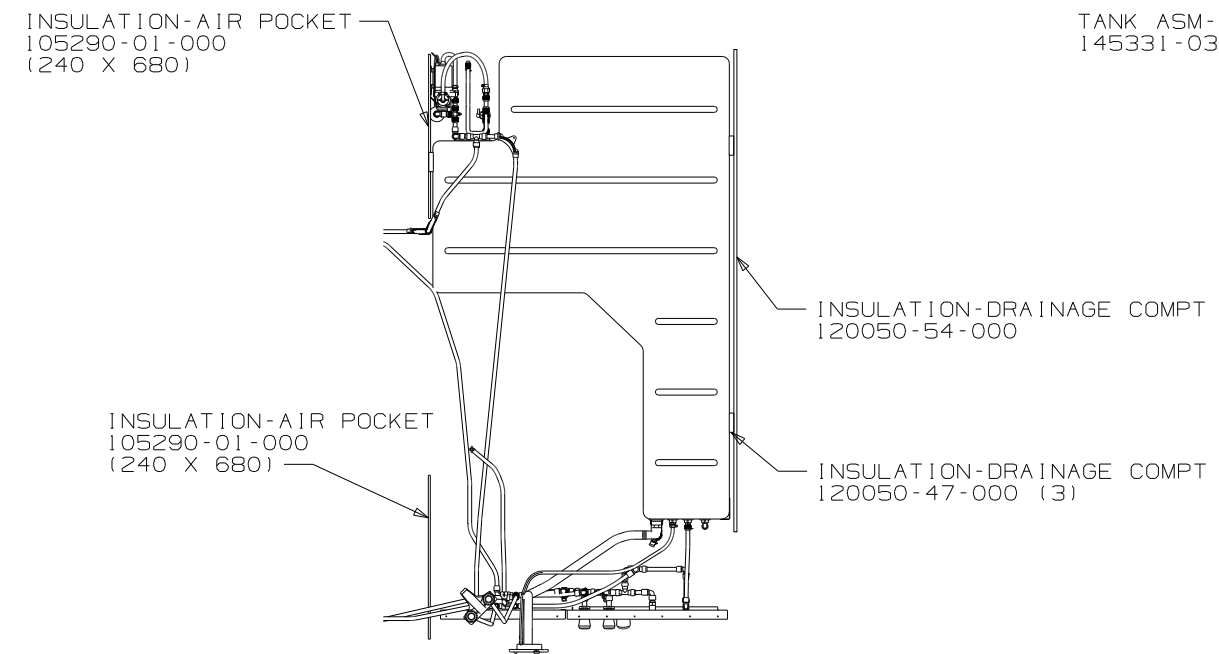
- (53F) WATER HEATER
- 51391-03-000
- (611) 51393-01-000
- DOOR
- 52009-06-000
- SCREW
- G39-10-10T (16)
- PANEL-PLATFORM
- 143657-01-000
- SCREW
- G55-08-26B (2)
- AL EXTR
- 2726-01-210 (2)
- 2726-01-212 (2)
- SCREW
- G39-910-169 (18)
- SEALANT



VIEW F



VIEW H



VIEW G

FIRST USED	05 D35N
TITLE	DO NOT SCALE DRAWING
TITLE	WATER SYSTEM INSTL
SHEET 4	PART NO 148585