



DANGER

Danger of electrical shock, burns or death. Always remove all power sources before attempting any repair, service or diagnostic work. Power can be present from shore power, generator, inverter or battery. All power sources must be disabled and secured before performing any service.



CAUTION

If you lack the skills, tools or equipment to perform diagnostic or repair work leave such work to an authorized Winnebago Industries dealer or other qualified shop.

	8	7	6	5	4	3	2	1
	G31Y	G33V	G35U	G37B	G37C	G38G	G38R	
BLK	14-UL	136131-06-036	136131-06-036	136131-06-036	136131-06-092	136131-06-036	136131-06-097	
	14-CA	136134-06-036	136134-06-036	136134-06-036	136134-06-092	136134-06-036	136134-06-097	
BLU	14-UL	136131-02-086	136131-02-086	136131-02-086	136131-02-213	136131-02-086	136131-02-175	
	14-CA	136134-02-086	136134-02-086	136134-02-086	136134-02-213	136134-02-086	136134-02-175	
BRN	14-UL	136131-03-101	136131-03-124	136131-03-130	136131-03-118	136131-03-119	136131-03-202	
	14-CA	136134-03-101	136134-03-124	136134-03-130	136134-03-118	136134-03-119	136134-03-202	
GLD	12-UL	N/A	N/A	N/A	136135-10-095	136135-10-105	136135-10-136	136135-10-106
	12-CA	N/A	N/A	N/A	136136-10-095	136136-10-105	136136-10-136	136136-10-106
GRN	12-UL	136135-08-088	136135-08-102	136135-08-092	136135-08-112	136135-08-045	136135-08-112	136135-08-045
	12-CA	136136-08-088	136136-08-102	136136-08-092	136136-08-112	136136-08-045	136136-08-112	136136-08-045
	12-UL	136135-08-106	136135-08-114	136135-08-112	136135-08-118	136135-08-070	136135-08-118	136135-08-080
	12-CA	136136-08-106	136136-08-114	136136-08-112	136136-08-118	136136-08-070	136136-08-118	136136-08-080
GRN 2	12-UL	136135-14-054	136135-14-054	136135-14-054	136135-14-054	136135-14-054	136135-14-054	136135-14-054
	12-CA	136136-14-054	136136-14-054	136136-14-054	136136-14-054	136136-14-054	136136-14-054	136136-14-054
PUR	14-UL	136131-04-155	136131-04-160	136131-04-127	136131-04-185	136131-04-064	136131-04-215	136131-04-170
	14-CA	136134-04-155	136134-04-160	136134-04-127	136134-04-185	136134-04-064	136134-04-215	136134-04-170
RED	12-UL	136135-07-106	136135-07-114	136135-07-112	136135-07-118	136135-07-070	136135-07-118	136135-07-080
	12-CA	136136-07-106	136136-07-114	136136-07-112	136136-07-118	136136-07-070	136136-07-118	136136-07-080
WHT	12-UL	136135-09-090	136135-09-080	136135-09-082	136135-09-100	136135-09-142	136135-09-100	136135-09-144
	12-CA	136136-09-090	136136-09-080	136136-09-082	136136-09-100	136136-09-142	136136-09-100	136136-09-144
YEL	14-UL	136131-05-036	136131-05-036	136131-05-036	136131-05-036	136131-05-103	136131-05-036	136131-05-100
	14-CA	136134-05-036	136134-05-036	136134-05-036	136134-05-036	136134-05-103	136134-05-036	136134-05-100
YEL 2	14-UL	136131-13-050	136131-13-050	136131-13-050	136131-13-050	136131-13-108	136131-13-050	136131-13-100
	14-CA	136134-13-050	136134-13-050	136134-13-050	136134-13-050	136134-13-108	136134-13-050	136134-13-100
MAIN	10-UL	136137-01-088	136137-01-102	136137-01-092	136137-01-112	136137-01-045	136137-01-112	136137-01-045
	10-CA	136138-01-088	136138-01-102	136138-01-092	136138-01-112	136138-01-045	136138-01-112	136138-01-045
	6-3 UL	136139-01-088	136139-01-102	136139-01-092	136139-01-112	136139-01-045	136139-01-112	136139-01-045
	6-3 CA	136140-01-088	136140-01-102	136140-01-092	136140-01-112	136140-01-045	136140-01-112	136140-01-045
MAIN GROUND		136145-01-036	136145-01-036	136145-01-036	136145-01-036	136145-01-095	136145-01-036	136145-01-100
ATS GROUND		136145-01-058	136145-01-061	136145-01-066	136145-01-080	136145-01-069	136145-01-080	136145-01-076

RELEASE REV DATE A 1 44657
 REV ZONE REVISION RECORD DATE DFR-ORIG

21M 54E
 21M 54E

12D
 12D
 78J
 78J
 12D
 12D

12D
 12D
 78J
 78J

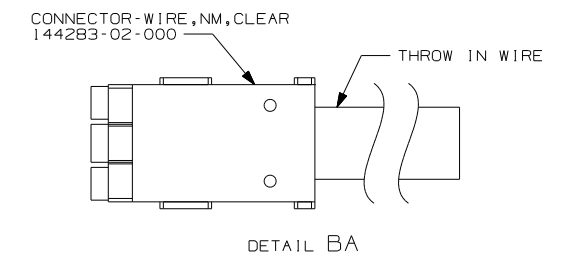
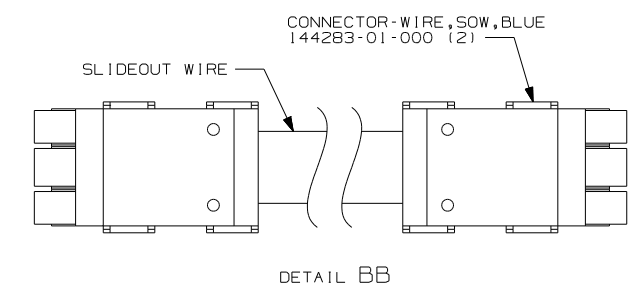
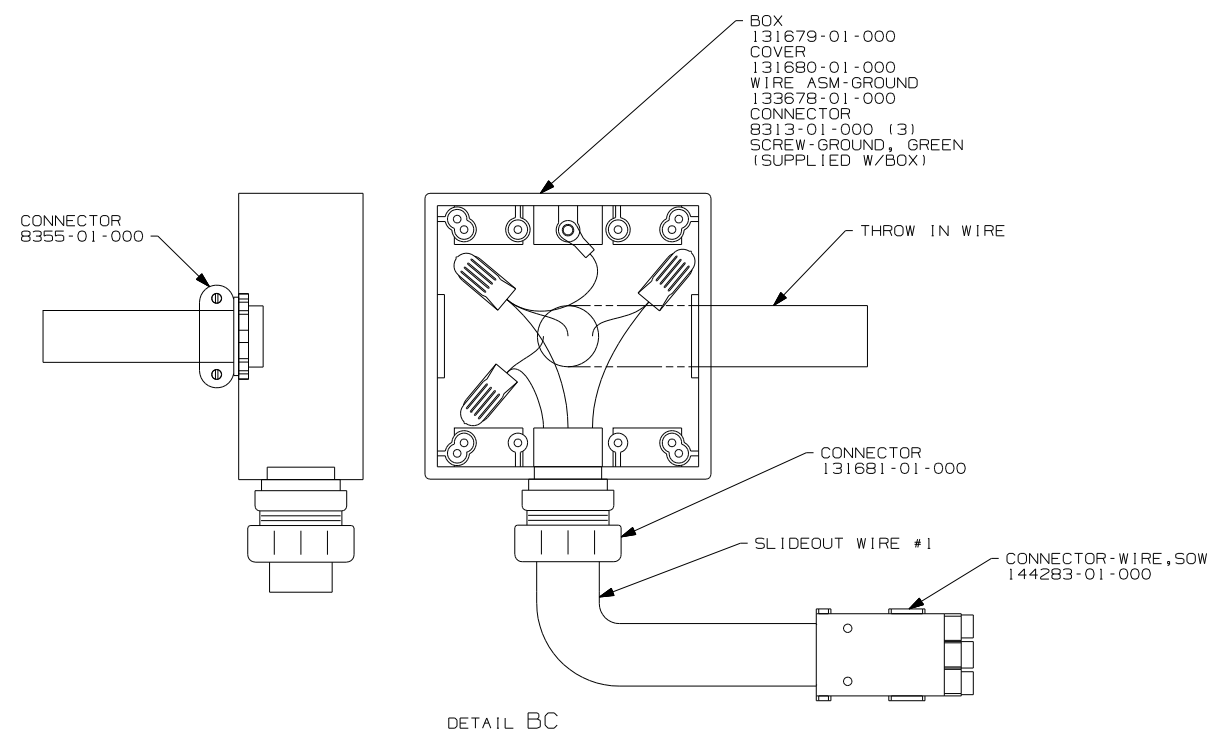
- 78J ELECTRICAL SYSTEM - 50 AMP
- 54E WASHER/DRYER
- 265 CODES/STANDARDS - CSA/CMVSS
- 21M WASHER/DRYER - PREP
- 1B1 CODES/STANDARDS - USA
- 12D ELECTRICAL SYSTEM - 30 AMP

1B1 265

WINNEBAGO COPYRIGHT 2004 WINNEBAGO INDUSTRIES, INC.

DFTR	ORIG. DATE
CHKR	ALL DIMENSIONS ARE IN MILLIMETERS
P.E.	
M.E.	FIRST USED
DSNR	04 G-SERIES
UNSPECIFIED TOLERANCES ARE:	MATERIAL:
HOLE DIM (X)	:
ONE-PLACE (X.X)	:
TWO-PLACE (X.XX)	:
ANGLE	:
THIRD ANGLE PROJECTION	
DO NOT SCALE DRAWING	
TITLE: LOAD CENTER/ATS ASM	
SHEET 1 OF 4	PART NO 144657

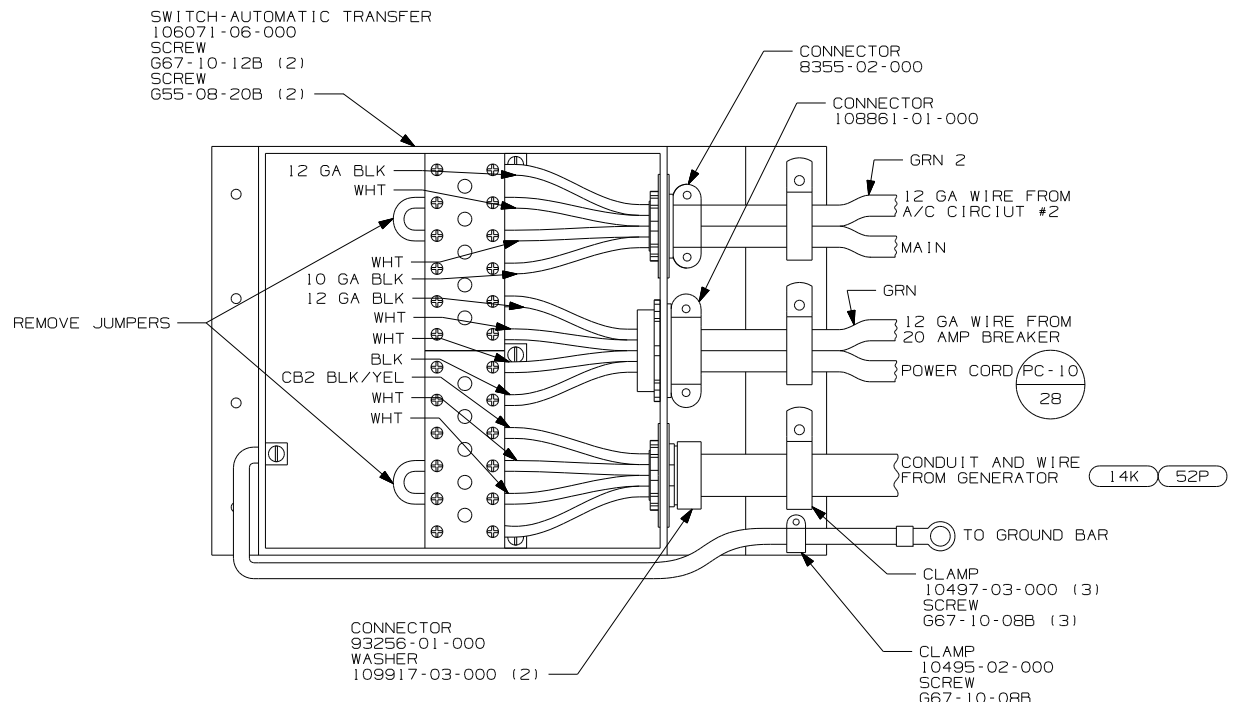
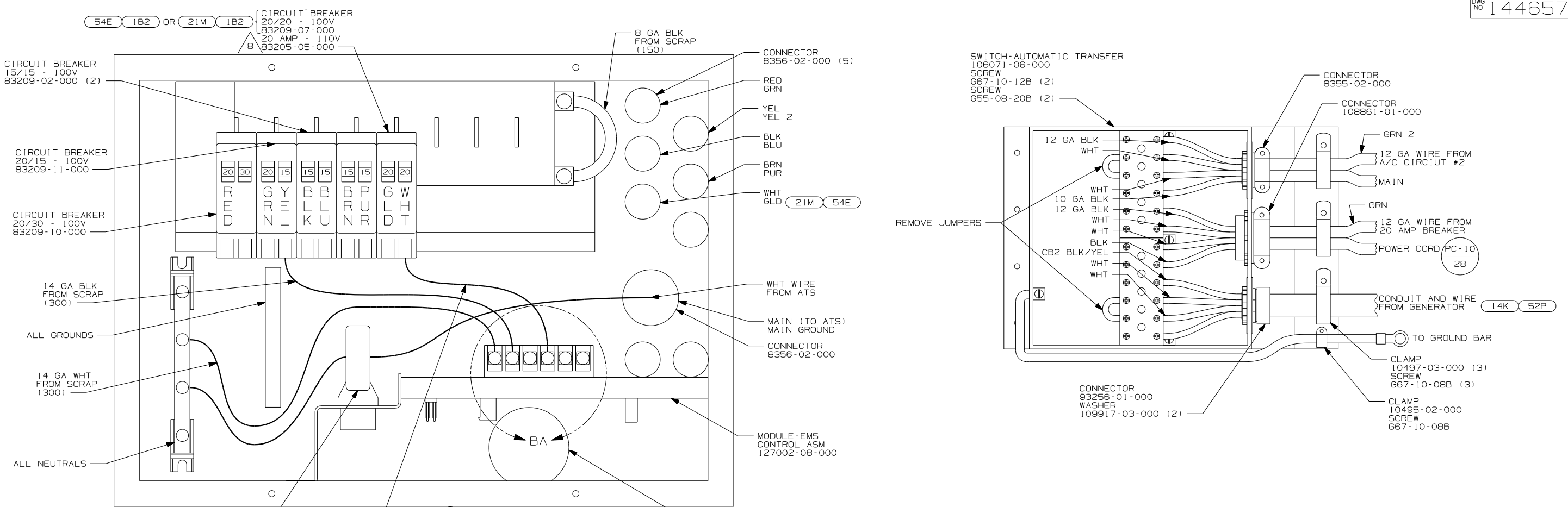
	8	7	6	5	4	3	2	1
		G31Y	G33V	G35U	G37B	G37C	G38G	G38R
THROW IN WIRE #1	14-UL 136131-03-070 ³	136131-03-045 ³	136131-03-065 ³	136131-03-050 ³	136131-03-056 ¹	136131-03-060 ³	136131-03-045 ¹	
	14-CA 136134-03-070 ³	136134-03-045 ³	136134-03-065 ³	136134-03-050 ³	136134-03-056 ¹	136134-03-060 ³	136134-03-045 ¹	
THROW IN WIRE #2	14-UL 136131-04-032 ¹ (49M)	136131-04-032 ¹ (49M)	136131-04-088 ¹	136131-04-032 ¹ (49M)	136131-04-088 ¹	136131-04-088 ¹	136131-02-088 ¹	
	14-CA 136134-04-032 ¹ (49M)	136134-04-032 ¹ (49M)	136134-04-088 ¹	136134-04-032 ¹ (49M)	136134-04-088 ¹	136134-04-088 ¹	136134-02-088 ¹	
THROW IN WIRE #3	14-UL N/A	N/A	N/A	136131-12-085 ¹	N/A	N/A	136131-12-035	
	14-CA N/A	N/A	N/A	136134-12-085 ¹	N/A	N/A	136134-12-035	
THROW IN WIRE #4	14-UL N/A	N/A	N/A	136131-12-020 ¹	N/A	N/A	136131-02-006 ¹	
	14-CA N/A	N/A	N/A	136134-12-020 ¹	N/A	N/A	136134-02-006 ¹	
THROW IN WIRE #5	14-UL N/A	N/A	N/A	136131-03-115	N/A	N/A	136131-03-040 ¹	
	14-CA N/A	N/A	N/A	136134-03-115	N/A	N/A	136134-03-040 ¹	
SLIDEOUT WIRE #1		136151-03-026 ³	136151-03-026 ³	136151-03-026 ³	136151-03-026 ³	136151-03-055 ²	136151-03-026 ³	136151-03-030 ²
SLIDEOUT WIRE #2		136151-04-017 ²	136151-04-017 ²	136151-04-017 ²	136151-04-017 ²	136151-04-017 ²	136151-04-017 ²	136151-02-017 ²
SLIDEOUT WIRE #3		N/A	N/A	N/A	136151-12-019 ²	136151-06-055 ²	N/A	136151-06-030 ²



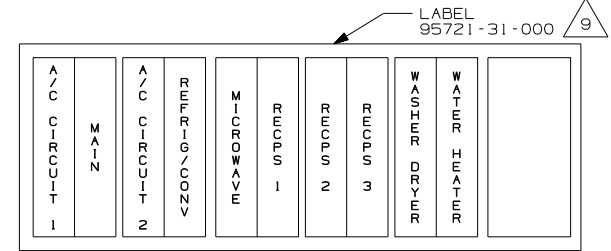
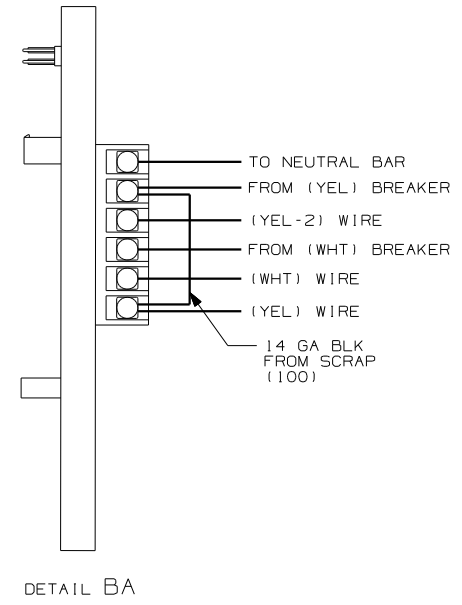
- NOTES:
- ³ SEE DETAIL BC.
 - ² SEE DETAIL BB.
 - ¹ SEE DETAIL BA.

- (78J) ELECTRICAL SYSTEM - 50 AMP
- (49M) SLEEP NUMBER BED-QUEEN SIZE
- (265) CODES/STANDARDS - CSA/CMVSS
- (1B1) CODES/STANDARDS - USA
- (12D) ELECTRICAL SYSTEM - 30 AMP

(12D) (1B1) (265) (78J)	
FIRST USED 04 G-SERIES	
DO NOT SCALE DRAWING	
TITLE: LOAD CENTER/ATS ASM	
SHEET 2	PART NO 144657



LOAD CENTER - 120/240, 100A
 141258-01-000 COVER
 141258-02-000 (9)
 SCREW
 667-10-12B (4)
 (SHOWN WITH COVER REMOVED)



INSTALL LABEL ON FRONT COVER PLATE BELOW THE BREAKERS

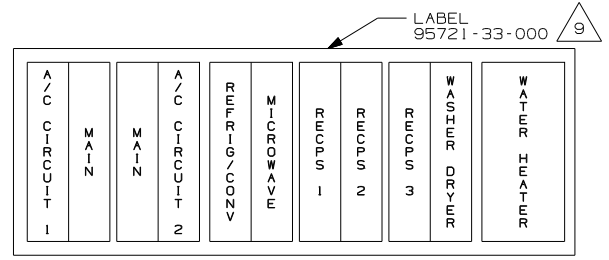
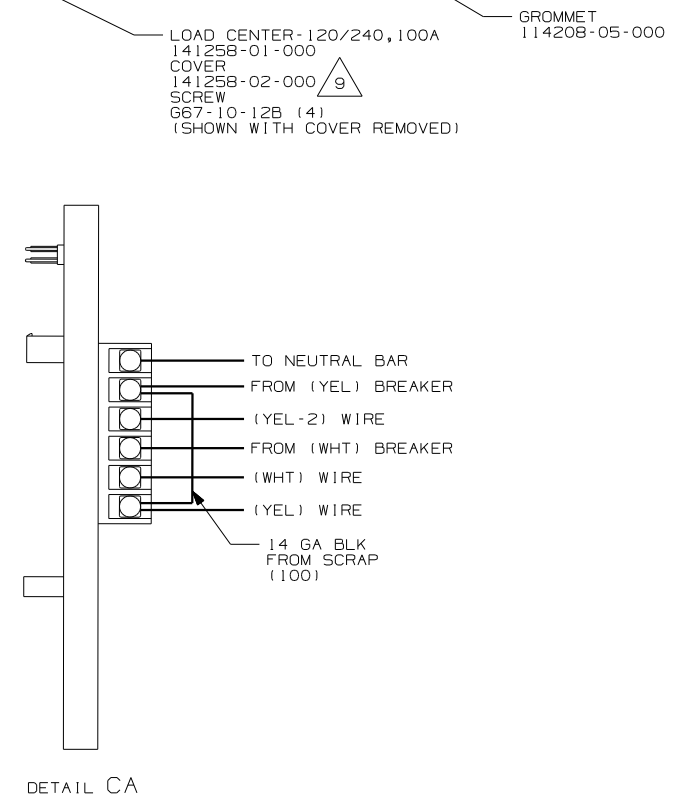
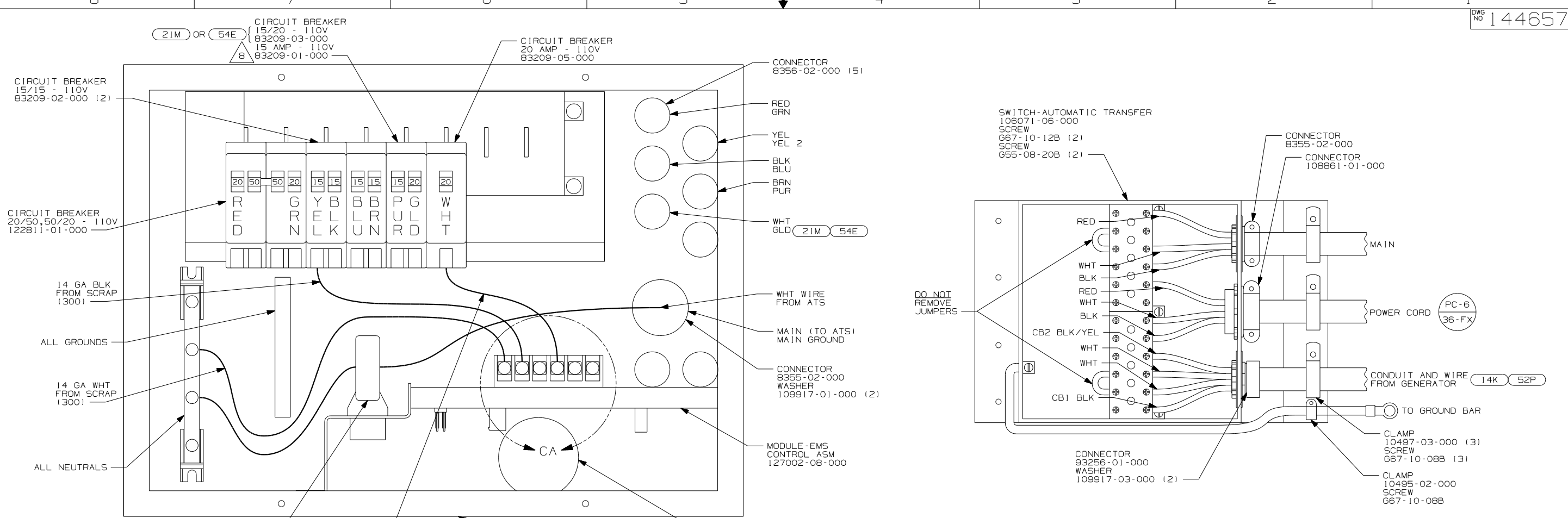
- 9 INSTALLED BY ASSEMBLY LINE
 8 WITHOUT (21M) OR (54E).
- ALL WIRES MUST BE 500MM LONG INSIDE BOX.
 - WIRE TIE THE FOLLOWING WIRES FOR THE FIRST 1600MM; RED, GREEN, PURPLE, BROWN, 10/2, BLACK, YELLOW, YELLOW-2, AND WHITE, LEAVE THE BLUE WIRE OUT OF THE WIRE TIES.
 - ATTACH WIRES TO BACKSIDE OF LOAD CENTER, USE EXISTING HOLES AND TIE-WIRE 116673-01-000.
 - ALL 110V STRANDED WIRE W/O TERMINALS TO BE STRIPPED 10MM AND SOLDER DIPPED.
 - ALL WIRES TO BE CLAMPED WITHIN 200MM OF ATS.
 - GROUND WIRES ARE NOT SHOWN FOR CLARITY.
 - ALL GROUND WIRES TO BE COVERED WITH TUBING 8041-02-000.

- (54E) WASHER/DRYER
- (52P) GEN-5.5KW ONAN-GAS-MARQ GOLD
- (265) CODES/STANDARDS - CSA/CMVSS
- (21M) WASHER/DRYER - PREP
- (1B1) CODES/STANDARDS - USA
- (14K) GEN-7.0KW ONAN-GAS-MARQ GOLD
- (12D) ELECTRICAL SYSTEM - 30 AMP

(X-X) FOR ELECTRICAL CALLOUTS SEE DWG NO. 121339-01-000

FOR ELECTRICAL TORQUE SPECIFICATIONS SEE DWG NO. 128783-01-000

FIRST USED	
04 G-SERIES	
DO NOT SCALE DRAWING	
TITLE: LOAD CENTER/ATS ASM	
SHEET 3	PART NO 144657



INSTALL LABEL ON FRONT COVER PLATE BELOW THE BREAKERS

- (9) INSTALLED BY ASSEMBLY LINE
- (8) WITHOUT (21M) OR (54E).
- ALL WIRES MUST BE 500MM LONG INSIDE BOX.
 - WIRE TIE THE FOLLOWING WIRES FOR THE FIRST 1600MM; RED, GREEN, PURPLE, BROWN, 10/2, BLACK, YELLOW, YELLOW 2, AND WHITE, LEAVE THE BLUE WIRE OUT OF THE WIRE TIES.
 - ATTACH WIRES TO BACKSIDE OF LOAD CENTER, USE EXISTING HOLES AND TIE-WIRE 116673-01-000.
 - ALL 110V STRANDED WIRE W/O TERMINALS TO BE STRIPED 10MM AND SOLDER DIPPED.
 - ALL WIRES TO BE CLAMPED WITHIN 200MM OF ATS.
 - GROUND WIRES ARE NOT SHOWN FOR CLARITY.
 - ALL GROUND WIRES TO BE COVERED WITH TUBING 8041-02-000.
- NOTES:**

- (78J) ELECTRICAL SYSTEM - 50 AMP
- (54E) WASHER/DRYER
- (52P) GEN-5.5KW ONAN-GAS-MARO GOLD
- (265) CODES/STANDARDS - CSA/CMVSS
- (21M) WASHER/DRYER - PREP
- (1B1) CODES/STANDARDS - USA
- (14K) GEN-7.0KW ONAN-GAS-MARO GOLD

FOR ELECTRICAL TORQUE SPECIFICATIONS SEE DWG NO. 128783-01-000

FOR ELECTRICAL CALLOUTS SEE DWG NO. 121339-01-000

(78J) (1B1) (265)

FIRST USED
04 G-SERIES

TITLE:
DO NOT SCALE DRAWING
LOAD CENTER/ATS ASM

SHEET 4 **PART NO** 144657