



DANGER

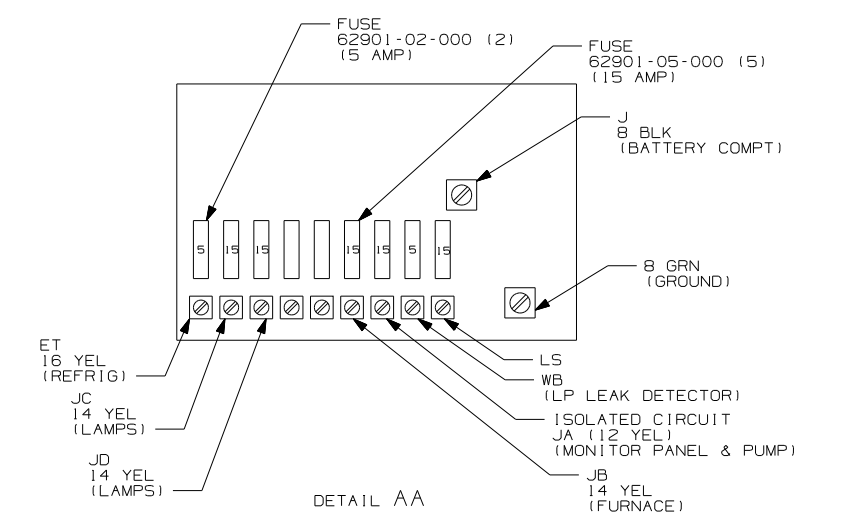
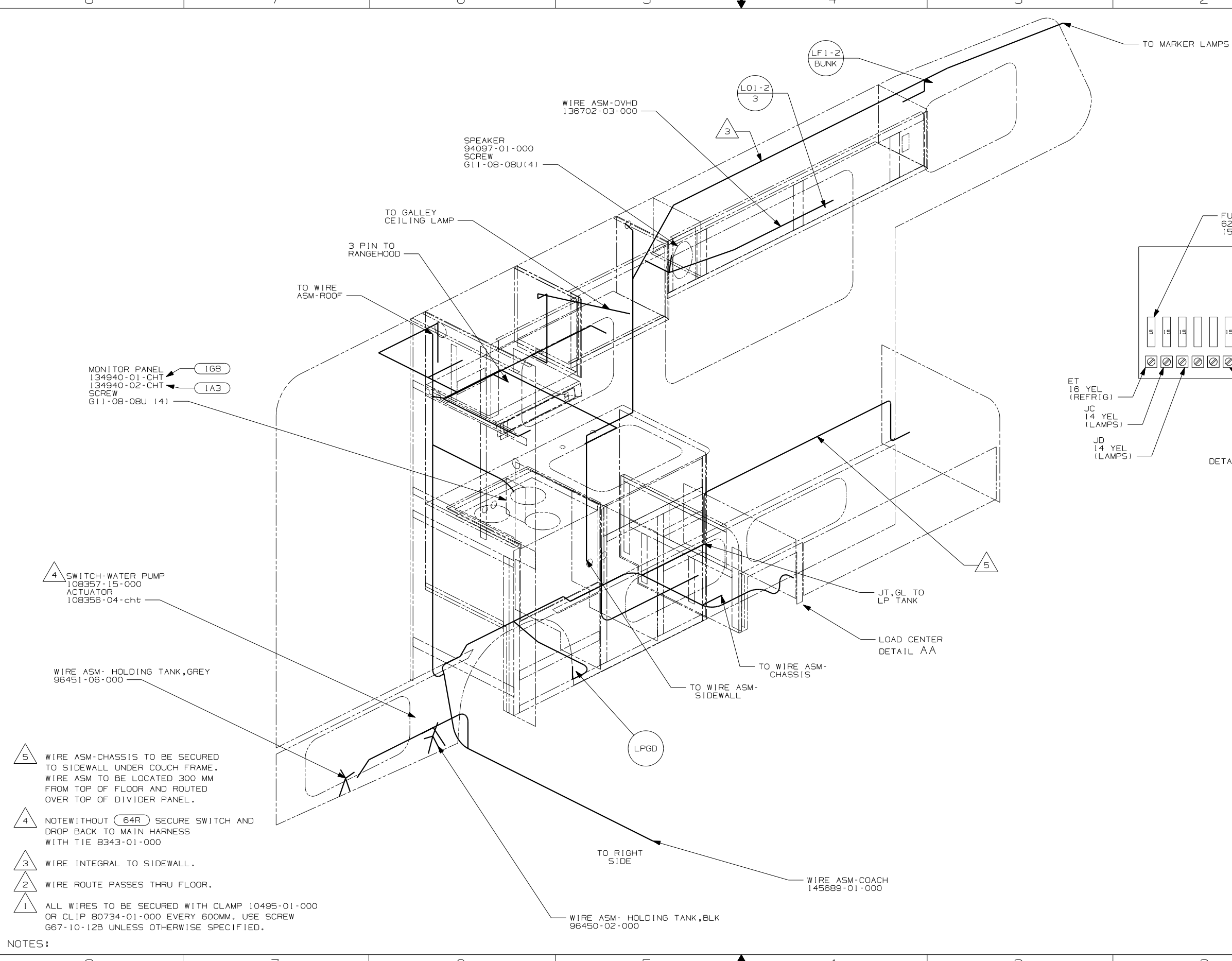
Danger of electrical shock, burns or death. Always remove all power sources before attempting any repair, service or diagnostic work. Power can be present from shore power, generator, inverter or battery. All power sources must be disabled and secured before performing any service.



CAUTION

If you lack the skills, tools or equipment to perform diagnostic or repair work leave such work to an authorized Winnebago Industries dealer or other qualified shop.

RELEASE	REV/DATE	DRG NO	145686
REV ZONE	REVISION RECORD	DATE	DFTR-ORIG
B	S1 AS	REPLACE LP DETECTOR CALLOUT WITH NEW BALLOON CALLOUT	12/17/03 1612-3728



- (64R) EXTERIOR WASH STATION
 - (1A3) GENERATOR WITHOUT
 - (1G8) GEN-2.8KW ONAN MICROLITE
 - (265) CODES/STANDARDS-CSA/CMVSS
 - (1B1) CODES/STANDARDS-USA
- (1B1) (265)

WINNEBAGO COPYRIGHT 2004 WINNEBAGO INDUSTRIES, INC.

DFTR	ORIG. DATE
CHKR	ALL DIMENSIONS ARE IN MILLIMETERS
P.E.	FIRST USED
M.E.	04 221B
DSNR	

UNSPECIFIED TOLERANCES ARE: MATERIAL:

WHOLE DIM (X) :
ONE-PLACE (X.X) :
TWO-PLACE (X.XX) :
ANGLE :

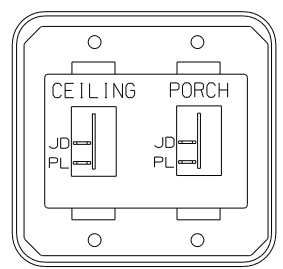
THIRD ANGLE PROJECTION

DO NOT SCALE DRAWING

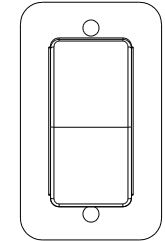
TITLE: WIRING INSTL-BODY, 12V

SHEET 1 of 4 PART NO 145686

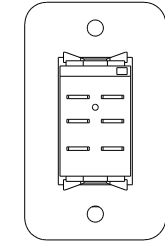
- NOTES:
- 5 WIRE ASM-CHASSIS TO BE SECURED TO SIDEWALL UNDER COUCH FRAME. WIRE ASM TO BE LOCATED 300 MM FROM TOP OF FLOOR AND ROUTED OVER TOP OF DIVIDER PANEL.
 - 4 NOTE: WITHOUT (64R) SECURE SWITCH AND DROP BACK TO MAIN HARNESS WITH TIE 8343-01-000
 - 3 WIRE INTEGRAL TO SIDEWALL.
 - 2 WIRE ROUTE PASSES THRU FLOOR.
 - 1 ALL WIRES TO BE SECURED WITH CLAMP 10495-01-000 OR CLIP 80734-01-000 EVERY 600MM. USE SCREW 667-10-12B UNLESS OTHERWISE SPECIFIED.



SWITCH-ROCKER
135740-01-CHT (2)
SWITCH-BASE
135741-02-CHT
SWITCH-BEZEL
135742-19-CHT
SCREW
G11-08-08U (4)

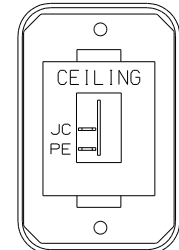


DETAIL BC
(FRONT SIDE)



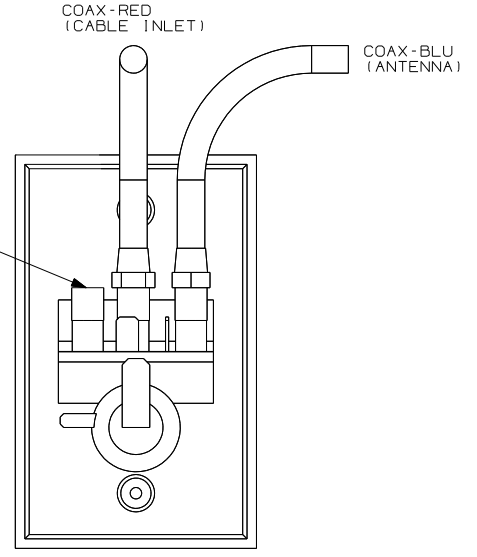
DETAIL BC
(BACK SIDE)

SWITCH-BATTERY, DISC
108357-06-000
ACTUATOR-SWITCH
108356-11-CHT
PLATE-SWITCH
98351-07-CHT
SCREW
G11-06-10U (2)

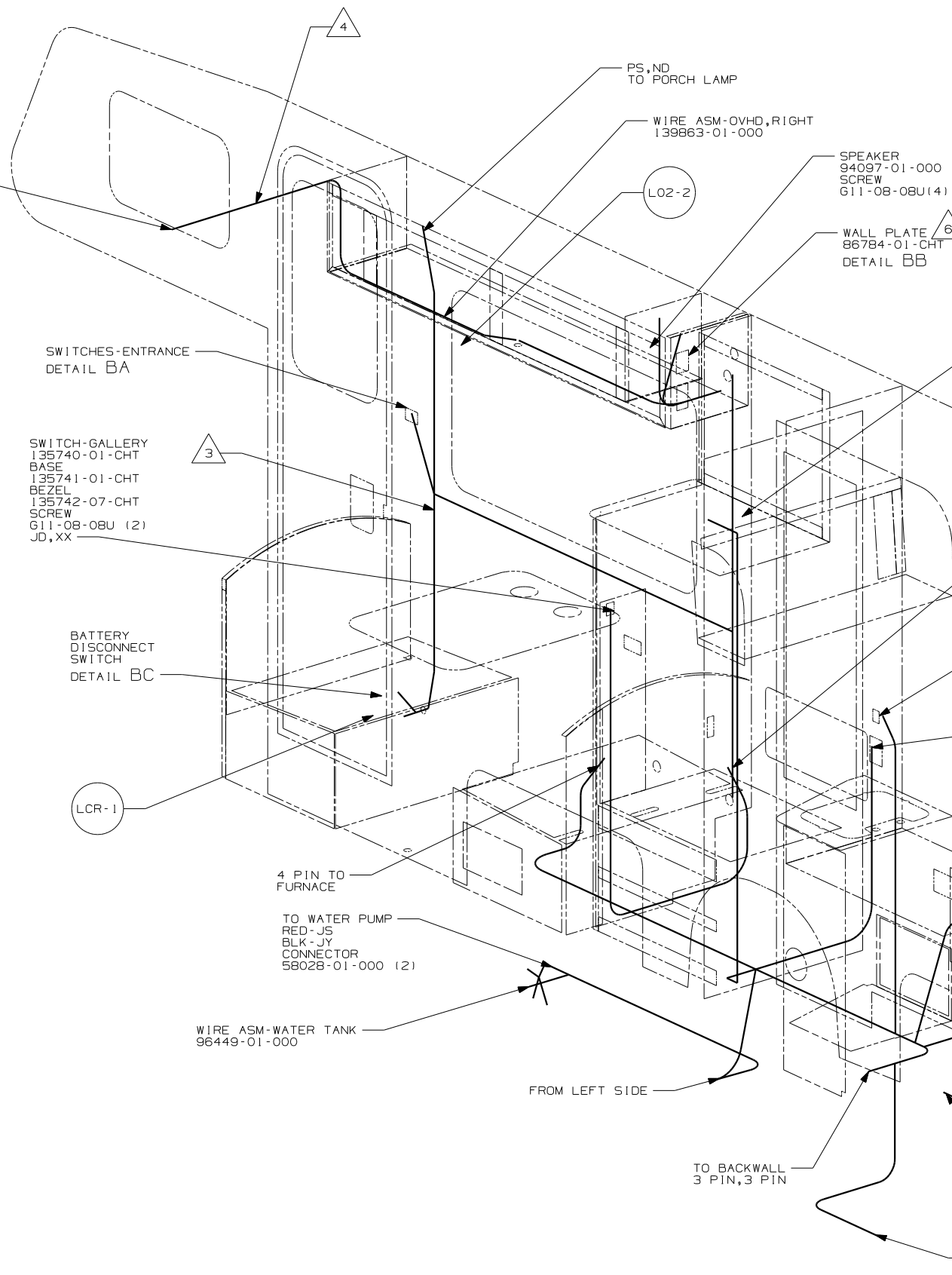


DETAIL BD

SWITCH-ROCKER
135740-01-CHT
SWITCH-BASE
135741-01-CHT
SWITCH-BEZEL
135742-07-CHT
SCREW
G11-08-08U (2)



DETAIL BB



TO LOUNGE
CEILING LAMP

PS, ND
TO PORCH LAMP

WIRE ASM-OVHD, RIGHT
139863-01-000

SPEAKER
94097-01-000
SCREW
G11-08-08U (4)

WALL PLATE
86784-01-CHT
DETAIL BB

THERMOSTAT
115764-01-CHT

SWITCHES-ENTRANCE
DETAIL BA

SWITCH-GALLERY
135740-01-CHT
BASE
135741-01-CHT
BEZEL
135742-07-CHT
SCREW
G11-08-08U (2)
JD, XX

BATTERY
DISCONNECT
SWITCH
DETAIL BC

6 PIN TO
SIDEWALL

SWITCH-BATH
DETAIL BD

ET, EU
TO REFRIG

3 PIN TO
WATER HEATER

4 PIN TO
FURNACE

TO WATER PUMP
RED- JS
BLK- JY
CONNECTOR
58028-01-000 (2)

WIRE ASM-WATER TANK
96449-01-000

FROM LEFT SIDE

TO BACKWALL
3 PIN, 3 PIN

8 PIN
TO GEN SET

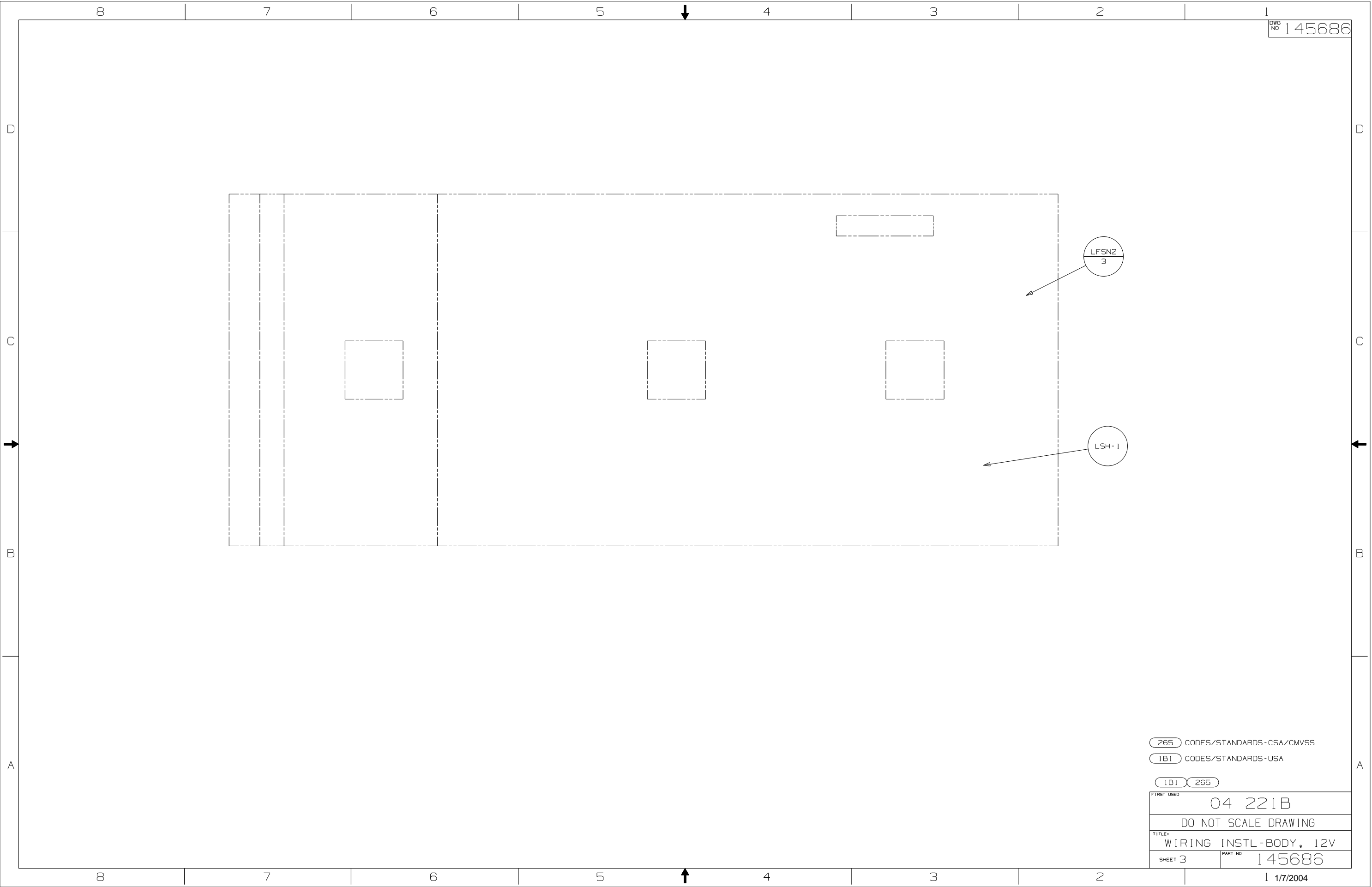
TRAILER PLUG ASM
TO HITCH BRACKET

- 6 MOUNT WALLPLATE WITH SWITCH TOWARD INBOARD SIDE OF MOTORHOME.
- 5 USE ONE OF THE SPEAKERS PROVIDED IN THE KIT. SEND THE SCREWS IN THE KIT TO THE SURPLUS STORE. SEND THE KIT WIRE ASM-PIGTAIL TO WIRE PREP TO BE INCORPORATED INTO A WIRE ASM.
- 4 ROUTE WIRES THRU ROOF.
- 3 WIRE INTEGRAL TO SIDEWALL.
- 2 WIRE ROUTE PASSES THRU FLOOR.
- 1 ALL WIRES TO BE SECURED WITH CLAMP 10495-01-000 OR CLIP 80734-01-000 EVERY 600MM. USE SCREW 667-10-12B UNLESS OTHERWISE SPECIFIED.

NOTES:

- 168 GEN-2.8KW ONAN MICROLITE
- 265 CODES/STANDARDS-CSA/CMVSS
- 1B1 CODES/STANDARDS-USA

FIRST USED	04 221B
TITLE	DO NOT SCALE DRAWING
	WIRING INSTL-BODY, 12V
SHEET 2	PART NO 145686

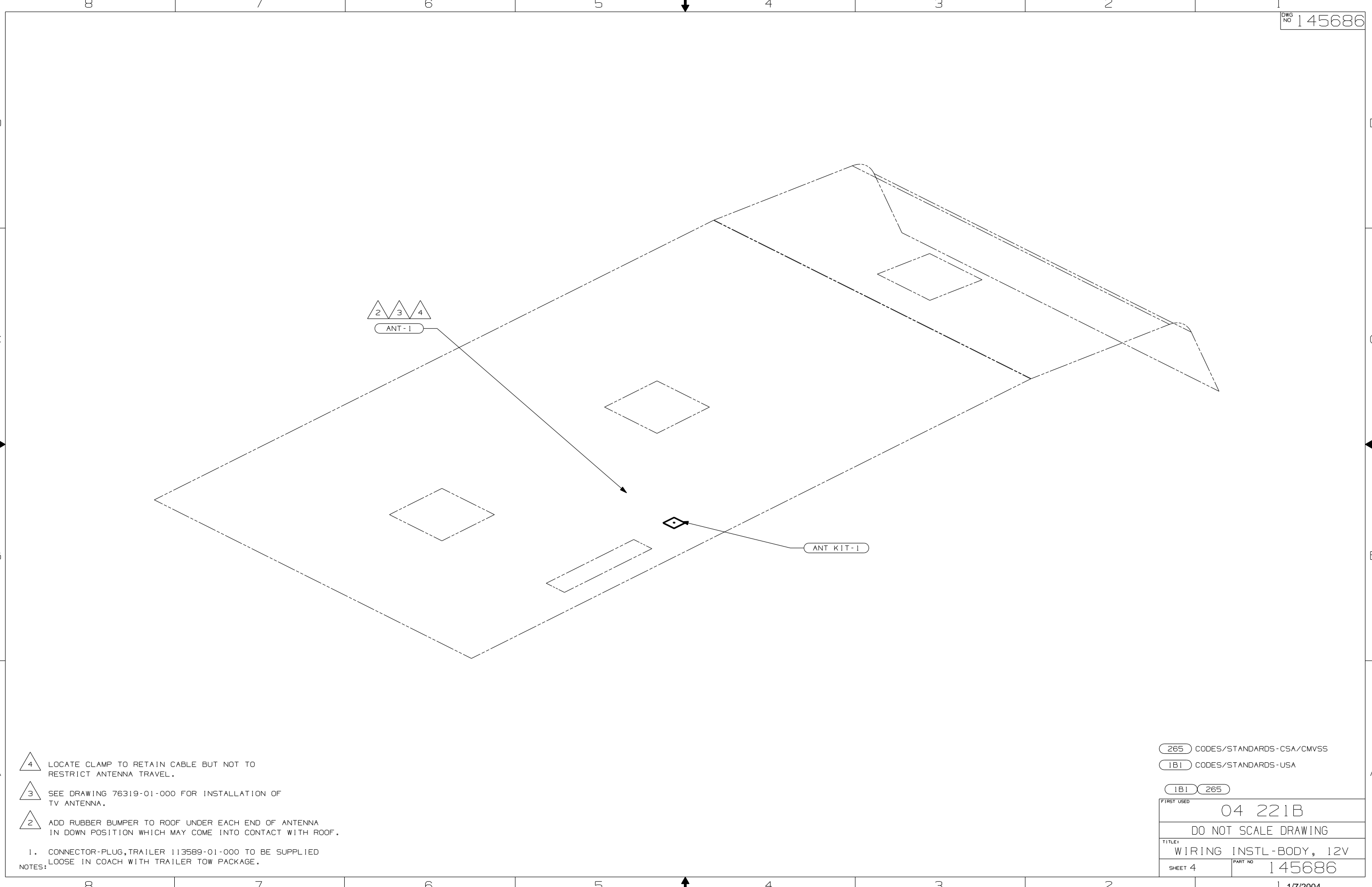


265 CODES/STANDARDS - CSA/CMVSS

1B1 CODES/STANDARDS - USA

1B1 265

FIRST USED	04 221B
DO NOT SCALE DRAWING	
TITLE:	WIRING INSTL - BODY, 12V
SHEET 3	PART NO 145686



- 4 LOCATE CLAMP TO RETAIN CABLE BUT NOT TO RESTRICT ANTENNA TRAVEL.
- 3 SEE DRAWING 76319-01-000 FOR INSTALLATION OF TV ANTENNA.
- 2 ADD RUBBER BUMPER TO ROOF UNDER EACH END OF ANTENNA IN DOWN POSITION WHICH MAY COME INTO CONTACT WITH ROOF.

1. CONNECTOR-PLUG, TRAILER 113589-01-000 TO BE SUPPLIED LOOSE IN COACH WITH TRAILER TOW PACKAGE.

265 CODES/STANDARDS-CSA/CMVSS

1B1 CODES/STANDARDS-USA

1B1 265

FIRST USED	04 221B
DO NOT SCALE DRAWING	
TITLE:	WIRING INSTL-BODY, 12V
SHEET 4	PART NO 145686