



DANGER

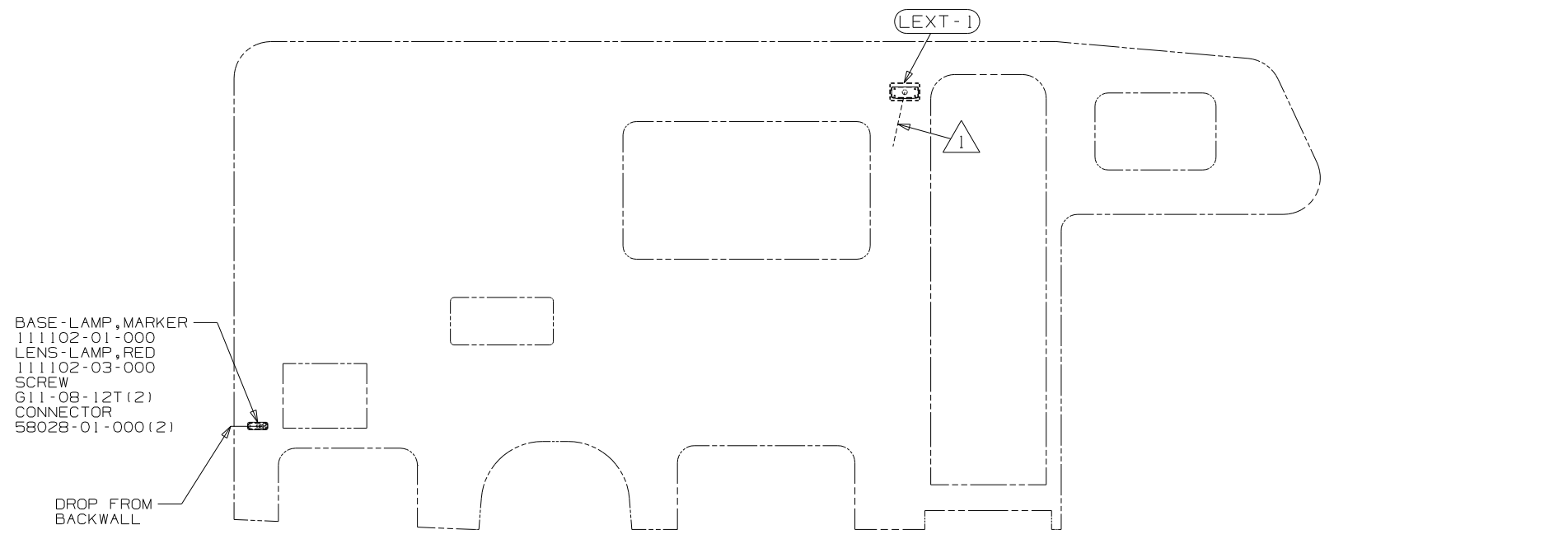
Danger of electrical shock, burns or death. Always remove all power sources before attempting any repair, service or diagnostic work. Power can be present from shore power, generator, inverter or battery. All power sources must be disabled and secured before performing any service.



CAUTION

If you lack the skills, tools or equipment to perform diagnostic or repair work leave such work to an authorized Winnebago Industries dealer or other qualified shop.

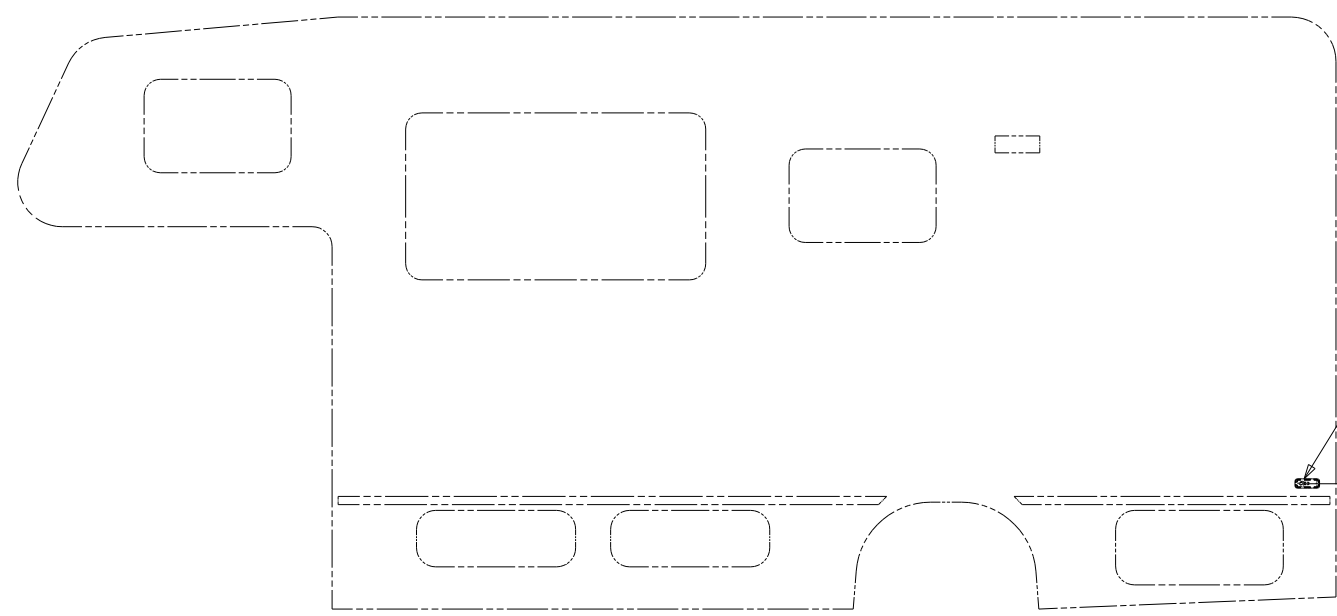
8 7 6 5 4 3 2



BASE-LAMP, MARKER
111102-01-000
LENS-LAMP, RED
111102-03-000
SCREW
G11-08-12T (2)
CONNECTOR
58028-01-000 (2)

DROP FROM
BACKWALL

(LEXT-1)



BASE-LAMP, MARKER
111102-01-000
LENS-LAMP, RED
111102-03-000
SCREW
G11-08-12T (2)
CONNECTOR
58028-01-000 (2)

DROP FROM
BACKWALL

(265) CODES/STANDARDS CSA
(1B1) CODES/STANDARDS USA

(1B1) (265)



DFTR	ORIG. DATE
CHKR	ALL DIMENSIONS ARE IN MILLIMETERS
P.E.	FIRST USED
M.E.	02 221B
DSNR	

UNSPECIFIED TOLERANCES ARE:	MATERIAL:
WHOLE DIM (X) :	
ONE-PLACE (X.X) :	
TWO-PLACE (X.XX) :	
ANGLE :	
THIRD ANGLE PROJECTION	

DO NOT SCALE DRAWING

TITLE:	WIRING INSTL-EXTERIOR LAMPS
SHEET 1 OF 2	PART NO 139484

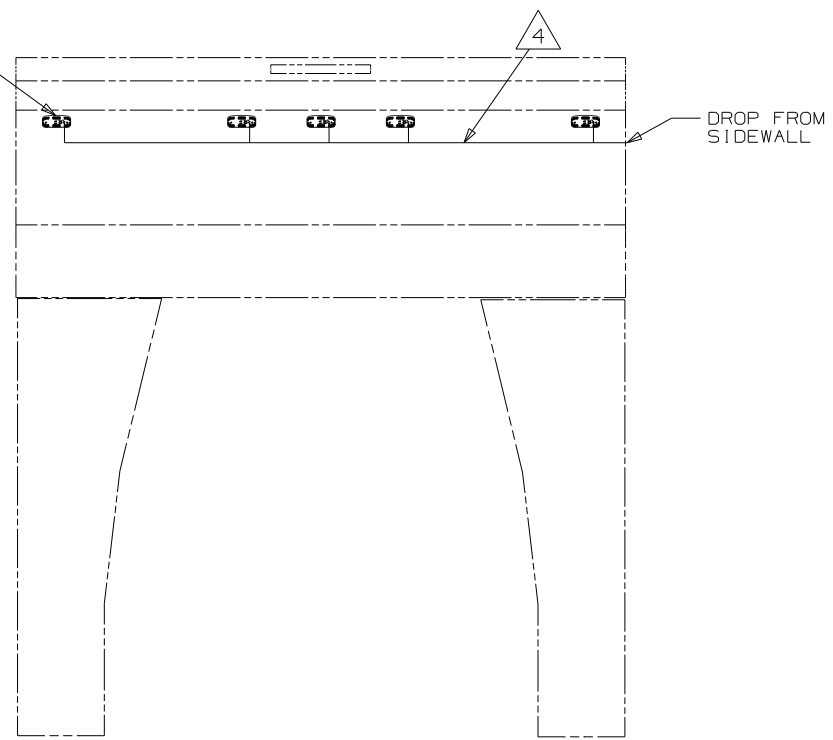
FOR ELECTRICAL TORQUE SPECIFICATIONS SEE DWG NO. 128783-01-000

X-X FOR ELECTRICAL CALLOUTS SEE DWG NO. 121339-01-000

NOTES:
1 WIRE IS INTEGRAL TO SIDEWALL

8 7 6 5 4 3 2

BASE-LAMP, MARKER
 111102-01-000(5)
 LENS-LAMP, AMBER
 111102-02-000(5)
 SCREW
 G11-08-12T(10)
 CONNECTOR
 58028-01-000(10)
 RED - MM
 WHT - MS



BASE-LAMP, MARKER
 111102-01-000(5)
 LENS-LAMP, RED
 111102-03-000(5)
 SCREW
 G11-08-12T(10)
 CONNECTOR
 58028-01-000(10)
 RED - MM
 WHT - MS

LAMP ASM-TURN, AMBER
 115632-02-CHT
 SCREW
 G11-08-12T(4)
 BLK - SD
 WHT - MS

LAMP ASM-STOP/TAIL
 LICENSE/BACKUP
 115632-04-CHT
 SCREW
 G11-08-12T(4)
 CONNECTOR
 58028-01-000(4)
 RED - TR
 BLK - X
 GRN - MM
 WHT - MS

DROP TO
 SIDEWALL
 MARKER

TRAILER PLUG ASM
 TO HITCH BRACKET

WIRE ASM-COACH

3 PIN, 3 PIN
 TO WIRE ASM-COACH

LAMP-BRAKE, CENTER
 136916-01-000
 SCREW
 G11-08-20T(2)
 CONNECTOR
 112623-01-000(2)
 BLK/WHT - X
 BLK - MS

LAMP ASM-TURN, AMBER
 115632-02-CHT
 SCREW
 G11-08-12T(4)
 BLK - SC
 WHT - MS

LAMP ASM-STOP/TAIL/BACKUP
 115632-03-CHT
 SCREW
 G11-08-12T(4)
 CONNECTOR
 58028-01-000(4)
 RED - TR
 BLK - X
 GRN - MM
 WHT - MS

DROP TO
 SIDEWALL
 MARKER

4 WIRE IS INTEGRAL TO ROOF ASM.

3 WIRE IS INTEGRAL TO BACKWALL.

2 SEE WIRING INSTL-BODY, 12V FOR ADDITIONAL INFORMATION.

1 CONNECTOR-PLUG, TRAILER 113589-01-000 TO BE SUPPLIED LOOSE IN COACH WITH TRAILER TOW PACKAGE.

NOTES:

265 CODES/STANDARDS CSA

1B1 CODES/STANDARDS USA

1B1 265

FOR ELECTRICAL
 TORQUE
 SPECIFICATIONS
 SEE DWG NO.
 128783-01-000

X-X FOR
 ELECTRICAL
 CALLOUTS
 SEE DWG NO.
 121339-01-000

FIRST USED	02 221B
DO NOT SCALE DRAWING	
TITLE:	WIRING INSTL-EXTERIOR LAMPS
SHEET	2
PART NO	139484