



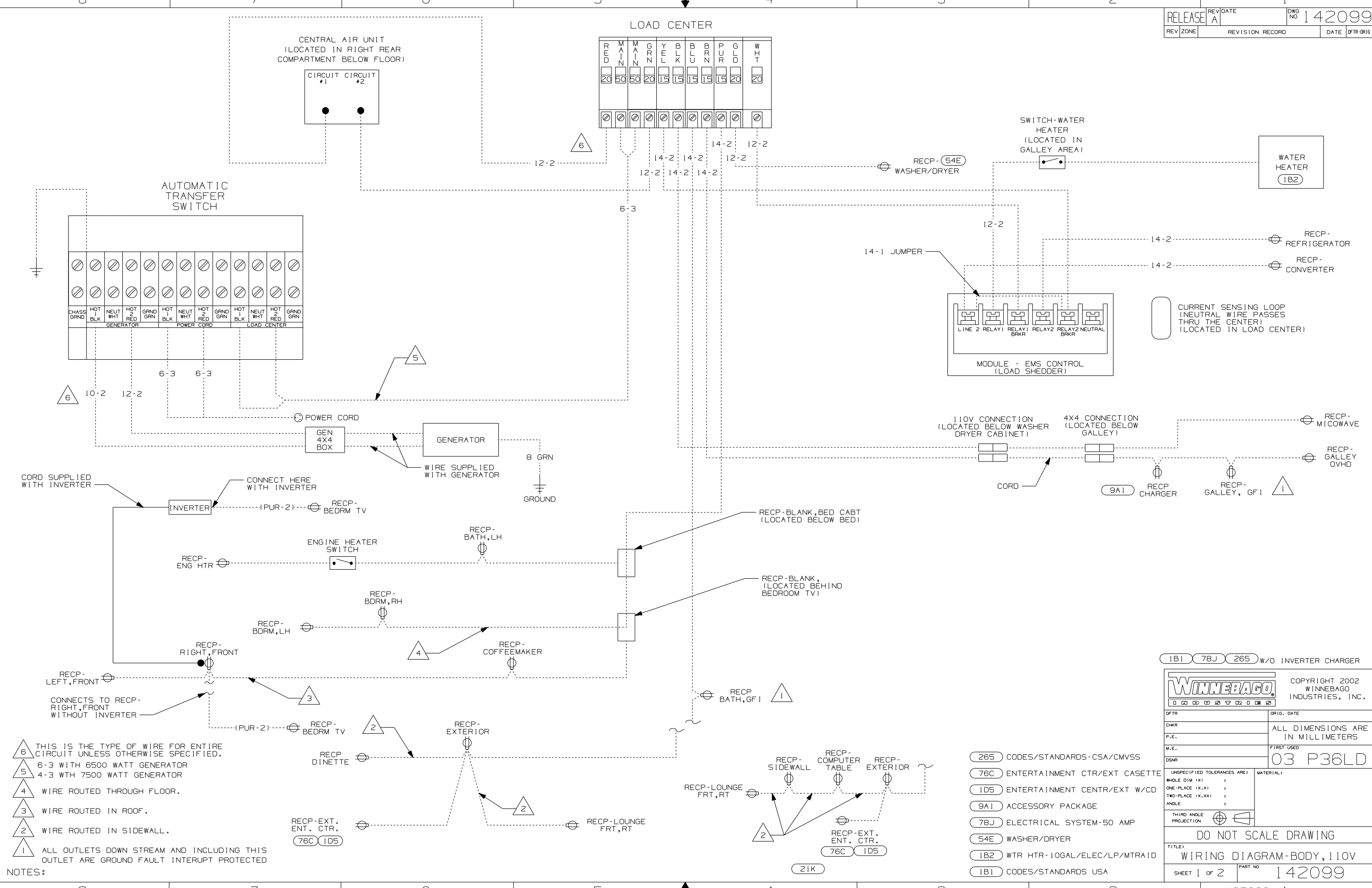
DANGER

Danger of electrical shock, burns or death. Always remove all power sources before attempting any repair, service or diagnostic work. Power can be present from shore power, generator, inverter or battery. All power sources must be disabled and secured before performing any service.



CAUTION

If you lack the skills, tools or equipment to perform diagnostic or repair work leave such work to an authorized Winnebago Industries dealer or other qualified shop.



- NOTES:
- 6 THIS IS THE TYPE OF WIRE FOR ENTIRE CIRCUIT UNLESS OTHERWISE SPECIFIED.
 - 5 6-3 WITH 6500 WATT GENERATOR
 - 4 4-3 WITH 7500 WATT GENERATOR
 - 4 WIRE ROUTED THROUGH FLOOR.
 - 3 WIRE ROUTED IN ROOF.
 - 2 WIRE ROUTED IN SIDEWALL.
 - 1 ALL OUTLETS DOWN STREAM AND INCLUDING THIS OUTLET ARE GROUND FAULT INTERRUPT PROTECTED

- 265 CODES/STANDARDS-CSA/CMVSS
- 76C ENTERTAINMENT CTR/EXT CASSETTE
- 1D5 ENTERTAINMENT CENTR/EXT W/CD
- 9A1 ACCESSORY PACKAGE
- 78J ELECTRICAL SYSTEM-50 AMP
- 54E WASHER/DRYER
- 1B2 WTR HTR-10GAL/ELEC/LP/MTR1D
- 1B1 CODES/STANDARDS USA

1B1 78J 265 W/O INVERTER CHARGER

WINNEBAGO COPYRIGHT 2002 WINNEBAGO INDUSTRIES, INC.

DFTR	ORIG. DATE
CHKR	ALL DIMENSIONS ARE IN MILLIMETERS
P.E.	
M.E.	FIRST USED
DSNR	03 P36LD

UNSPECIFIED TOLERANCES ARE: MATERIAL:

WHOLE DIM (X) :
ONE-PLACE (X.X) :
TWO-PLACE (X.XX) :
ANGLE :

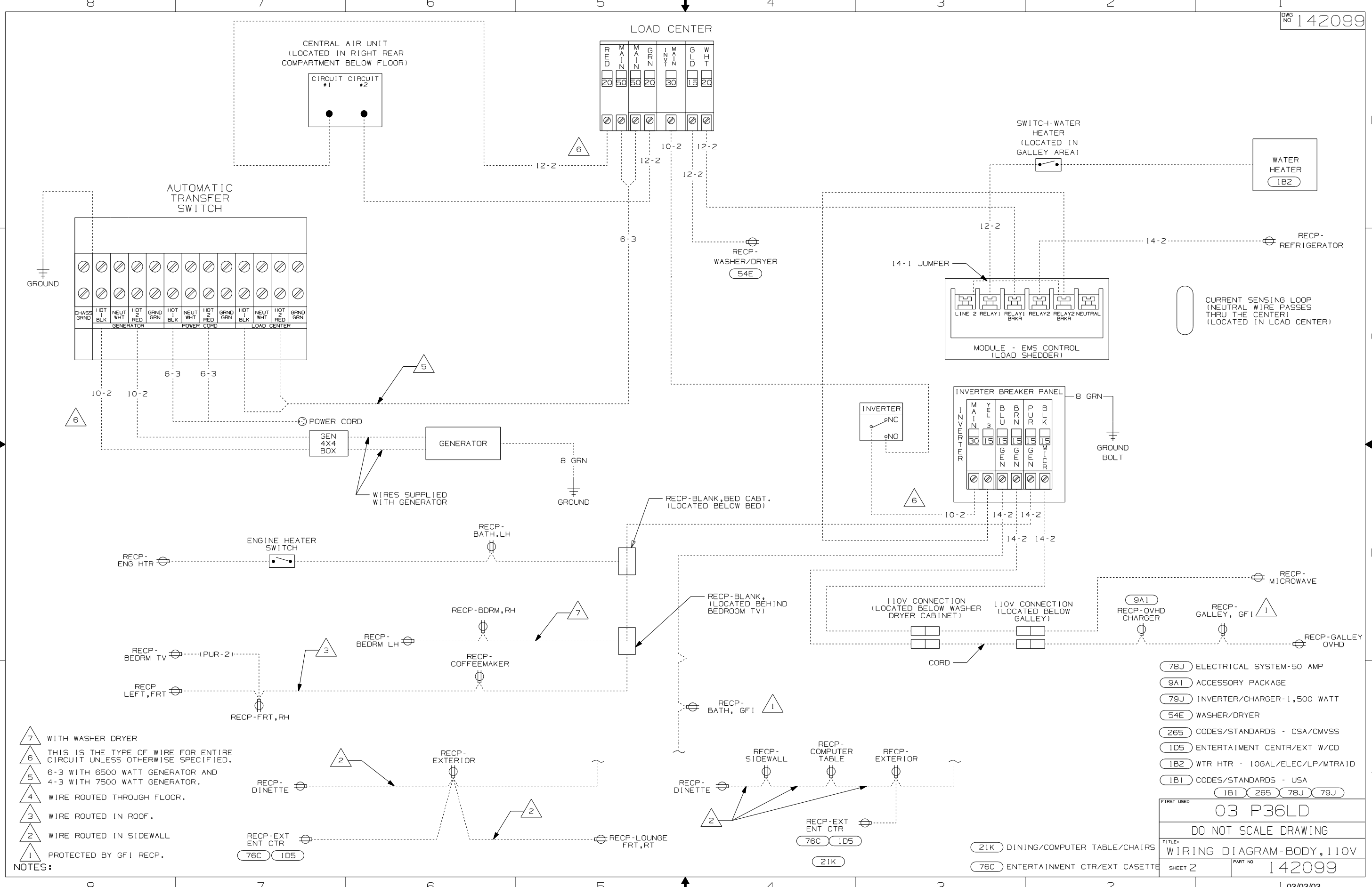
THIRD ANGLE PROJECTION

DO NOT SCALE DRAWING

TITLE: WIRING DIAGRAM-BODY, 110V

SHEET 1 OF 2 PART NO 142099

REF: 137996 1 03/03/03



- NOTES:**
- 7 WITH WASHER DRYER
 - 6 THIS IS THE TYPE OF WIRE FOR ENTIRE CIRCUIT UNLESS OTHERWISE SPECIFIED.
 - 5 6-3 WITH 6500 WATT GENERATOR AND 4-3 WITH 7500 WATT GENERATOR.
 - 4 WIRE ROUTED THROUGH FLOOR.
 - 3 WIRE ROUTED IN ROOF.
 - 2 WIRE ROUTED IN SIDEWALL
 - 1 PROTECTED BY GF1 RECP.

(78J)	ELECTRICAL SYSTEM-50 AMP		
(9A1)	ACCESSORY PACKAGE		
(79J)	INVERTER/CHARGER-1,500 WATT		
(54E)	WASHER/DRYER		
(265)	CODES/STANDARDS - CSA/CMVSS		
(1D5)	ENTERTAINMENT CTR/EXT W/CD		
(1B2)	WTR HTR - 10GAL/ELEC/LP/MTR1D		
(1B1)	CODES/STANDARDS - USA		
(1B1)	(265)	(78J)	(79J)
FIRST USED			
03 P36LD			
DO NOT SCALE DRAWING			
TITLE:			
WIRING DIAGRAM-BODY, 110V			
SHEET 2	PART NO 142099		