



DANGER

Danger of electrical shock, burns or death. Always remove all power sources before attempting any repair, service or diagnostic work. Power can be present from shore power, generator, inverter or battery. All power sources must be disabled and secured before performing any service.

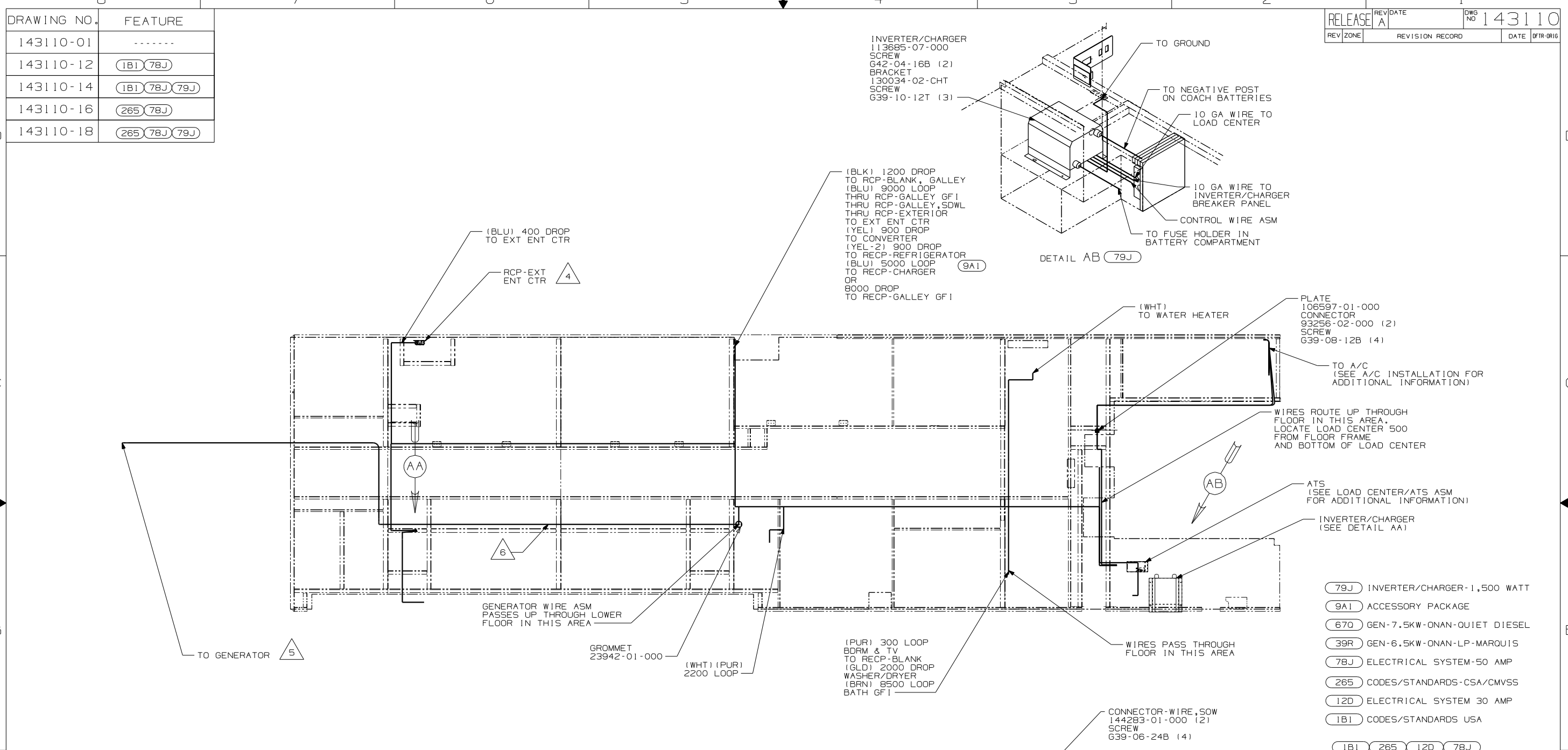


CAUTION

If you lack the skills, tools or equipment to perform diagnostic or repair work leave such work to an authorized Winnebago Industries dealer or other qualified shop.

DRAWING NO.	FEATURE
143110-01	-----
143110-12	(1B1) (78J)
143110-14	(1B1) (78J) (79J)
143110-16	(265) (78J)
143110-18	(265) (78J) (79J)

RELEASE	REV DATE	DWG NO	143110
REV ZONE	REVISION RECORD	DATE	DFTR-ORIG



- 6. ROUTED ALONG CHASSIS RAIL IN THIS AREA.
 - 5. SEE GENERATOR INSTALLATION FOR ADDITIONAL INFORMATION.
 - 4. SEE EXT ENT CTR COMPT FOR ADDITIONAL INFORMATION.
 - 3. WIRE THAT REST ON WIRE TRAYS ARE TO BE TIED DOWN WITH WIRE TIE 8343-02-000.
 - 2. CLAMP TO FLOOR SUPPORT TUBES AS NECESSARY WITH CLAMP 10497-01-000.
 - 1. ALL WIRE TO BE CLAMPED WITH CLAMP 10495-01-000 OR CLIP 80734-02-000 EVERY 700. USE SCREW 667-10-12B
- NOTES: UNLESS OTHERWISE SPECIFIED.

FOR ELECTRICAL TORQUE SPECIFICATIONS SEE DWG NO. 128783-01-000

X-X

FOR ELECTRICAL CALLOUTS SEE DWG NO. 121339-01-000

- (79J) INVERTER/CHARGER-1,500 WATT
 - (9A1) ACCESSORY PACKAGE
 - (670) GEN-7.5KW-ONAN-QUIET DIESEL
 - (39R) GEN-6.5KW-ONAN-LP-MARQUIS
 - (78J) ELECTRICAL SYSTEM-50 AMP
 - (265) CODES/STANDARDS-CSA/CMVSS
 - (12D) ELECTRICAL SYSTEM 30 AMP
 - (1B1) CODES/STANDARDS USA
- (1B1) (265) (12D) (78J)

WINNEBAGO COPYRIGHT 2002 WINNEBAGO INDUSTRIES, INC.

DFTR	ORIG. DATE
CHKR	ALL DIMENSIONS ARE IN MILLIMETERS
P.E.	
M.E.	FIRST USED
DSNR	03 P36GD

UNSPECIFIED TOLERANCES ARE: MATERIAL:

WHOLE DIM (X) :
ONE-PLACE (X.X) :
TWO-PLACE (X.XX) :
ANGLE :

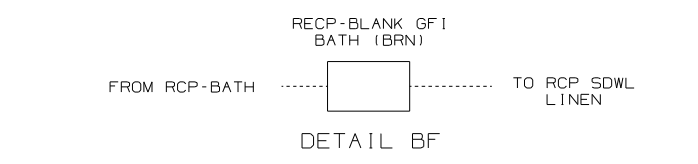
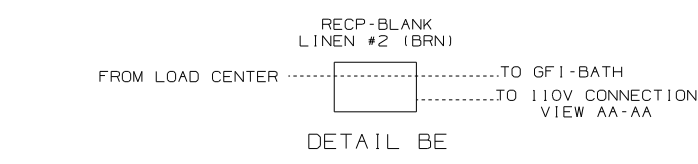
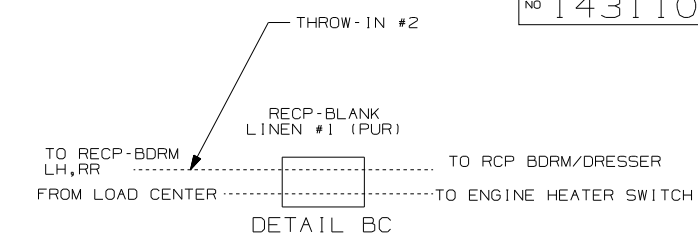
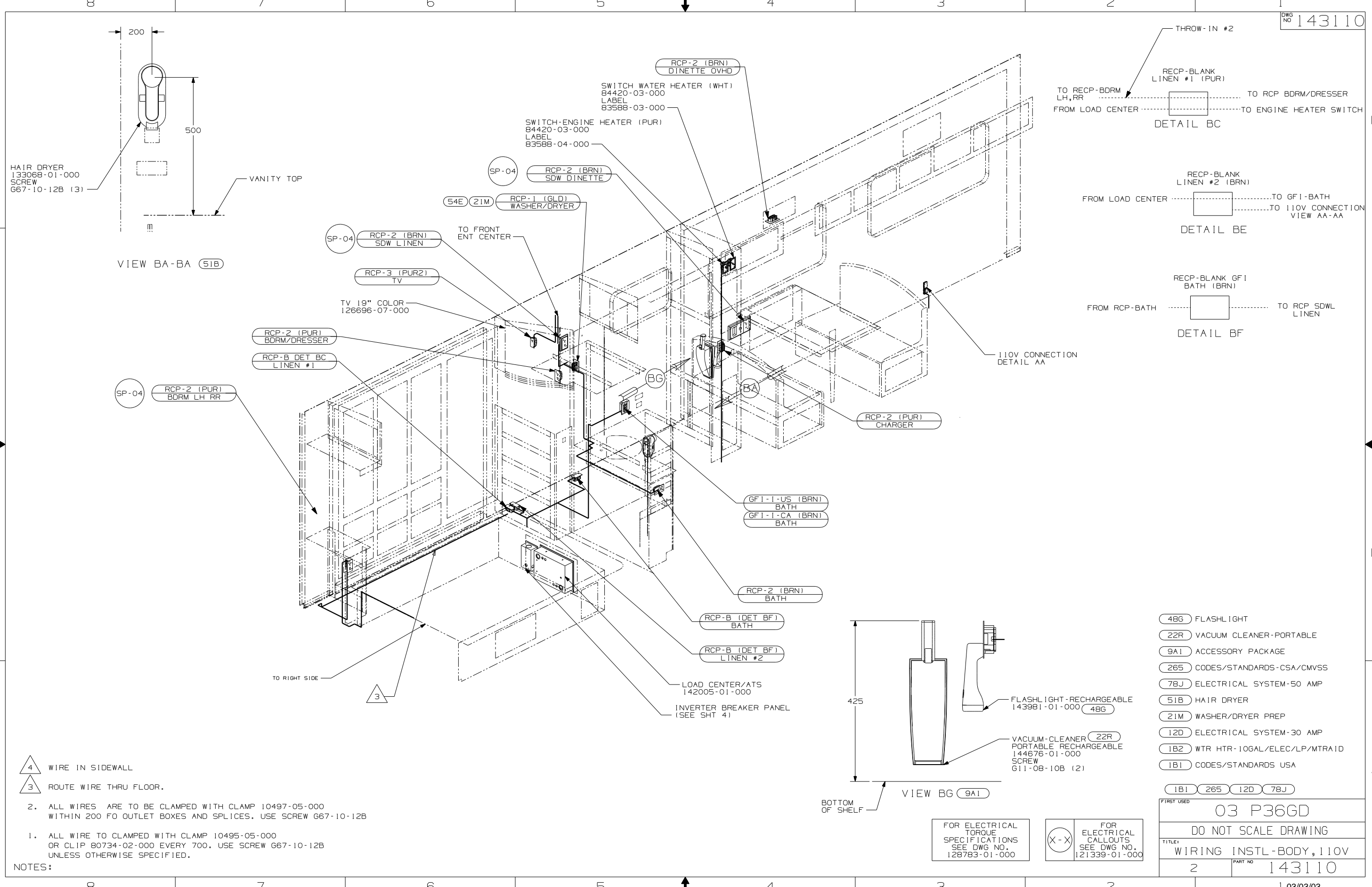
THIRD ANGLE PROJECTION

DO NOT SCALE DRAWING

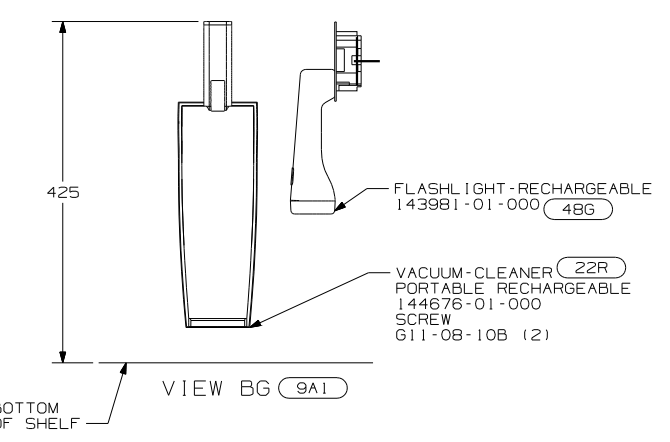
TITLE: WIRING INSTL-BODY, 110V

SHEET 1 OF 3 PART NO 143110

REF: 1 03/03/03



110V CONNECTION
DETAIL AA



- (48G) FLASHLIGHT
- (22R) VACUUM CLEANER-PORTABLE
- (9A1) ACCESSORY PACKAGE
- (265) CODES/STANDARDS-CSA/CMVSS
- (78J) ELECTRICAL SYSTEM-50 AMP
- (51B) HAIR DRYER
- (21M) WASHER/DRYER PREP
- (12D) ELECTRICAL SYSTEM-30 AMP
- (1B2) WTR HTR-10GAL/ELEC/LP/MTR#1D
- (1B1) CODES/STANDARDS USA

FOR ELECTRICAL
TORQUE
SPECIFICATIONS
SEE DWG NO.
128783-01-000

FOR ELECTRICAL
CALLOUTS
SEE DWG NO.
121339-01-000

HAIR DRYER
133068-01-000
SCREW
G67-10-12B (3)

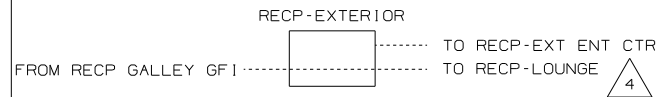
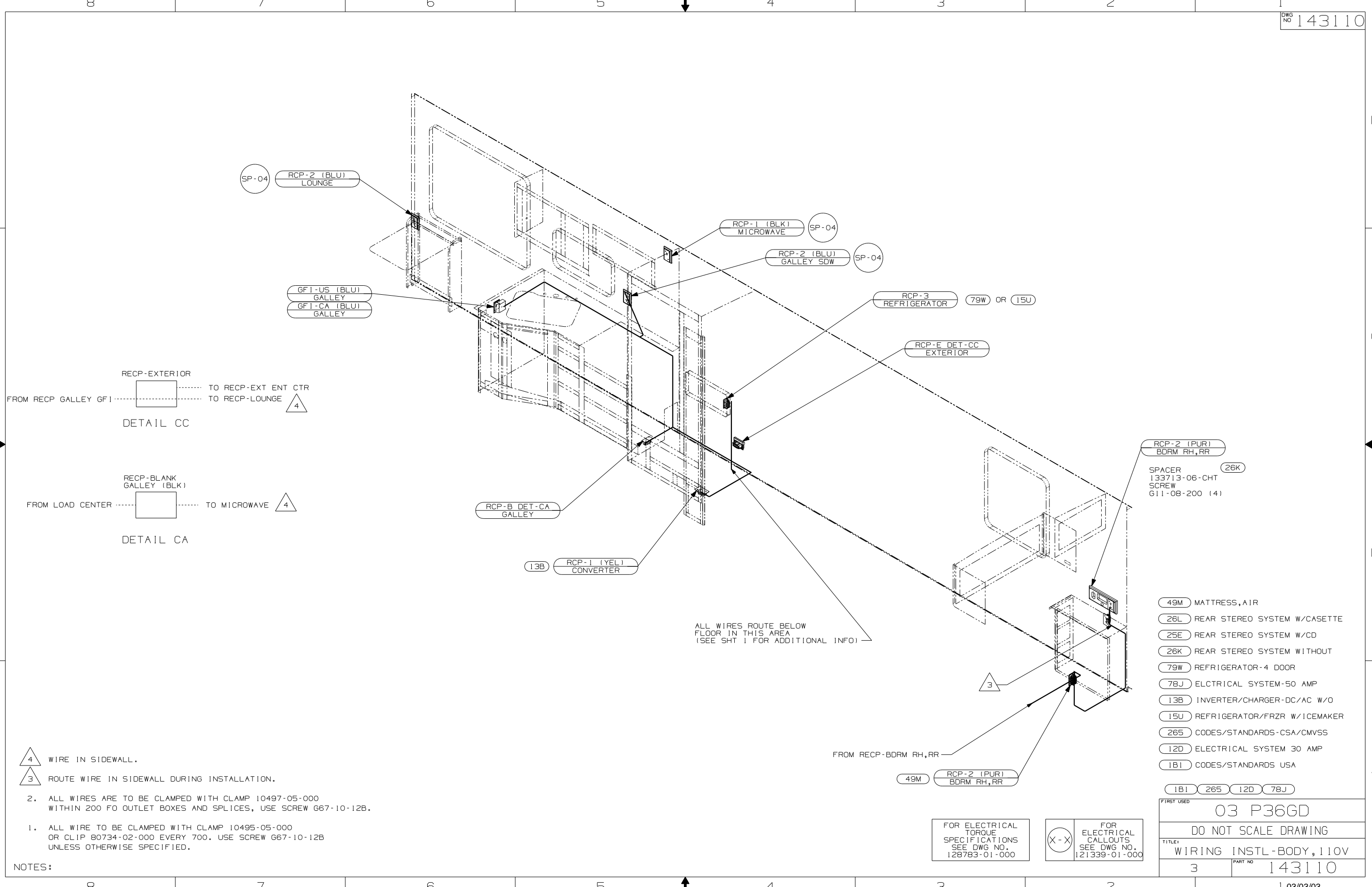
VIEW BA-BA (51B)

VIEW BG (9A1)

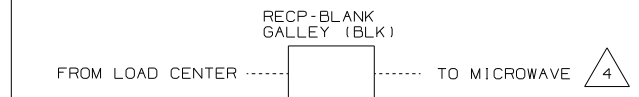
- 4 WIRE IN SIDEWALL
- 3 ROUTE WIRE THRU FLOOR.

- NOTES:
2. ALL WIRES ARE TO BE CLAMPED WITH CLAMP 10497-05-000 WITHIN 200 FO OUTLET BOXES AND SPLICES. USE SCREW G67-10-12B
 1. ALL WIRE TO CLAMPED WITH CLAMP 10495-05-000 OR CLIP 80734-02-000 EVERY 700. USE SCREW G67-10-12B UNLESS OTHERWISE SPECIFIED.

FIRST USED	
03 P36GD	
DO NOT SCALE DRAWING	
TITLE:	WIRING INSTL-BODY, 110V
2	PART NO 143110



DETAIL CC



DETAIL CA

ALL WIRES ROUTE BELOW FLOOR IN THIS AREA (SEE SH 1 FOR ADDITIONAL INFO)

RCP-2 (PUR) BDRM RH,RR
 SPACER 133713-06-CHT SCREW G11-08-200 (4)

- 49M MATTRESS, AIR
- 26L REAR STEREO SYSTEM W/CASSETTE
- 25E REAR STEREO SYSTEM W/CD
- 26K REAR STEREO SYSTEM WITHOUT
- 79W REFRIGERATOR-4 DOOR
- 78J ELECTRICAL SYSTEM-50 AMP
- 13B INVERTER/CHARGER-DC/AC W/O
- 15U REFRIGERATOR/FRZR W/ICEMAKER
- 265 CODES/STANDARDS-CSA/CMVSS
- 12D ELECTRICAL SYSTEM 30 AMP
- 1B1 CODES/STANDARDS USA

- NOTES:
- 4 WIRE IN SIDEWALL.
 - 3 ROUTE WIRE IN SIDEWALL DURING INSTALLATION.
 2. ALL WIRES ARE TO BE CLAMPED WITH CLAMP 10497-05-000 WITHIN 200 FO OUTLET BOXES AND SPLICES, USE SCREW G67-10-12B.
 1. ALL WIRE TO BE CLAMPED WITH CLAMP 10495-05-000 OR CLIP B0734-02-000 EVERY 700. USE SCREW G67-10-12B UNLESS OTHERWISE SPECIFIED.

FOR ELECTRICAL TORQUE SPECIFICATIONS SEE DWG NO. 128783-01-000

FOR ELECTRICAL CALLOUTS SEE DWG NO. 121339-01-000

FIRST USED	
03 P36GD	
DO NOT SCALE DRAWING	
TITLE: WIRING INSTL-BODY, 110V	
3	PART NO 143110