



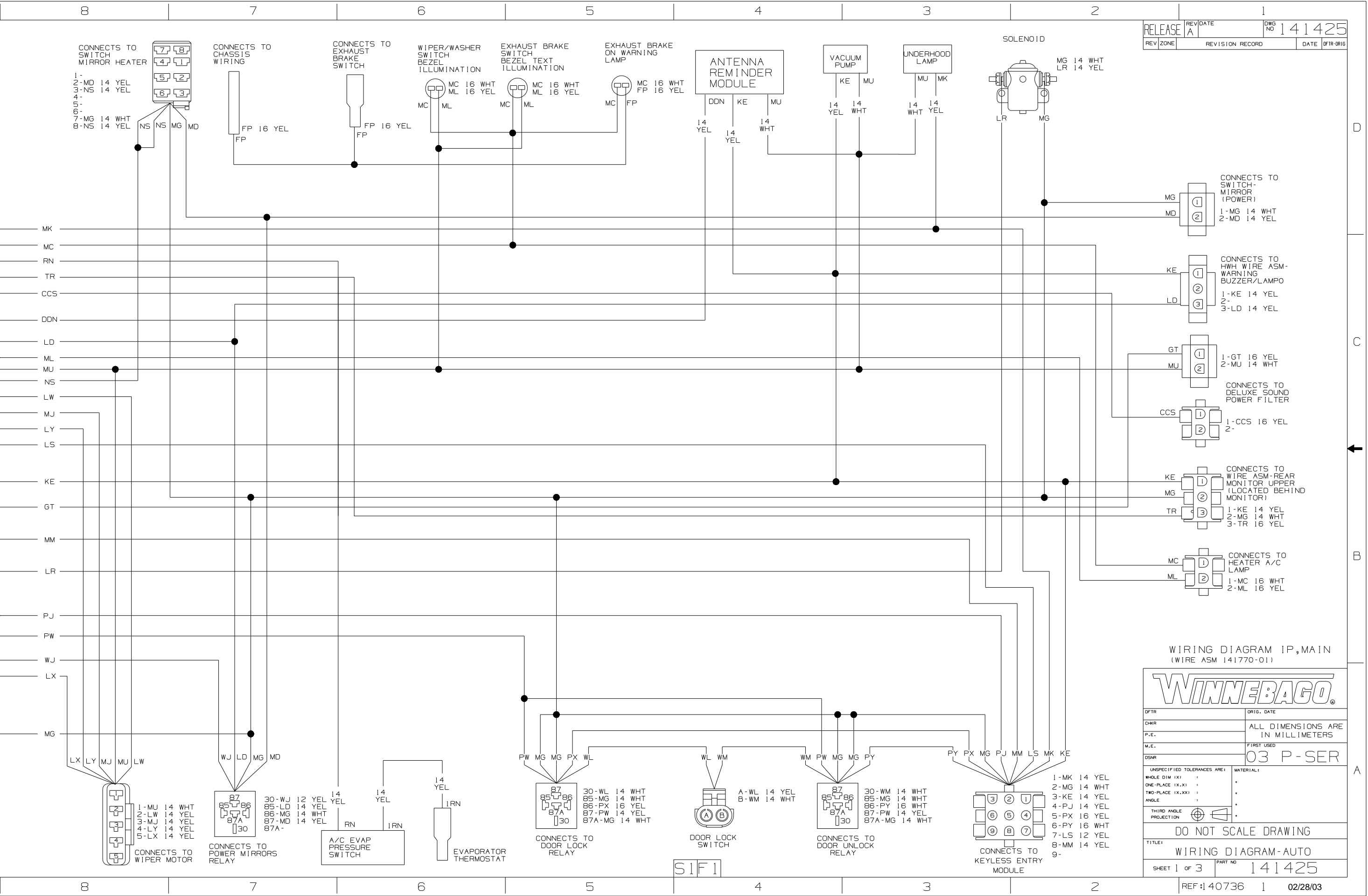
DANGER

Danger of electrical shock, burns or death. Always remove all power sources before attempting any repair, service or diagnostic work. Power can be present from shore power, generator, inverter or battery. All power sources must be disabled and secured before performing any service.



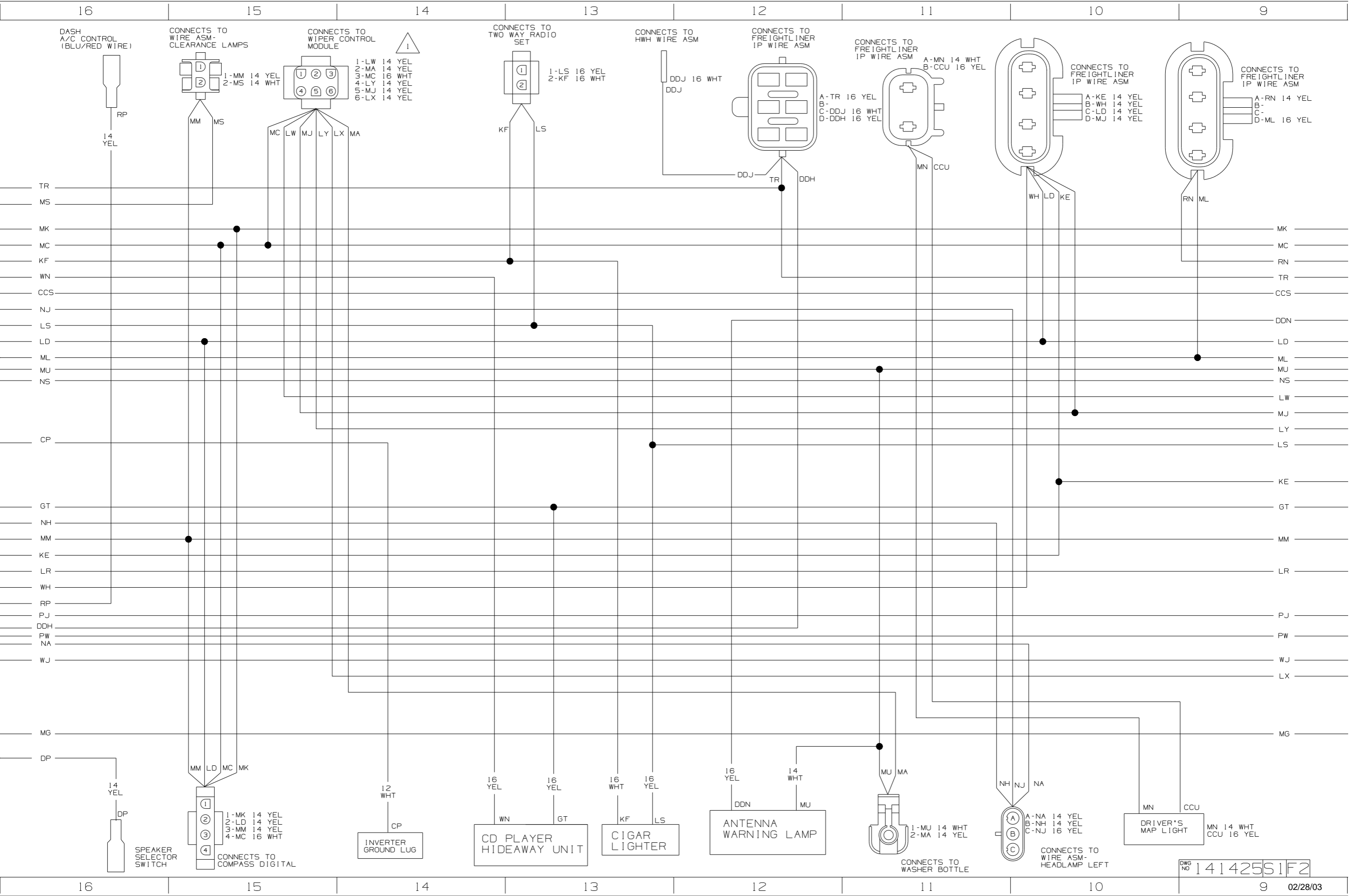
CAUTION

If you lack the skills, tools or equipment to perform diagnostic or repair work leave such work to an authorized Winnebago Industries dealer or other qualified shop.



WIRING DIAGRAM IP,MAIN
(WIRE ASM 141770-01)

WINNEBAGO	
DFTR	ORIG. DATE
CHNR	ALL DIMENSIONS ARE IN MILLIMETERS
P.E.	
M.E.	FIRST USED
DSNR	03 P-SER
UNSPECIFIED TOLERANCES ARE:	MATERIAL:
WHOLE DIM (X.X)	
ONE-PLACE (X.X)	
TWO-PLACE (X.XX)	
ANGLE	
THIRD ANGLE PROJECTION	
DO NOT SCALE DRAWING	
TITLE: WIRING DIAGRAM-AUTO	
SHEET 1 of 3	PART NO 141425
REF: 140736	1 02/28/03



16
DASH
A/C CONTROL
(BLU/RED WIRE)

15
CONNECTS TO
WIRE ASM-
CLEARANCE LAMPS

14
CONNECTS TO
WIPER CONTROL
MODULE

13
CONNECTS TO
TWO WAY RADIO
SET

12
CONNECTS TO
HWH WIRE ASM

12
CONNECTS TO
FREIGHTLINER
IP WIRE ASM

11
CONNECTS TO
FREIGHTLINER
IP WIRE ASM

10
CONNECTS TO
FREIGHTLINER
IP WIRE ASM

9
CONNECTS TO
FREIGHTLINER
IP WIRE ASM



- 1-LW 14 YEL
- 2-MA 14 YEL
- 3-MC 16 WHT
- 4-LY 14 YEL
- 5-MJ 14 YEL
- 6-LX 14 YEL

- 1-LS 16 YEL
- 2-KF 16 WHT

- A-TR 16 YEL
- B-DDJ 16 WHT
- D-DDH 16 YEL

- A-MN 14 WHT
- B-CCU 16 YEL

- A-KE 14 YEL
- B-WH 14 YEL
- C-LD 14 YEL
- D-MJ 14 YEL

- A-RN 14 YEL
- B-
- C-
- D-ML 16 YEL

- 1-MM 14 YEL
- 2-MS 14 WHT

- MC
- LW
- MJ
- LY
- LX
- MA

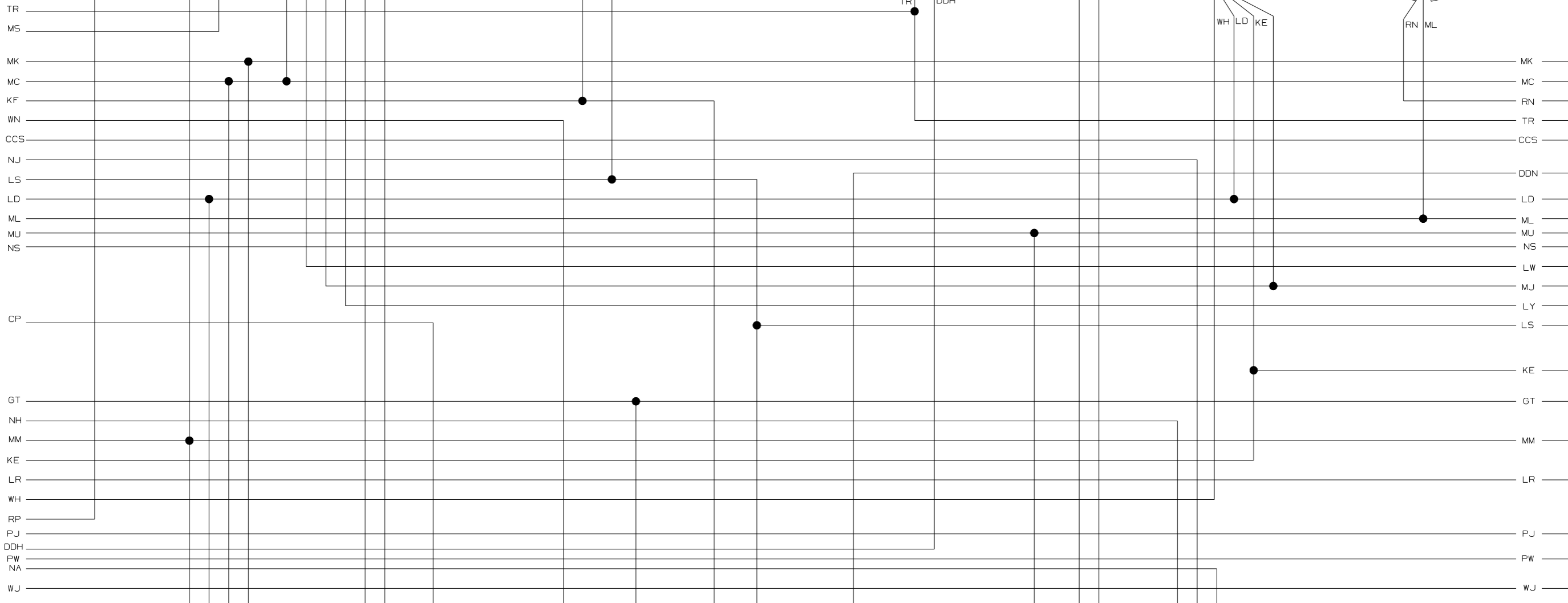
- KF
- LS

- DDJ
- TR
- DDH

- MN
- CCU

- WH
- LD
- KE

- RN
- ML



- MM
- LD
- MC
- MK

- 1-MK 14 YEL
- 2-LD 14 YEL
- 3-MM 14 YEL
- 4-MC 16 WHT

- 12 WHT

- 16 YEL
- 16 YEL

- 16 WHT
- 16 YEL

- 16 YEL
- 14 WHT

- 1-MU 14 WHT
- 2-MA 14 YEL

- A-NA 14 YEL
- B-NH 14 YEL
- C-NJ 16 YEL

- MN
- CCU
- MN 14 WHT
- CCU 16 YEL

- 14 YEL

- DP

SPEAKER
SELECTOR
SWITCH

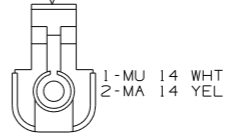
CONNECTS TO
COMPASS DIGITAL

INVERTER
GROUND LUG

CD PLAYER
HIDEAWAY UNIT

CIGAR
LIGHTER

ANTENNA
WARNING LAMP



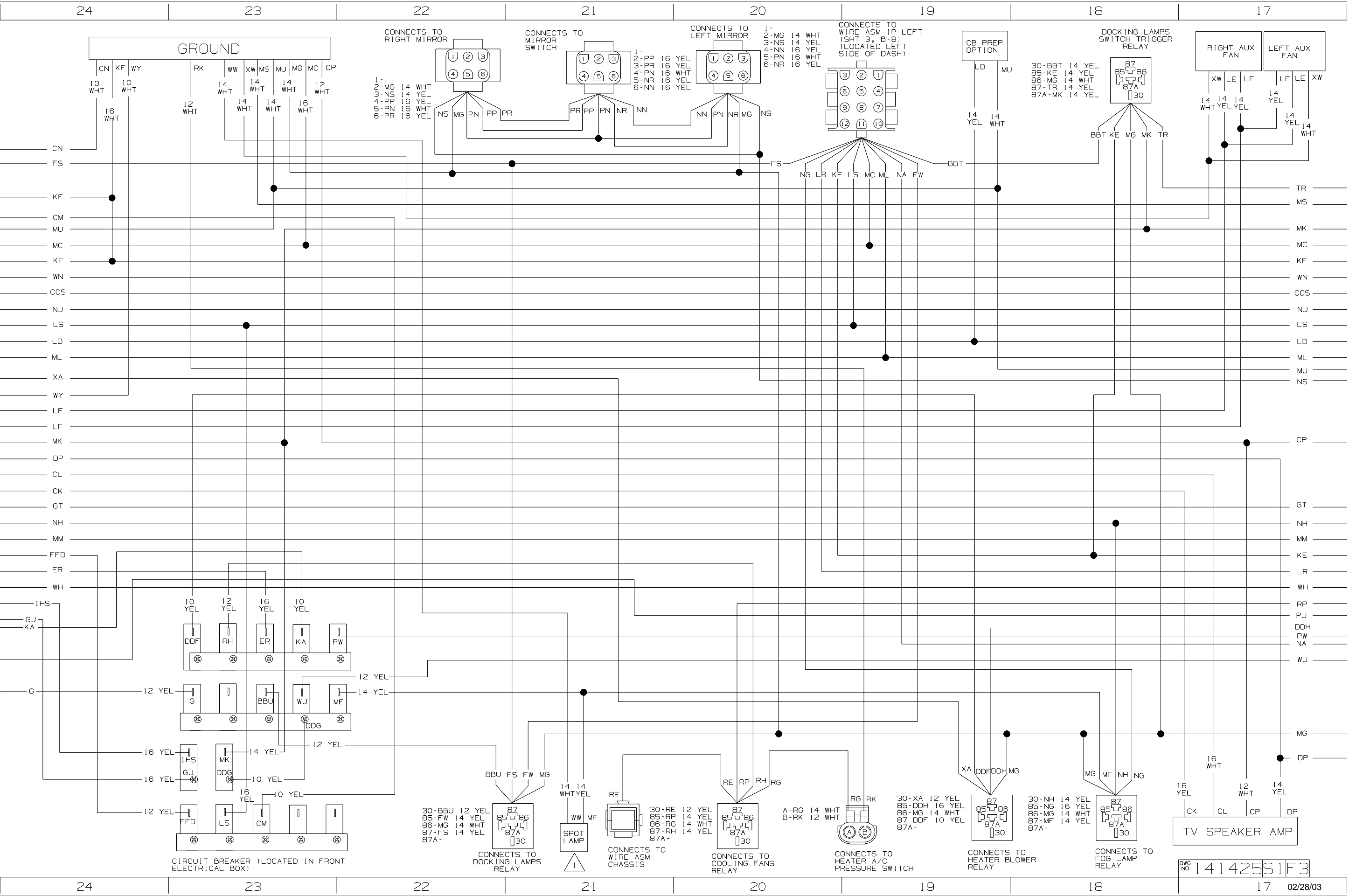
CONNECTS TO
WASHER BOTTLE

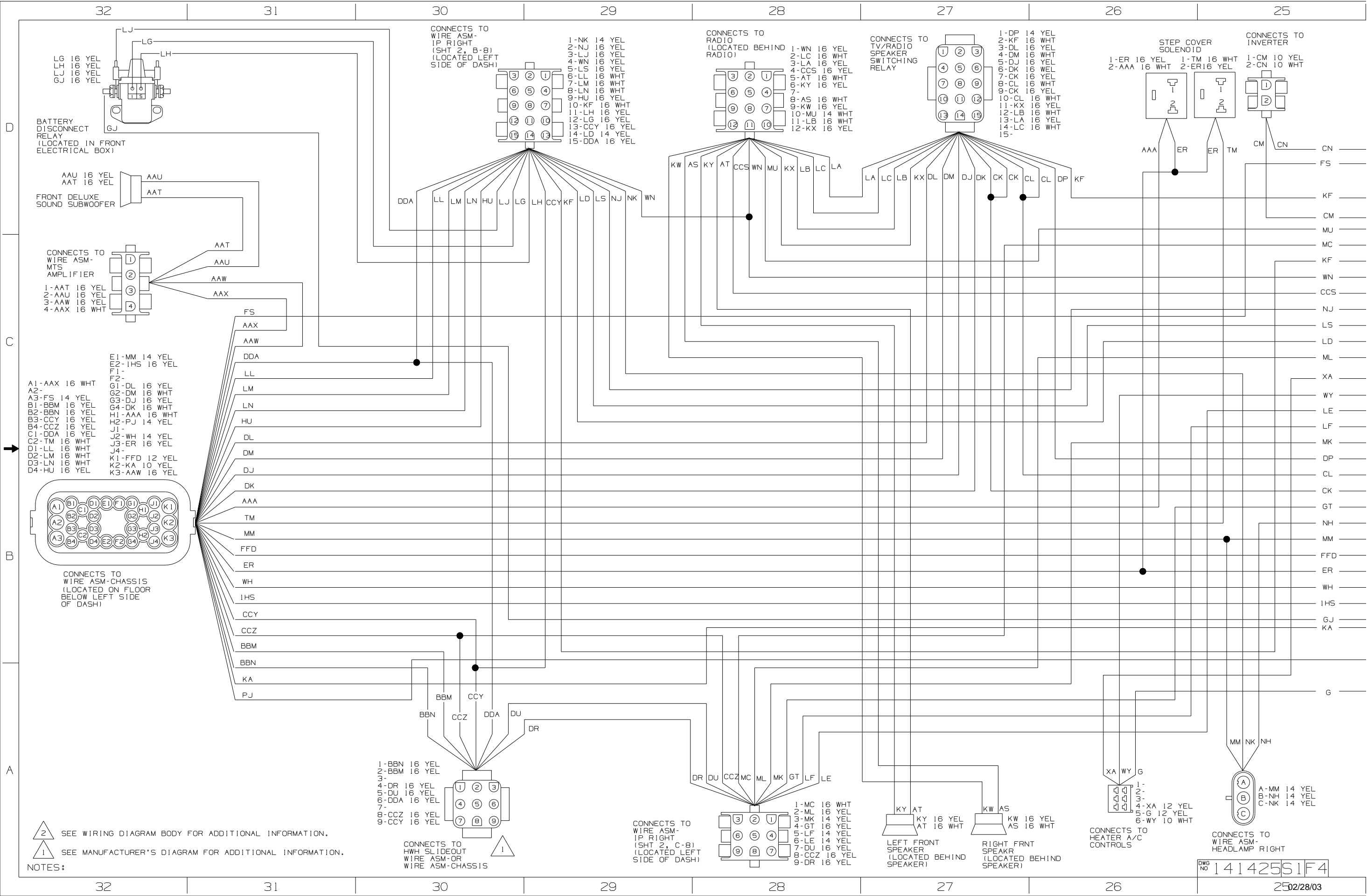
CONNECTS TO
WIRE ASM-
HEADLAMP LEFT

DRIVER'S
MAP LIGHT

DWG
NO 141425S1F2

02/28/03





CONNECTS TO WIRE ASM-IP RIGHT (SHT 2, B-8) (LOCATED LEFT SIDE OF DASH)

1-NK	14 YEL
2-NJ	16 YEL
3-LJ	16 YEL
4-WN	16 YEL
5-LS	16 YEL
6-LL	16 WHT
7-LM	16 WHT
8-LN	16 WHT
9-HU	16 YEL
10-KF	16 WHT
11-LH	16 YEL
12-LG	16 YEL
13-CCY	16 YEL
14-LD	14 YEL
15-DDA	16 YEL

CONNECTS TO RADIO (LOCATED BEHIND RADIO)

1-WN	16 YEL
2-LC	16 WHT
3-LA	16 YEL
4-CCS	16 YEL
5-AT	16 WHT
6-KY	16 YEL
7-	
8-AS	16 WHT
9-KW	16 YEL
10-MU	14 WHT
11-LB	16 WHT
12-KX	16 YEL

CONNECTS TO TV/RADIO SPEAKER SWITCHING RELAY

1-DP	14 YEL
2-KF	16 WHT
3-DL	16 WHT
4-DM	16 YEL
5-DJ	16 YEL
6-DK	16 WEL
7-CK	16 YEL
8-CL	16 WHT
9-CK	16 YEL
10-CL	16 WHT
11-KX	16 YEL
12-LB	16 WHT
13-LA	16 YEL
14-LC	16 WHT
15-	

STEP COVER SOLENOID

1-ER 16 YEL
2-AAA 16 WHT

1-TM 16 WHT
2-ER16 YEL

CONNECTS TO INVERTER

1-CM 10 YEL
2-CN 10 WHT

BATTERY DISCONNECT RELAY (LOCATED IN FRONT ELECTRICAL BOX)

LG 16 YEL
LH 16 YEL
LJ 16 YEL
GJ 16 YEL

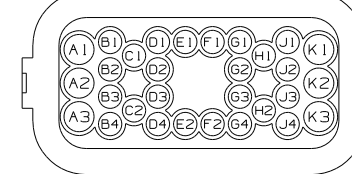
FRONT DELUXE SOUND SUBWOOFER

AAU 16 YEL
AAT 16 YEL

CONNECTS TO WIRE ASM-MTS AMPLIFIER

1-AAT	16 YEL
2-AAU	16 YEL
3-AAW	16 YEL
4-AAX	16 WHT

A1-AAx	16 WHT
A2-	
A3-FS	14 YEL
B1-BBM	16 YEL
B2-BBN	16 YEL
B3-CCY	16 YEL
B4-CCZ	16 YEL
C1-DDA	16 YEL
C2-TM	16 WHT
D1-LL	16 WHT
D2-LM	16 WHT
D3-LN	16 WHT
D4-HU	16 YEL
E1-MM	14 YEL
E2-IHS	16 YEL
F1-	
F2-	
G1-DL	16 YEL
G2-DM	16 WHT
G3-DJ	16 YEL
G4-DK	16 WHT
H1-AAA	16 WHT
H2-PJ	14 YEL
J1-	
J2-WH	14 YEL
J3-ER	16 YEL
J4-	
K1-FFD	12 YEL
K2-KA	10 YEL
K3-AAW	16 YEL



CONNECTS TO WIRE ASM-CHASSIS (LOCATED ON FLOOR BELOW LEFT SIDE OF DASH)

NOTES:

2 SEE WIRING DIAGRAM BODY FOR ADDITIONAL INFORMATION.

1 SEE MANUFACTURER'S DIAGRAM FOR ADDITIONAL INFORMATION.

CONNECTS TO HWH SLIDEOUT WIRE ASM-OR WIRE ASM-CHASSIS

1-BBN	16 YEL
2-BBM	16 YEL
3-	
4-DR	16 YEL
5-DU	16 YEL
6-DDA	16 YEL
7-	
8-CCZ	16 YEL
9-CCY	16 YEL

CONNECTS TO WIRE ASM-IP RIGHT (SHT 2, C-8) (LOCATED LEFT SIDE OF DASH)

1-MC	16 WHT
2-ML	16 YEL
3-MK	14 YEL
4-GT	16 YEL
5-LF	14 YEL
6-LE	14 YEL
7-DU	16 YEL
8-CCZ	16 YEL
9-DR	16 YEL

LEFT FRONT SPEAKER (LOCATED BEHIND SPEAKER)

KY 16 YEL
AT 16 WHT

RIGHT FRNT SPEAKER (LOCATED BEHIND SPEAKER)

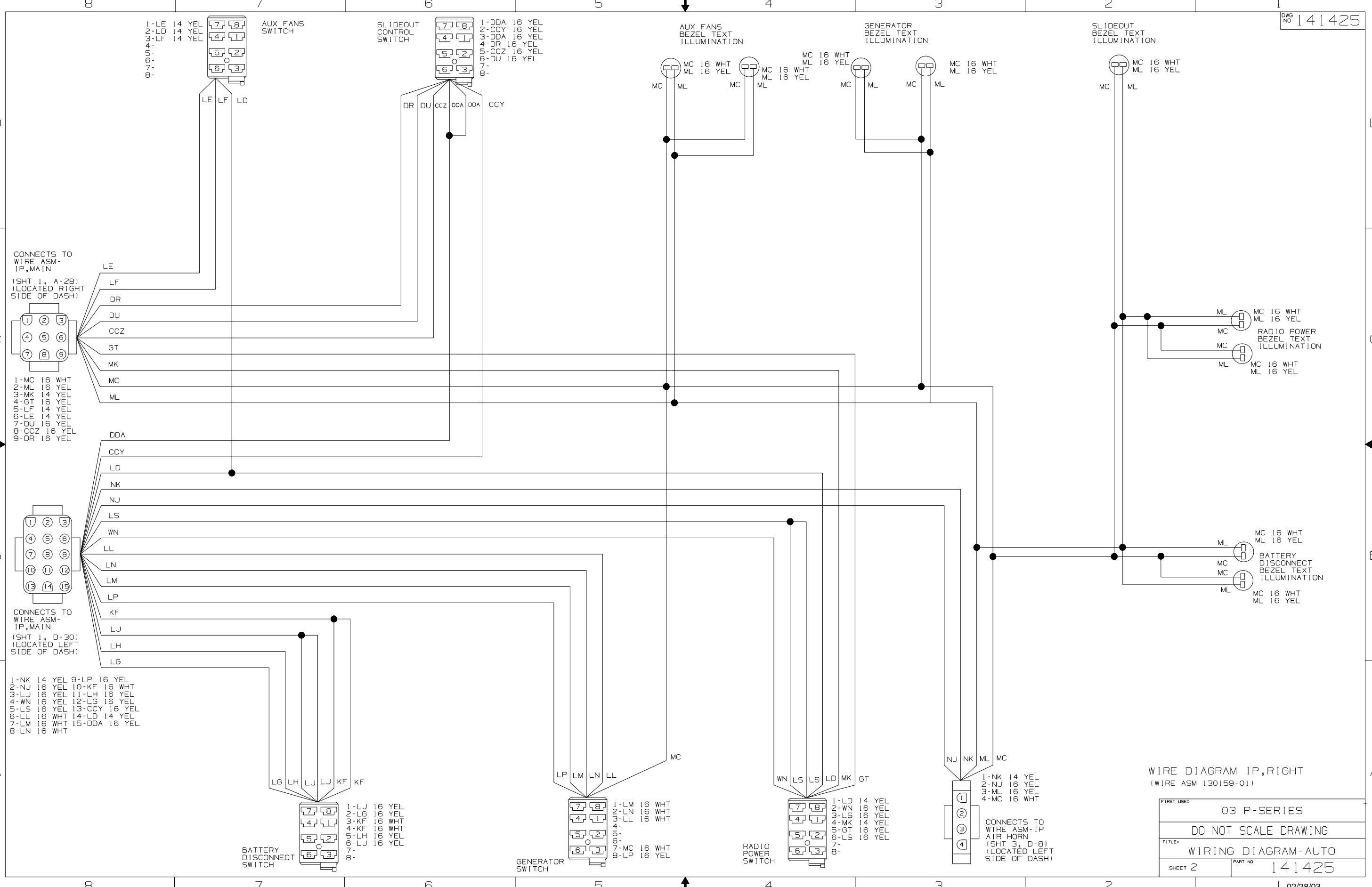
KW 16 YEL
AS 16 WHT

CONNECTS TO HEATER A/C CONTROLS

1-	
2-	
3-	
4-XA	12 YEL
5-G	12 YEL
6-WY	10 WHT

CONNECTS TO WIRE ASM-HEADLAMP RIGHT

A-MM	14 YEL
B-NH	14 YEL
C-NK	14 YEL



WIRE DIAGRAM IP,RIGHT
(WIRE ASM 130159-01)

FIRST USED	03 P-SERIES
TITLE	DO NOT SCALE DRAWING
TITLE	WIRING DIAGRAM-AUTO
SHEET 2	PART NO 141425

