



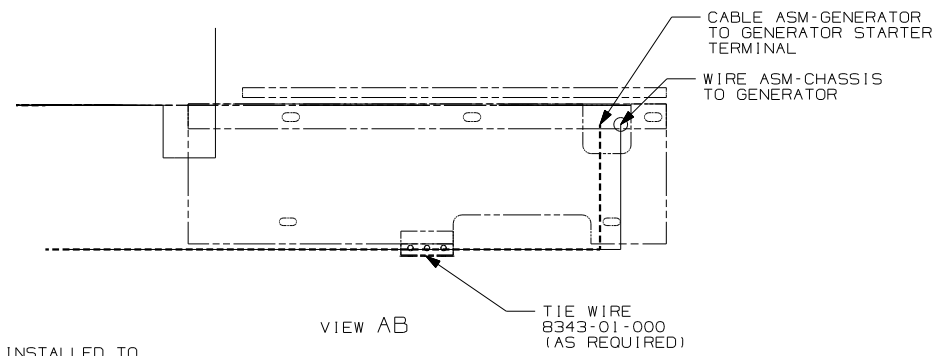
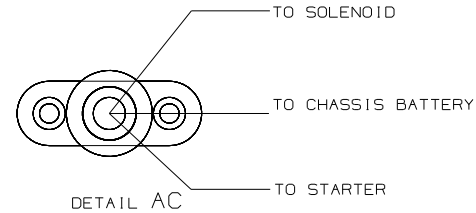
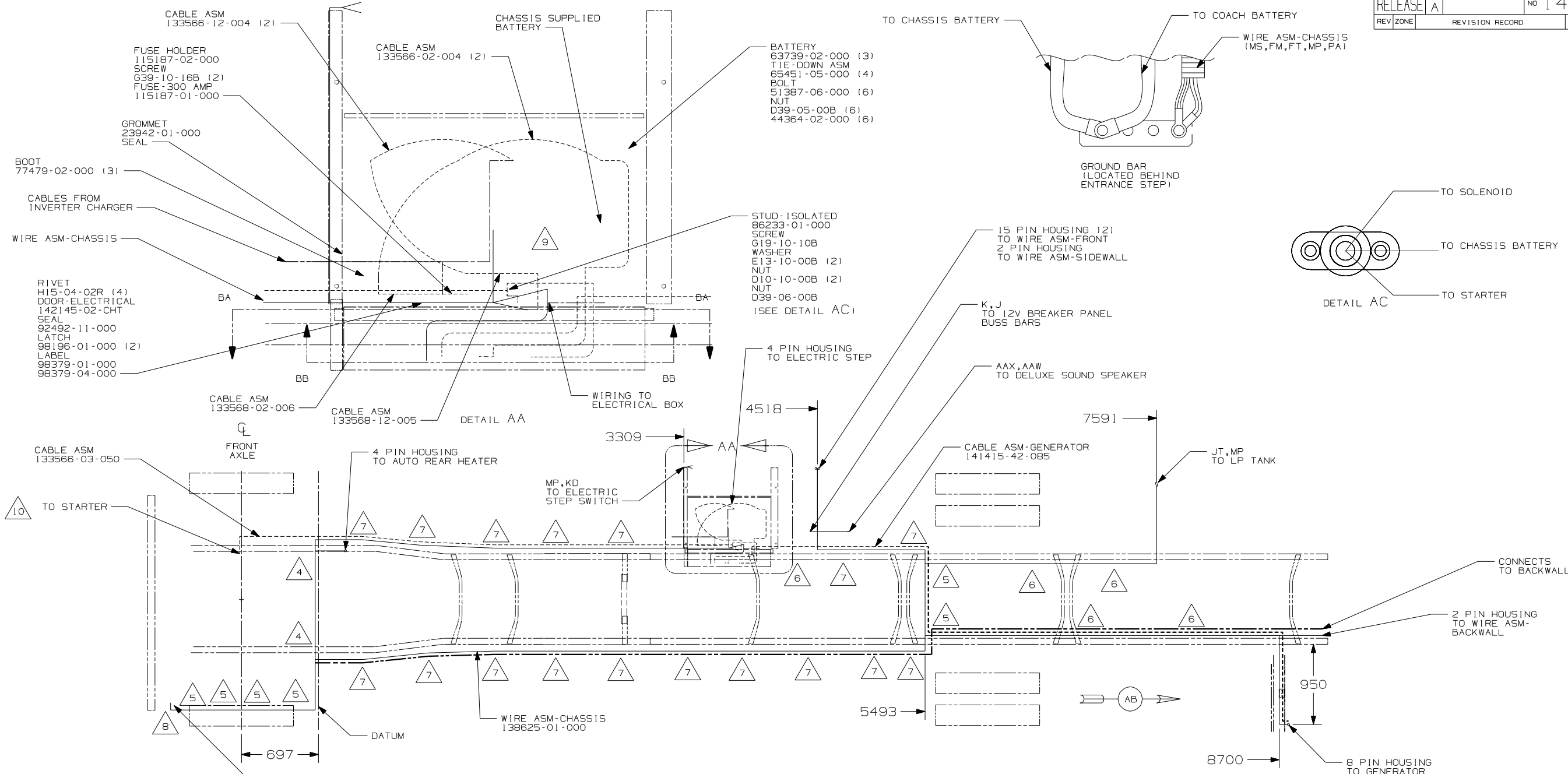
DANGER

Danger of electrical shock, burns or death. Always remove all power sources before attempting any repair, service or diagnostic work. Power can be present from shore power, generator, inverter or battery. All power sources must be disabled and secured before performing any service.



CAUTION

If you lack the skills, tools or equipment to perform diagnostic or repair work leave such work to an authorized Winnebago Industries dealer or other qualified shop.

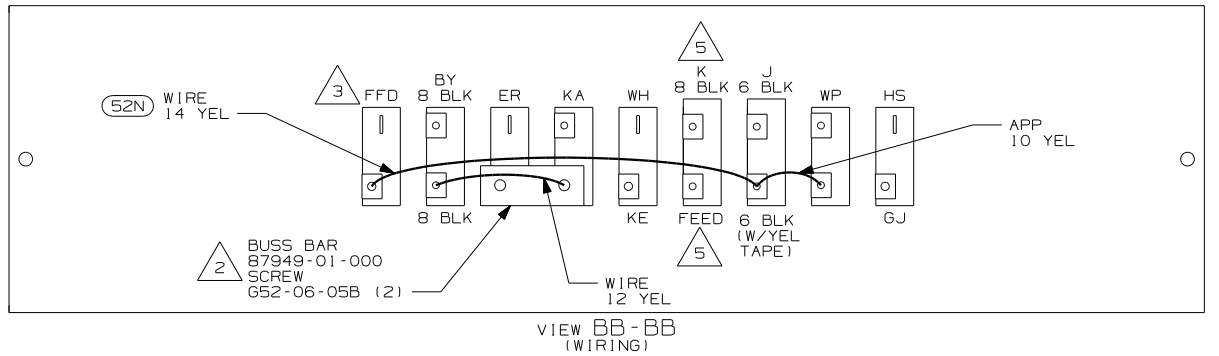
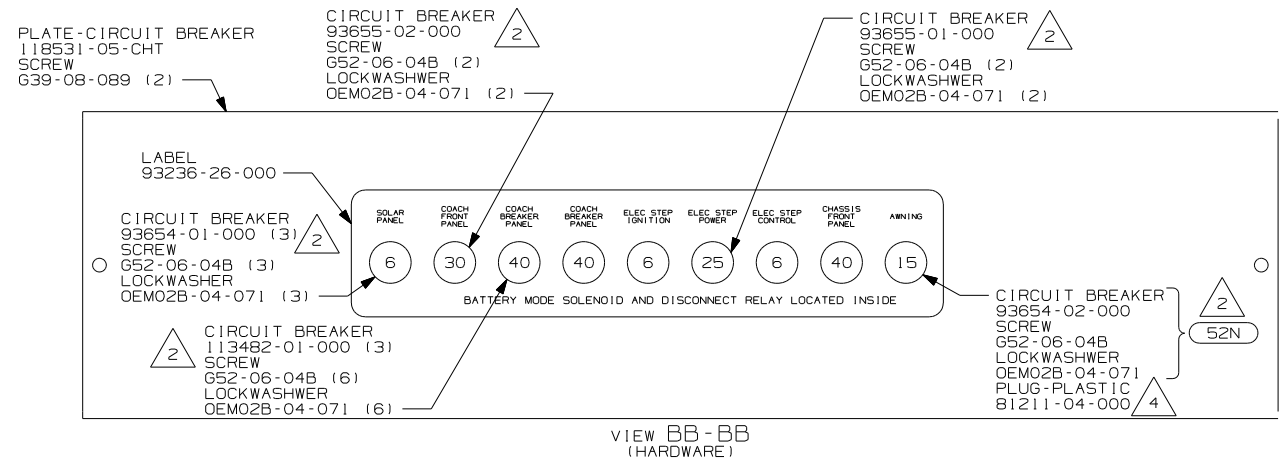
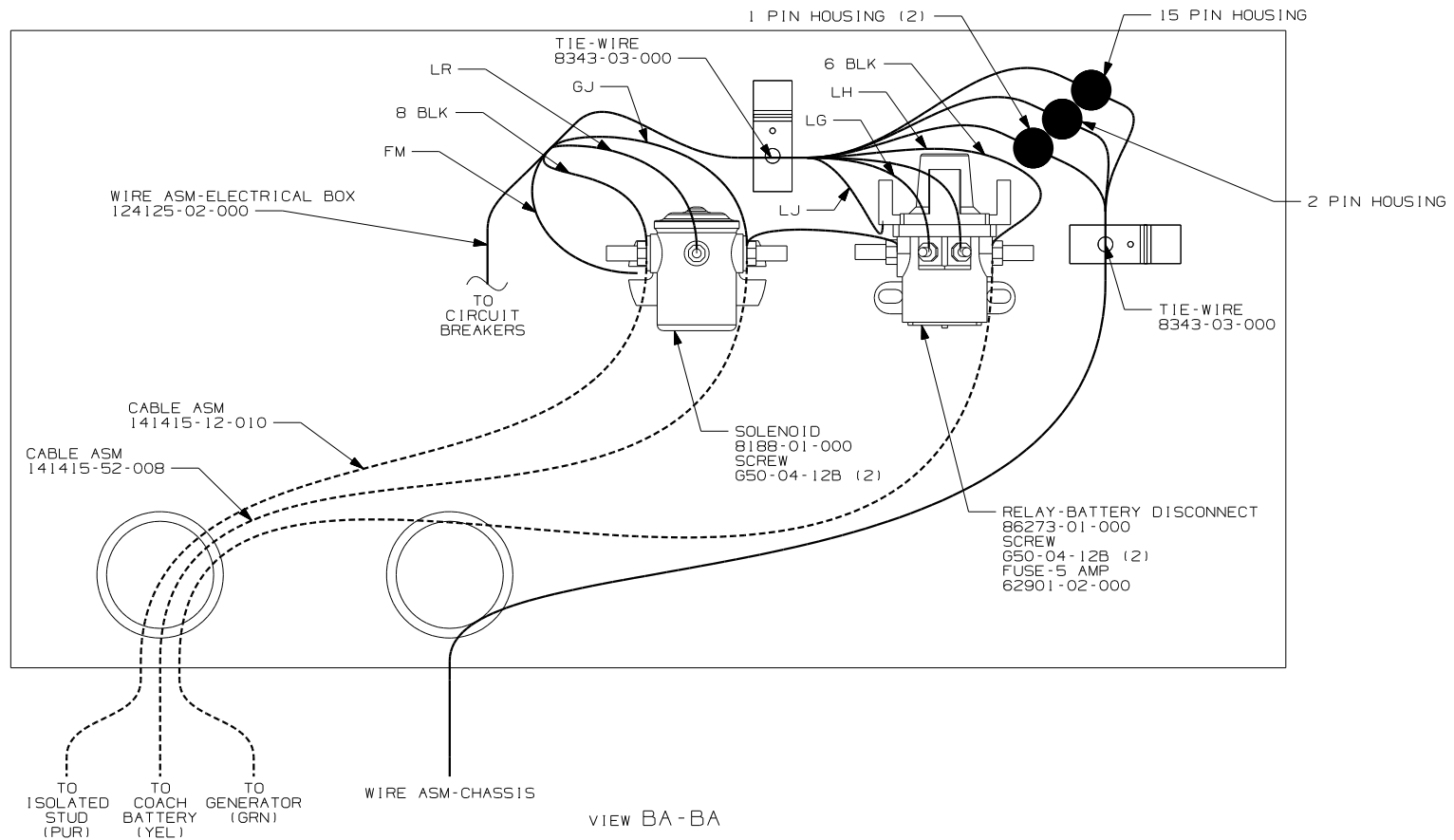


- BY TO PASS THRU STUD 2 PIN HOUSING TO WIRE ASM-HEADLAMP 4 PIN HOUSING TO WIRE ASM-AMPLIFIER 6 PIN HOUSING TO WIRE ASM-SLIDEOUT CONTROL THRU HOLE IN FLOOR 30 PIN HOUSING TO WIRE ASM-IP, MAIN THRU FLOOR
- 9 USE TWO NUTS HERE TO ACCOUNT FOR BATTERY HEIGHT DIFFERENCE.
 - 8 SEE WIRING INSTL-FRONT END FOR ADDITIONAL INFORMATION.
 - 7 CLAMP 10497-02-000 AND SCREW G39-08-000.
 - 6 CLAMP 83609-01-000 AND SCREW G39-08-000.
 - 5 CLAMP 83610-01-000, SCREW G11-10-16B.
 - 4 WIRE TIE 8343-04-000. FASTEN EVERY 600MM MINIMUM.
 - 3 ALL DIMENSIONS ARE FROM DATUM UNLESS OTHERWISE SPECIFIED.
 - 2 SECURE CONDUIT 41953-01-000, -02, AND -03 OVER ALL WIRES THAT CONTACT SHARP EDGES.
 - 1 LEGEND: — WINNEBAGO, - - - CABLE, - - - CHASSIS SUPPLIED.
- NOTES:

10 BATTERY CABLE MUST BE INSTALLED TO STARTER MOTOR BEFORE ENGINE WIRING HARNESS AND ROUTED IN SUCH A MANNER AS TO PREVENT ANY POSSIBLE DEGRADATION FROM THE EXHAUST SYSTEM.

IPR WORKHORSE 22,000
265 CODES/STANDARDS-CSA/CMVSS
1B1 CODES/STANDARDS USA

| | |
|--|-----------------------------------|
| 1B1 265 IPR | |
| WINNEBAGO COPYRIGHT 2003 WINNEBAGO INDUSTRIES, INC. | |
| DFT | ORIG. DATE |
| CHKR | ALL DIMENSIONS ARE IN MILLIMETERS |
| P.E. | |
| M.E. | FIRST USED |
| DSNR | 03 L39T |
| UNSPECIFIED TOLERANCES ARE: | MATERIAL: |
| WHOLE DIM (X) | : 1 |
| ONE-PLACE (X, X) | : 1.5 |
| TWO-PLACE (X, XX) | : 0.50 |
| ANGLE | : 1° |
| THIRD ANGLE PROJECTION | |
| DO NOT SCALE DRAWING | |
| TITLE: WIRING INSTL-CHASSIS | |
| SHEET 1 OF 2 | PART NO 142384 |
| REF: 138626 1 03/03/03 | |



- NOTES:
- 4 WITHOUT (52N)
 - 3 TIE BACK TO LOOM WITHOUT (52N)
 - 2 ADD LOCK WASHER OME02B-04-071 1 PER SCREW.
 - 1 SECURE WITH SOLENOID MOUNTING SCREW.
 - 5 FROM WIRE ASM-CHASSIS

- (52N) AWNING - PATIO, ELECTRIC
- (265) CODES/STANDARDS-CSA/CMVSS
- (1B1) CODES/STANDARDS USA

| | |
|------------|----------------------|
| FIRST USED | 03 L39T |
| TITLE | DO NOT SCALE DRAWING |
| | WIRING INSTL-CHASSIS |
| SHEET 2 | PART NO 142384 |