



DANGER

Danger of electrical shock, burns or death. Always remove all power sources before attempting any repair, service or diagnostic work. Power can be present from shore power, generator, inverter or battery. All power sources must be disabled and secured before performing any service.



CAUTION

If you lack the skills, tools or equipment to perform diagnostic or repair work leave such work to an authorized Winnebago Industries dealer or other qualified shop.

DRAWING NO.	FEATURES
142396-14	1B1 78J 13X
142396-18	265 78J 13X

RELEASE	REV/DATE	DWG NO
	A	142396
REV ZONE	REVISION RECORD	DATE DFR-ORIG

(BLK) 2900 DROP
TO RCP-BLANK, MICROWAVE
(YEL-2) 2800 DROP
TO REFRIGERATOR
(YEL) 2700 DROP
TO VACUUM (22T)
(GLD) 3800 DROP
TO WASHER/DRYER
(WHT) 6900 LOOP
TO WATER HEATER SWITCH
(BRN) 7500 DROP
THRU RCP-BLANK, LAV
THRU GF1
TO RECP, BATH
(BLU) 11100 DROP
THRU GF1
THRU EXTERIOR RECP
THRU EXT ENT CTR RECP
TO GALLEY RECP.
(BRN) 1200 DROP
TO RECP-BLANK, LAV

INVERTER/CHARGER
113685-01-000
NUT
D39-04-00B (4)
WIRE ASM-GROUNF
136145-01-010

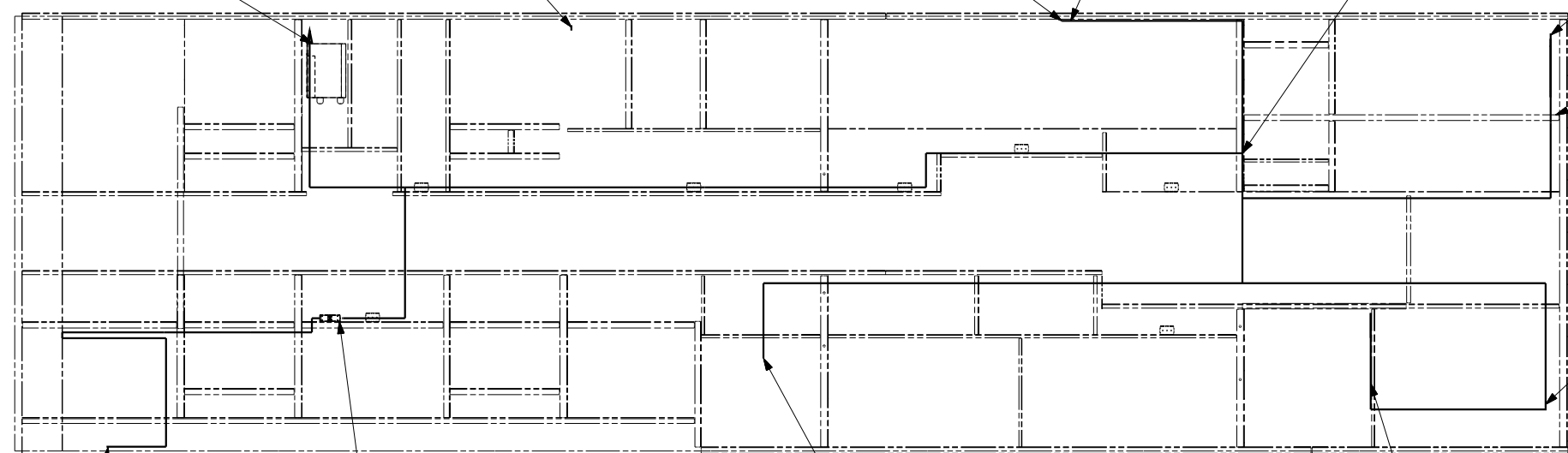
(BLU) 800 LOOP
THRU EXT ENT CENTER
(FROM ABOVE FLOOR)

(PUR) 600 DROP TO
110V CONNECTION
FROM RECP-DESK

TO CENTRAL A/C UNIT
(SEE A/C INSTALLATION
FOR WIRING INFORMATION)

PLATE
106597-01-000
CONNECTOR
93256-02-000 (2)
SCREW
G39-08-12B (4)

(PUR) 4400 DROP
FROM LOAD CENTER
THRU RCP-BLANK, REAR TV
THRU RECP-REAR TV
THRU RECP-DESK
(GLD)
(BLK)
(BLU)
(BRN)
(RED)
(GRN)
(YEL)
(YEL-2)
1500 DROP
TO LOAD CENTER

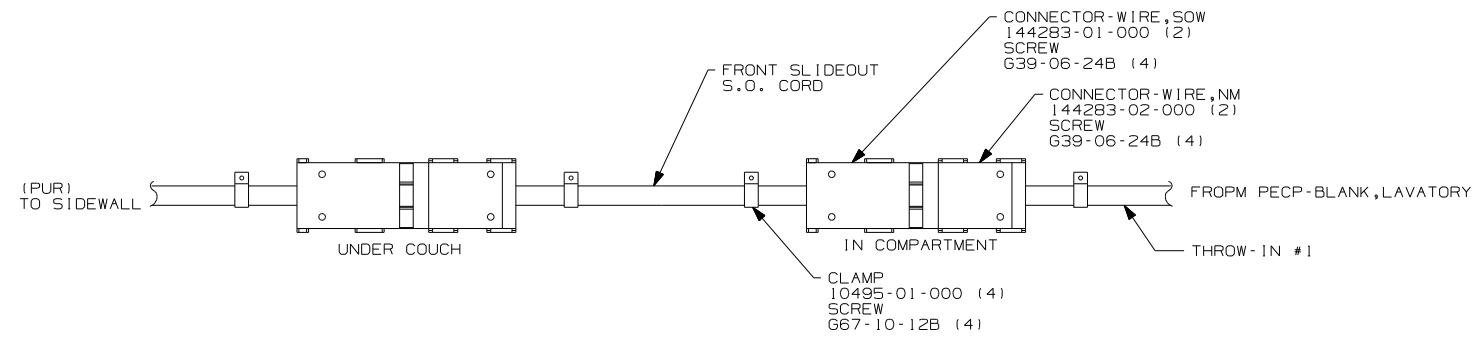


(BRN) TO
110V CONNECTION

110V CONNECTION
(SEE DETAIL AA)

(WHT)
TO WATER HEATER (1B2)

TO ATS



DETAIL AA
(BRN)

- (13X) INVERTER/CHARGER 2.0 KW
- (78J) ELECTRICAL SYSTEM 50-AMP
- (1B2) WATER HTR-10 GAL/ELEC/LP/MTRAIID
- (21M) WASHER/DRYER PREP
- (22T) VACUUM SYSTEM-CENTRAL
- (265) CODES/STANDARDS-CSA/CMVSS
- (1B1) CODES/STANDARDS USA

1B1 265 78J 13X



DFTR	ORIG. DATE
CHKR	ALL DIMENSIONS ARE IN MILLIMETERS
P.E.	FIRST USED
M.E.	03 L36W
DSNR	
UNSPECIFIED TOLERANCES ARE:	MATERIAL:
HOLE DIM (X)	
ONE-PLACE (X.X)	
TWO-PLACE (X.XX)	
ANGLE	
THIRD ANGLE PROJECTION	

DO NOT SCALE DRAWING

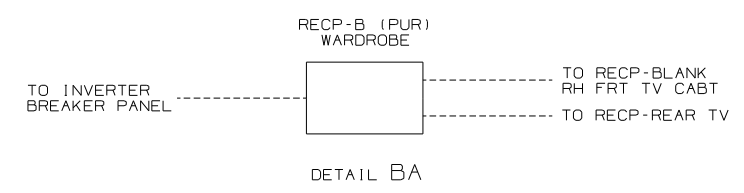
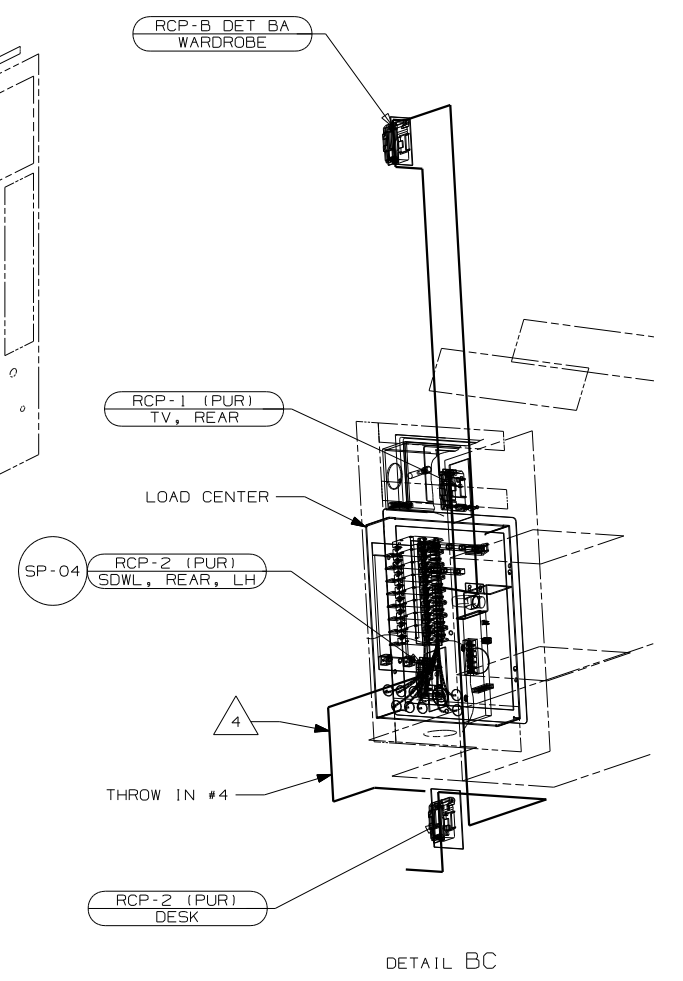
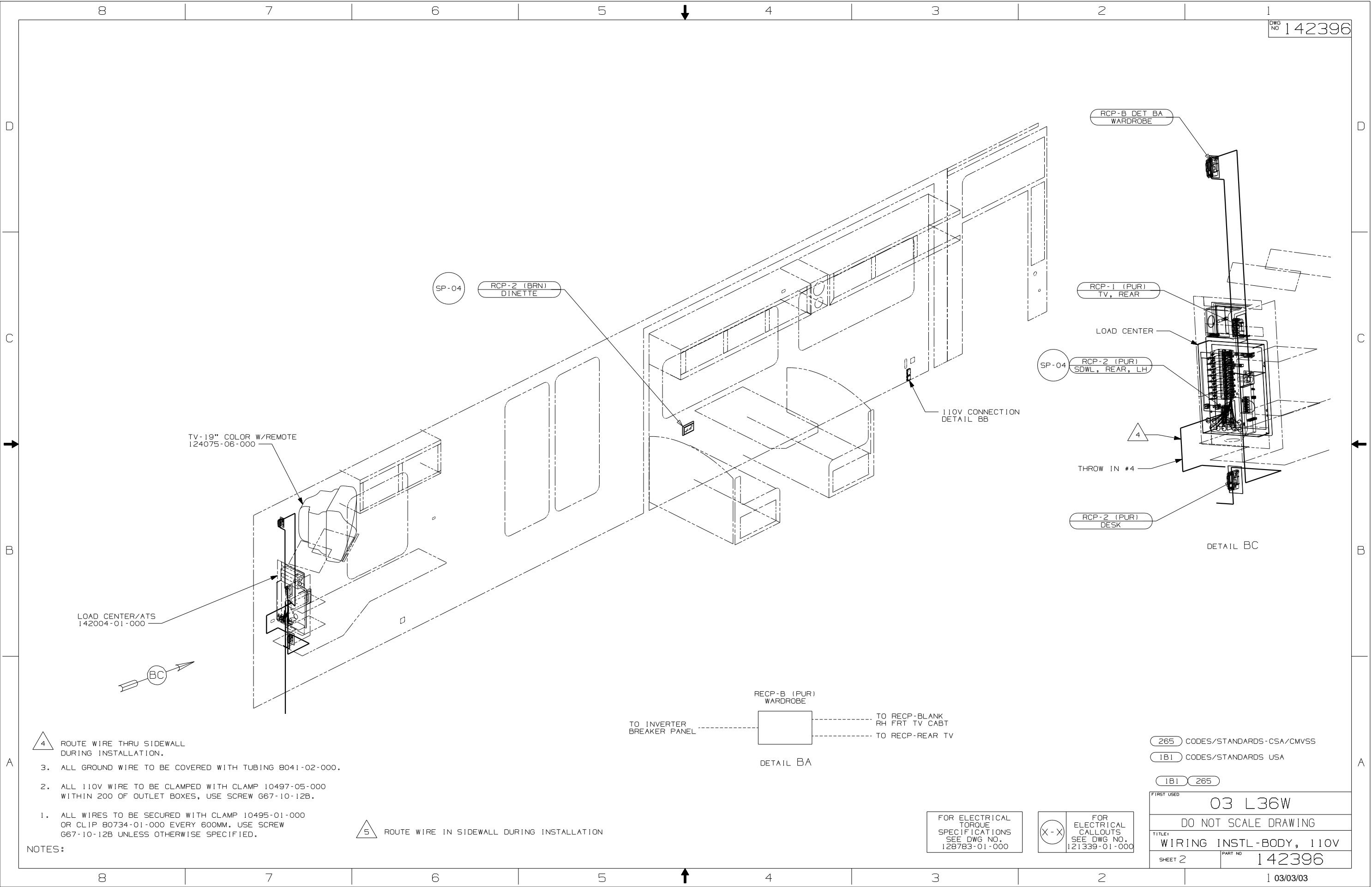
TITLE:	WIRING INSTL-BODY, 110V
SHEET 1 of 4	PART NO 142396

- 4 WIRES TO PASS THROUGH FLOOR IN THIS AREA.
- ALL GROUND WIRE TO BE COVERED WITH TUBING 8041-02-000.
 - ALL 110V WIRE TO BE CLAMPED WITH CLAMP 10497-05-000 WITHIN 200 OF OUTLET BOXES, USE SCREW G67-10-12B.
 - ALL WIRES TO BE SECURED WITH CLAMP 10495-01-000 OR CLIP 80734-01-000 EVERY 600MM. USE SCREW G67-10-12B UNLESS OTHERWISE SPECIFIED.

NOTES:

FOR ELECTRICAL
TORQUE
SPECIFICATIONS
SEE DWG NO.
128783-01-000

FOR
ELECTRICAL
CALLOUTS
SEE DWG NO.
121339-01-000



- NOTES:
- 1. ALL WIRES TO BE SECURED WITH CLAMP 10495-01-000 OR CLIP 80734-01-000 EVERY 600MM. USE SCREW G67-10-12B UNLESS OTHERWISE SPECIFIED.
 - 2. ALL 110V WIRE TO BE CLAMPED WITH CLAMP 10497-05-000 WITHIN 200 OF OUTLET BOXES, USE SCREW G67-10-12B.
 - 3. ALL GROUND WIRE TO BE COVERED WITH TUBING 8041-02-000.

△ ROUTE WIRE IN SIDEWALL DURING INSTALLATION

FOR ELECTRICAL TORQUE SPECIFICATIONS SEE DWG NO. 128783-01-000

⊗ FOR ELECTRICAL CALLOUTS SEE DWG NO. 121339-01-000

265 CODES/STANDARDS-CSA/CMVSS
 1B1 CODES/STANDARDS USA
 1B1 265

FIRST USED
03 L36W

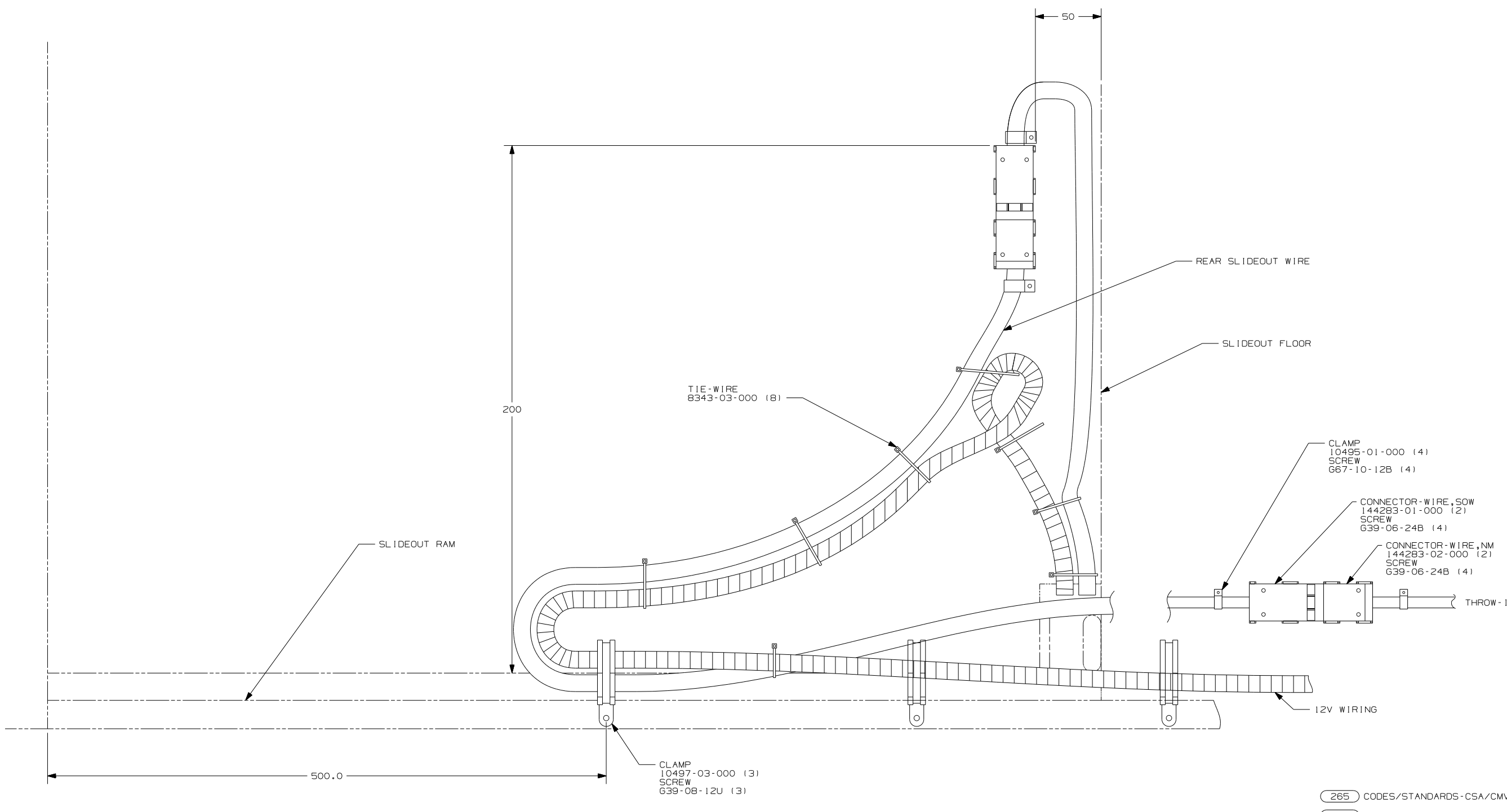
DO NOT SCALE DRAWING

TITLE:
WIRING INSTL-BODY, 110V

SHEET 2 PART NO
142396

1 03/03/03

FROM XXXXX



VIEW DA-DA

NOTES:

1. ALL WIRES TO BE SECURED WITH CLAMP 10495-01-000 OR CLIP 80734-01-000 EVERY 600MM. USE SCREW 667-10-12B UNLESS OTHERWISE SPECIFIED.

FOR ELECTRICAL TORQUE SPECIFICATIONS SEE DWG NO. 128783-01-000

FOR ELECTRICAL CALLOUTS SEE DWG NO. 121339-01-000

265	CODES/STANDARDS-CSA/CMVSS
1B1	CODES/STANDARDS USA
1B1	265

FIRST USED	03 L36W
TITLE	DO NOT SCALE DRAWING
TITLE	WIRING INSTL-BODY, 110V
SHEET 4	PART NO 142396