



DANGER

Danger of electrical shock, burns or death. Always remove all power sources before attempting any repair, service or diagnostic work. Power can be present from shore power, generator, inverter or battery. All power sources must be disabled and secured before performing any service.

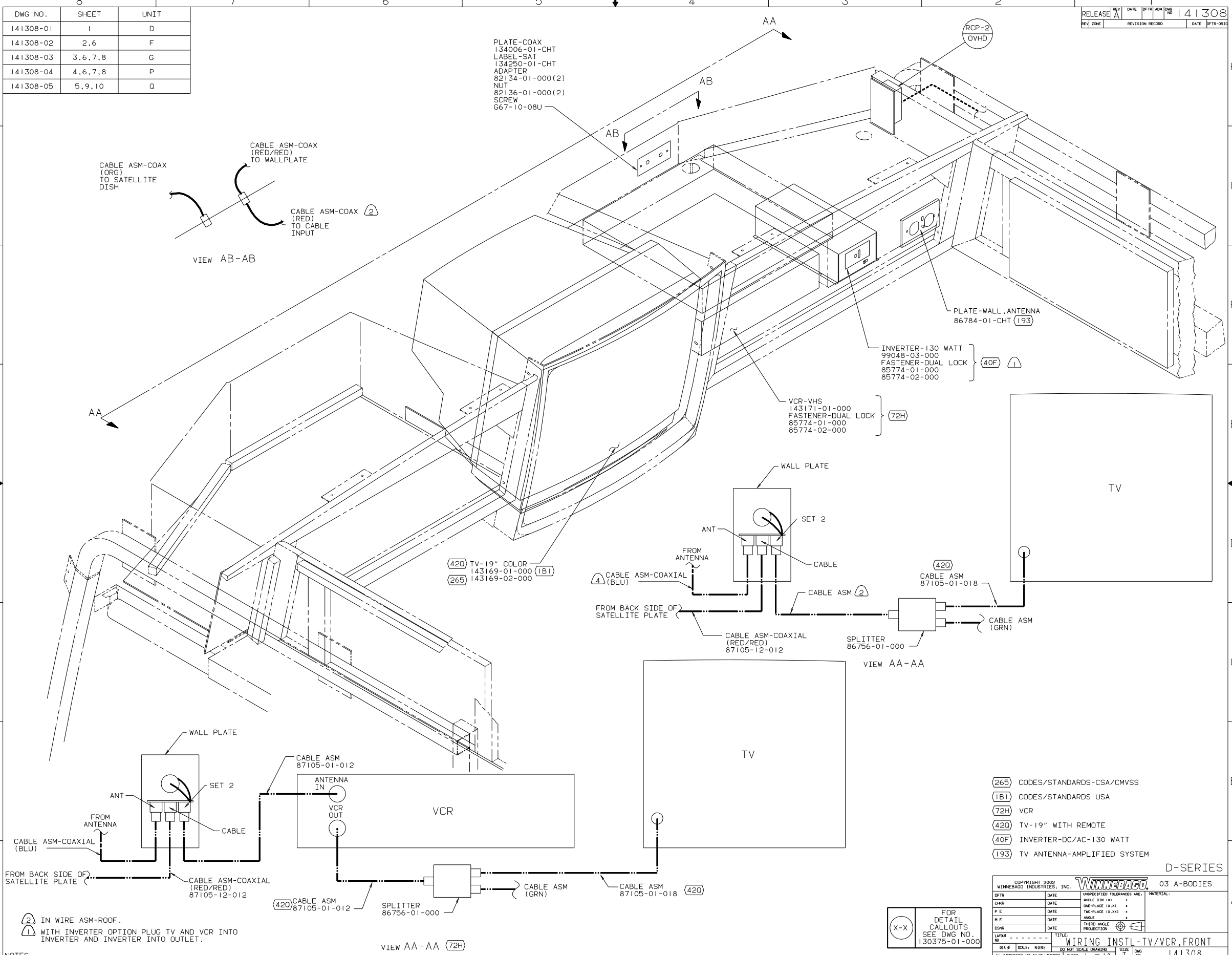


CAUTION

If you lack the skills, tools or equipment to perform diagnostic or repair work leave such work to an authorized Winnebago Industries dealer or other qualified shop.

DWG NO.	SHEET	UNIT
141308-01	I	D
141308-02	2,6	F
141308-03	3,6,7,8	G
141308-04	4,6,7,8	P
141308-05	5,9,10	Q

RELEASE	REV	DATE	BY	CHK	DWG NO
	A				141308



NOTES:

(2) IN WIRE ASM-ROOF.

(1) WITH INVERTER OPTION PLUG TV AND VCR INTO INVERTER AND INVERTER INTO OUTLET.

- (265) CODES/STANDARDS-CSA/CMVSS
- (1B1) CODES/STANDARDS USA
- (72H) VCR
- (420) TV-19" WITH REMOTE
- (40F) INVERTER-DC/AC-130 WATT
- (193) TV ANTENNA-AMPLIFIED SYSTEM

FOR
DETAIL
CALLOUTS
SEE DWG NO.
130375-01-000

COPYRIGHT 2002 WINNEBAGO INDUSTRIES, INC. WINNEBAGO		D-SERIES 03 A-BODIES	
DFTR	DATE	UNSPECIFIED TOLERANCES ARE:	MATERIAL:
CHFR	DATE	WHOLE DIM (XX)	+
P E	DATE	ONE-PLACE (X.X)	+
M E	DATE	TWO-PLACE (X.XX)	+
DNFR	DATE	THIRD ANGLE PROJECTION	
LAYOUT NO	TITLE	WIRING INSTL-TV/VCR, FRONT	
DIA #	SCALE: NONE	DO NOT SCALE DRAWING	SHEET NO 141308
ALL DIMENSIONS ARE IN MILLIMETERS		SHEET 1 OF 10	DWG NO 141308