



DANGER

Danger of electrical shock, burns or death. Always remove all power sources before attempting any repair, service or diagnostic work. Power can be present from shore power, generator, inverter or battery. All power sources must be disabled and secured before performing any service.

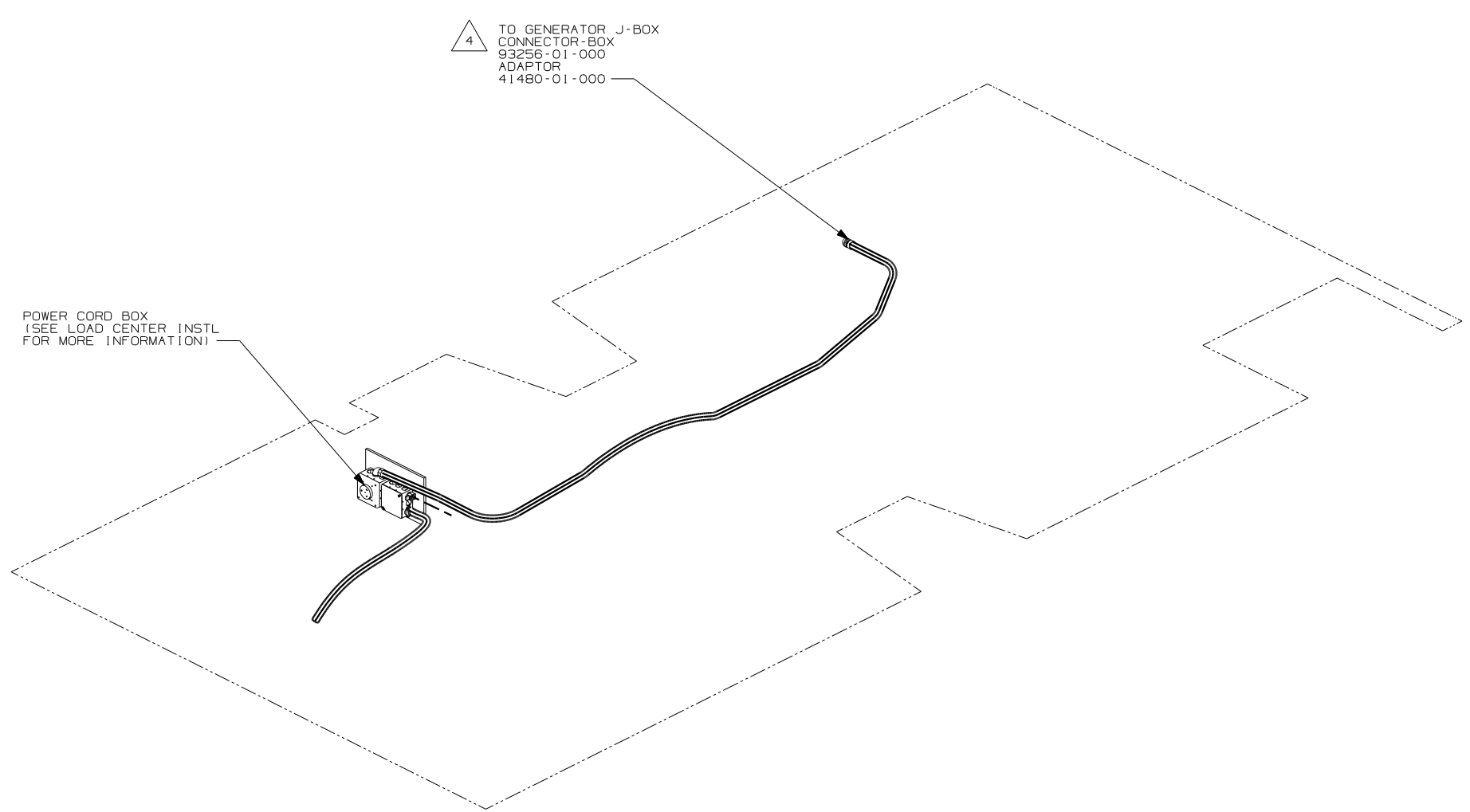


CAUTION

If you lack the skills, tools or equipment to perform diagnostic or repair work leave such work to an authorized Winnebago Industries dealer or other qualified shop.

DWG NO	FEATURE
141958-01	
141958-11	(1B1) (12D)
141958-15	(265) (12D)

RELEASE	REV DATE	DWG NO
A		141958
REV ZONE	REVISION RECORD	DATE



△ TO GENERATOR J-BOX
CONNECTOR-BOX
93256-01-000
ADAPTOR
41480-01-000

POWER CORD BOX
(SEE LOAD CENTER INSTL
FOR MORE INFORMATION)

- (12D) ELECTRICAL SYSTEM 30 AMP
- (40N) GEN-4.0KW-ONAN-GAS-MICROLITE
- (265) CODES/STANDARDS-CSA/CMVSS
- (1B1) CODES/STANDARDS USA

(1B1) (265) (12D)



DFT	ORIG. DATE
CHKR	ALL DIMENSIONS ARE IN MILLIMETERS
P.E.	
M.E.	FIRST USED
DSNR	03 324F

UNSPECIFIED TOLERANCES ARE:	MATERIAL:
WHOLE DIM (X) : 1	
ONE-PLACE (X.X) : 1.5	
TWO-PLACE (X.XX) : 0.50	
ANGLE : 1°	

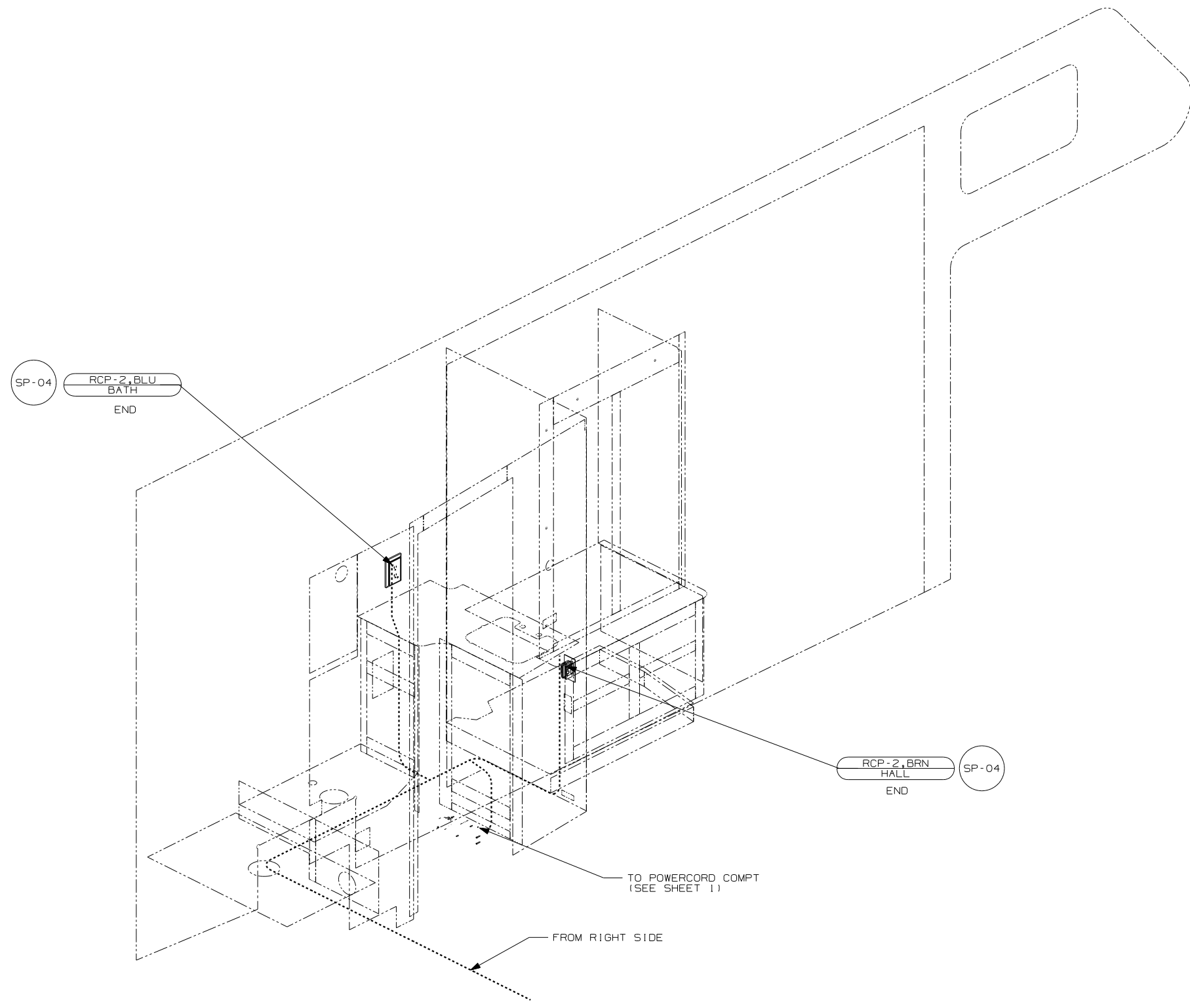
THIRD ANGLE PROJECTION

DO NOT SCALE DRAWING	
TITLE:	WIRING INSTL-BODY, 110V
SHEET 1 OF 3	PART NO 141958

- △ SEE GENERATOR INSTALLATION FOR ADDITIONAL INFORMATION.
- ALL GROUND WIRES TO BE COVERED WITH TUBING 8041-02-000.
 - ALL 110V WIRES ARE TO BE CLAMPED WITH CLAMP 10497-05-000 WITHIN 200 OF OUTLET BOXES. USE SCREW G67-10-12B.
 - ALL WIRES TO BE SECURED WITH CLAMP 10495-01-000 OR CLIP B0734-01-000 EVERY 600MM. USE SCREW G67-10-12B UNLESS OTHERWISE SPECIFIED.

FOR ELECTRICAL TORQUE SPECIFICATIONS SEE DWG NO. 128783-01-000

FOR ELECTRICAL CALLOUTS SEE DWG NO. 121339-01-000



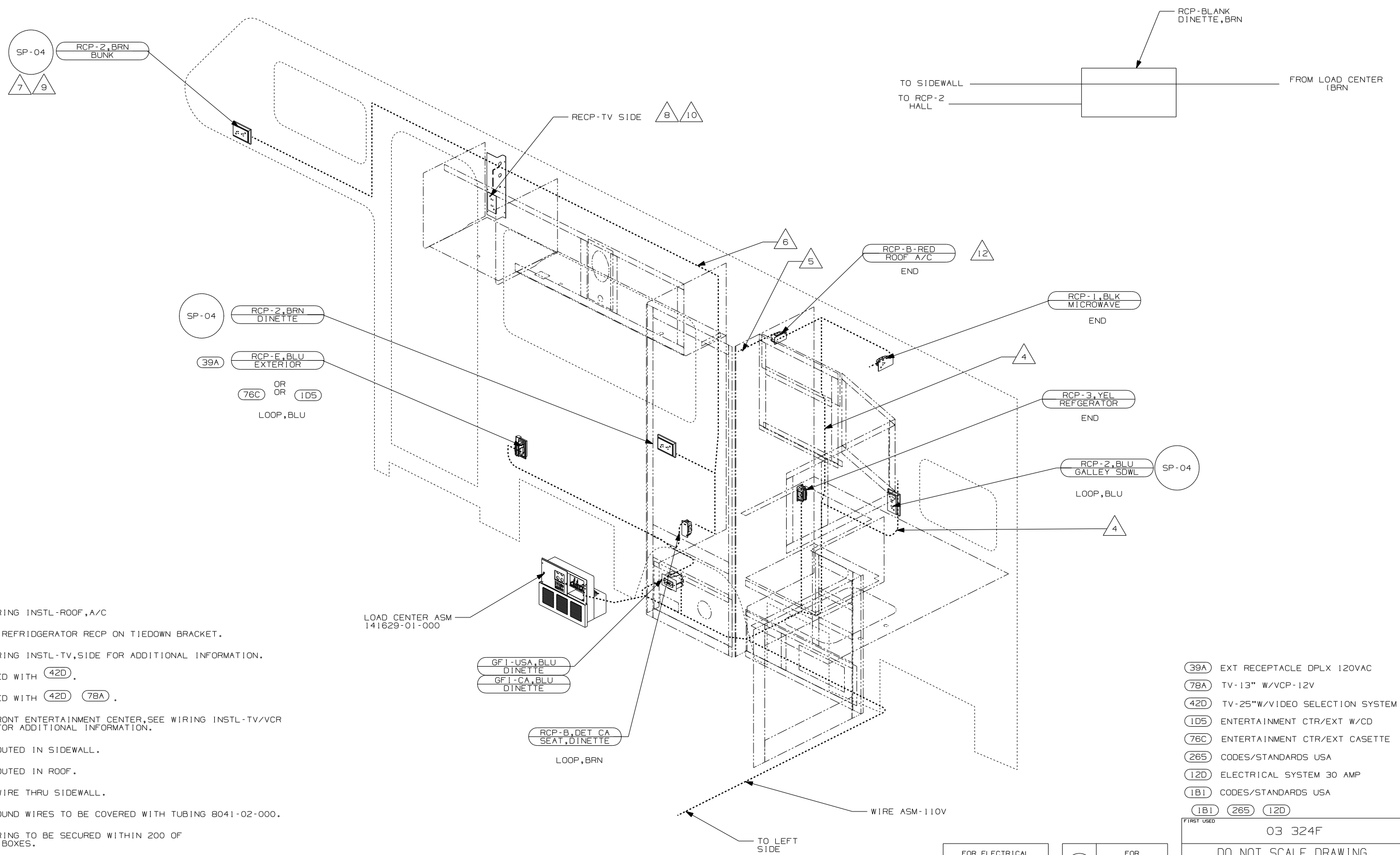
- NOTES:
1. ALL WIRES TO BE CLAMPED WITH CLAMP 10495-01-000 OR CLIP 80734-01-000 EVERY 1200. USE SCREW G67-10-12B UNLESS OTHERWISE SPECIFIED.
 2. ALL WIRING TO BE SECURED WITHIN 200 OF OUTLET BOXES.
 3. ALL GROUND WIRES TO BE COVERED WITH TUBING 8041-02-000.

FOR ELECTRICAL TORQUE SPECIFICATIONS SEE DWG NO. 128783-01-000

FOR ELECTRICAL CALLOUTS SEE DWG NO. 121339-01-000

- (265) CODES/STANDARDS - CSA/CMVSS
- (120) ELECTRICAL SYSTEM 30 AMP
- (1B1) CODES/STANDARDS USA
- (1B1) (265) (120)

FIRST USED	03 324F
DO NOT SCALE DRAWING	
TITLE:	WIRING INSTL-BODY, 110V
SHEET 2	PART NO 141958



- △12 SEE WIRING INSTL-ROOF, A/C
- △11 LOCATE REFRIDGERATOR RECP ON TIEDOWN BRACKET.
- △10 SEE WIRING INSTL-TV, SIDE FOR ADDITIONAL INFORMATION.
- △9 NOT USED WITH (42D).
- △8 NOT USED WITH (42D) (78A).
- △7 WITH FRONT ENTERTAINMENT CENTER, SEE WIRING INSTL-TV/VCR FRONT FOR ADDITIONAL INFORMATION.
- △6 WIRE ROUTED IN SIDEWALL.
- △5 WIRE ROUTED IN ROOF.
- △4 ROUTE WIRE THRU SIDEWALL.

3. ALL GROUND WIRES TO BE COVERED WITH TUBING 8041-02-000.
2. ALL WIRING TO BE SECURED WITHIN 200 OF OUTLET BOXES.
1. ALL WIRES TO BE CLAMPED WITH CLAMP 10495-01-000 OR CLIP 80734-01-000 EVERY 1200. USE SCREW G67-10-12B UNLESS OTHERWISE SPECIFIED.

NOTES:

LOAD CENTER ASM
141629-01-000

GFI-USA, BLU
DINETTE

GFI-CA, BLU
DINETTE

RCP-B, DET CA
SEAT, DINETTE

LOOP, BRN

FOR ELECTRICAL
TORQUE
SPECIFICATIONS
SEE DWG NO.
128783-01-000

FOR ELECTRICAL
CALLOUTS
SEE DWG NO.
121339-01-000

- (39A) EXT RECEPTACLE DPLX 120VAC
- (78A) TV-13" W/VCP-12V
- (42D) TV-25"W/VIDEO SELECTION SYSTEM
- (1D5) ENTERTAINMENT CTR/EXT W/CD
- (76C) ENTERTAINMENT CTR/EXT CASSETTE
- (265) CODES/STANDARDS USA
- (12D) ELECTRICAL SYSTEM 30 AMP
- (1B1) CODES/STANDARDS USA
- (1B1) (265) (12D)

FIRST USED	03 324F
DO NOT SCALE DRAWING	
TITLE:	WIRING INSTL-BODY, 110V
SHEET 3	PART NO 141958