



DANGER

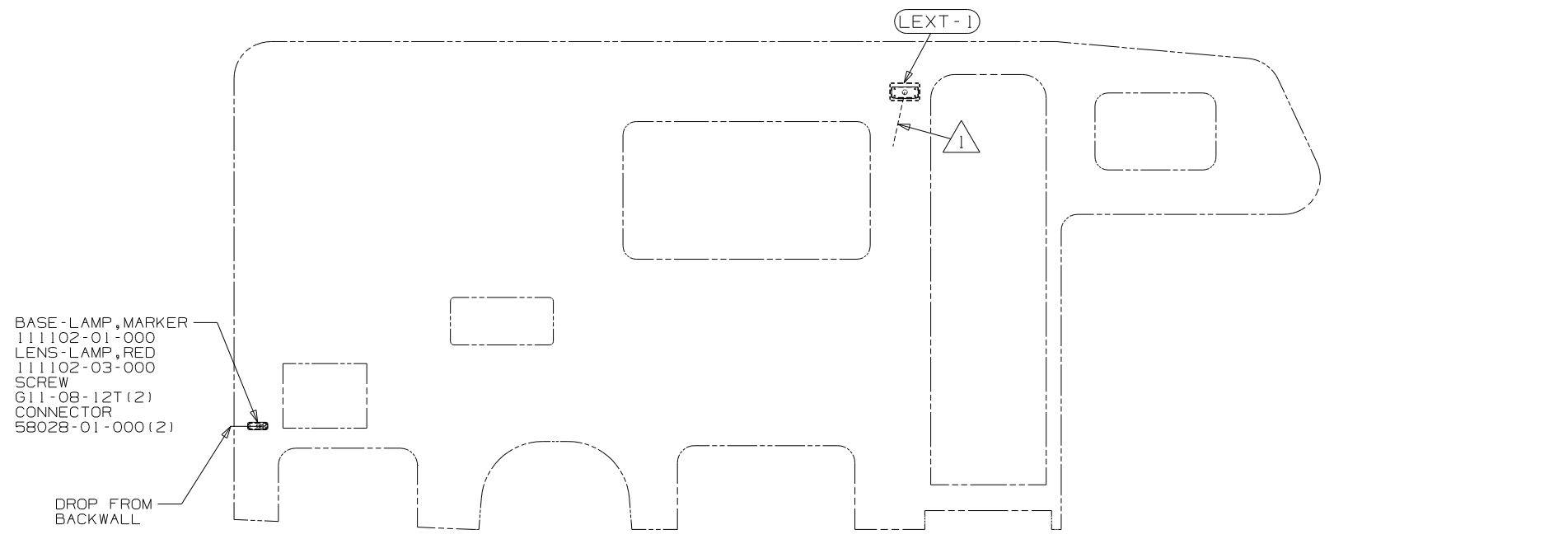
Danger of electrical shock, burns or death. Always remove all power sources before attempting any repair, service or diagnostic work. Power can be present from shore power, generator, inverter or battery. All power sources must be disabled and secured before performing any service.



CAUTION

If you lack the skills, tools or equipment to perform diagnostic or repair work leave such work to an authorized Winnebago Industries dealer or other qualified shop.

8 7 6 5 4 3 2

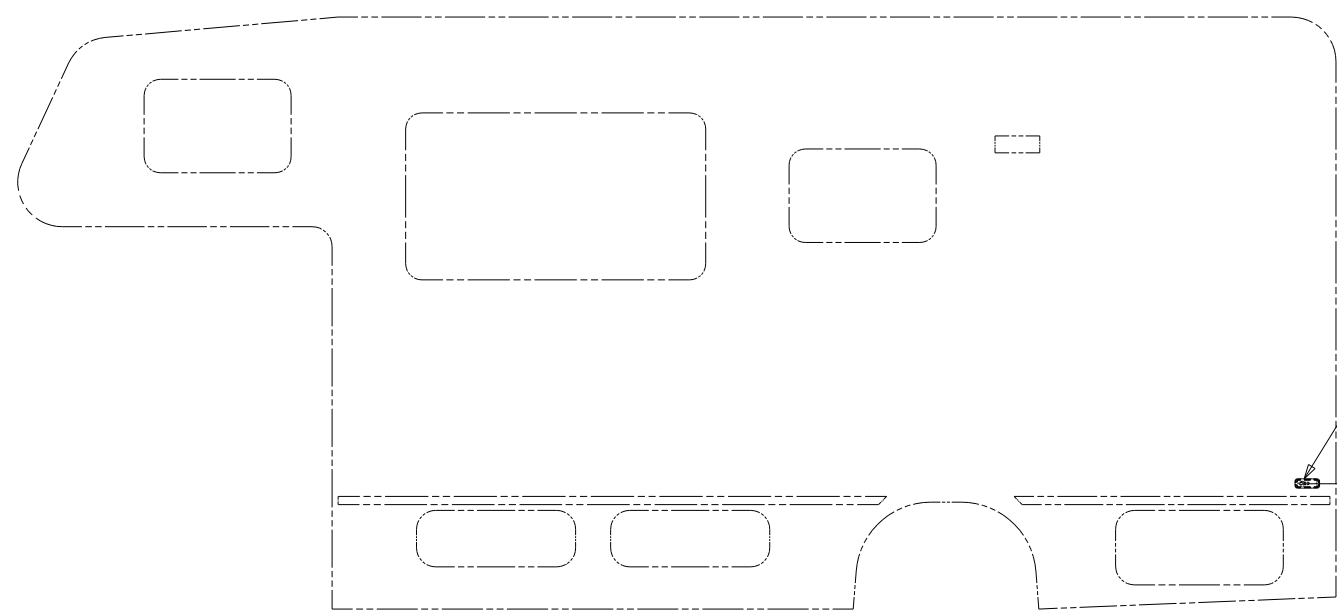


BASE-LAMP, MARKER
111102-01-000
LENS-LAMP, RED
111102-03-000
SCREW
G11-08-12T (2)
CONNECTOR
58028-01-000 (2)

DROP FROM
BACKWALL

(LEXT-1)

1



BASE-LAMP, MARKER
111102-01-000
LENS-LAMP, RED
111102-03-000
SCREW
G11-08-12T (2)
CONNECTOR
58028-01-000 (2)

DROP FROM
BACKWALL

(265) CODES/STANDARDS CSA
(1B1) CODES/STANDARDS USA

(1B1) (265)



DFTR	ORIG. DATE
CHKR	ALL DIMENSIONS ARE IN MILLIMETERS
P.E.	FIRST USED
M.E.	02 221B
DSNR	

UNSPECIFIED TOLERANCES ARE:	MATERIAL:
HOLE DIM (X) :	
ONE-PLACE (X.X) :	
TWO-PLACE (X.XX) :	
ANGLE :	
THIRD ANGLE PROJECTION	

DO NOT SCALE DRAWING

TITLE:	WIRING INSTL-EXTERIOR LAMPS
SHEET 1 OF 2	PART NO 139484

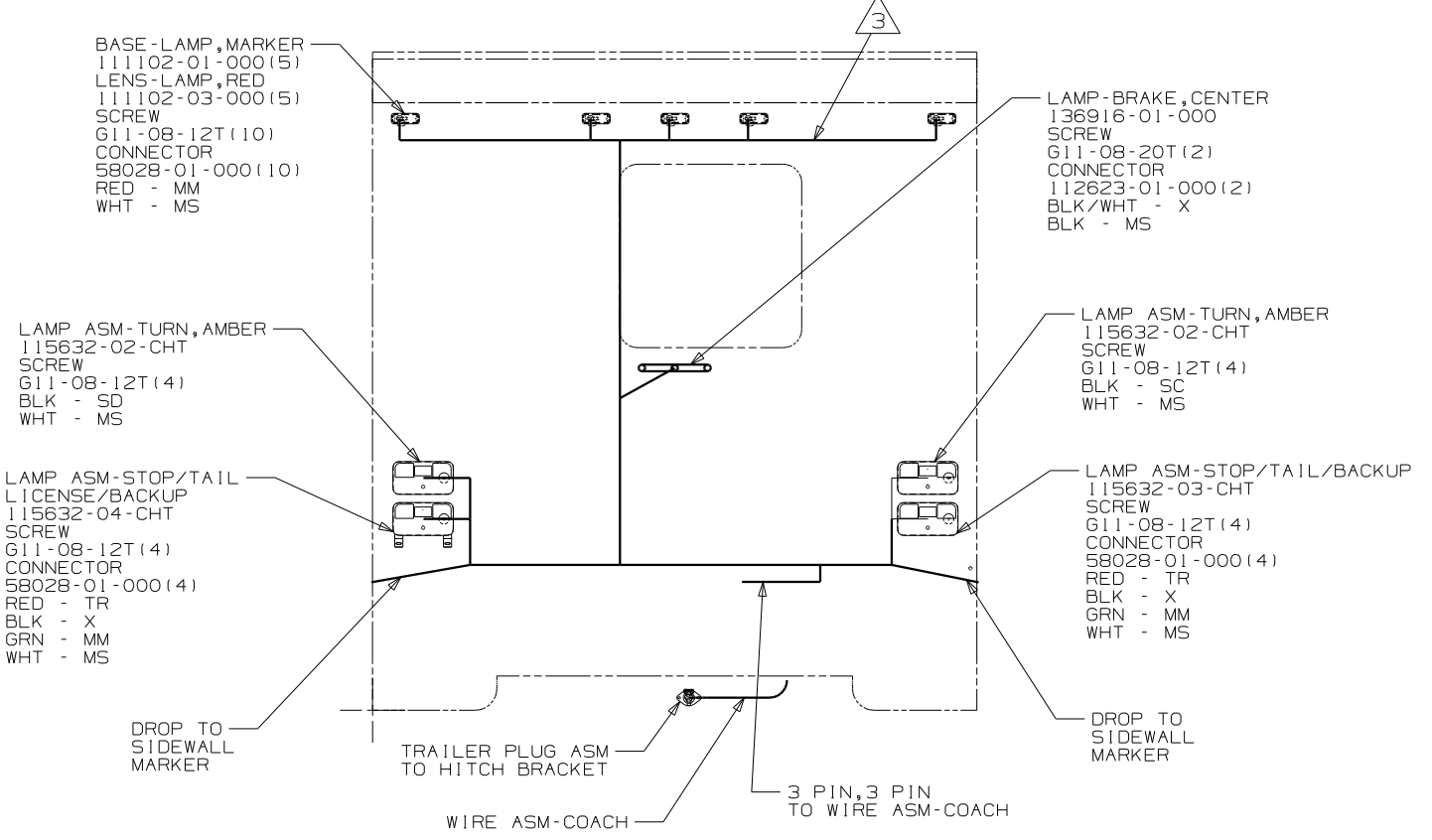
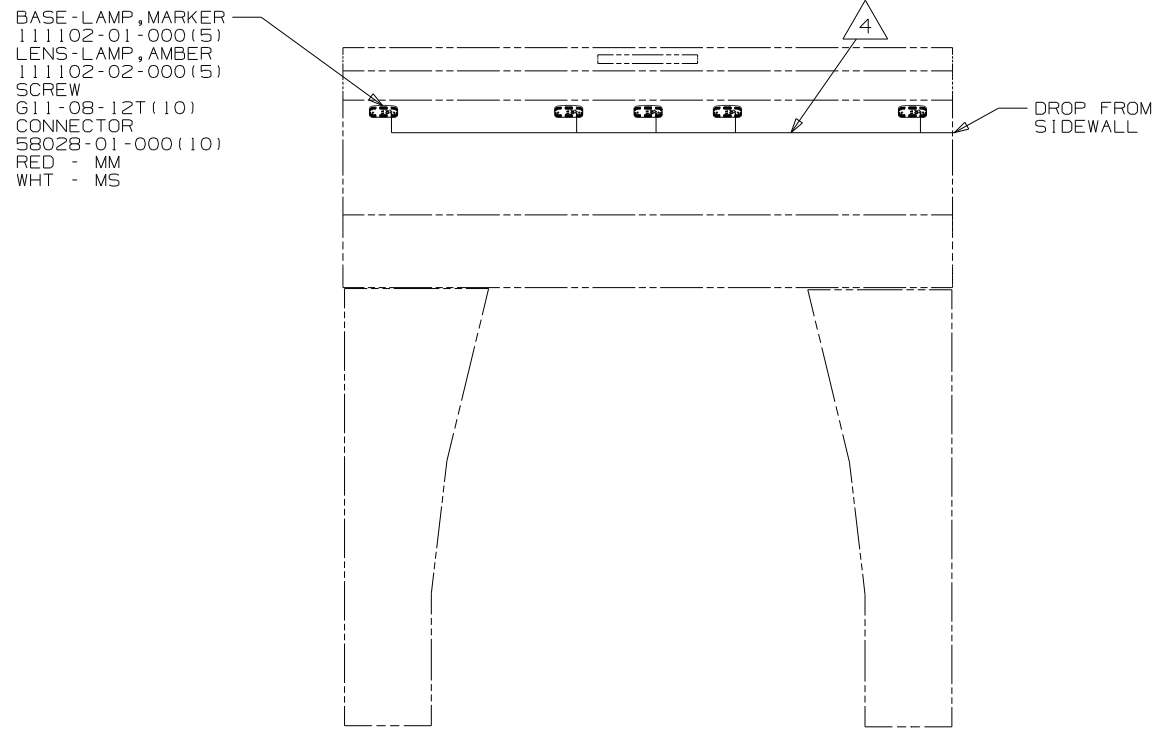
REF: 1 02/28/03

NOTES:
1 WIRE IS INTEGRAL TO SIDEWALL

FOR ELECTRICAL
TORQUE
SPECIFICATIONS
SEE DWG NO.
128783-01-000

X-X
FOR
ELECTRICAL
CALLOUTS
SEE DWG NO.
121339-01-000

8 7 6 5 4 3 2



- 4 WIRE IS INTEGRAL TO ROOF ASM.
- 3 WIRE IS INTEGRAL TO BACKWALL.
- 2 SEE WIRING INSTL-BODY, 12V FOR ADDITIONAL INFORMATION.
- 1 CONNECTOR-PLUG, TRAILER 113589-01-000 TO BE SUPPLIED LOOSE IN COACH WITH TRAILER TOW PACKAGE.

NOTES:

265 CODES/STANDARDS CSA
 1B1 CODES/STANDARDS USA

1B1 265

FOR ELECTRICAL TORQUE SPECIFICATIONS SEE DWG NO. 128783-01-000

X-X FOR ELECTRICAL CALLOUTS SEE DWG NO. 121339-01-000

FIRST USED	02 221B	
TITLE	DO NOT SCALE DRAWING	
TITLE	WIRING INSTL-EXTERIOR LAMPS	
SHEET	2	PART NO 139484