



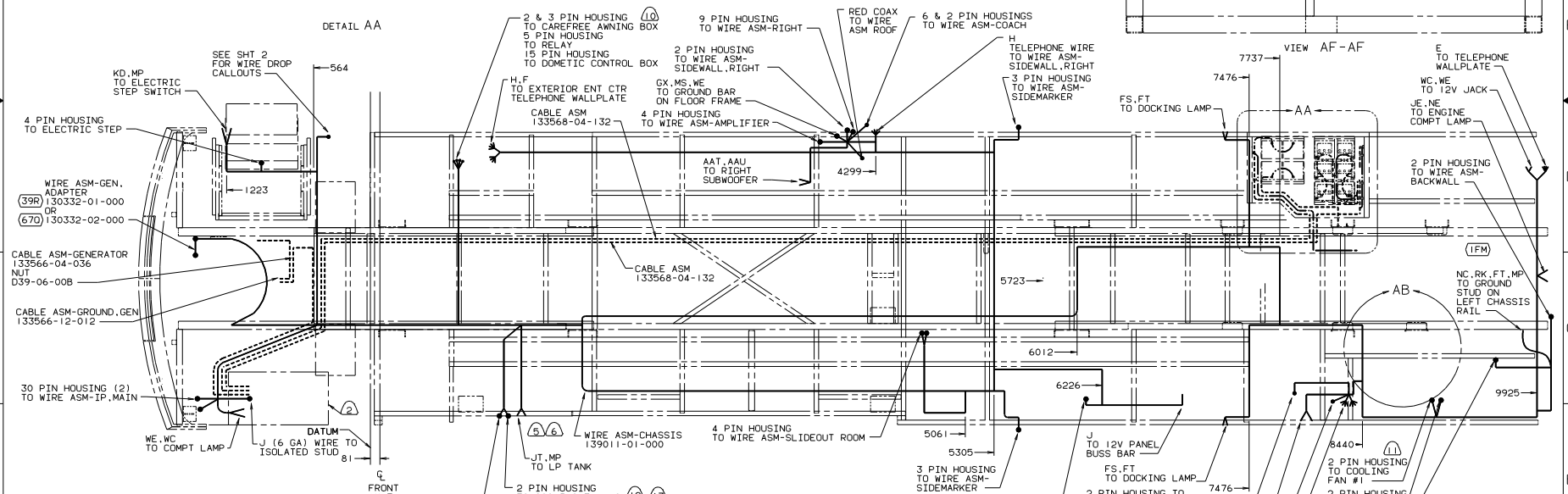
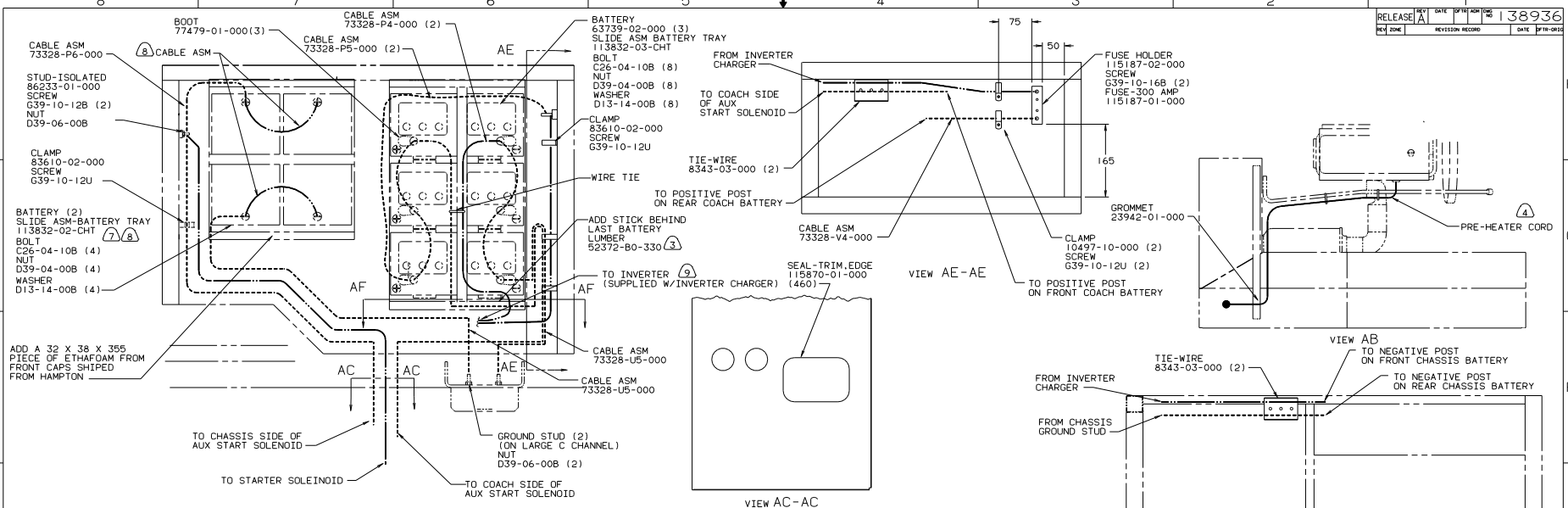
DANGER

Danger of electrical shock, burns or death. Always remove all power sources before attempting any repair, service or diagnostic work. Power can be present from shore power, generator, inverter or battery. All power sources must be disabled and secured before performing any service.



CAUTION

If you lack the skills, tools or equipment to perform diagnostic or repair work leave such work to an authorized Winnebago Industries dealer or other qualified shop.



9 SEE WIRING INSTL-BODY FOR ADDITIONAL INFORMATION.
8 SUPPLIED WITH CHASSIS.
7 BATTERY TIE DOWN STRAP SUPPLIED WITH SLIDE ASM-BATTERY TRAY.
6 USE WIRE TIE 8343-04-000 TO SECURE WIRES OR HOSES AT LEAST ONCE EVERY 600MM.
5 USE WIRE TIE 8343-04-000 TO SECURE WIRES TO FLOOR SUPPORT FRAME AT LEAST ONCE EVERY 600MM.
4 SECURE CORD AWAY FROM ALL MOVING PARTS AND EXHAUST WITH TIE-WIRE 93147-01-000 AS REQUIRED.
3 PAINT STICK BLACK WITH 106112-01-000.
2 SEE WIRING INSTL-FRONT END FOR ADDITIONAL INFORMATION.
1 LEGEND: WINNEBAGO, ----- CABLE, - - - - - CHASSIS SUPPLIED.

13 TIE UP EXCESS WIRE WITH WIRE TIE.
12 WITH 040JD ONLY.
11 WITH 040J ONLY.
10 WITHOUT ELECTRIC AWNING TIE WIRES TO MAIN FLOOR ALONG FRONT OF COMPARTMENT.

15E SPARTAN CHASSIS-31, 000# GVWR
15M FREIGHTLINER CHASSIS-29,410#
15R GEN-7, 5KW-ONAN-QUIET DIESEL
15Q GEN-6, 5KW-ONAN-LP-MARQUIS
15S CODES/STANDARDS-CSA/CMVSS
15T CODES/STANDARDS USA

15B **15C** **15D** **15E** **15F** **15G** **15H** **15I** **15J** **15K** **15L** **15M** **15N** **15O** **15P** **15Q** **15R** **15S** **15T** **15U** **15V** **15W** **15X** **15Y** **15Z**

WINNEBAGO 02 040J/JD

DATE	DATE	UNREVISIONED TRANSMISSION NO.	MATERIAL
DATE	DATE	UNREVISIONED TRANSMISSION NO.	MATERIAL
DATE	DATE	UNREVISIONED TRANSMISSION NO.	MATERIAL
DATE	DATE	UNREVISIONED TRANSMISSION NO.	MATERIAL

FOR ELECTRICAL TORQUE SPECIFICATIONS SEE DWG NO. 1287831-01-000

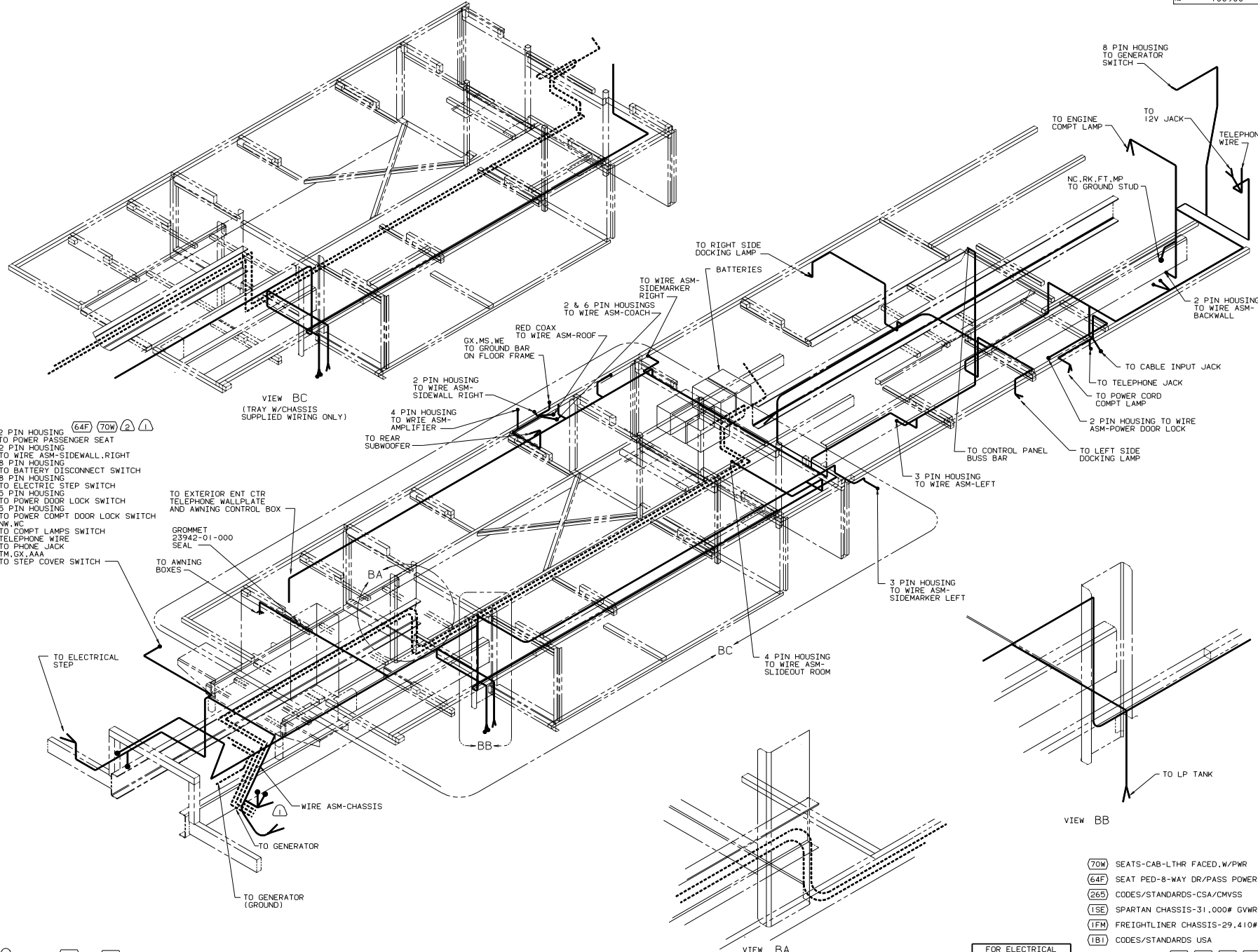
SCALE: NONE DO NOT SCALE DRAWING

WIRING INSTL-CHASSIS

138936

SHEET 1 OF 2 I E

REF: 135431-K PAGE 147



- 2 PIN HOUSING (64F) (70W) (2) (1)
- 2 PIN HOUSING TO POWER PASSENGER SEAT
- 2 PIN HOUSING TO WIRE ASM-SIDEWALL, RIGHT
- 8 PIN HOUSING TO BATTERY DISCONNECT SWITCH
- 8 PIN HOUSING TO ELECTRIC STEP SWITCH
- 5 PIN HOUSING TO POWER DOOR LOCK SWITCH
- 5 PIN HOUSING TO POWER COMPT DOOR LOCK SWITCH
- NW.WG TO COMPT LAMPS SWITCH
- TELEPHONE WIRE TO PHONE JACK
- TM.GX.AAA TO STEP COVER SWITCH

NOTES:
 (2) WITHOUT (64F) OR (70W). COIL WIRE UNDER PASSENGER CONSOLE.
 (1) SEE WIRING INSTL-FRONT END FOR ADDITIONAL INFORMATION.

- (70W) SEATS-CAB-LTHR FACED.W/PWR
- (64F) SEAT PED-8-WAY DR/PASS POWER
- (265) CODES/STANDARDS-CSA/CMVSS
- (1SE) SPARTAN CHASSIS-31,000# GVWR
- (1FM) FREIGHTLINER CHASSIS-29,410#
- (1B1) CODES/STANDARDS USA

FOR ELECTRICAL TORQUE SPECIFICATIONS SEE DWG NO 128783-01-000

02 Q40J/JD (1B1) (265) (1FM) (1SE)
 TITLE: WIRING INSTL-CHASSIS
 DWG NO 138936
 SHEET 2 OF 2