



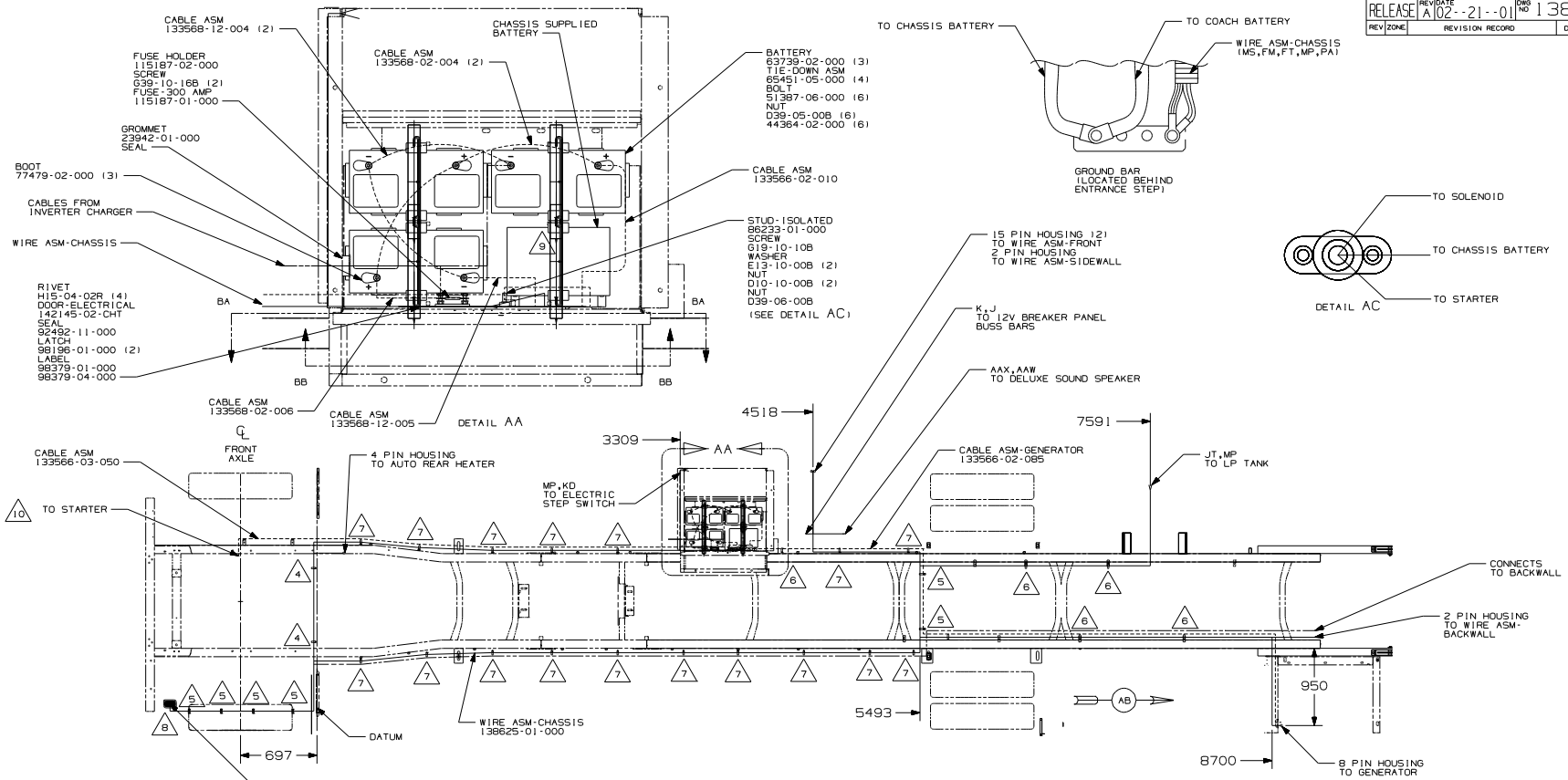
DANGER

Danger of electrical shock, burns or death. Always remove all power sources before attempting any repair, service or diagnostic work. Power can be present from shore power, generator, inverter or battery. All power sources must be disabled and secured before performing any service.



CAUTION

If you lack the skills, tools or equipment to perform diagnostic or repair work leave such work to an authorized Winnebago Industries dealer or other qualified shop.



- 9 USE TWO NUTS HERE TO ACCOUNT FOR BATTERY HEIGHT DIFFERENCE.
- 8 SEE WIRING INSTL-FRONT END FOR ADDITIONAL INFORMATION.
- 7 CLAMP 10497-02-000 AND SCREW G39-08-000.
- 6 CLAMP 83609-01-000 AND SCREW G39-08-000.
- 5 CLAMP 83610-01-000, SCREW G11-10-16B.
- 4 WIRE TIE 8343-04-000. FASTEN EVERY 600MM MINIMUM.
- 3 ALL DIMENSIONS ARE FROM DATUM UNLESS OTHERWISE SPECIFIED.
- 2 SECURE CONDUIT 41953-01-000, -02, AND -03 OVER ALL WIRES THAT CONTACT SHARP EDGES.
- 1 LEGEND: — WINNEBAGO, - - - - - CABLE, - - - - - CHASSIS SUPPLIED.

10 BATTERY CABLE MUST BE INSTALLED TO STARTER MOTOR BEFORE ENGINE WIRING HARNESS AND ROUTED IN SUCH A MANNER AS TO PREVENT ANY POSSIBLE DEGRADATION FROM THE EXHAUST SYSTEM.

IB1 265 IPR

WINNEBAGO

DATE 01/25/01
 DWG ALL DIMENSIONS ARE IN MILLIMETERS
 P.E.
 V.E. FIRST USED
 DWG 02 L39T

UNSPECIFIED TOLERANCES ARE:
 HOLE DIA (X.X) ± .1
 ONE-PLACE (X.XX) ± .15
 TWO-PLACE (X.XXX) ± 0.50
 HOLE ± .12

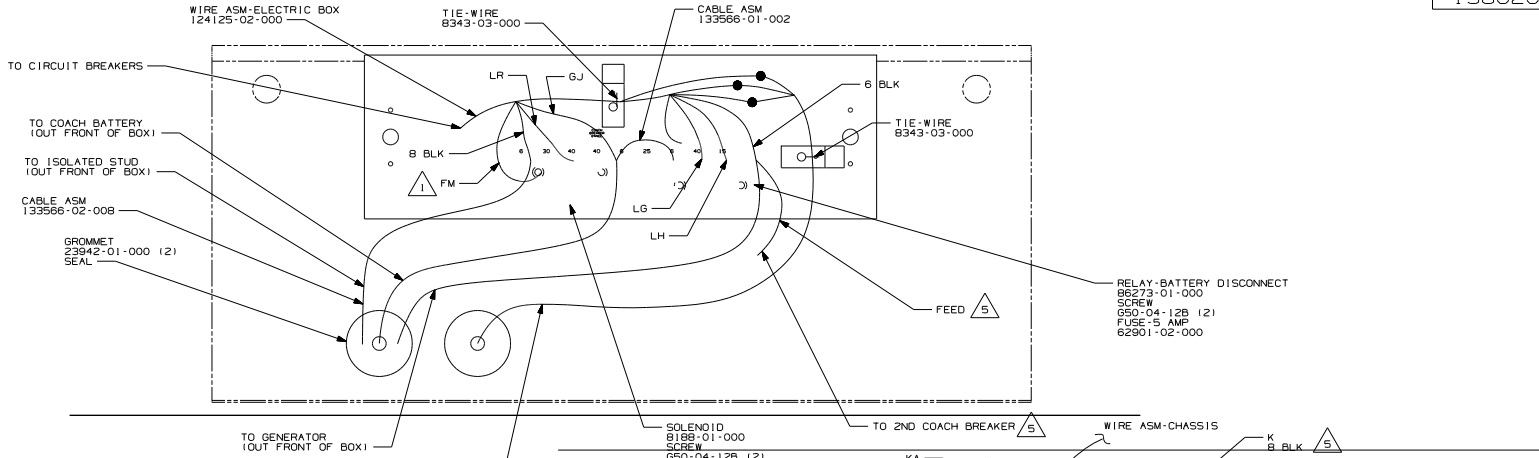
THIRD ANGLE PROJECTION

DO NOT SCALE DRAWING

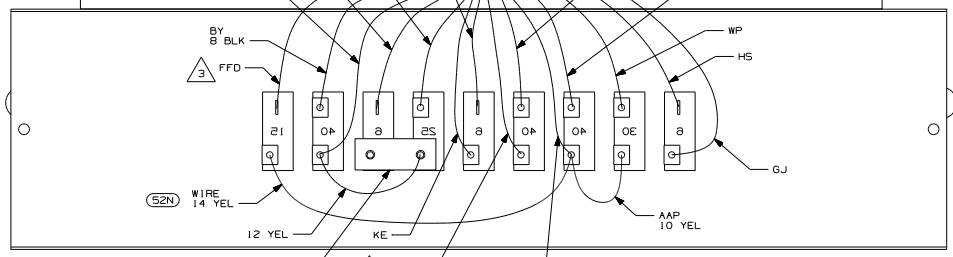
TITLE: WIRING INSTL-CHASSIS
 SHEET 1 of 2 PART NO 138626

REF: 1 PAGE 72

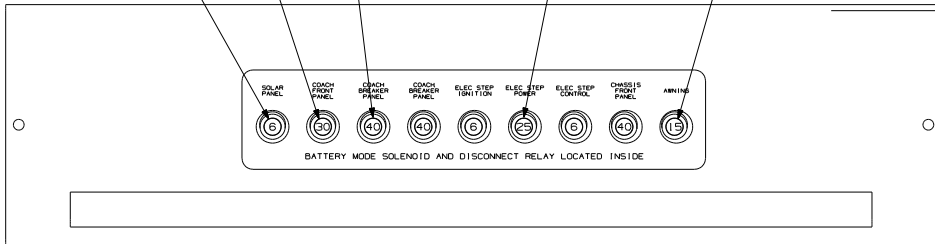
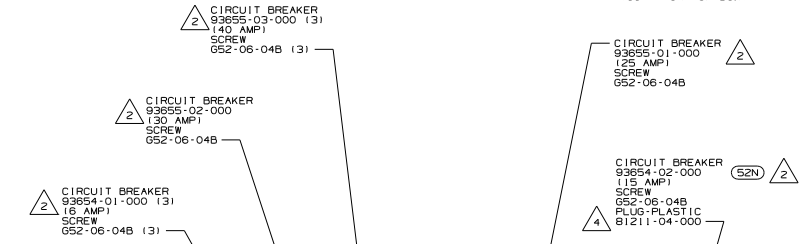
- IPR WORKHORSE 22,000
- 265 CODES/STANDARDS-CSA/CMVSS
- IB1 CODES/STANDARDS USA



VIEW BA-BA



VIEW BB-BB (WIRING)



- NOTES:
- 4 WITHOUT (52N)
 - 3 TIE BACK TO LOOM WITHOUT (52N)
 - 2 ADD LOCK WASHER OME028-04-071 1 PER SCREW.
 - 1 SECURE WITH SOLENOID MOUNTING SCREW.

5 FROM WIRE ASM-CHASSIS

- (52N) AWNING - PAT 10, ELECTRIC
- (265) CODES/STANDARDS-CSA/CMVSS
- (1B1) CODES/STANDARDS USA

FIRST USED	02 L39T
TITLE	DO NOT SCALE DRAWING
WIRING INSTL-CHASSIS	
SHEET 2	PART NO 138626