



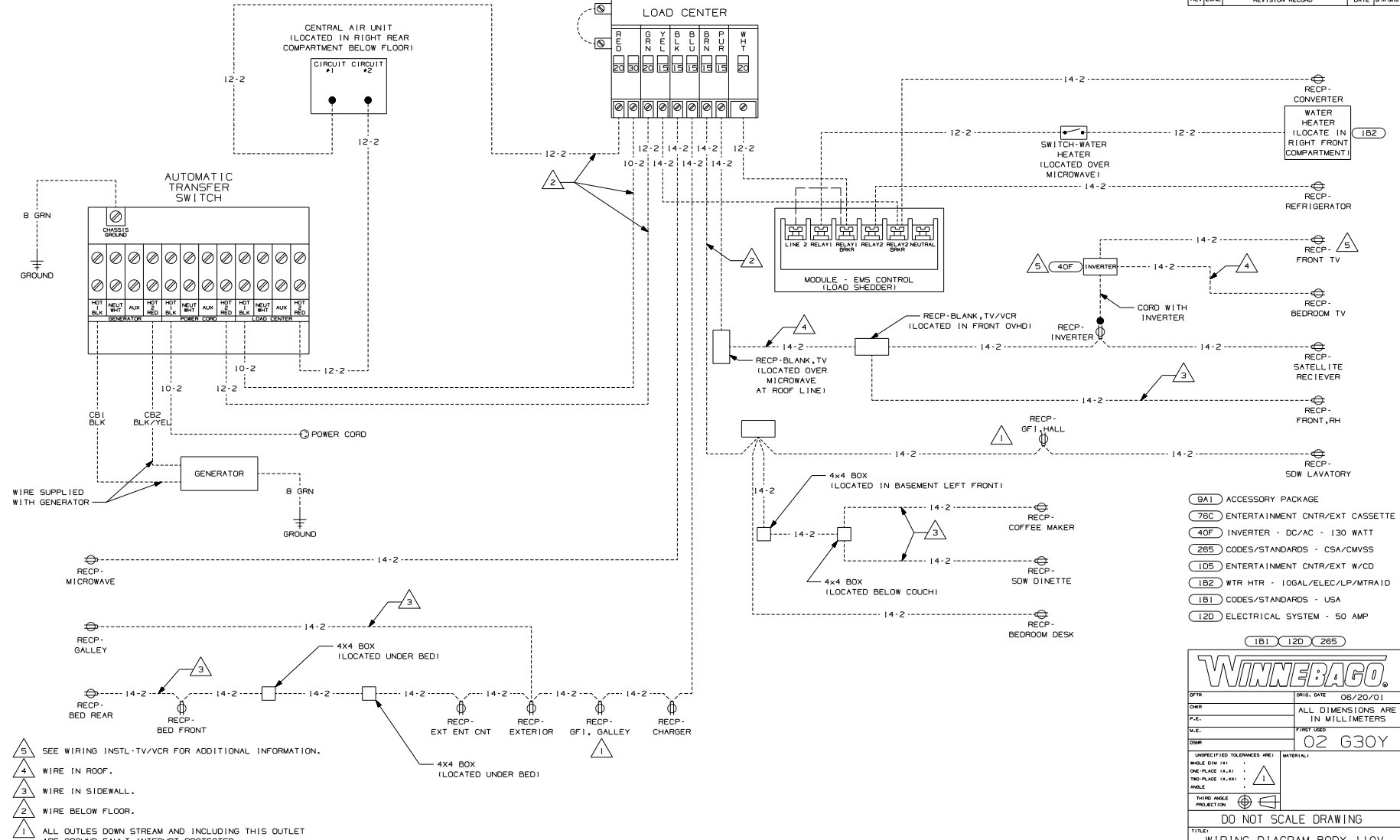
DANGER

Danger of electrical shock, burns or death. Always remove all power sources before attempting any repair, service or diagnostic work. Power can be present from shore power, generator, inverter or battery. All power sources must be disabled and secured before performing any service.



CAUTION

If you lack the skills, tools or equipment to perform diagnostic or repair work leave such work to an authorized Winnebago Industries dealer or other qualified shop.



- (9A1) ACCESSORY PACKAGE
- (78C) ENTERTAINMENT CNTR/EXT CASSETTE
- (40F) INVERTER - DC/AC - 130 WATT
- (285) CODES/STANDARDS - CSA/CMVSS
- (1D5) ENTERTAINMENT CNTR/EXT W/CD
- (1B2) WTR HTR - 10GAL/ELEC/LP/MTR/1A1D
- (1B1) CODES/STANDARDS - USA
- (12D) ELECTRICAL SYSTEM - 50 AMP

- (5) SEE WIRING INSTL-TV/VCR FOR ADDITIONAL INFORMATION.
- (4) WIRE IN ROOF.
- (3) WIRE IN SIDEWALL.
- (2) WIRE BELOW FLOOR.
- (1) ALL OUTLES DOWN STREAM AND INCLUDING THIS OUTLET ARE GROUND FAULT INTERRUPT PROTECTED.

WINNEBAGO

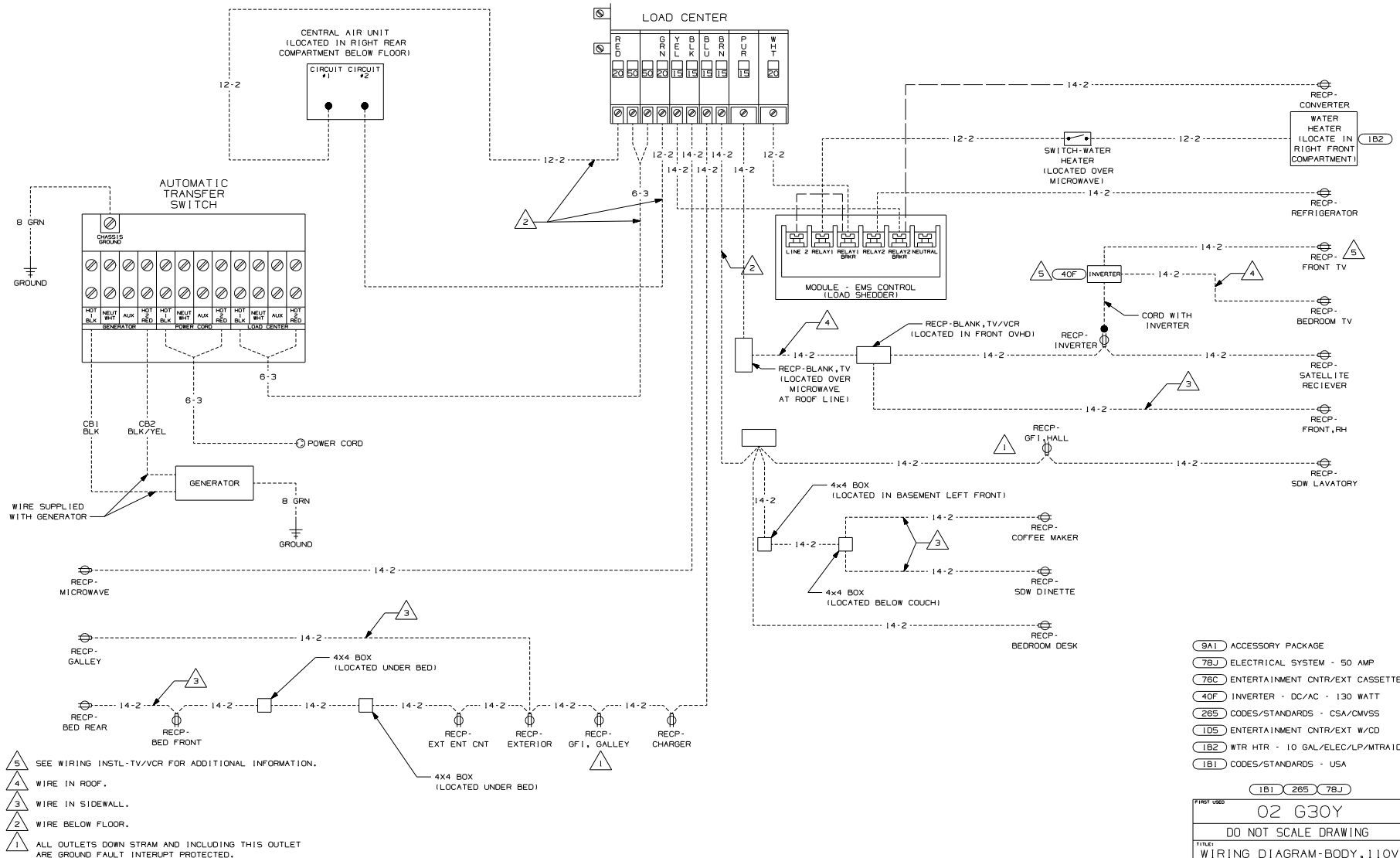
DATE: 06/20/01
 DWG: ALL DIMENSIONS ARE IN MILLIMETERS
 P.E.:
 W.E.:
 DWG: 02 G30Y

UNSPECIFIED TOLERANCES ARE:
 HOLE DIA (.1) ± .01
 ONE-PLACE (.1, .001) ± .01
 TWO-PLACE (.1, .001) ± .01
 HOLE ± .01

THIRD ANGLE PROJECTION

DO NOT SCALE DRAWING

TITLE: WIRING DIAGRAM-BODY, 110V
 SHEET 1 of 2 PART NO 138204



- 5 SEE WIRING INSTL-TV/VCR FOR ADDITIONAL INFORMATION.
- 4 WIRE IN ROOF.
- 3 WIRE IN SIDEWALL.
- 2 WIRE BELOW FLOOR.
- 1 ALL OUTLETS DOWN STRAM AND INCLUDING THIS OUTLET ARE GROUND FAULT INTERRUPT PROTECTED.

- 9A1 ACCESSORY PACKAGE
- 7BJ ELECTRICAL SYSTEM - 50 AMP
- 76C ENTERTAINMENT CNTR/EXT CASSETTE
- 40F INVERTER - DC/AC - 130 WATT
- 265 CODES/STANDARDS - CSA/CMVSS
- ID5 ENTERTAINMENT CNTR/EXT W/CD
- IB2 WTR HTR - 10 GAL/ELEC/LP/MTR/ID
- IB1 CODES/STANDARDS - USA

FIRST USED	
02 G30Y	
DO NOT SCALE DRAWING	
WIRING DIAGRAM-BODY, 110V	
SHEET 2	PART NO 138204