



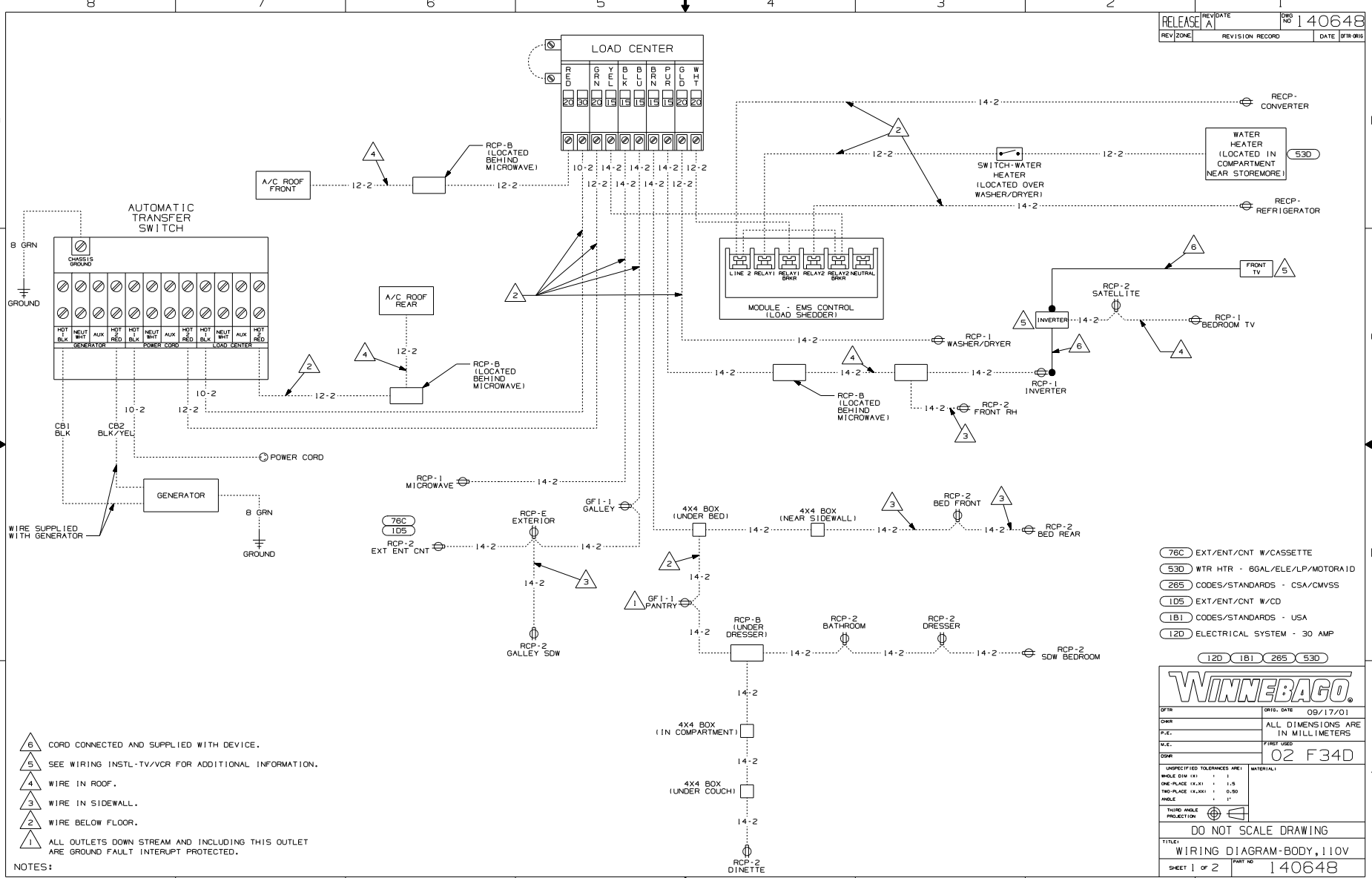
DANGER

Danger of electrical shock, burns or death. Always remove all power sources before attempting any repair, service or diagnostic work. Power can be present from shore power, generator, inverter or battery. All power sources must be disabled and secured before performing any service.



CAUTION

If you lack the skills, tools or equipment to perform diagnostic or repair work leave such work to an authorized Winnebago Industries dealer or other qualified shop.



- NOTES:
- △6 CORD CONNECTED AND SUPPLIED WITH DEVICE.
 - △5 SEE WIRING INSTL-TV/VCR FOR ADDITIONAL INFORMATION.
 - △4 WIRE IN ROOF.
 - △3 WIRE IN SIDEWALL.
 - △2 WIRE BELOW FLOOR.
 - △1 ALL OUTLETS DOWN STREAM AND INCLUDING THIS OUTLET ARE GROUND FAULT INTERRUPT PROTECTED.

- (78C) EXT/ENT/CNT W/CASSETTE
- (53D) WTR HTR - 6GAL/ELE/LP/MOTORAID
- (285) CODES/STANDARDS - CSA/CMVSS
- (ID5) EXT/ENT/CNT W/CD
- (LB1) CODES/STANDARDS - USA
- (L2D) ELECTRICAL SYSTEM - 30 AMP

WINNEBAGO

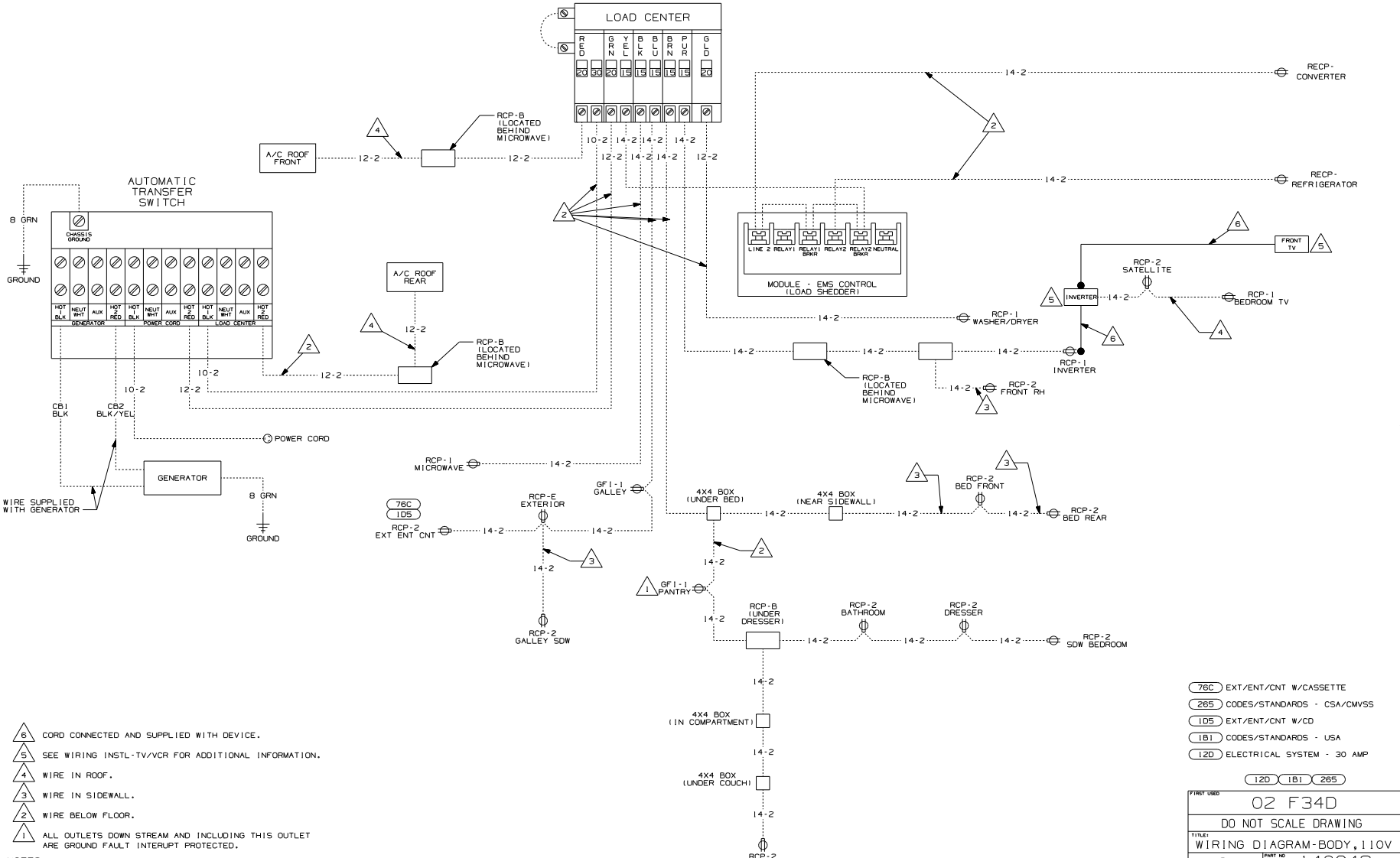
DATE: 09/17/01
 ALL DIMENSIONS ARE IN MILLIMETERS
 FIRST USED: 02 F34D

UNSPECIFIED TOLERANCES ARE:
 HOLE DIA (.X) ± .1
 ONE-PLACE (.X,X) ± 1.5
 TWO-PLACE (.X,X,X) ± 0.50
 HOLE ± .1"

THIRD ANGLE PROJECTION

DO NOT SCALE DRAWING

TITLE: WIRING DIAGRAM-BODY, 110V
 SHEET 1 of 2 PART NO 140648



- NOTES:
- 6 CORD CONNECTED AND SUPPLIED WITH DEVICE.
 - 5 SEE WIRING INSTL-TV/VCR FOR ADDITIONAL INFORMATION.
 - 4 WIRE IN ROOF.
 - 3 WIRE IN SIDEWALL.
 - 2 WIRE BELOW FLOOR.
 - 1 ALL OUTLETS DOWN STREAM AND INCLUDING THIS OUTLET ARE GROUND FAULT INTERRUPT PROTECTED.

- 76C EXT/ENT/CNT W/CASSETTE
- 285 CODES/STANDARDS - CSA/CMVSS
- ID5 EXT/ENT/CNT W/CD
- 1B1 CODES/STANDARDS - USA
- 12D ELECTRICAL SYSTEM - 30 AMP

FIRST USED		02 F34D	
DO NOT SCALE DRAWING			
TITLE: WIRING DIAGRAM-BODY, 110V			
SHEET 2	PART NO		140648