



DANGER

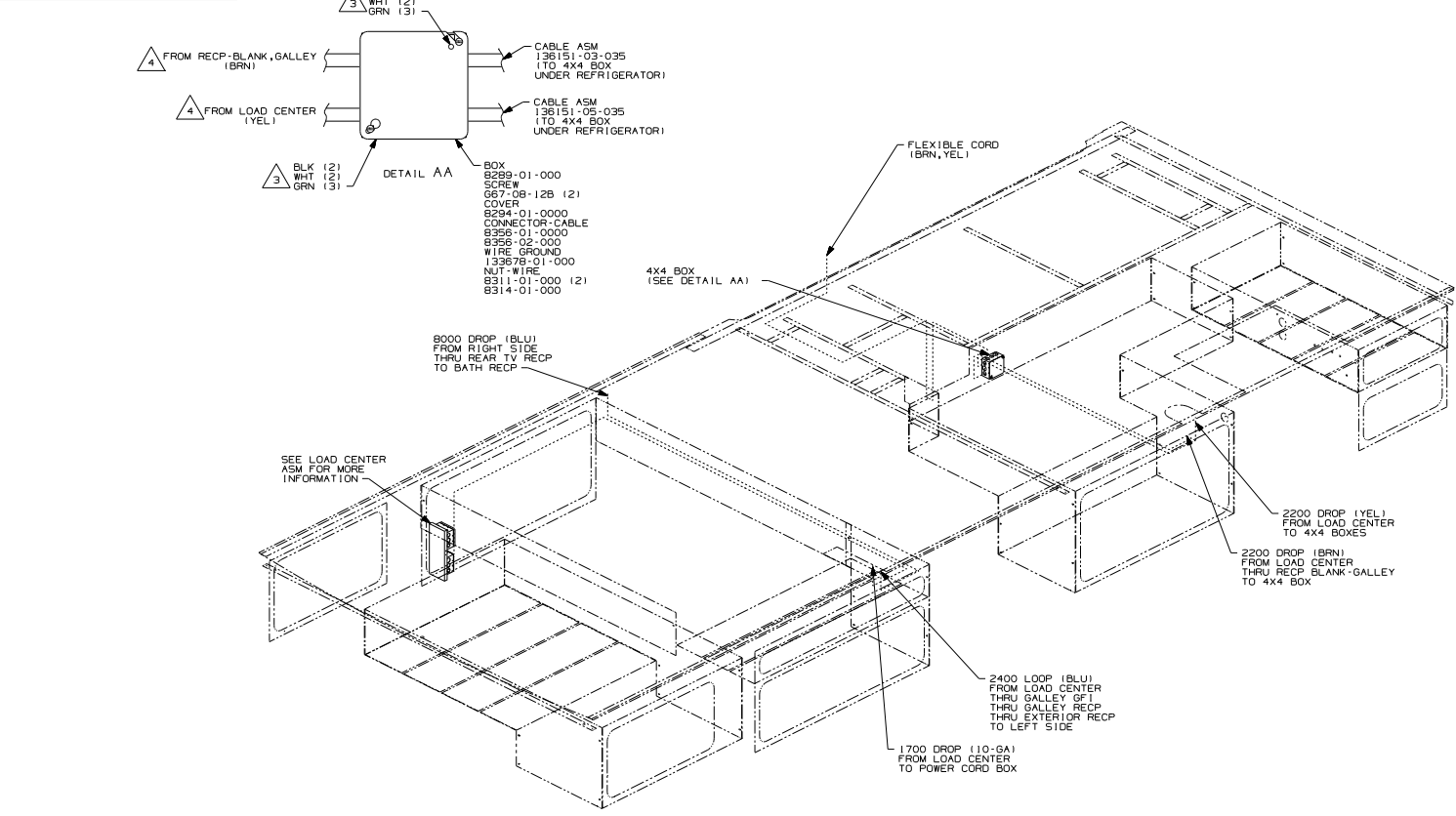
Danger of electrical shock, burns or death. Always remove all power sources before attempting any repair, service or diagnostic work. Power can be present from shore power, generator, inverter or battery. All power sources must be disabled and secured before performing any service.



CAUTION

If you lack the skills, tools or equipment to perform diagnostic or repair work leave such work to an authorized Winnebago Industries dealer or other qualified shop.

DWG NO	FEATURE
137856-01	
137856-11	(1B1)(12D)
137856-15	(265)(12D)



- 4** PRE PREP WIRE IN BOX.
 - 3** CONNECT BLACK TO BLACK, WHITE TO WHITE, AND GREENS TO GREENS. KEEP THE BROWN AND YELLOW CIRCUITS SEPARATE.
 - 2** SEE GENERATOR INSTL FOR ADDITIONAL INFO.
1. WIRES ROUTED UNDER FLOOR.

NOTES:

- (265) CODES/STANDARDS-CSA/CMVSS
- (12D) ELECTRICAL SYSTEM 30 AMP
- (1B1) CODES/STANDARDS USA
- (1B1) (265) (12D)

WINNEBAGO

ORIG. DATE 12/04/00
 ALL DIMENSIONS ARE IN MILLIMETERS
 FIRST USED
 OZ D27C/T

UNSPECIFIED TOLERANCES ARE:
 HOLE DIA (X.X) ± .1
 ONE-PLACE (X.X) ± 1.5
 TWO-PLACE (X.X) ± 0.50
 HOLE ± .1"

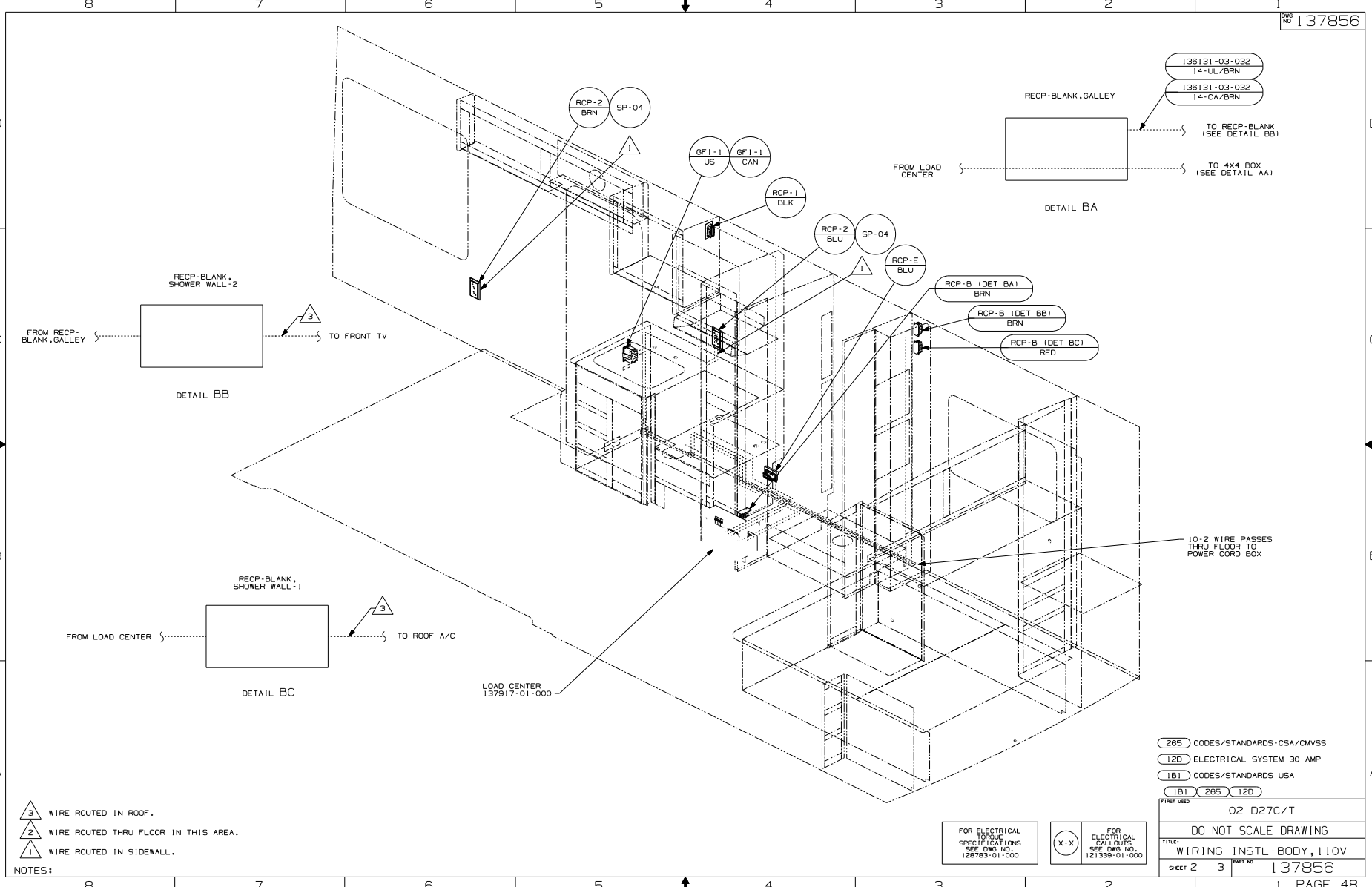
THIRD ANGLE PROJECTION

DO NOT SCALE DRAWING

TITLE: WIRING INSTL-BODY,110V
 SHEET 1 of 3 PART NO 137856

FOR ELECTRICAL TORQUE SPECIFICATIONS SEE DWG NO. 128783-01-000

(X-X) FOR ELECTRICAL CALLOUTS SEE DWG NO. 121338-01-000



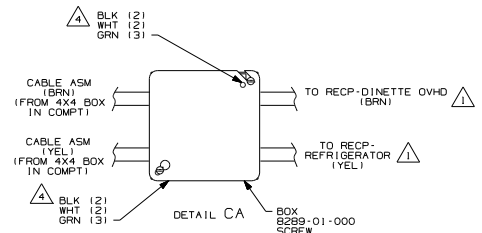
- NOTES:
- 3 WIRE ROUTED IN ROOF.
 - 2 WIRE ROUTED THRU FLOOR IN THIS AREA.
 - 1 WIRE ROUTED IN SIDEWALL.

- 265 CODES/STANDARDS-CSA/CMVSS
- 12D ELECTRICAL SYSTEM 30 AMP
- 1B1 CODES/STANDARDS USA
- 1B1 265 12D

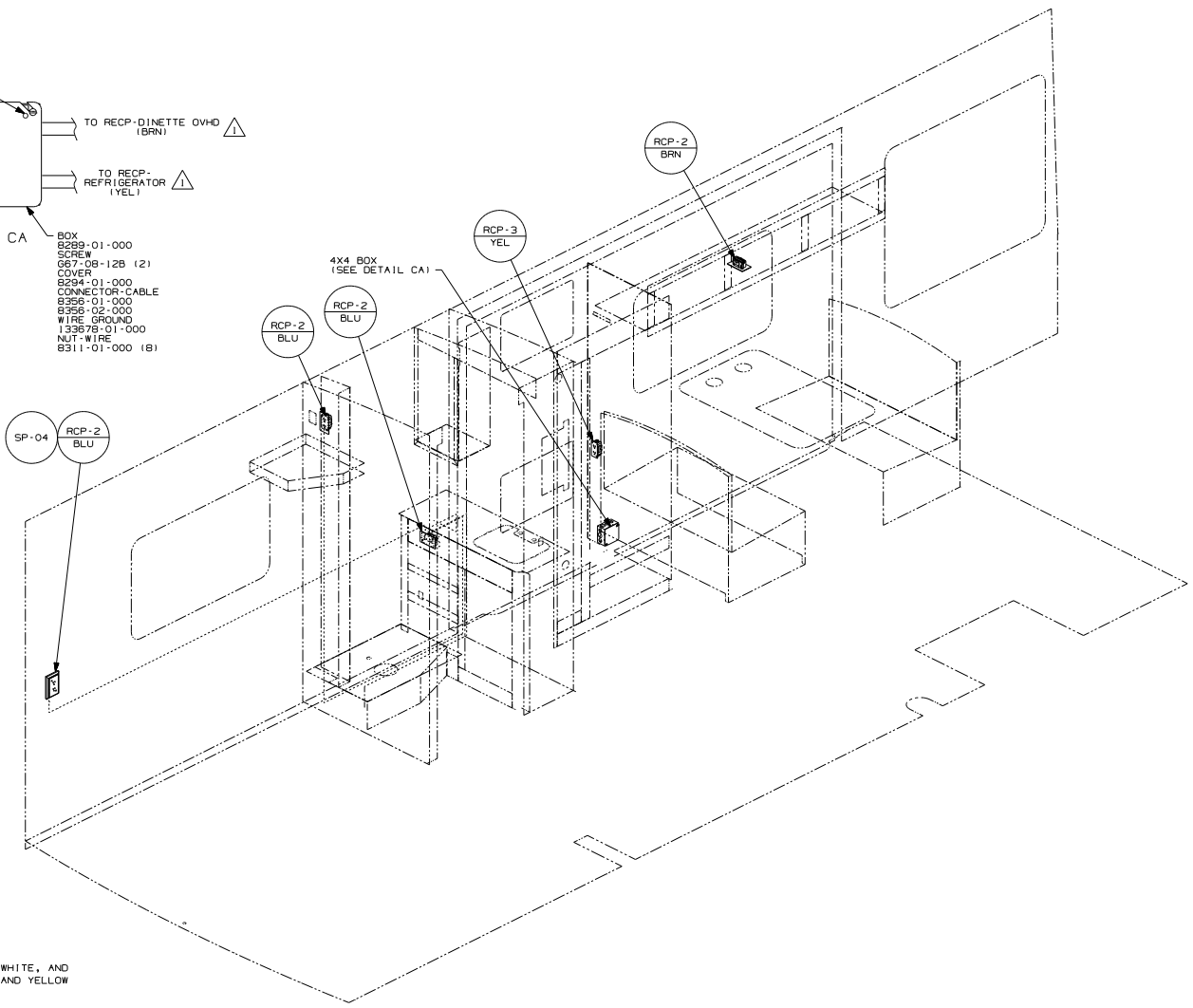
FOR ELECTRICAL TORQUE SPECIFICATIONS SEE DWG NO. 128783-01-000

(X-X) FOR ELECTRICAL CALLOUTS SEE DWG NO. 121338-01-000

REVISED	02 D27C/T
DO NOT SCALE DRAWING	
TITLE: WIRING INSTL-BODY,110V	
SHEET 2	3 PART NO 137856



- BOX 8289-01-000
- SCREW 667-08-128 (2)
- COVER 8324-01-000
- CONNECTOR-CABLE 8358-01-000
- 8358-02-000
- WIRE GROUND 13978-01-000
- NUT-WIRE 8311-01-000 (8)



- ▲ 4 CONNECT BLACK TO BLACK, WHITE TO WHITE, AND GREENS TO GREENS. KEEP THE BROWN AND YELLOW CIRCUITS SEPARATE.
- ▲ 3 WIRE ROUTED THRU ROOF.
- ▲ 2 WIRE ROUTED THRU FLOOR IN THIS AREA.
- ▲ 1 WIRE ROUTED IN SIDEWALL.

NOTES:

- 265 CODES/STANDARDS-CSA/CMVSS
- 120 ELECTRICAL SYSTEM 30 AMP
- 1B1 CODES/STANDARDS USA
- 1B1 265 120

FIRST DWG 02 D27C/T	DO NOT SCALE DRAWING
TITLE: WIRING INSTL-BODY,110V	PART NO 137856
SHEET 3	3

FOR ELECTRICAL TORQUE SPECIFICATIONS SEE DWG NO. 128783-01-000

(X-X) FOR ELECTRICAL CALLOUTS SEE DWG NO. 121338-01-000