



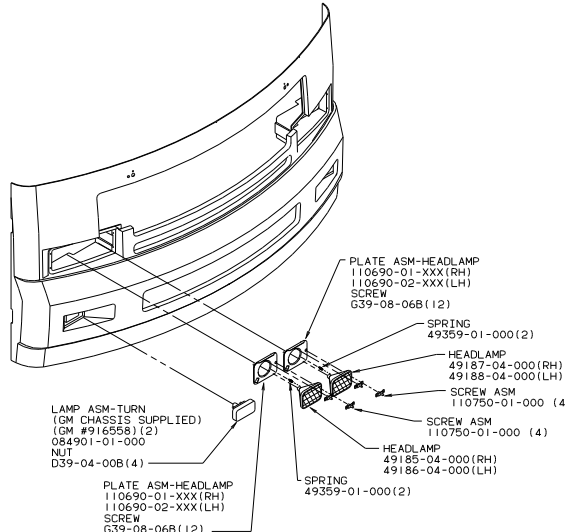
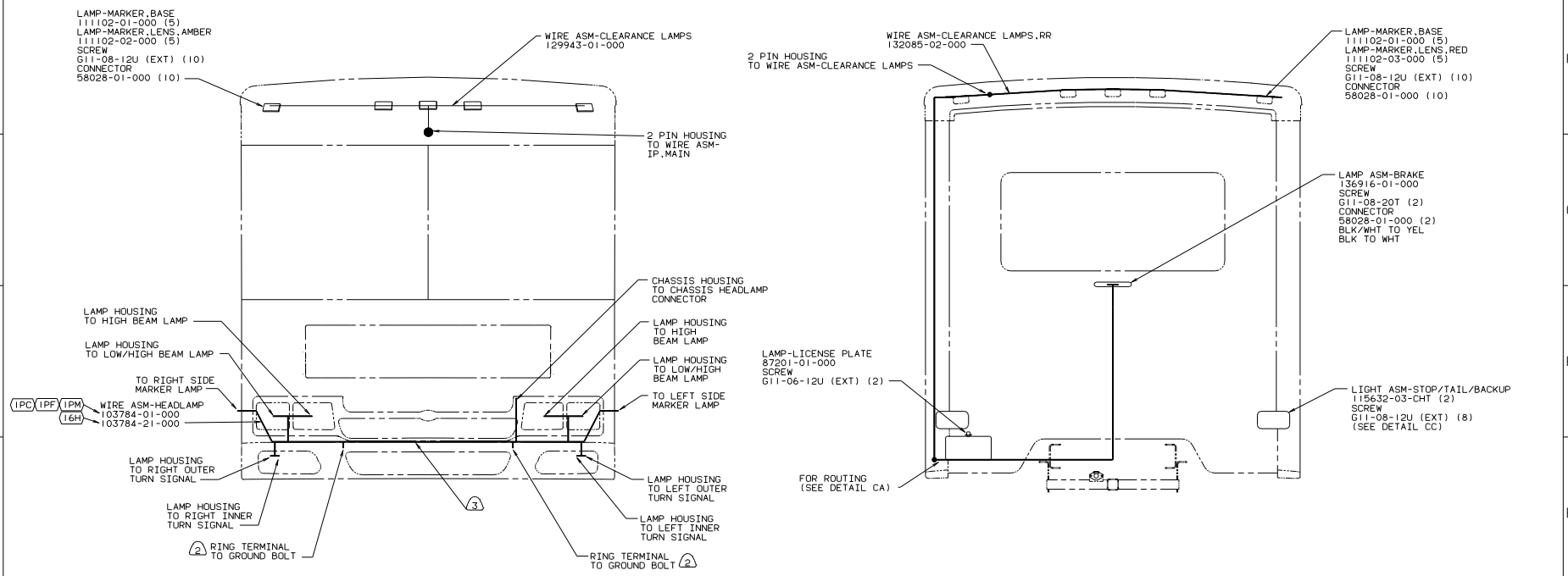
DANGER

Danger of electrical shock, burns or death. Always remove all power sources before attempting any repair, service or diagnostic work. Power can be present from shore power, generator, inverter or battery. All power sources must be disabled and secured before performing any service.



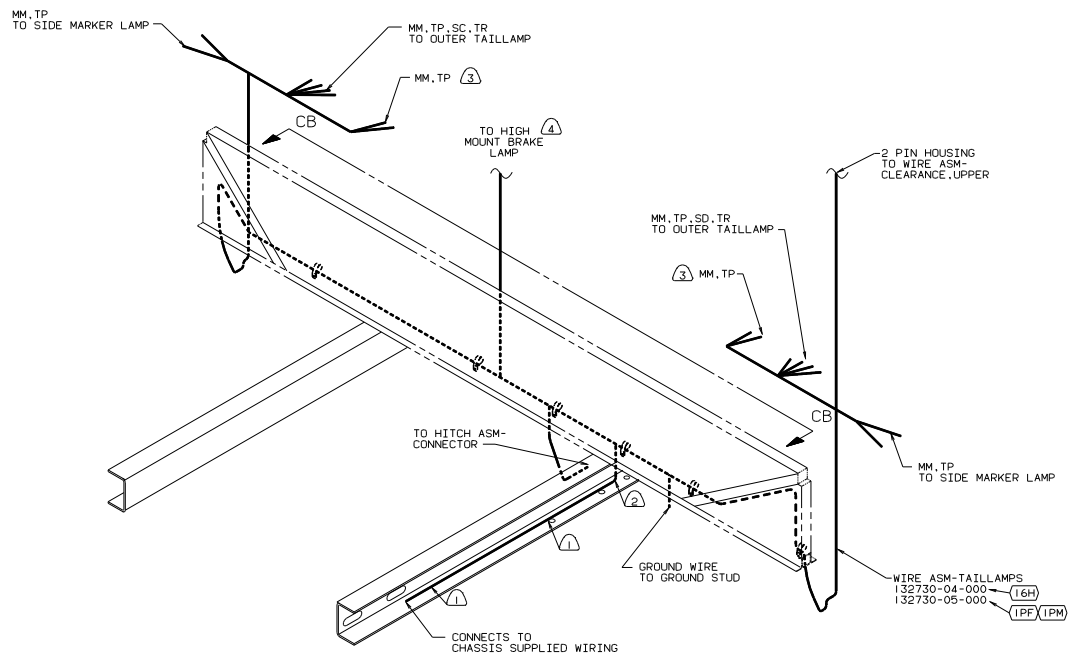
CAUTION

If you lack the skills, tools or equipment to perform diagnostic or repair work leave such work to an authorized Winnebago Industries dealer or other qualified shop.

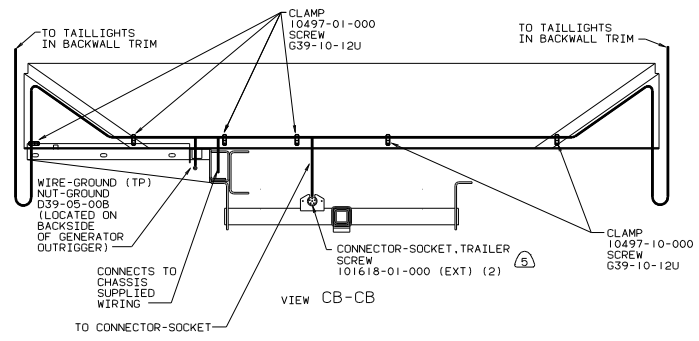


- ③ SECURE WIRE ASM APPROX. EVERY 450 TO BATTERY CABLES AND BRACKETS. USE TIE-WIRE 8343-01-000 OR 93147-01-000 AS APPROPRIATE.
 - ② CLEAN PAINT OFF METAL (BOLT) BEFORE CONNECTING GROUND TO INSURE CONTACT. ALLSD MOUNT CHASSIS SUPPLIED HORN TO GROUND BOLT.
 - 1. GATHER ALL EXCESS WIRE AFTER MAKING ALL CONNECTIONS AND BUNDLE AND SECURE WITH TIE-WIRE 8343-01-000 OR 93147-01-000.
- NOTES:

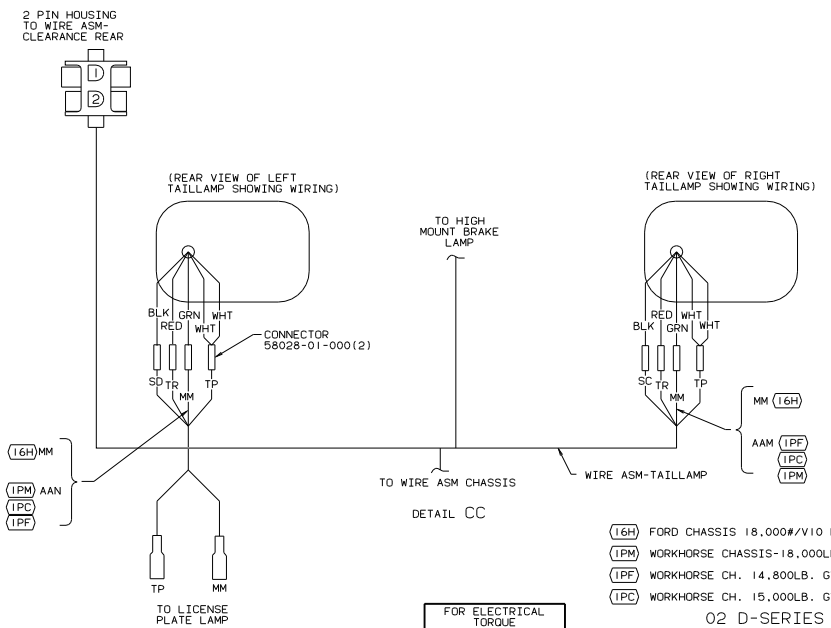
- (1PC) WORKHORSE CH. 15,000LB. GVWR
- (16H) FORD CHASSIS 18,000#/V10 ENG
- (1PF) WORKHORSE CH. 14,800LB. GVWR
- (1PM) WORKHORSE CHASSIS-18,000LB.
- (265) CODES/STANDARDS-CSA/CMVSS
- (1B1) CODES/STANDARDS USA
- (WIN) WINNEBAGO ONLY
- (ITA) ITASCA ONLY



DETAIL CA



VIEW CB-CB



DETAIL CC

- ① CONNECTOR-PLUG, TRAILER (113589-01-000) TO BE SUPPLIED LOOSE IN COACH WITH TRAILER TOW PACKAGE.
- ② WIRE ROUTED THRU FLOOR AND BEHIND HEADBOARD.
- ③ TIE BACK TO LOOM-NOT USED.
- ④ WIRE TO BE ROUTED ON BACK SIDE OF RISER.
- ⑤ WIRE TIE 8343-02. FASTEN TO FRAME AT LEAST ONCE EVERY 600MM.

NOTES:

FOR ELECTRICAL TORQUE SPECIFICATIONS SEE DWG NO. 128783-01-000

- (16H) FORD CHASSIS 18.000#/V10 ENG
- (IPM) WORKHORSE CHASSIS-18.000LB.
- (IPF) WORKHORSE CH. 14.800LB. GVWR
- (IPC) WORKHORSE CH. 15.000LB. GVWR

02 D-SERIES

WIRING INSTL-EXTERIOR LAMPS
 SHEET 3 OF 3