



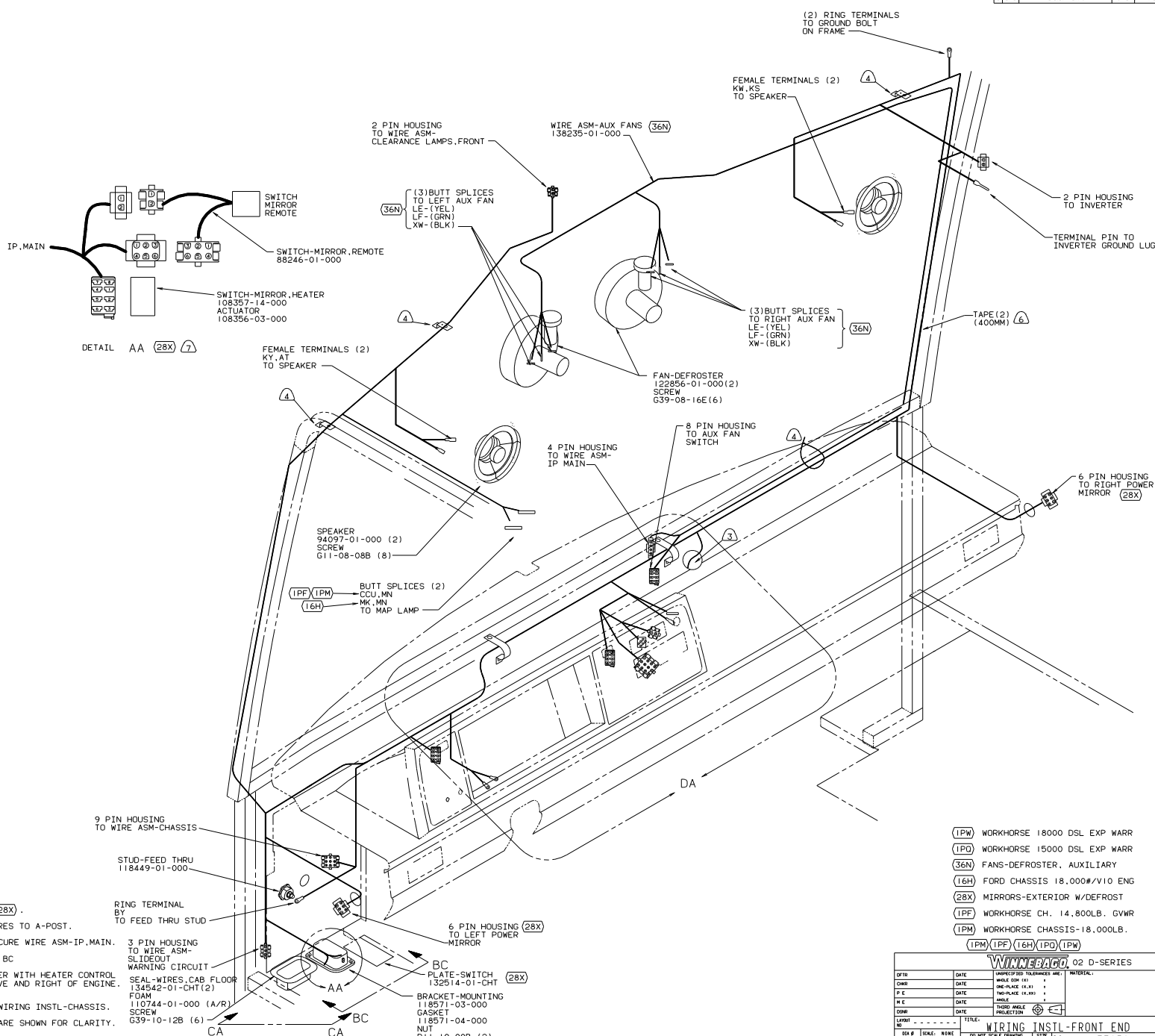
DANGER

Danger of electrical shock, burns or death. Always remove all power sources before attempting any repair, service or diagnostic work. Power can be present from shore power, generator, inverter or battery. All power sources must be disabled and secured before performing any service.



CAUTION

If you lack the skills, tools or equipment to perform diagnostic or repair work leave such work to an authorized Winnebago Industries dealer or other qualified shop.



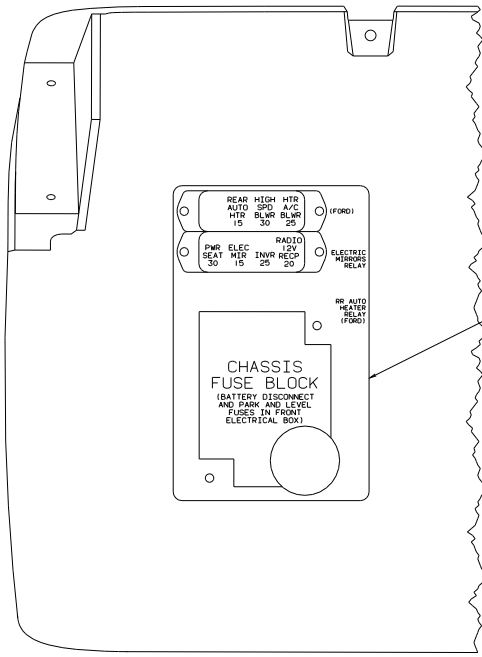
- NOTES:
1. ONLY WINNEBAGO WIRE ASSEMBLIES ARE SHOWN FOR CLARITY.
 2. FOR ADDITIONAL INFORMATION SEE WIRING INSTL-CHASSIS.
 3. ROUTE WASHER BOTTLE WIRE TOGETHER WITH HEATER CONTROL WIRES THROUGH HOLE IN STEEL ABOVE AND RIGHT OF ENGINE. USE GROMMET 23942-01-000.
 4. SEE ANTENNA INSTL-CB AND DETAIL BC
 5. USE WIRE TIE 93147-01-000 TO SECURE WIRE ASM-IP.MAIN.
 6. USE TAPE 136748-01 TO SECURE WIRES TO A-POST.
 7. TIE HOUSING BACK IN LOOM W/OUT (28X).

- (IPW) WORKHORSE 18000 DSL EXP WARR
- (IPD) WORKHORSE 15000 DSL EXP WARR
- (36N) FANS-DEFROSTER, AUXILIARY
- (16H) FORD CHASSIS 18,000#/V10 ENG
- (28X) MIRRORS-EXTERIOR W/DEFROST
- (IPF) WORKHORSE CH. 14,800LB. GVWR
- (IPM) WORKHORSE CHASSIS-18,000LB.
- (IPM)(IPF)(16H)(IPD)(IPW)

WINNEBAGO 02 D-SERIES

DATE	DATE	UNSPECIFIED TOLERANCES ARE:	MATERIAL
DATE	DATE	ONE-PLACE (1X, X1)	
DATE	DATE	TWO-PLACE (2X, X2)	
DATE	DATE	THREE-PLACE (3X, X3)	
DATE	DATE	FOUR-PLACE (4X, X4)	
DATE	DATE	FIVE-PLACE (5X, X5)	
DATE	DATE	SIX-PLACE (6X, X6)	
DATE	DATE	SEVEN-PLACE (7X, X7)	
DATE	DATE	EIGHT-PLACE (8X, X8)	
DATE	DATE	NINE-PLACE (9X, X9)	
DATE	DATE	TEN-PLACE (10X, X10)	

WIRING INSTL-FRONT END



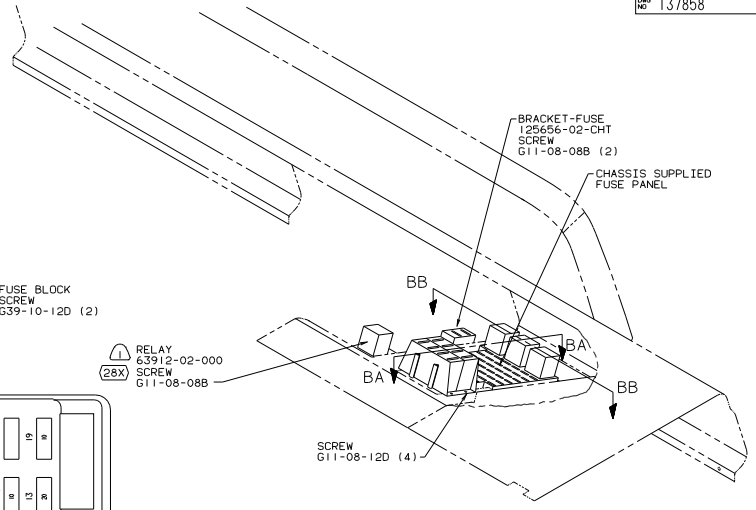
LABEL-FUSES 111537-08-000

FUSE-20 AMP 62901-06-000

(40F) FUSE-25 AMP 62901-07-000

(28X) FUSE-15 AMP 62901-05-000

BB-BB



FUSE-20 AMP 62901-06-000

FUSE-25 AMP 62901-07-000

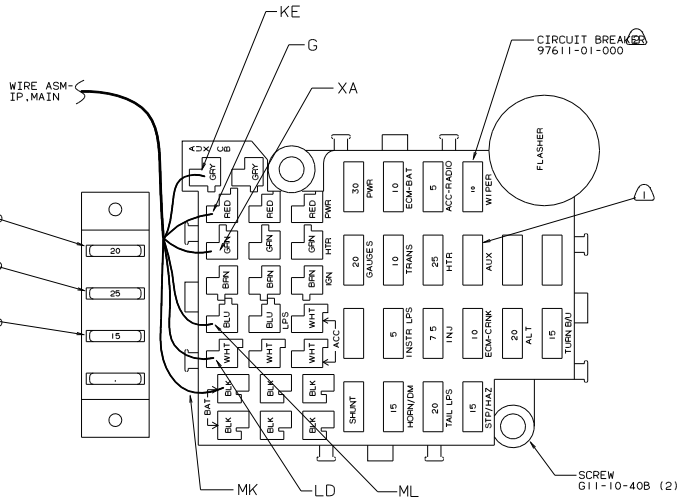
FUSE-30 AMP 62901-08-000

(40F) FUSE-25 AMP 62901-07-000

(28X) FUSE-15 AMP 62901-05-000

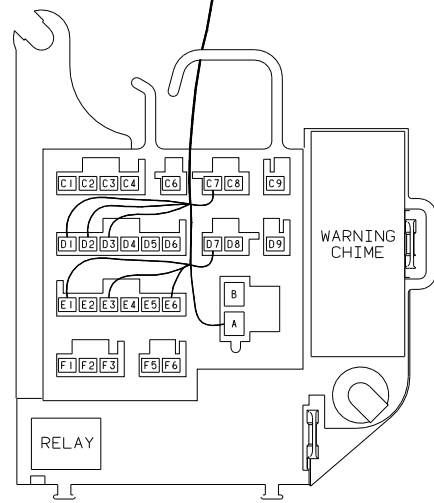
SCREW G39-10-12D (3)

VIEW BA-BA (16H)



VIEW BA-BA (1P)(1P)

WIRE ASM-IP, MAIN

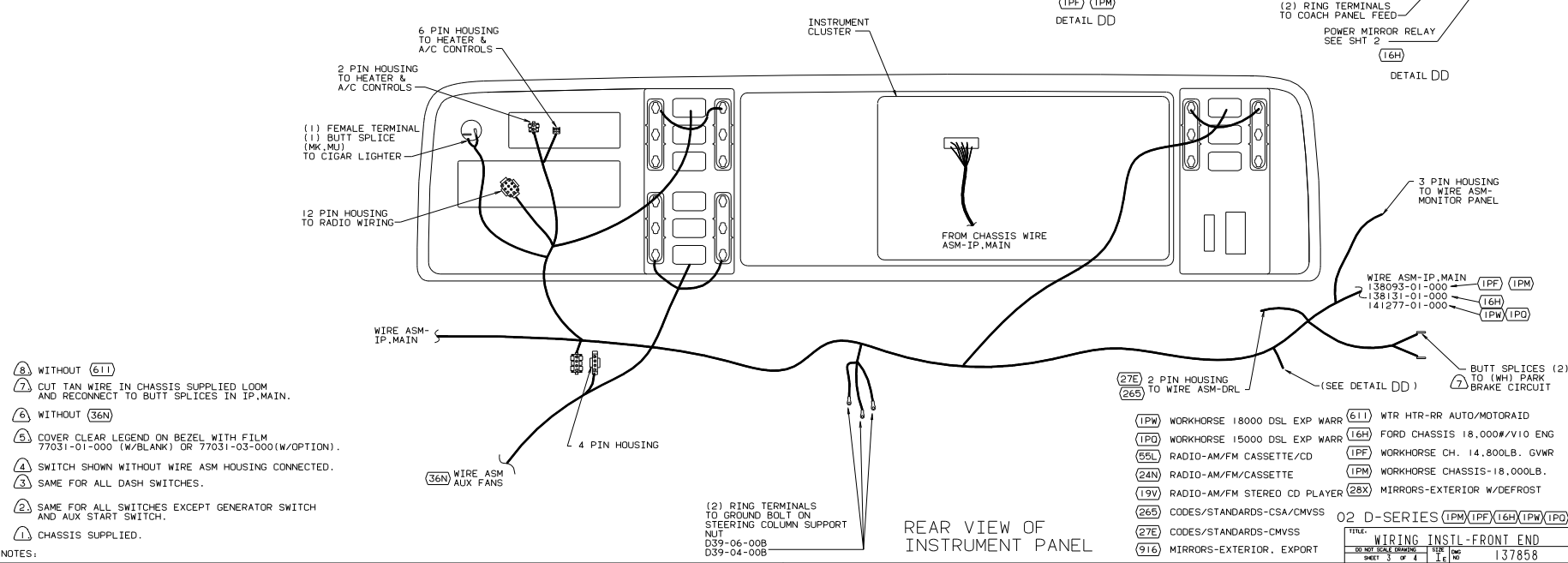
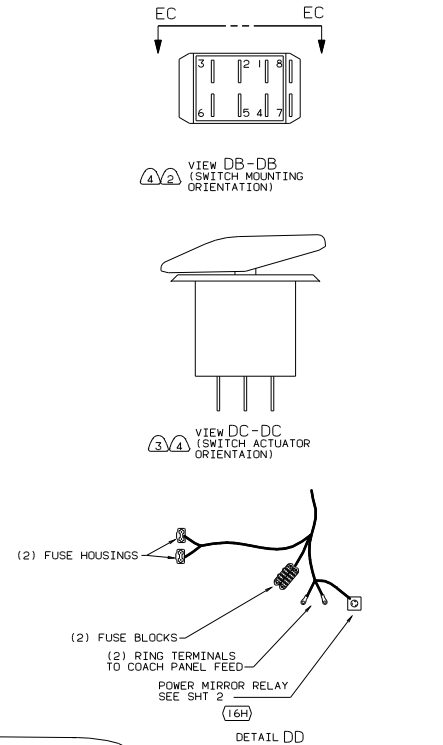
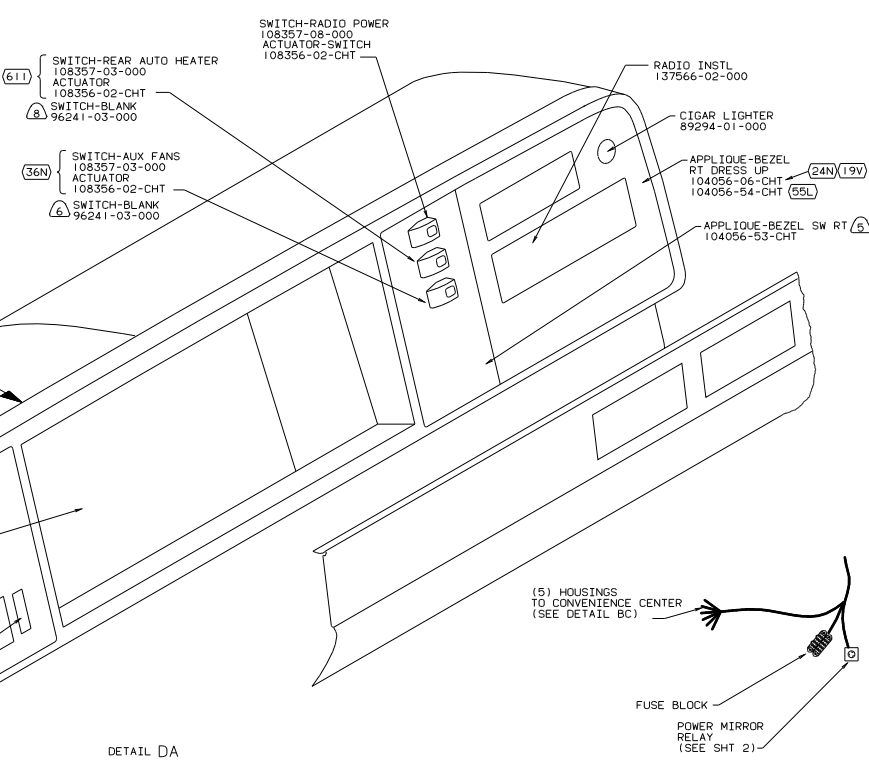
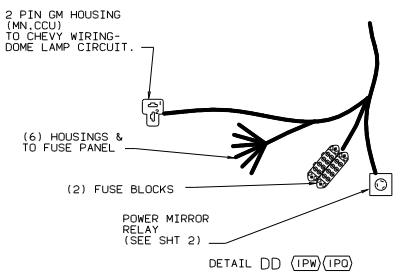
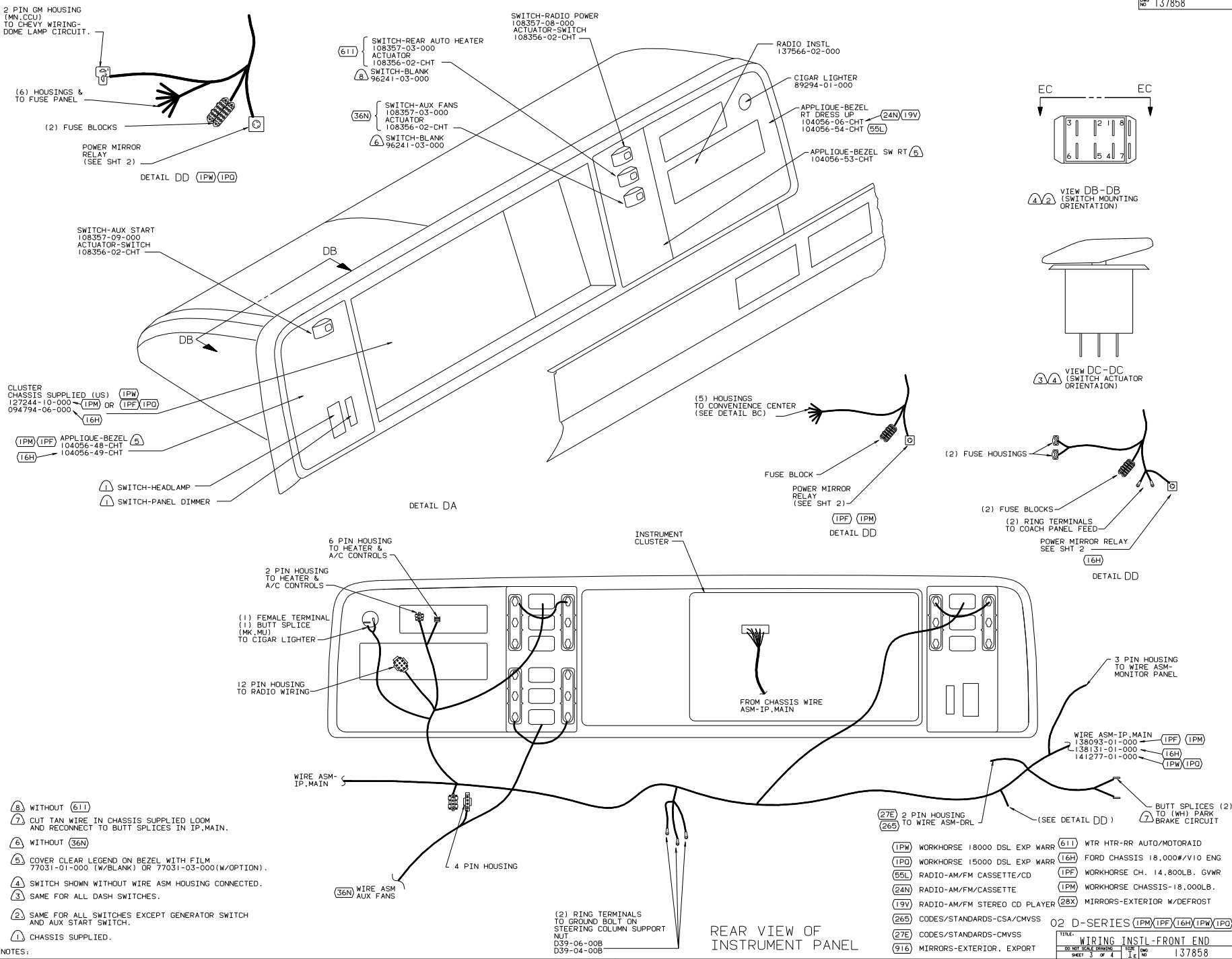


VIEW BC-BC (1P)(1P)

LOCATE WITH MOUNTING HOLE ON STEEL.

- (1P) WORKHORSE 18000 DSL EXP WARR
- (1P) WORKHORSE 15000 DSL EXP WARR
- (16H) FORD CHASSIS 18,000#/V10 ENG
- (1E2) ENTRANCE STEP-ELEC.
- (40F) INVERTER-DC/AC-130W
- (28X) MIRRORS-EXTERIOR W/DEFROST
- (1P) WORKHORSE CH. 14,800LB. GVWR
- (1P) WORKHORSE CHASSIS-18,000LB.

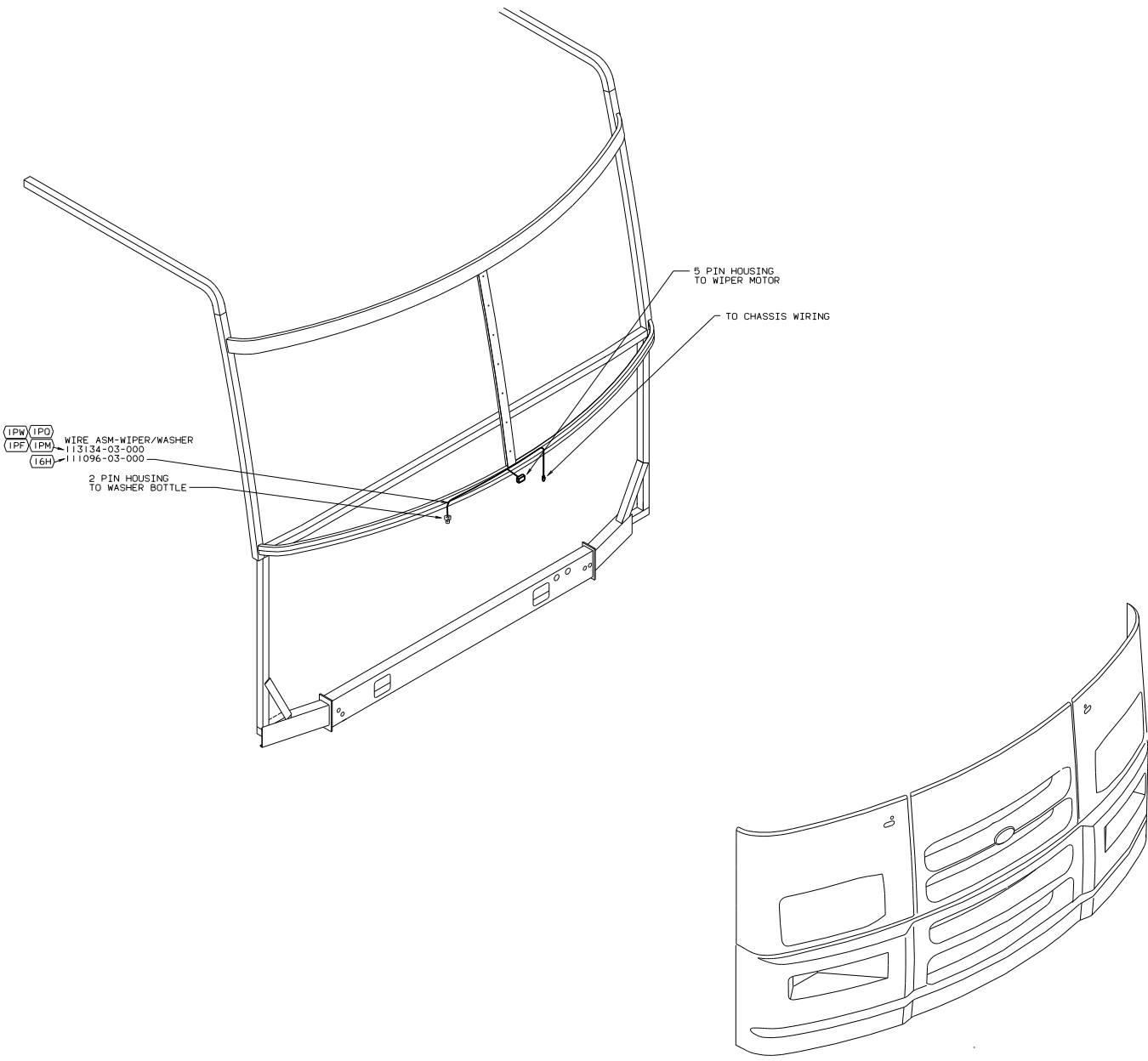
02 D-SERIES (1P)(1P)(16H)



- NOTES:
- 1 CHASSIS SUPPLIED.
 - 2 SAME FOR ALL SWITCHES EXCEPT GENERATOR SWITCH AND AUX START SWITCH.
 - 3 SAME FOR ALL DASH SWITCHES.
 - 4 SWITCH SHOWN WITHOUT WIRE ASM HOUSING CONNECTED.
 - 5 COVER CLEAR LEGEND ON BEZEL WITH FILM 77031-01-000 (W/BLANK) OR 77031-03-000 (W/OPTION).
 - 6 WITHOUT (36N)
 - 7 CUT TAN WIRE IN CHASSIS SUPPLIED LOOM AND RECONNECT TO BUTT SPLICES IN IP, MAIN.
 - 8 WITHOUT (611)

- (1PW) WORKHORSE 18000 DSL EXP WARR
- (1PD) WORKHORSE 15000 DSL EXP WARR
- (55L) RADIO-AM/FM CASSETTE/CD
- (24N) RADIO-AM/FM/CASSETTE
- (19V) RADIO-AM/FM STEREO CD PLAYER
- (26S) CODES/STANDARDS-CSA/CMVSS
- (27E) CODES/STANDARDS-CMVSS
- (91E) MIRRORS-EXTERIOR, EXPORT
- (611) WTR HTR-RR AUTO/MOTORAID
- (16H) FORD CHASSIS 18,000#/V10 ENG
- (1PF) WORKHORSE CH. 14,800LB. GVWR
- (1PM) WORKHORSE CHASSIS-18,000LB.
- (28X) MIRRORS-EXTERIOR W/DEFROST

REAR VIEW OF INSTRUMENT PANEL



(1PW) (1PO) WIRE ASM-WIPER/WASHER
 (1PF) (1PM) 113134-03-000
 (16H) 111096-03-000

2 PIN HOUSING TO WASHER BOTTLE

5 PIN HOUSING TO WIPER MOTOR

TO CHASSIS WIRING

- (1PW) WORKHORSE 18000 DSL EXP WARR
- (1PO) WORKHORSE 15000 DSL EXP WARR
- (16H) FORD CHASSIS 18,000#/V10 ENG
- (1PF) WORKHORSE CH. 14,800LB. GVWR
- (1PM) WORKHORSE CHASSIS-18,000LB.

02 D-SERIES (1PM)(1PF)(16H)

NOTES:
 1. GATHER ALL EXCESS WIRE AFTER MAKING ALL CONNECTIONS AND BUNDLE AND SECURE WITH TIE-WIRE 8343-01-000 OR 93147-01-000.