



**DANGER**

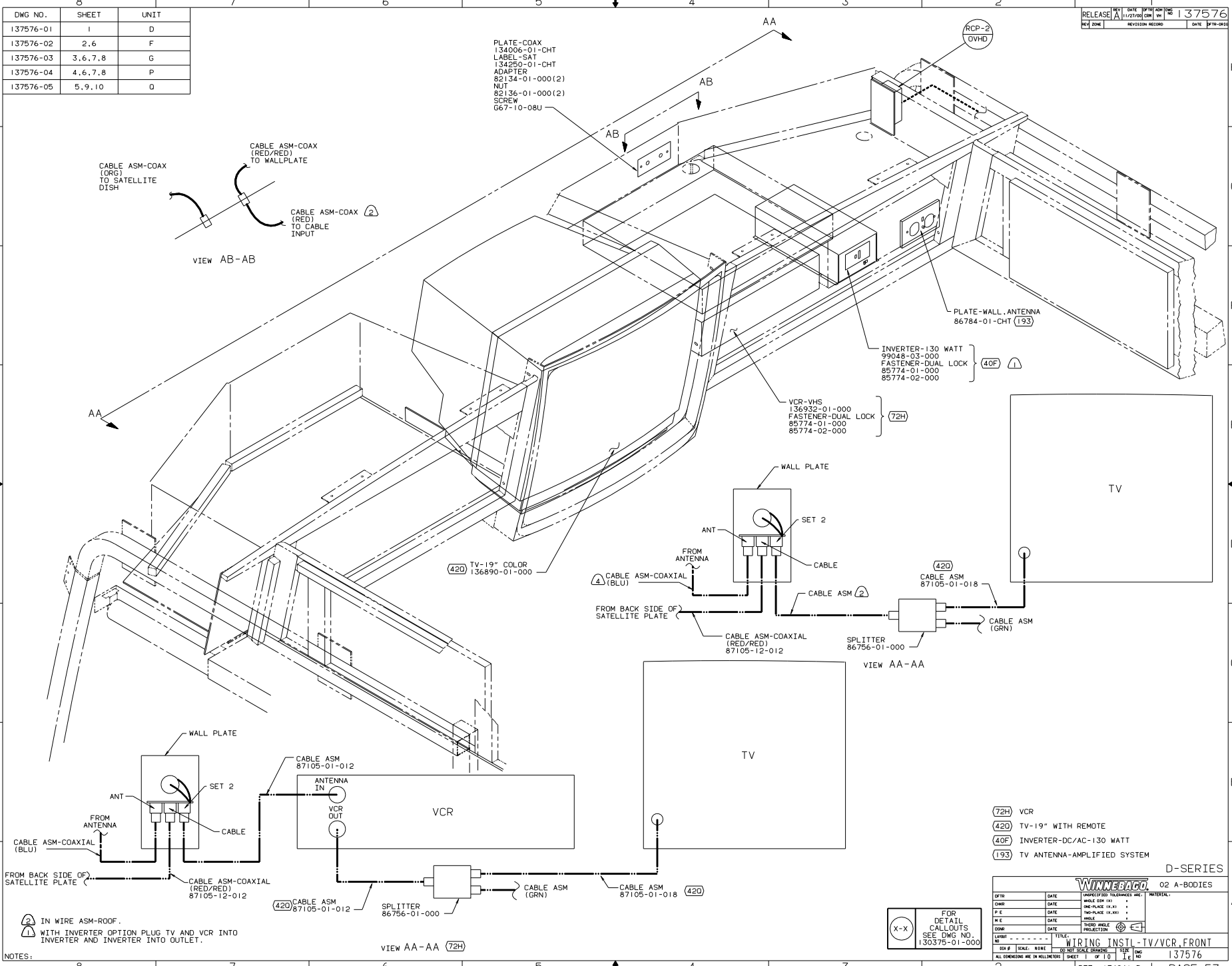
**Danger of electrical shock, burns or death.** Always remove all power sources before attempting any repair, service or diagnostic work. Power can be present from shore power, generator, inverter or battery. All power sources must be disabled and secured before performing any service.



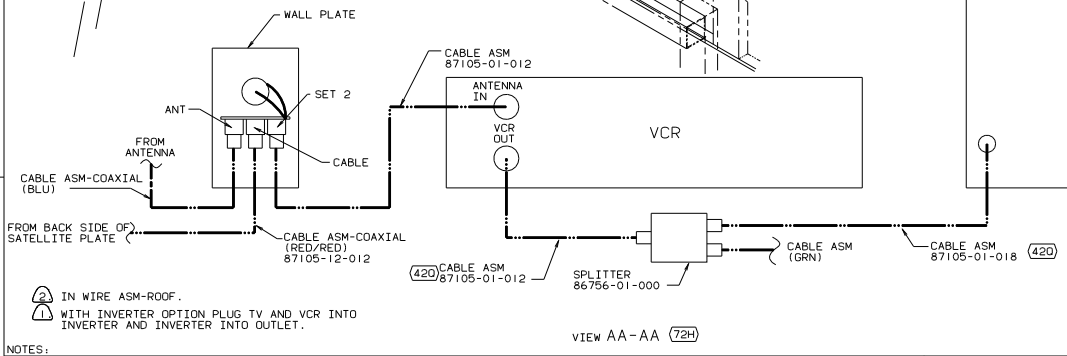
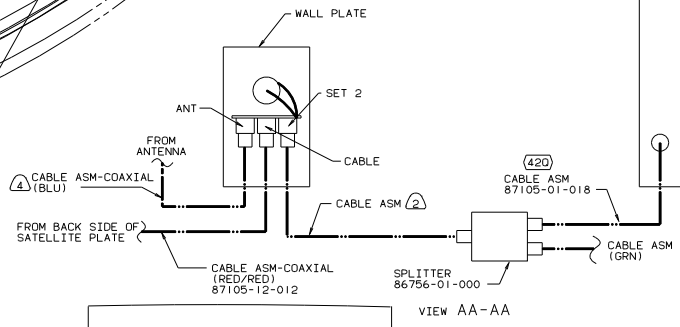
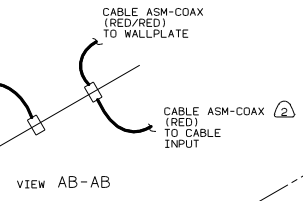
**CAUTION**

If you lack the skills, tools or equipment to perform diagnostic or repair work leave such work to an authorized Winnebago Industries dealer or other qualified shop.

DWG NO.	SHEET	UNIT
137576-01	I	D
137576-02	2.6	F
137576-03	3.6, 7, 8	G
137576-04	4.6, 7, 8	P
137576-05	5.9, 10	D



- PLATE-COAX 134006-01-CHT
- LABEL-SAT 134260-01-CHT
- ADAPTER 82134-01-000(2)
- NUT 82136-01-000(2)
- SCREW 667-10-08U



- (72H) VCR
- (40F) TV-19" WITH REMOTE
- (40F) INVERTER-DC/AC-130 WATT
- (193) TV ANTENNA-AMPLIFIED SYSTEM

NOTES:

(2) IN WIRE ASM-ROOF.

(1) WITH INVERTER OPTION PLUG TV AND VCR INTO INVERTER AND INVERTER INTO OUTLET.

(X-X) FOR DETAIL CALLOUTS SEE DWG NO. 130375-01-000

D-SERIES 02 A-BODIES

WINNERCO

DATE	UNSPECIFIED TOLERANCES ARE:	MATERIAL
DATE	GRADE DIM (IN)	
DATE	ONE-PLACE (IN, IN)	
DATE	TWO-PLACE (IN, IN)	
DATE	THREE-PLACE (IN, IN)	
DATE	THREE-ANGLE INDUCTION	

WIRING INSTL-TV/VCR\_FRONT

SCALE: NONE DO NOT SCALE DIMENSIONS

REF: 134841-D | PAGE 57