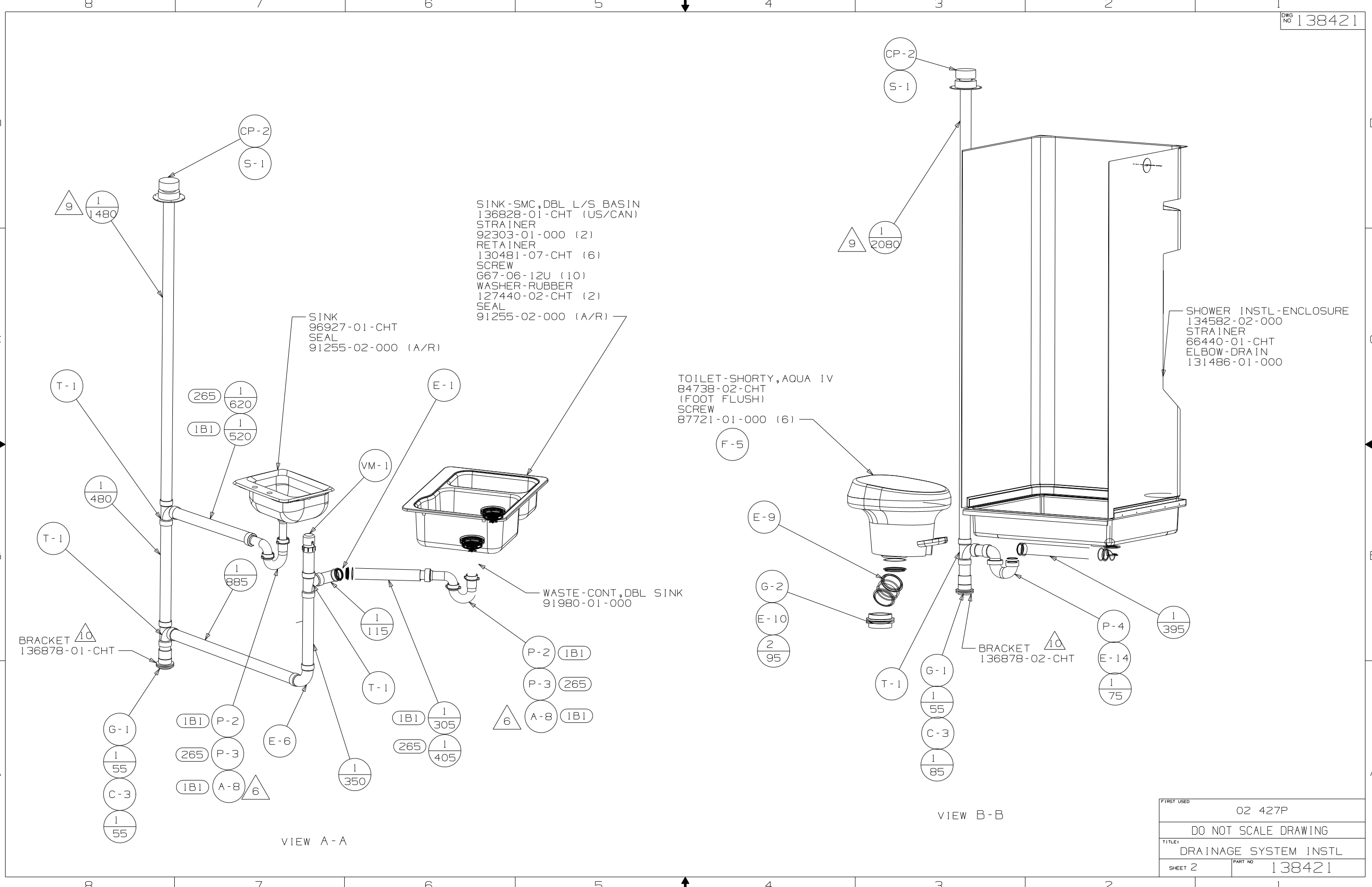


- NOTES:
1. SLOPE OF HORIZONTAL PIPING TO BE 6 PER 305 MIN.
 2. SLOPE OF TRAP ARM MUST BE 6 PER 305.
 3. ALL PIPE AND FITTINGS TO BE ASSEMBLED WITH SOLVENT 4020-01-000.
 4. ALL EXTERIOR OPENINGS AROUND PIPE TO BE SEALED WITH 110744-01-000.
 5. SECURE PIPES TO CABINET USING WIRE TIE 108046-02-000 AND SCREW G67-10-12B (8).
 6. TRIM P-TRAP EXTENSION TO FIT.
 7. SEAL ALL AROUND SHOWER SITH SILICONE.
 8. SEE DRAWING 61607-01-000 FOR INSTL OF GROMMETS.
 9. VENT PIPE MUST PROJECT 51 MM MIN AND 64 MM MAX ABOVE ROOF FOR PROPER FIT AND FUNCTION.
 10. SECURE VENT TUBES TO FLOOR WITH CLAMP 62401-02-000 (2) AND SCREW G67-10-12B (2).

(1B1) CODES/STANDARDS USA
 (265) CODES/STANDARDS-CSA/CMVSS

(X-X)
 FOR DRAINAGE CALLOUTS SEE DWG NO 116229-01-000

WINNEBAGO		COPYRIGHT 2002 WINNEBAGO INDUSTRIES, INC.	
DTR	ORIG. DATE	ALL DIMENSIONS ARE IN MILLIMETERS	
CHKR		FIRST USED	
P.E.		02 427P	
M.E.		UNSPECIFIED TOLERANCES ARE:	
DSNR		MATERIAL:	
		WHOLE DIM (X)	: 3
		ONE-PLACE (X.X)	:
		TWO-PLACE (X.XX)	:
		ANGLE	:
		THIRD ANGLE PROJECTION	
DO NOT SCALE DRAWING			
TITLE: DRAINAGE SYSTEM INSTL			
SHEET 1 OF 3	PART NO	138421	



SINK-SMC, DBL L/S BASIN
 136828-01-CHT (US/CAN)
 STRAINER
 92303-01-000 (2)
 RETAINER
 130481-07-CHT (6)
 SCREW
 G67-06-12U (10)
 WASHER-RUBBER
 127440-02-CHT (2)
 SEAL
 91255-02-000 (A/R)

SINK
 96927-01-CHT
 SEAL
 91255-02-000 (A/R)

TOILET-SHORTY, AQUA IV
 84738-02-CHT
 (FOOT FLUSH)
 SCREW
 87721-01-000 (6)

SHOWER INSTL-ENCLOSURE
 134582-02-000
 STRAINER
 66440-01-CHT
 ELBOW-DRAIN
 131486-01-000

WASTE-CONT, DBL SINK
 91980-01-000

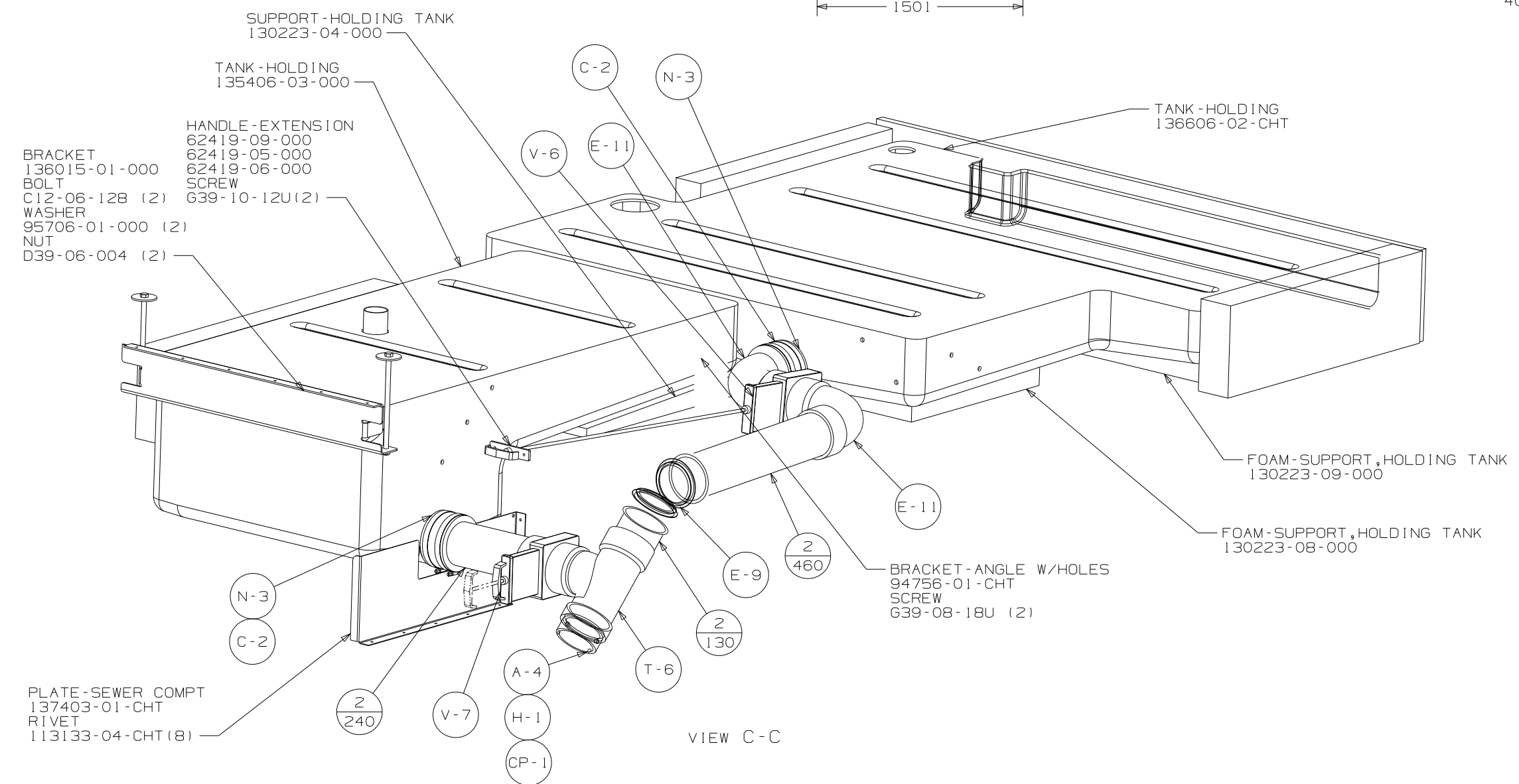
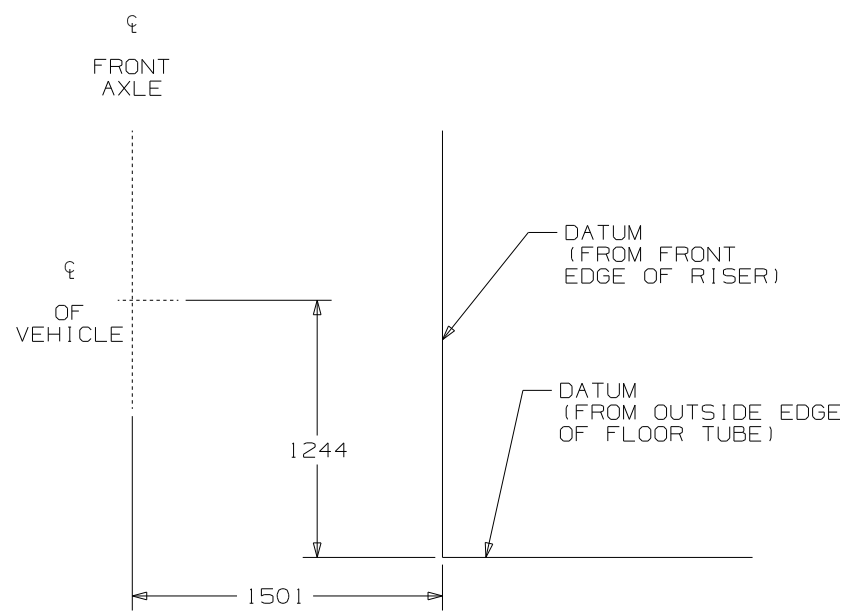
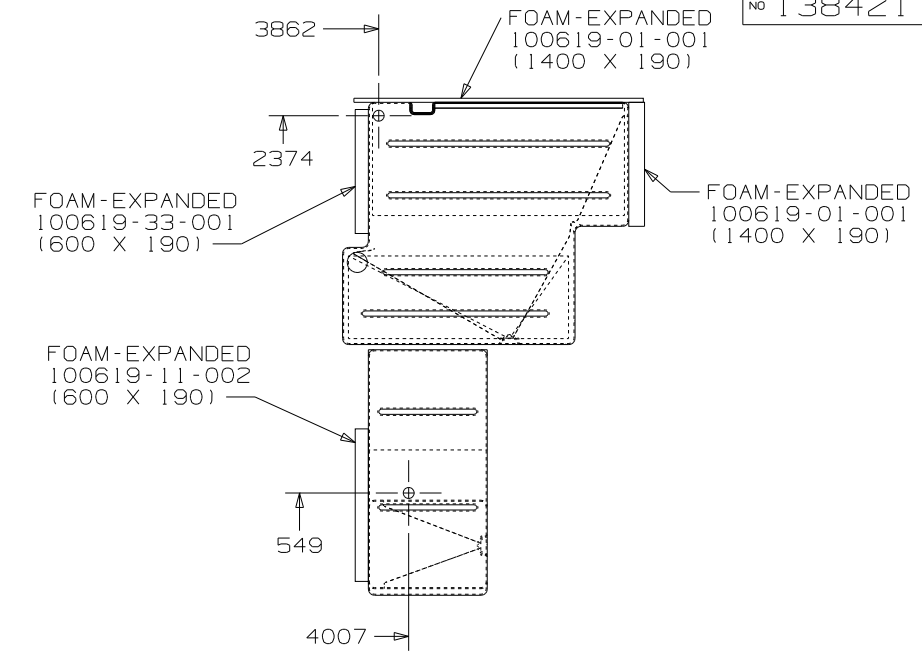
BRACKET
 136878-01-CHT

BRACKET
 136878-02-CHT

VIEW A-A

VIEW B-B

FIRST USED	02 427P
DO NOT SCALE DRAWING	
TITLE	DRAINAGE SYSTEM INSTL
SHEET 2	PART NO 138421



FIRST USED	02 427P
DO NOT SCALE DRAWING	
TITLE	DRAINAGE SYSTEM INSTL
SHEET 3	PART NO 138421

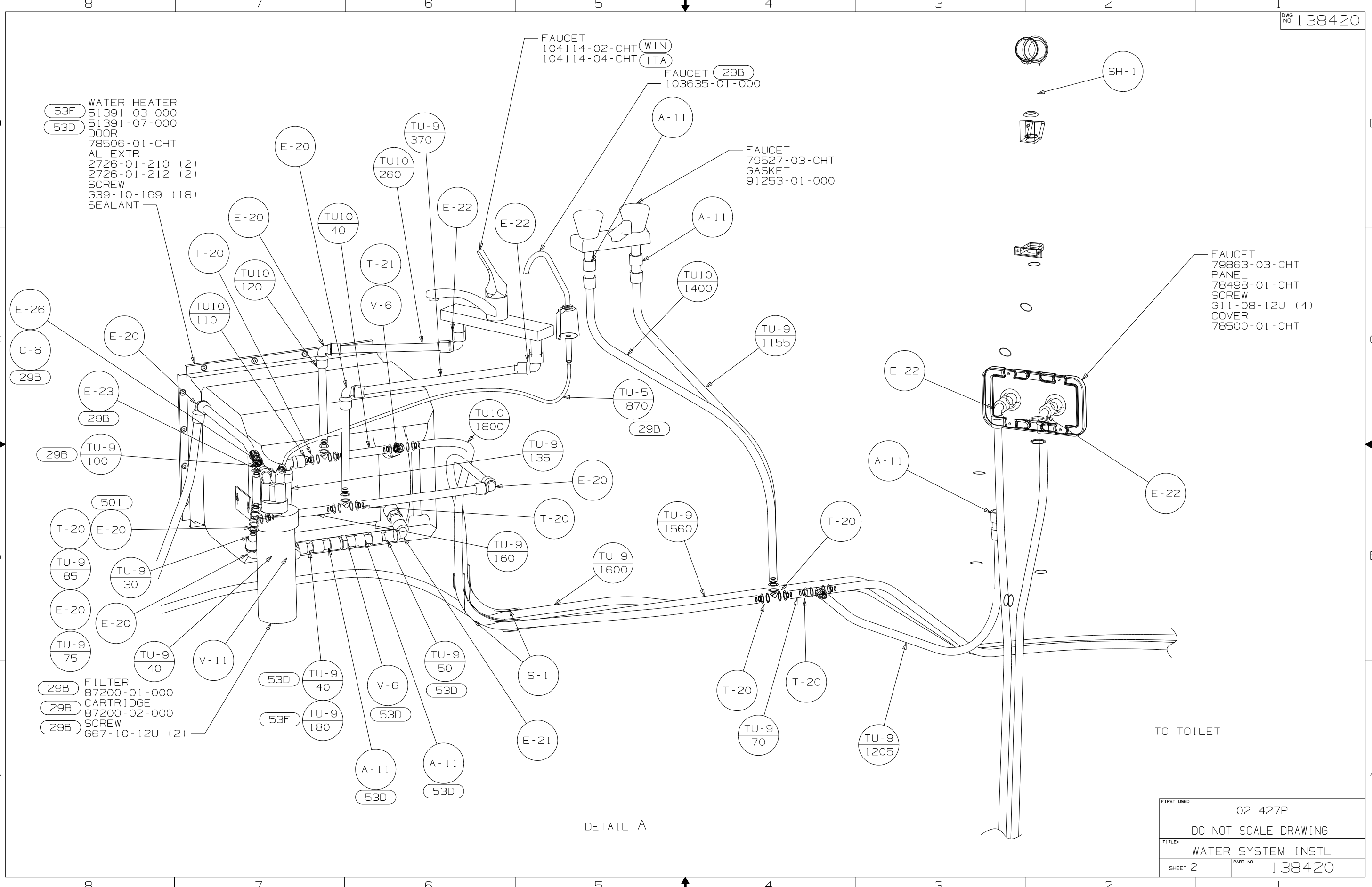
53F WATER HEATER
51391-03-000
53D 51391-07-000
DOOR
78506-01-CHT
AL EXTR
2726-01-210 (2)
2726-01-212 (2)
SCREW
639-10-169 (18)
SEALANT

FAUCET
104114-02-CHT (WIN)
104114-04-CHT (ITA)
FAUCET (29B)
103635-01-000

FAUCET
79527-03-CHT
GASKET
91253-01-000

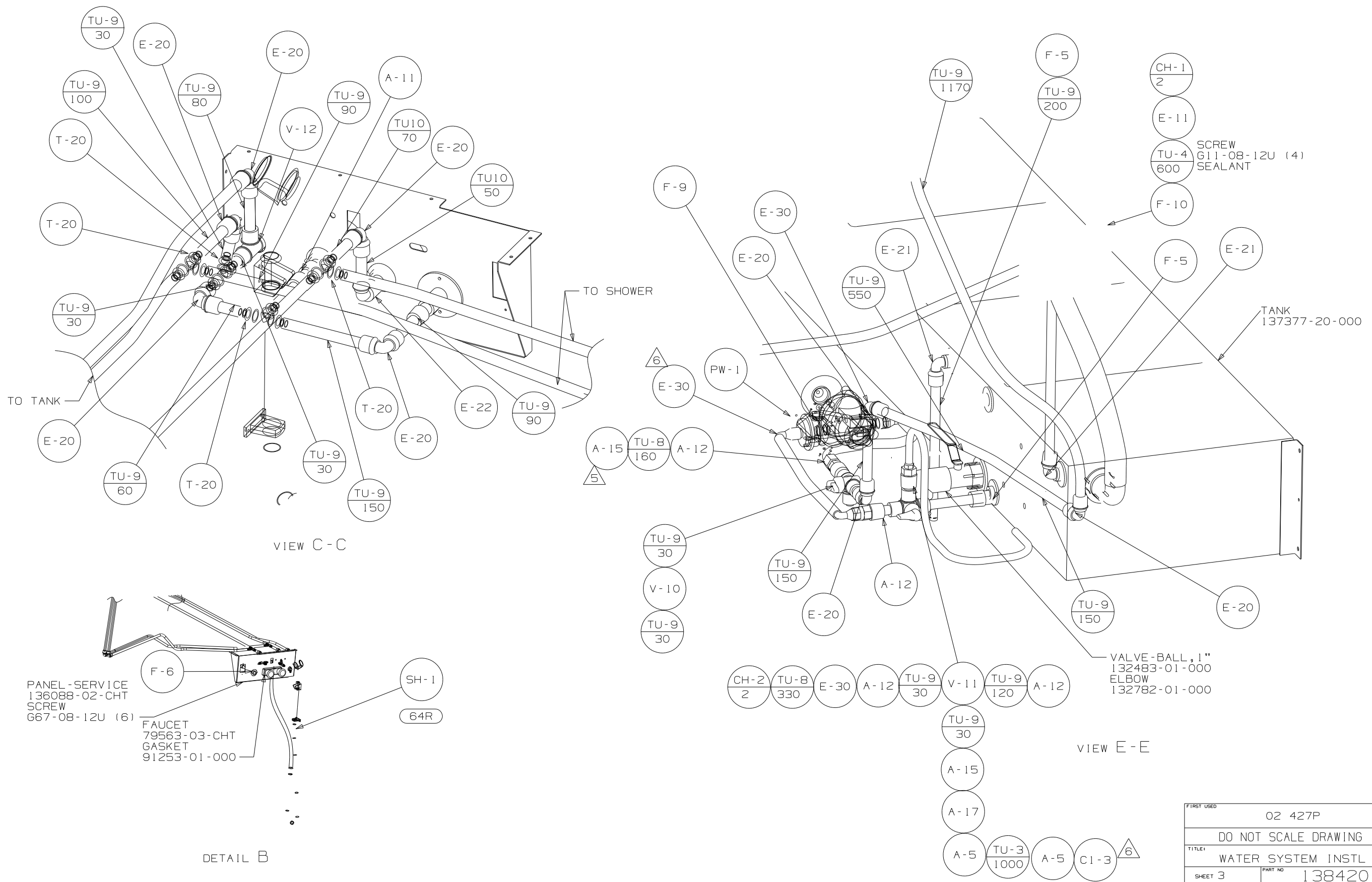
FAUCET
79863-03-CHT
PANEL
78498-01-CHT
SCREW
G11-08-12U (4)
COVER
78500-01-CHT

29B FILTER
87200-01-000
29B CARTRIDGE
87200-02-000
29B SCREW
667-10-12U (2)



DETAIL A

FIRST USED	02 427P
DO NOT SCALE DRAWING	
TITLE:	WATER SYSTEM INSTL
SHEET 2	PART NO 138420



FIRST USED	02 427P
DO NOT SCALE DRAWING	
TITLE:	WATER SYSTEM INSTL
SHEET 3	PART NO 138420