



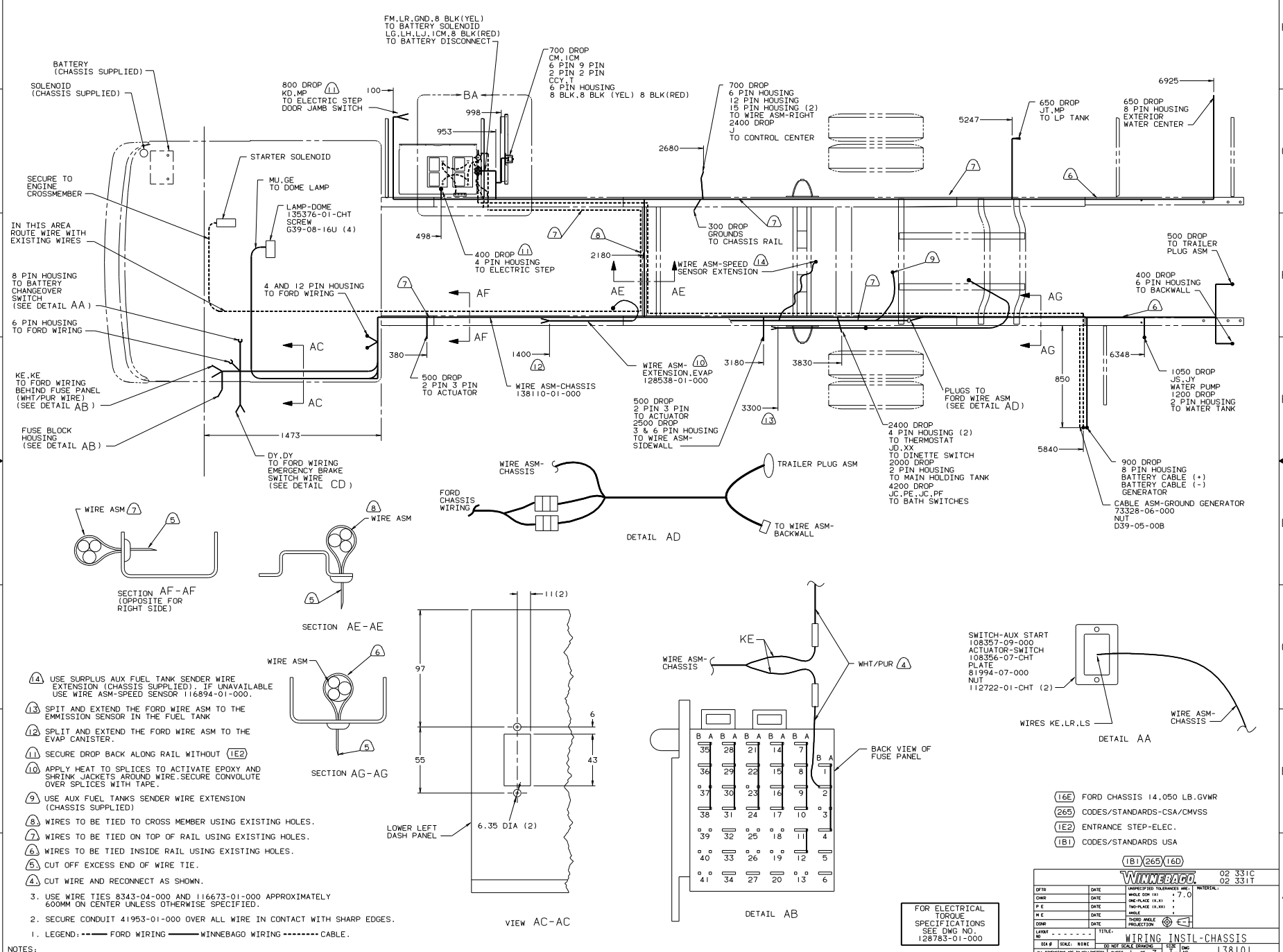
DANGER

Danger of electrical shock, burns or death. Always remove all power sources before attempting any repair, service or diagnostic work. Power can be present from shore power, generator, inverter or battery. All power sources must be disabled and secured before performing any service.



CAUTION

If you lack the skills, tools or equipment to perform diagnostic or repair work leave such work to an authorized Winnebago Industries dealer or other qualified shop.



- ④ USE SURPLUS AUX FUEL TANK SENDER WIRE EXTENSION (CHASSIS SUPPLIED). IF UNAVAILABLE USE WIRE ASM-SPEED SENSOR 116894-01-000.
 - ⑬ SPLIT AND EXTEND THE FORD WIRE ASM TO THE EMISSION SENSOR IN THE FUEL TANK
 - ⑫ SPLIT AND EXTEND THE FORD WIRE ASM TO THE EVAP CANISTER.
 - ⑪ SECURE DROP BACK ALONG RAIL WITHOUT (1E2)
 - ⑩ APPLY HEAT TO SPLICES TO ACTIVATE EPOXY AND SHRINK JACKETS AROUND WIRE. SECURE CONVOLUTE OVER SPLICES WITH TAPE.
 - ⑨ USE AUX FUEL TANKS SENDER WIRE EXTENSION (CHASSIS SUPPLIED)
 - ⑧ WIRES TO BE TIED TO CROSS MEMBER USING EXISTING HOLES.
 - ⑦ WIRES TO BE TIED ON TOP OF RAIL USING EXISTING HOLES.
 - ⑥ WIRES TO BE TIED INSIDE RAIL USING EXISTING HOLES.
 - ⑤ CUT OFF EXCESS END OF WIRE TIE.
 - ④ CUT WIRE AND RECONNECT AS SHOWN.
3. USE WIRE TIES 8343-04-000 AND 116673-01-000 APPROXIMATELY 600MM ON CENTER UNLESS OTHERWISE SPECIFIED.
2. SECURE CONDUIT 41953-01-000 OVER ALL WIRE IN CONTACT WITH SHARP EDGES.
1. LEGEND: --- FORD WIRING --- WINNEBAGO WIRING ----- CABLE.

FOR ELECTRICAL TORQUE SPECIFICATIONS SEE DWG NO. 128783-01-000

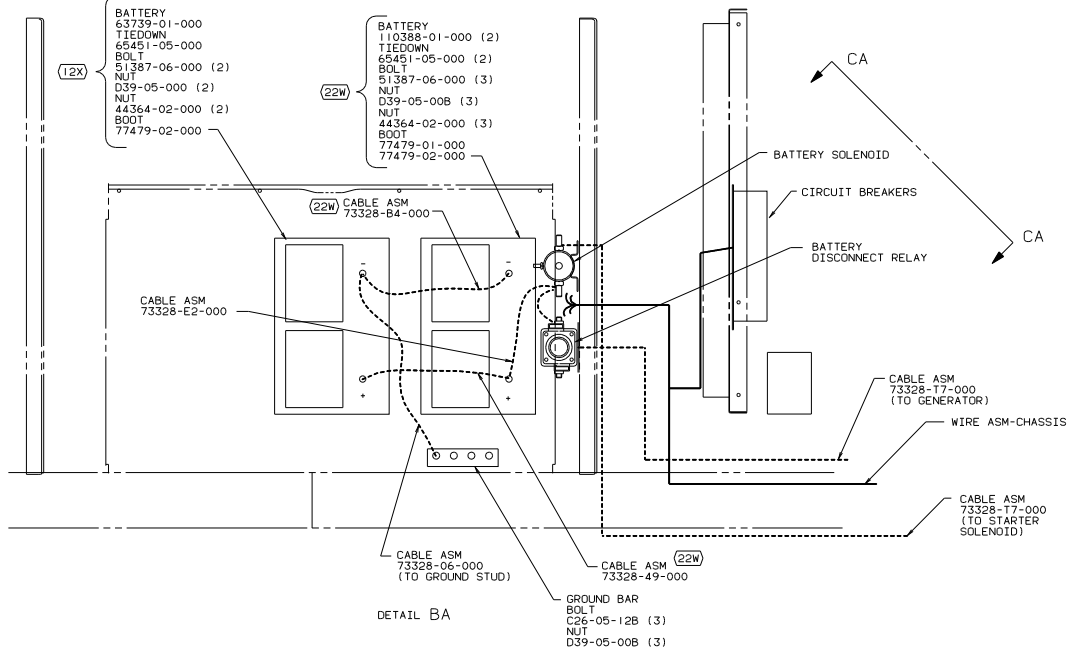
- (1E6) FORD CHASSIS 14,050 LB. GVWR
- (265) CODES/STANDARDS-CSA/CMVSS
- (1E2) ENTRANCE STEP-ELEC.
- (1B1) CODES/STANDARDS USA

WINNEBAGO

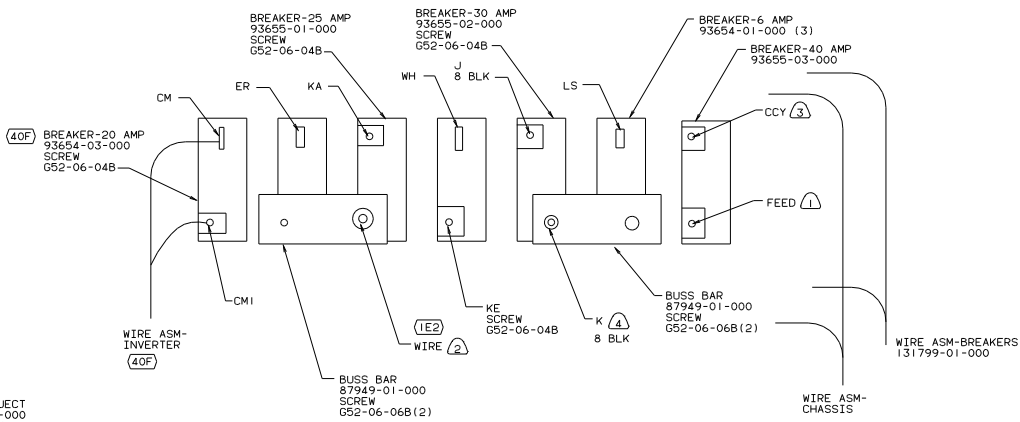
DATE: UNDESIGNED TOLERANCE ARE: MATERIAL: 02 331C
 DATE: MADE (DWG) 10.11.17.0
 DATE: SHEET-PLACE (DWG) 10.11.17.0
 DATE: SHEET-PLACE (DWG) 10.11.17.0
 DATE: SHEET-PLACE (DWG) 10.11.17.0
 DATE: SHEET-PLACE (DWG) 10.11.17.0

WIRING INSTL-CHASSIS

REF: 134797-C | PAGE 173



DETAIL BA

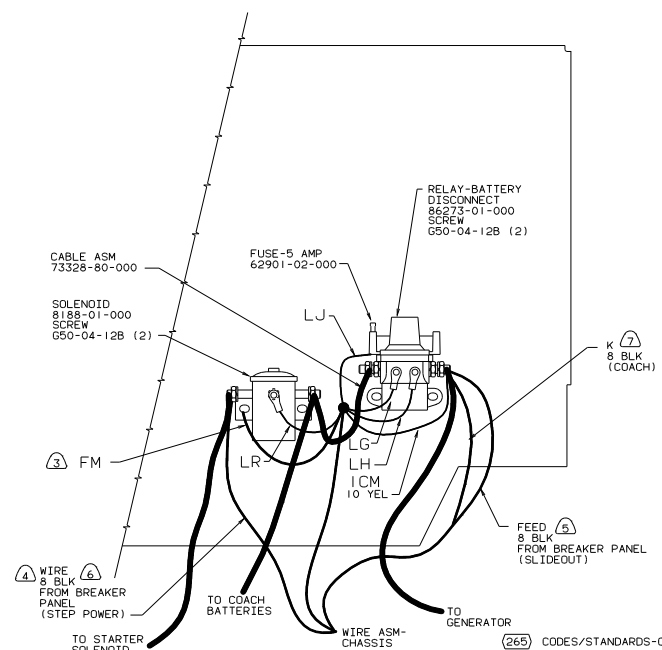
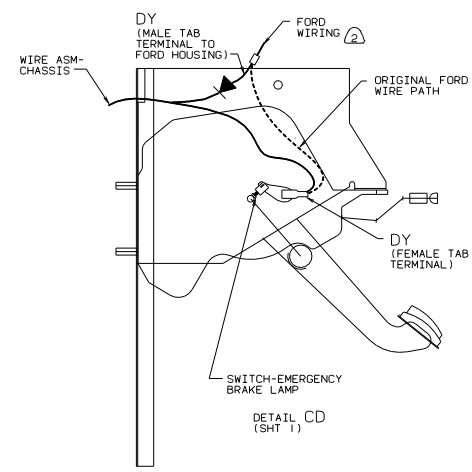
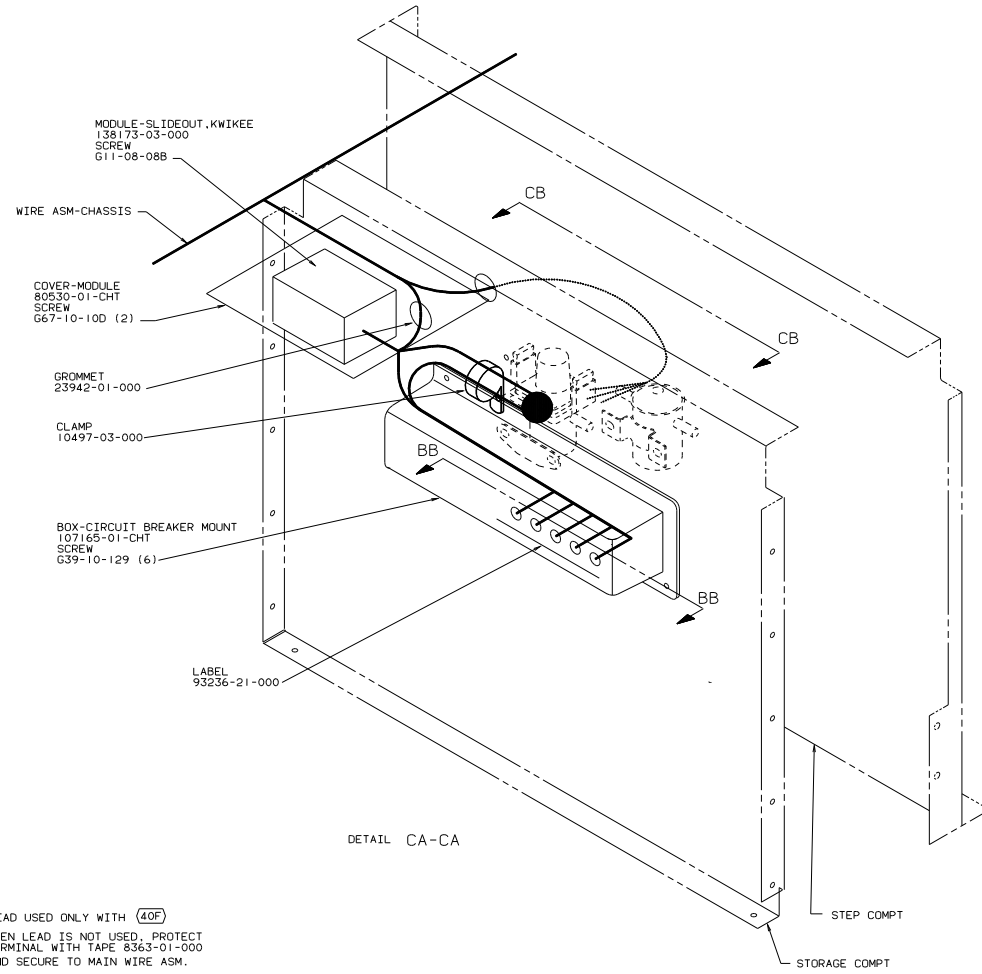


VIEW BB-BB

- NOTES:
- ⑥ LEAD USED ONLY WITH (40F) WHEN LEAD IS NOT USED, PROJECT TERMINAL WITH TAPE 8363-01-000 AND SECURE TO MAIN WIRE ASM.
 - ⑤ LEAD USED ONLY WITH (IE2) WHEN LEAD IS NOT USED, PROTECT TERMINAL WITH TAPE 8363-01-000 AND SECURE TO MAIN WIRE ASM.
 - ④ LEAD MARKED WITH PURPLE TAPE.
 - ③ LEAD MARKED WITH BLUE TAPE.
 - ② LEAD IDENTIFIED WITH YELLOW TAPE.
 - ① LEAD IDENTIFIED WITH RED TAPE

- (40F) INVERTER-DC/AC-130W
- (265) CODES/STANDARDS-CSA/CMVSS
- (22W) BATTERY-TWO
- (12X) BATTERY-ONE
- (16D) FORD CHASSIS GAS
- (IE2) ENTRANCE STEP-ELEC.
- (1B1) CODES/STANDARDS USA

FOR ELECTRICAL TORQUE SPECIFICATIONS SEE DWG NO. 128783-01-000



- ⑧ LEAD USED ONLY WITH (40F)
WHEN LEAD IS NOT USED, PROTECT TERMINAL WITH TAPE 8363-01-000 AND SECURE TO MAIN WIRE ASM.
- ⑦ LEAD MARKED WITH PURPLE TAPE.
- ⑥ LEAD IDENTIFIED WITH YELLOW TAPE.
- ⑤ LEAD IDENTIFIED WITH RED TAPE.
- ④ LEAD USED ONLY WITH (IE2)
WHEN LEAD IS NOT USED, PROTECT TERMINAL WITH TAPE 8363-01-000 AND SECURE TO MAIN WIRE ASM.
- ③ SECURE WITH SOLENOID MOUNTING BOLT.
- ② DISCONNECT THE FORD WIRING FROM THE PARK BRAKE INDICATOR SWITCH. RECONNECT CIRCUIT DY AS SHOWN.
- ① LOCATE BOX VERTICALLY BY CENTERING ON HOLE IN COMPT.

- (265) CODES/STANDARDS-CSA/CMVSS
- (160) FORD CHASSIS GAS
- (IE2) ENTRANCE STEP-ELEC.
- (1B1) CODES/STANDARDS USA

FOR ELECTRICAL TORQUE SPECIFICATIONS SEE OMP NO. 128783-01-000