



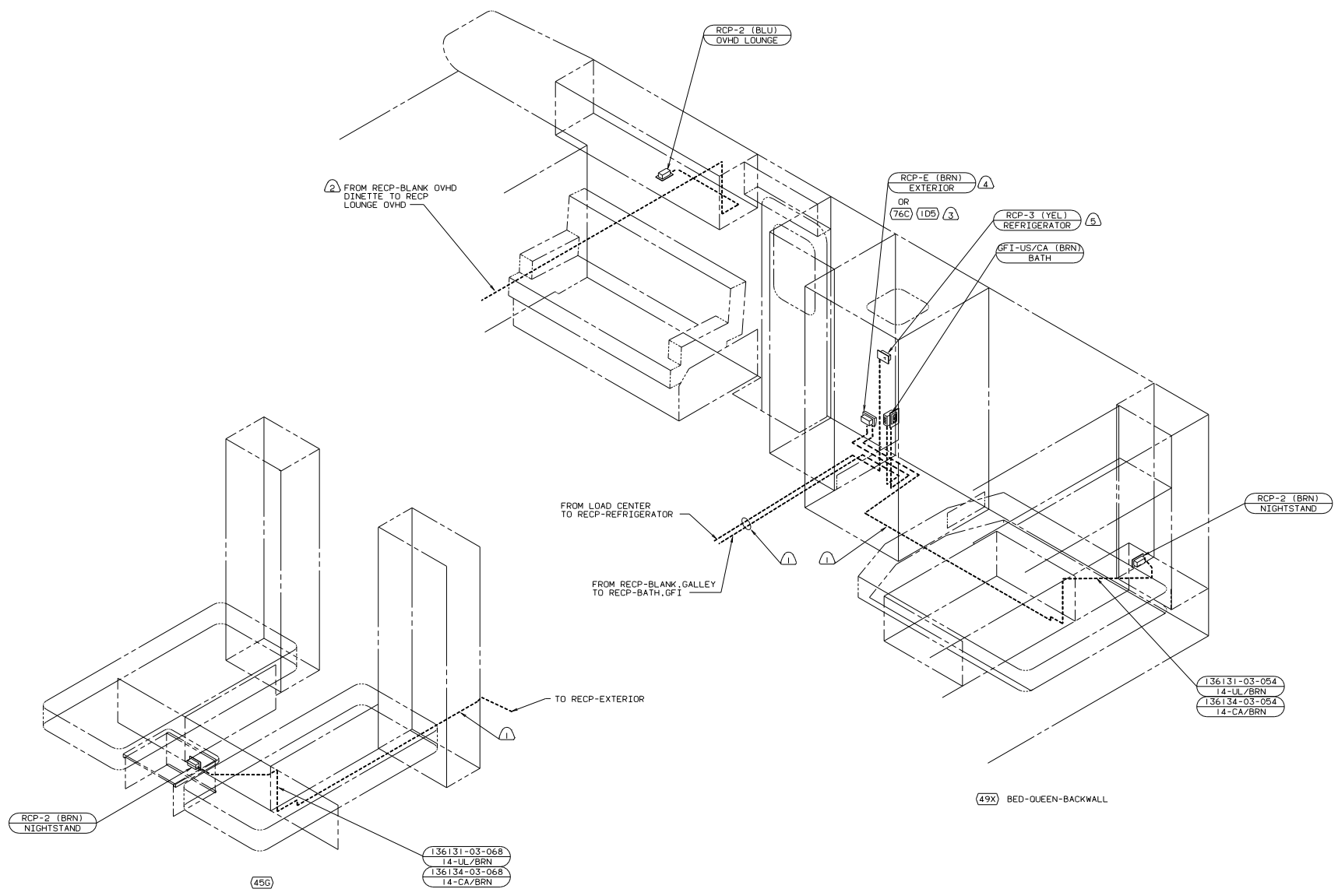
DANGER

Danger of electrical shock, burns or death. Always remove all power sources before attempting any repair, service or diagnostic work. Power can be present from shore power, generator, inverter or battery. All power sources must be disabled and secured before performing any service.



CAUTION

If you lack the skills, tools or equipment to perform diagnostic or repair work leave such work to an authorized Winnebago Industries dealer or other qualified shop.



- (5) LOCATE RECEPTACLE ON REFRIGERATOR TIE DOWN BRACKET.
- (4) NOT USED WITH (105)
- (3) SEE ENT CTR INSTL-EXT FOR ADDITIONAL INFORMATION.
- (2) WIRE ROUTED IN ROOF.
- (1) WIRE ROUTED THRU FLOOR.

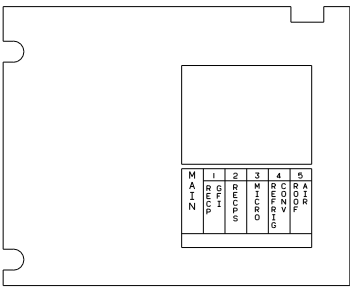
NOTES:

- (105) ENTERTAINMENT CTR/EXT W/CD
- (76C) ENTERTAINMENT CTR/EXT CSETTE
- (49X) BED-QUEEN-BACKWALL
- (45G) BED-TWINS
- (26S) CODES/STANDARDS-CSA/CMVSS
- (12D) ELECTRICAL SYSTEM 30 AMP
- (1B1) CODES STANDARDS/USA

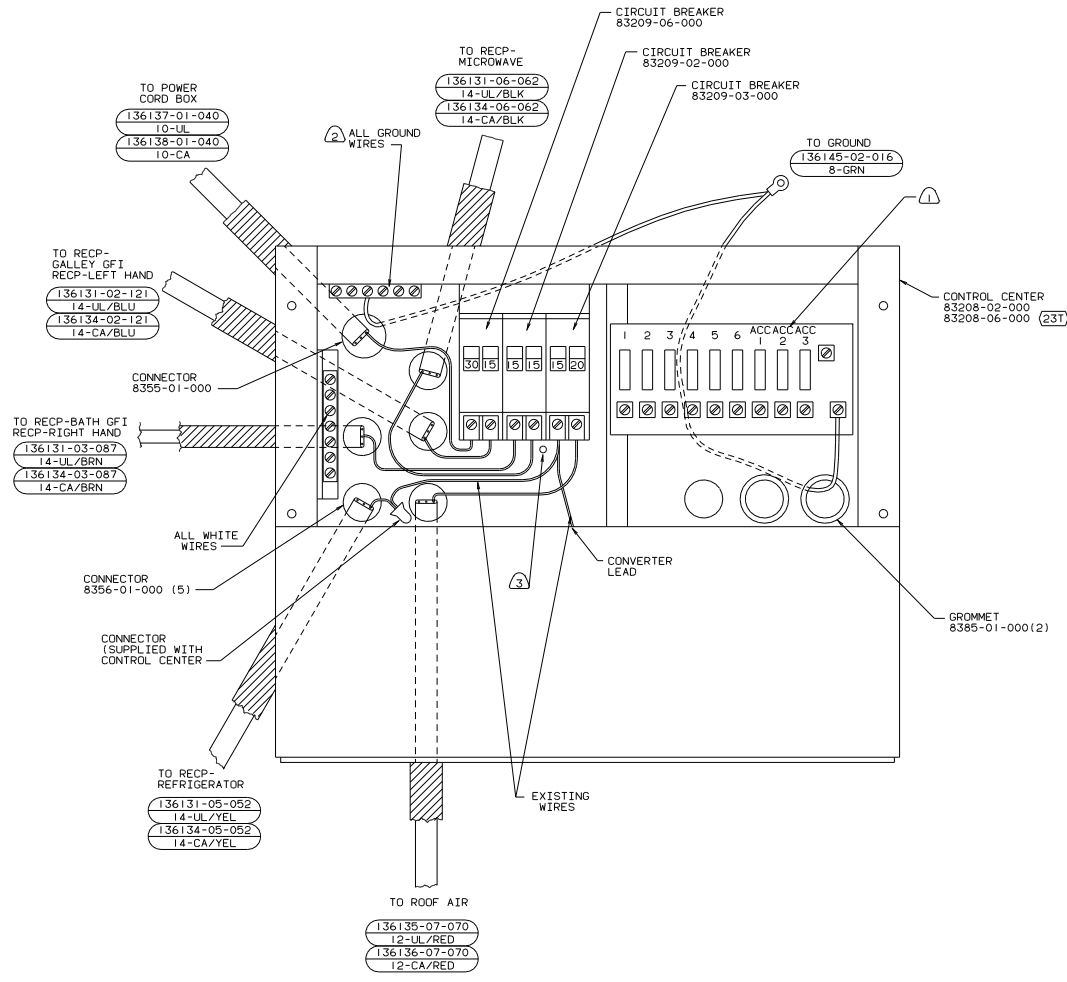
FOR ELECTRICAL TORQUE SPECIFICATIONS SEE DWG NO 128783-01-000

FOR ELECTRICAL CALLOUTS SEE DWG NO 121339-01-000

WIRING INSTL-BODY, 110 (RH)
 02 329N (1B1) (26S) (12D)
 SHEET 2 OF 3 I.F. No 140007



PANEL-COVER



- (265) CODES/STANDARDS-CSA/CMVSS
- (23T) HEATED HOLDING TANKS-PACKAGE
- (12D) ELECTRICAL SYSTEM 30 AMP
- (1B1) CODES/STANDARDS USA

- ③ SECURE WIRE BUNDLE TO LOAD CENTER-BACKSIDE-WITH WIRE TIE 116673-01-000, USING EXISTING HDLR.
- ② ALL GROUND WIRES TO BE COVERED WITH TUBING 8041-02-000.
- ① SEE WIRING INSTALLATION BODY, 12V FOR ADDITIONAL INFORMATION.

FOR ELECTRICAL TORQUE SPECIFICATIONS SEE DWG NO. 128783-01-000

FOR ELECTRICAL CALLOUTS SEE DWG NO. 121339-01-000

02 329N (1B1) (265) (12D)

WIRING INSTL-BODY, 110 (LC)
 SHEET 3 OF 3