



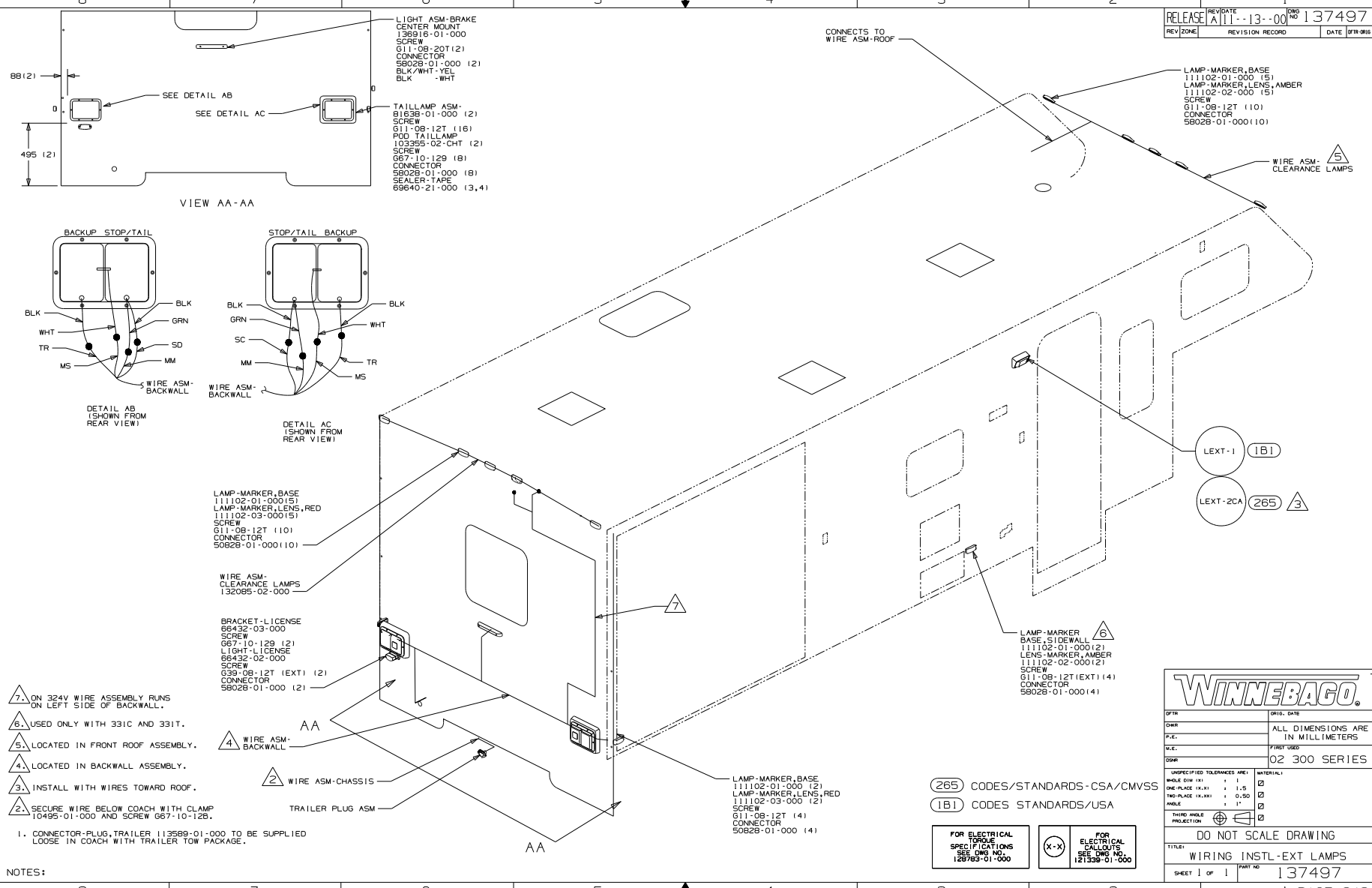
DANGER

Danger of electrical shock, burns or death. Always remove all power sources before attempting any repair, service or diagnostic work. Power can be present from shore power, generator, inverter or battery. All power sources must be disabled and secured before performing any service.



CAUTION

If you lack the skills, tools or equipment to perform diagnostic or repair work leave such work to an authorized Winnebago Industries dealer or other qualified shop.



- 1. ON 324V WIRE ASSEMBLY RUNS ON LEFT SIDE OF BACKWALL.
- 2. USED ONLY WITH 331C AND 331T.
- 3. LOCATED IN FRONT ROOF ASSEMBLY.
- 4. LOCATED IN BACKWALL ASSEMBLY.
- 5. INSTALL WITH WIRES TOWARD ROOF.
- 6. SECURE WIRE BELOW COACH WITH CLAMP 10495-01-000 AND SCREW G67-10-129.

NOTES:

WINNEBAGO

QTR	ORIG. DATE
DWR	ALL DIMENSIONS ARE IN MILLIMETERS
P.E.	FIRST USED
V.E.	
DWG	02 300 SERIES

UNSPECIFIED TOLERANCES ARE:
 HOLE DIA (X.X) ± .1
 ONE-PLACE (X.XX) ± 1.5
 TWO-PLACE (X.XXX) ± 0.50
 HOLE ± .12

MATERIAL:
 303
 304
 304L
 316
 316L
 304 STAINLESS
 316 STAINLESS
 304 ALUMINUM
 316 ALUMINUM

THIRD ANGLE PROJECTION

DO NOT SCALE DRAWING

TITLE: WIRING INSTL-EXT LAMPS

SHEET 1 of 1 PART NO 137497