



DANGER

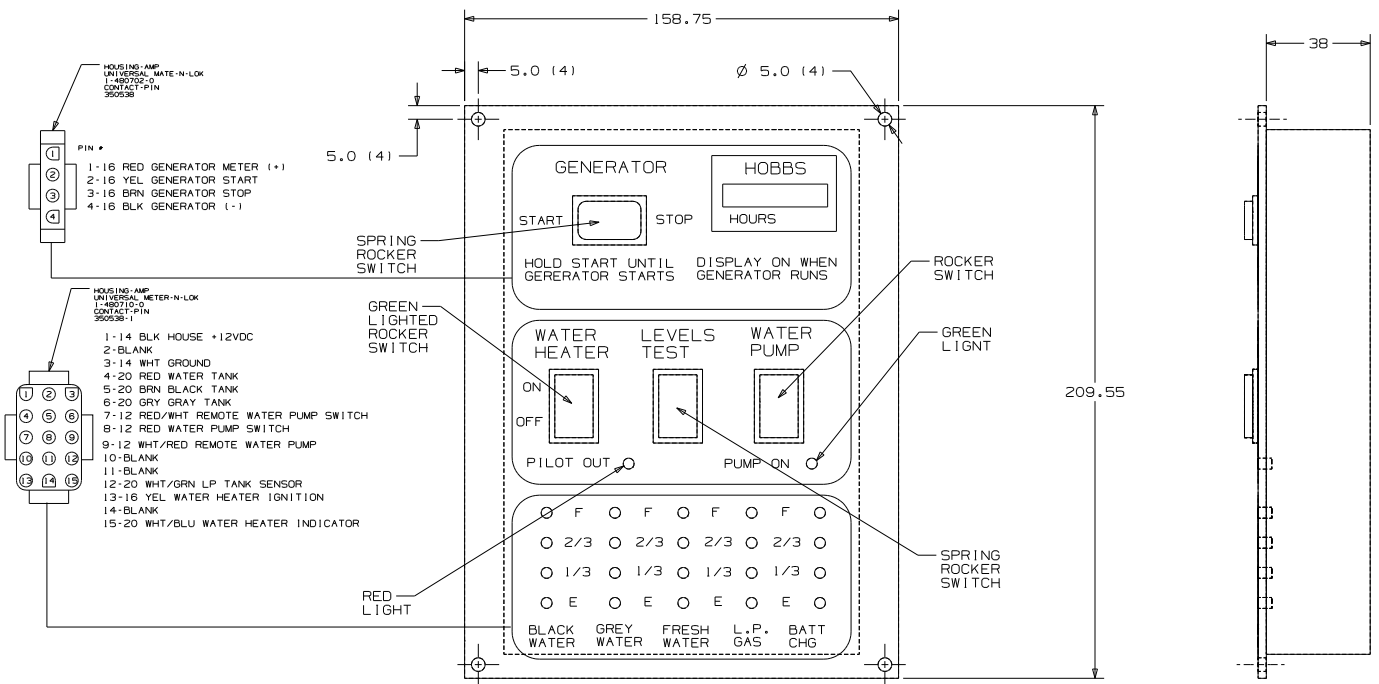
Danger of electrical shock, burns or death. Always remove all power sources before attempting any repair, service or diagnostic work. Power can be present from shore power, generator, inverter or battery. All power sources must be disabled and secured before performing any service.



CAUTION

If you lack the skills, tools or equipment to perform diagnostic or repair work leave such work to an authorized Winnebago Industries dealer or other qualified shop.

DWG NO	W/GEN	SHEET
134940-01	W/GEN	1
134940-02	W/O GEN	2
134940-03	SWITCH/METER	---
134940-04	W/GEN & SOLAR	3
134940-05	W/SW & W/O METER	4



- NOTES:
1. SUGGESTED VENDOR: VENTLINE.
 2. BLACK PANEL WITH WHITE GRAPHICS.
 3. LETTERS ON MAIN HEADING TO BE 5MM HIGH.
 4. CUTOUT 130 X 192.
 5. SWITCH RATING SHALL BE EMBOSSED ON THE SIDE OF THE 12V SWITCHES.

SEE CHART
 FOR COLOR VARIATIONS
 OF THIS PART

WINNEBAGO

DTB 11/05/99

ORIG. DATE 11/05/99

CHDR ALL DIMENSIONS ARE IN MILLIMETERS

P.E.

V.E. FIRST USED

DTB 300 & F SER

UNSPECIFIED TOLERANCES ARE:

HOLES Ø10-125	± .1	MATERIAL:
ONE-PLACE (EXC.)	± 1.5	
TWO-PLACE (EXC.)	± 0.50	
FINISH	± .1"	

THIRD ANGLE PROJECTION

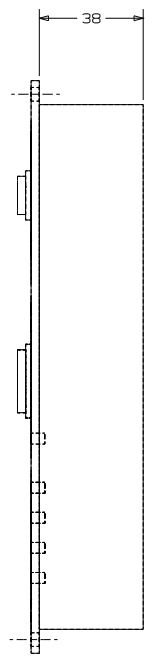
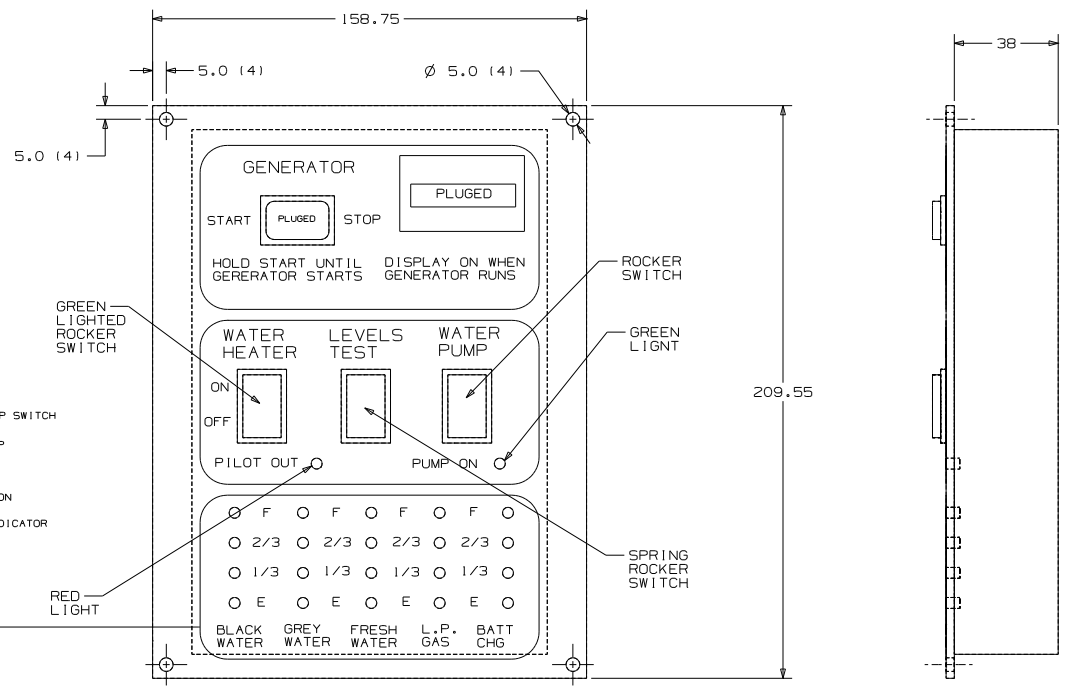
DO NOT SCALE DRAWING

TITLE: PANEL-MONITOR 2-TANK

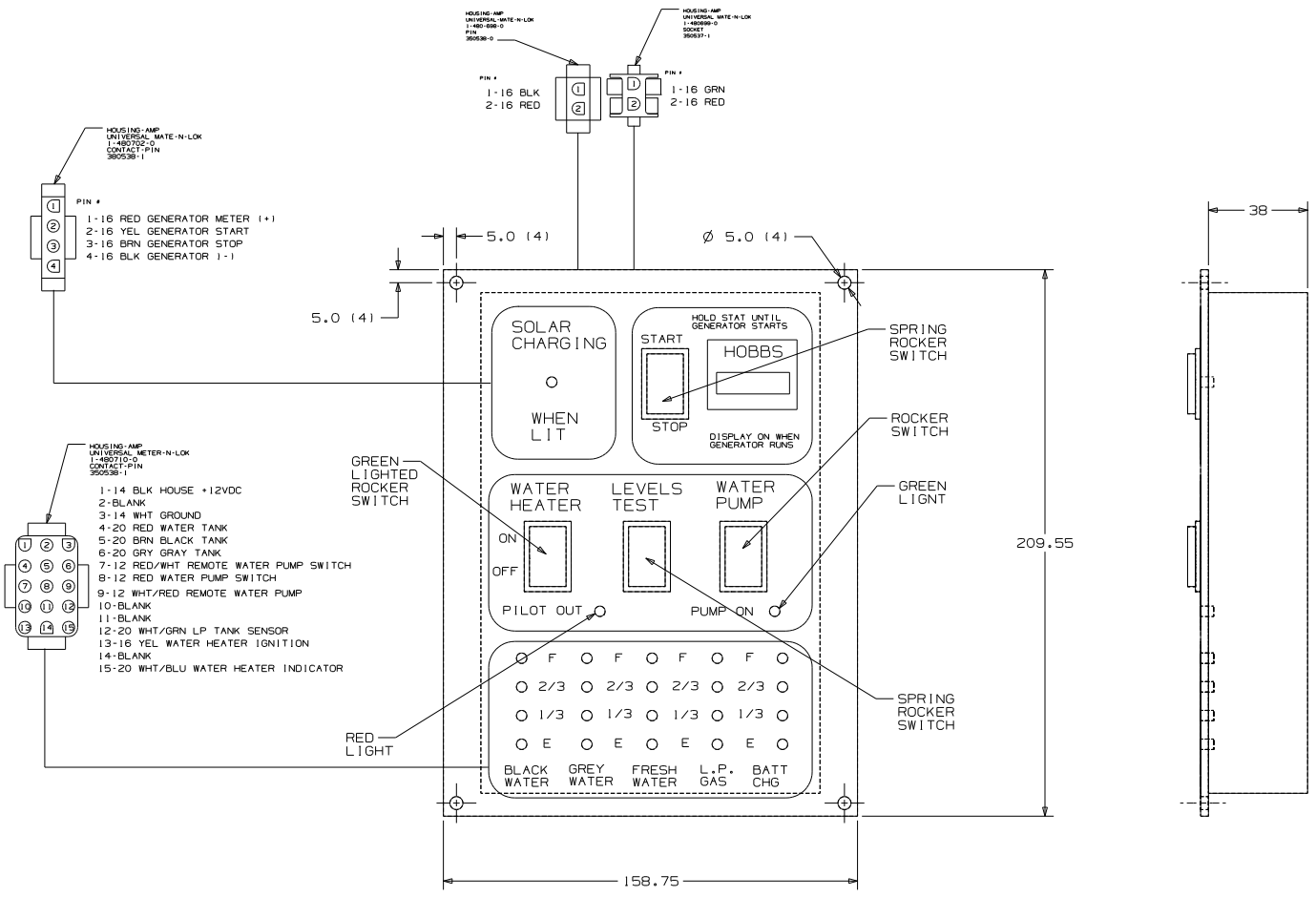
SHEET 1 of 4 PART NO 134940

REF: 1 PAGE 271

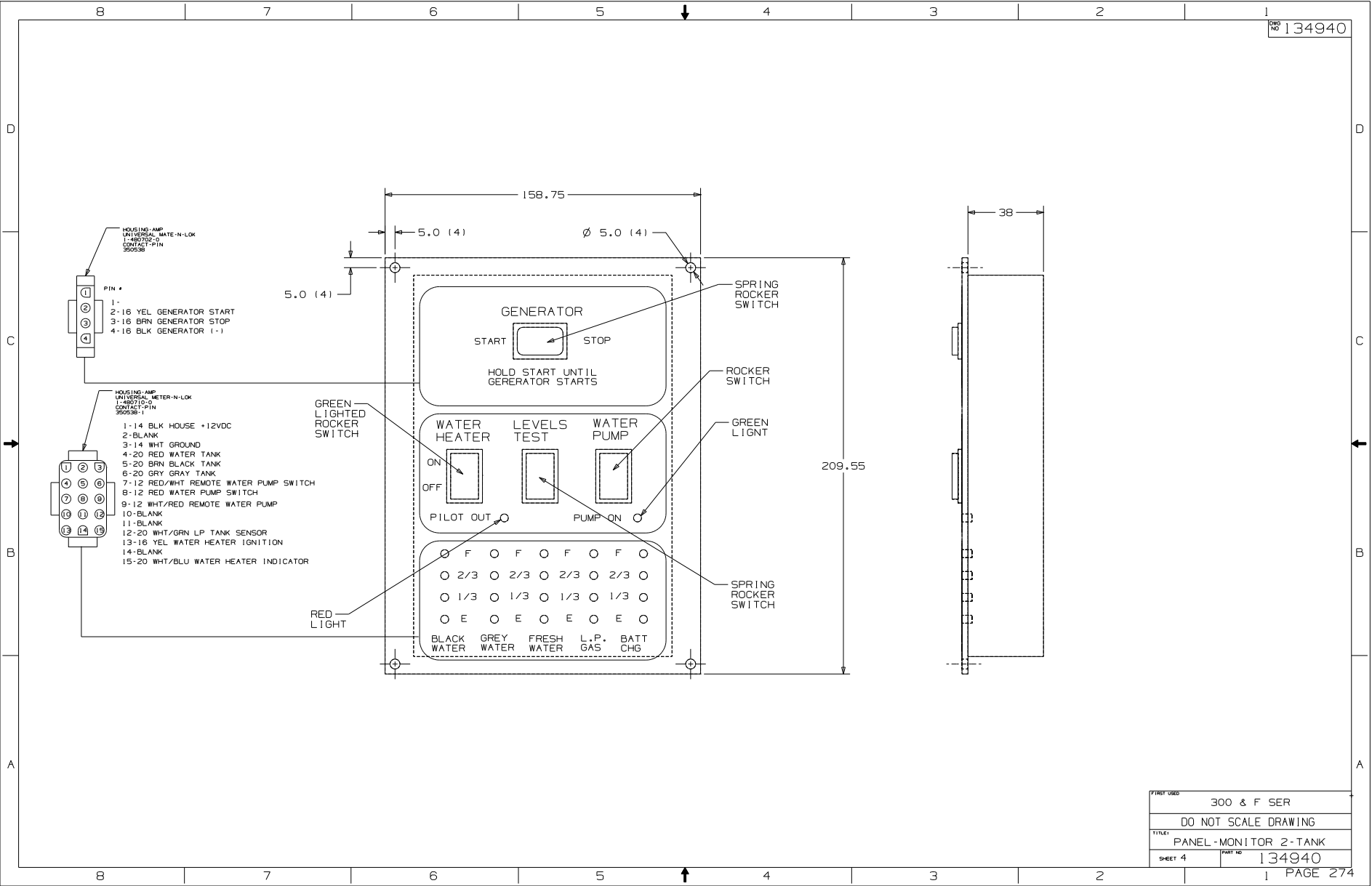
- HOUSING-AMP
SWITCHES-METER-N-LOK
1-482710-01
CONTACT-PIN
350538-1
- 1-14 BLK HOUSE +12VDC
 - 2-BLANK
 - 3-14 WHT GROUND
 - 4-20 RED WATER TANK
 - 5-20 BRN BLACK TANK
 - 6-20 GRY GRAY TANK
 - 7-12 RED/WHY REMOTE WATER PUMP SWITCH
 - 8-12 RED WATER PUMP SWITCH
 - 9-12 WHY/RED REMOTE WATER PUMP
 - 10-BLANK
 - 11-BLANK
 - 12-20 WHY/GRN LP TANK SENSOR
 - 13-16 YEL WATER HEATER IGNITION
 - 14-BLANK
 - 15-20 WHY/BLU WATER HEATER INDICATOR



FIRST USED	300 & F SER
DO NOT SCALE DRAWING	
TITLE: PANEL-MONITOR 2-TANK	
SHEET 2	PART NO 134940



FIRST USED	300 & F SER
DO NOT SCALE DRAWING	
TITLE: PANEL-MONITOR 2-TANK	
SHEET 3	PART NO 134940



- HOUSING-AMP
UNI-DIRECTIONAL WATE-N-LOK
I-482725-0
CONTACT-PIN
350538
- PIN #
- 1-
 - 2-16 YEL GENERATOR START
 - 3-16 BRN GENERATOR STOP
 - 4-16 BLK GENERATOR (-)

- HOUSING-AMP
UNI-DIRECTIONAL METER-N-LOK
I-482710-0
CONTACT-PIN
350538-1
- 1-14 BLK HOUSE +12VDC
 - 2-BLANK
 - 3-14 WHT GROUND
 - 4-20 RED WATER TANK
 - 5-20 BRN BLACK TANK
 - 6-20 GRY GRAY TANK
 - 7-12 RED/WHT REMOTE WATER PUMP SWITCH
 - 8-12 RED WATER PUMP SWITCH
 - 9-12 WHT/RED REMOTE WATER PUMP
 - 10-BLANK
 - 11-BLANK
 - 12-20 WHT/GRN LP TANK SENSOR
 - 13-16 YEL WATER HEATER IGNITION
 - 14-BLANK
 - 15-20 WHT/BLU WATER HEATER INDICATOR

GREEN LIGHTED
ROCKER
SWITCH

RED LIGHT

GENERATOR

START STOP

HOLD START UNTIL
GENERATOR STARTS

WATER HEATER LEVELS TEST WATER PUMP

ON OFF ON OFF ON OFF

PILOT OUT PUMP ON

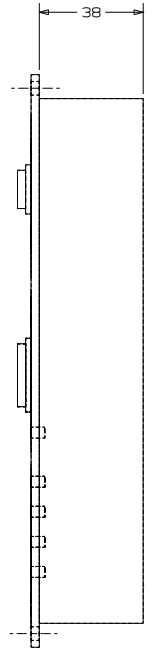
○	F	○	F	○	F	○	F	○	F	○
○	2/3	○	2/3	○	2/3	○	2/3	○	2/3	○
○	1/3	○	1/3	○	1/3	○	1/3	○	1/3	○
○	E	○	E	○	E	○	E	○	E	○
	BLACK		GREY		FRESH		L.P.		BATT	
	WATER		WATER		WATER		GAS		CHG	

SPRING
ROCKER
SWITCH

ROCKER
SWITCH

GREEN
LIGHT

SPRING
ROCKER
SWITCH



FIRST USED	300 & F SER
DO NOT SCALE DRAWING	
TITLE: PANEL-MONITOR 2-TANK	
SHEET 4	PART NO 134940