



DANGER

Danger of electrical shock, burns or death. Always remove all power sources before attempting any repair, service or diagnostic work. Power can be present from shore power, generator, inverter or battery. All power sources must be disabled and secured before performing any service.

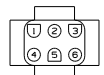


CAUTION

If you lack the skills, tools or equipment to perform diagnostic or repair work leave such work to an authorized Winnebago Industries dealer or other qualified shop.

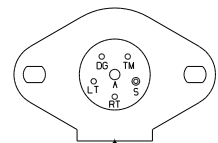
CONNECTS TO WIRE ASM-
 SIDEWALL (LF)
 (SHT 2, A-7)
 (LOCATED IN LOWER
 GALLEY CABT.)

- 1-JC 14 YEL
- 2-NC 14 WHT
- 3-LA 16 YEL
- 4-HX 16 YEL
- 5-MS 14 WHT
- 6-LS 16 WHT



JC NC MS LC LA HX

CONNECTS TO TRAILER HITCH PLUG



- DG-MS 14 WHT
- TM-HW 16 YEL
- S-X 16 YEL
- RT-SC 16 YEL
- LT-SD 16 YEL
- A-TR 16 YEL

MS HW TR X SD SC

CONNECTS TO WIRE ASM-BACKWALL
 (LOCATED BELOW LAVATORY CABT)

- 1-SC 16 YEL
- 2-X 16 YEL
- 3-SD 16 YEL



SC SD X

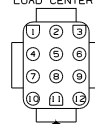
CONNECTS TO WIRE ASM-CHASSIS
 (SHT 2, C-4)
 (LOCATED BEHIND
 LOAD CENTER)



- 1-TR 16 YEL
- 2-MM 16 YEL
- 3-MS 14 WHT

MS TR MM

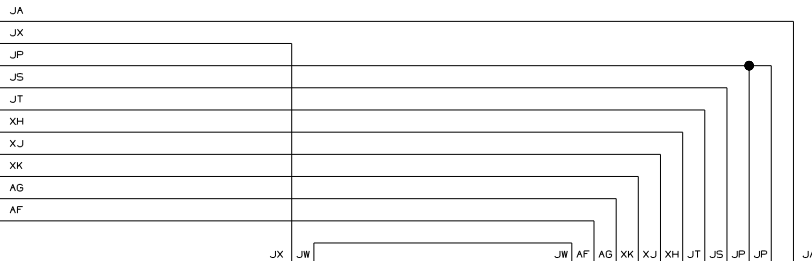
CONNECTS TO WIRE ASM-CHASSIS
 (SHT 2, C-4)
 (LOCATED BEHIND
 LOAD CENTER)



- 1-HX 16 YEL
- 2-SC 16 YEL
- 3-SD 16 YEL
- 4-HW 16 YEL
- 5-LS 12 YEL
- 6-X 16 YEL
- 7-MM 16 YEL
- 8-KK 16 YEL
- 9-LB 16 YEL
- 10-TR 16 YEL
- 11-LA 16 YEL
- 12-LC 16 WHT

SC SD X TR HW HX LA LC KK LB LS

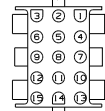
JC
 KX
 LB
 LS
 MS
 NC



- 1-JW 14 YEL
- 2-JX 14 WHT
- 3-JU 14 YEL

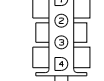
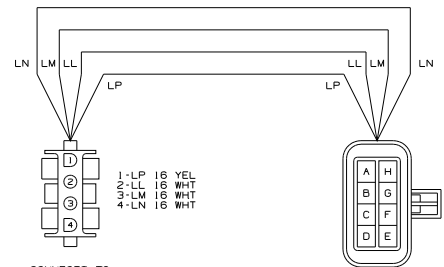
CONNECTS TO WATER HEATER
 (LOCATED IN LOWER
 WARDROBE CABT.)

- 1-JA 12 YEL
- 2-JP 14 WHT
- 3-JK 16 YEL
- 4-XH 16 YEL
- 5-XJ 16 YEL
- 6-XK 16 YEL
- 7-AG 12 YEL
- 8-JS 12 YEL
- 9-AF 12 YEL
- 10-
- 11-JP 14 WHT
- 12-JT 16 YEL
- 13-JW 14 YEL
- 14-
- 15-JU 14 YEL



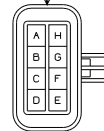
CONNECTS TO MONITOR PANEL

TO WIRE ASM SIDEWALL (LOCATED BELOW REAR DINETTE SEAT)
 RED TO POWER CORD COMPARTMENT



- 1-LP 16 YEL
- 2-LL 16 WHT
- 3-LM 16 WHT
- 4-LN 16 WHT

CONNECTS TO MONITOR PANEL



- A-LN 16 WHT
- B-LM 16 WHT
- C-LL 16 WHT
- D-
- E-
- F-LP 16 YEL
- G-
- H-

CONNECTS TO GENERATOR
 (LOCATED IN LEFT REAR
 CORNER OF GENERATOR)

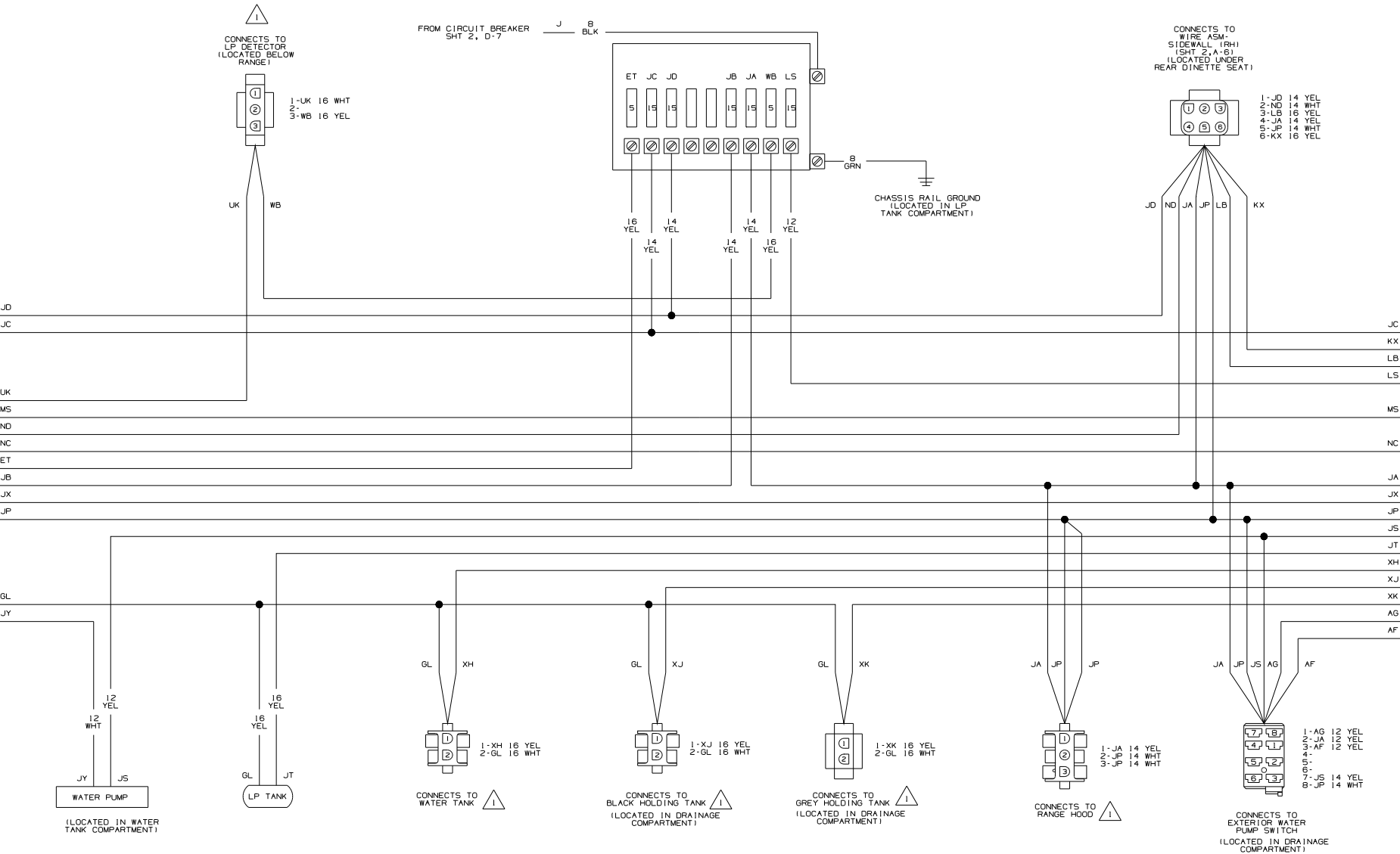
WIRING DIAGRAM-COACH
 (WIRE ASM 139491)

WINNEBAGO

DATE: 08/14/01
 ALL DIMENSIONS ARE IN MILLIMETERS
 PART NO: 02 221B
 UNSPECIFIED TOLERANCES ARE:
 MATEL: *
 FINISH: *
 THIRD ANGLE PROJECTION

DO NOT SCALE DRAWING
 WIRING DIAGRAM-BODY, 12V
 SHEET 1 OF 3 PART NO 139488

12V FUSE PANEL

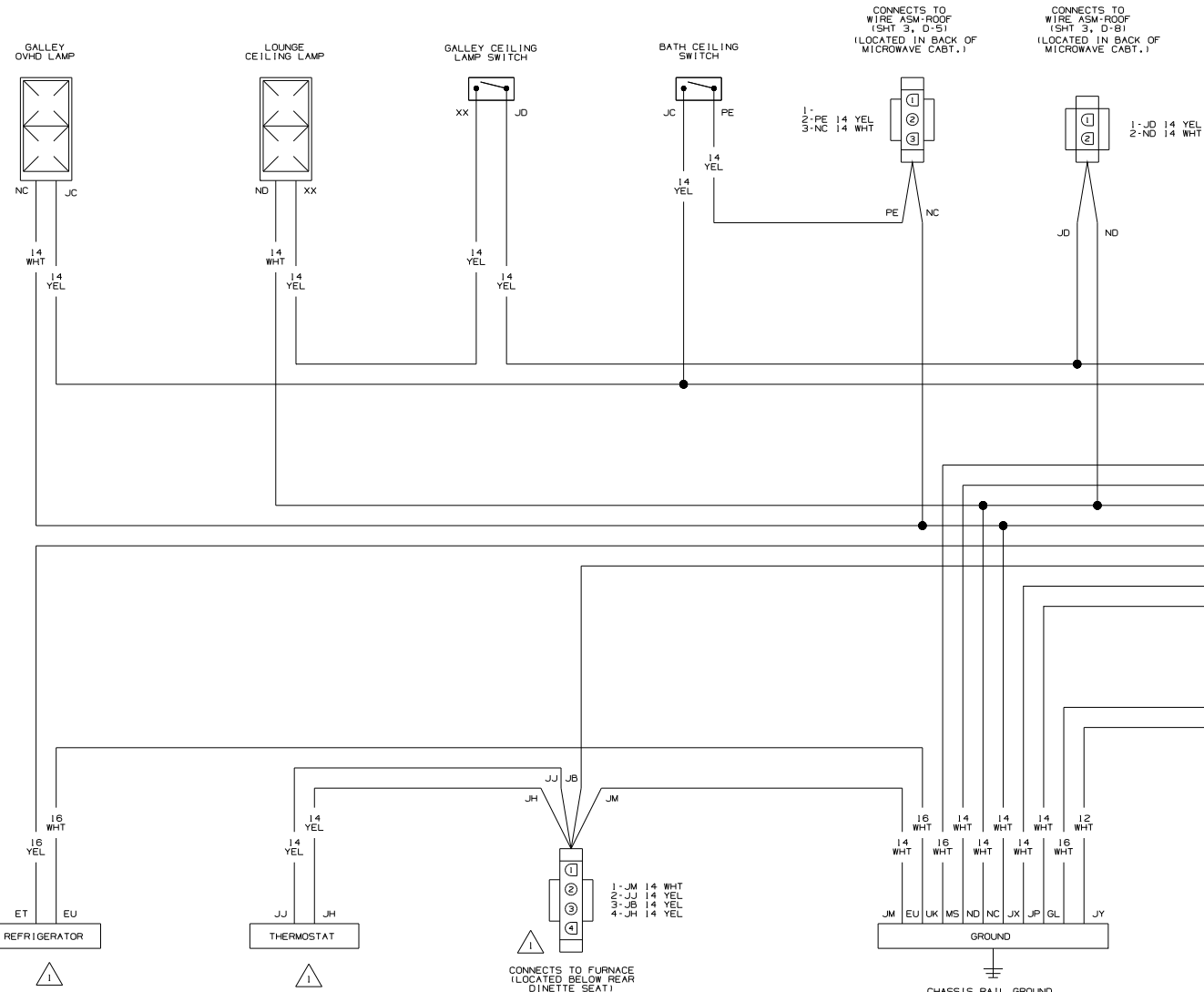


D

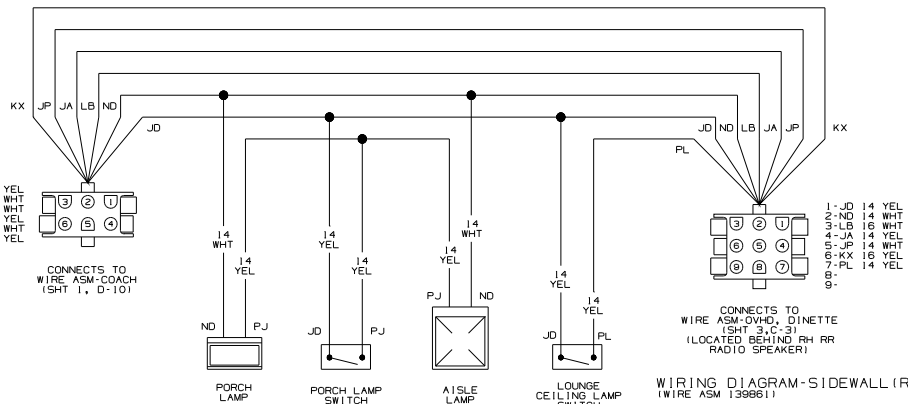
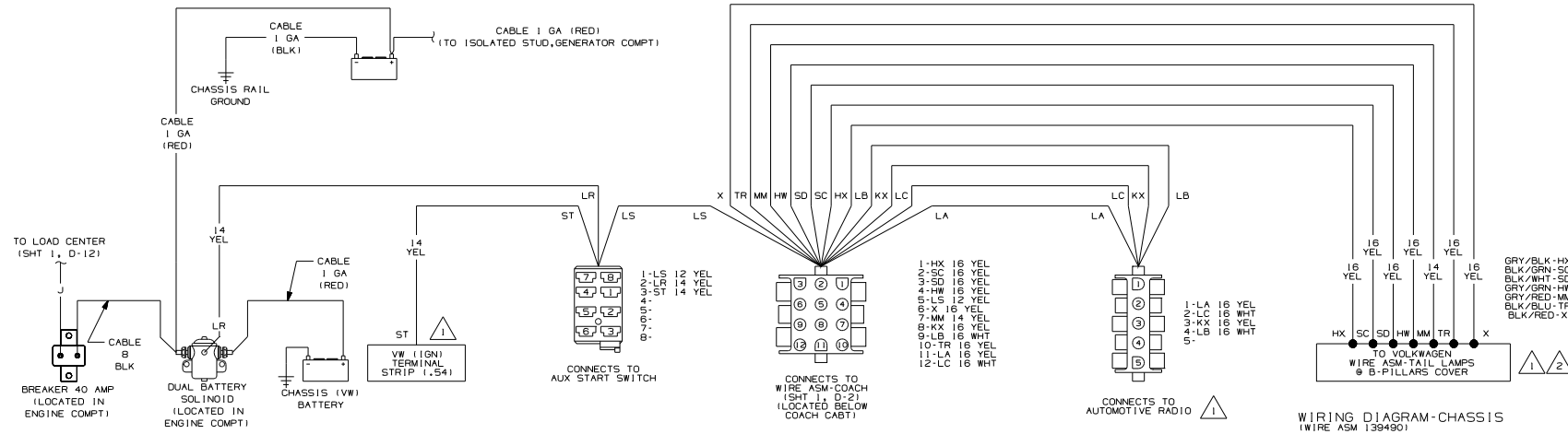
C

B

A

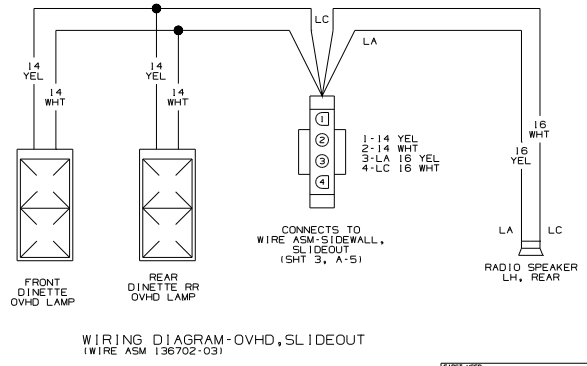
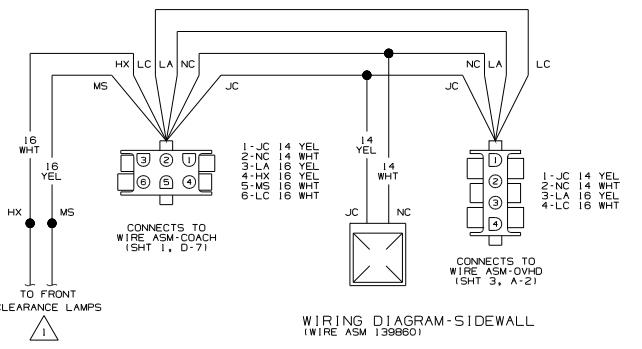
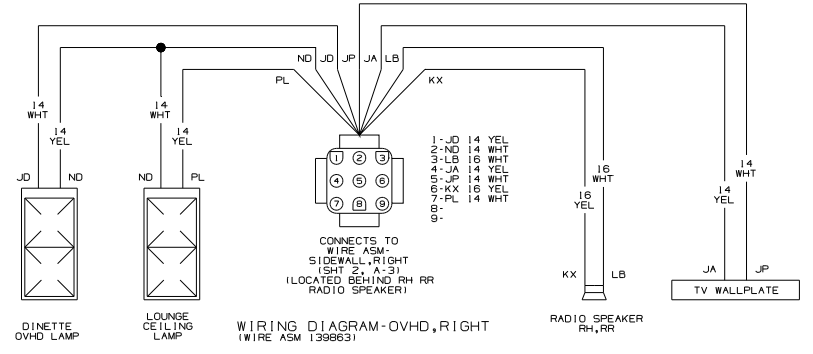
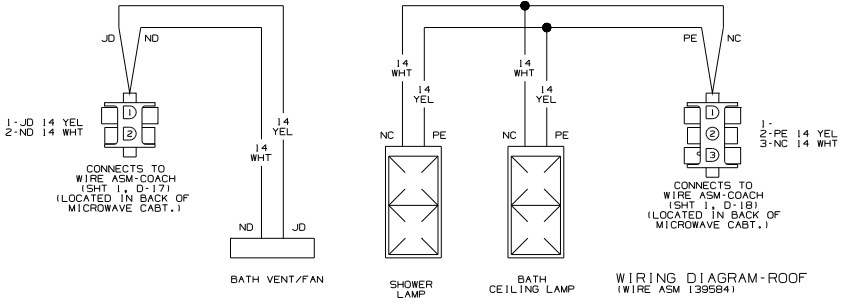


2 SEE WIRING DIAGRAM-AUTO LAMPS.
 1 SEE MANUFACTURES DIAGRAM.
 NOTES:



2 SEE WIRING DIAGRAM-AUTO LAMPS.
1 SEE MANUFACTURERS DIAGRAM.

FIRST USED	02 221B
DO NOT SCALE DRAWING	
TITLE: WIRING DIAGRAM-BODY,12V	
SHEET 2	PART NO 139488



1 SEE WIRING DIAGRAM-AUTO LAMPS

FIRST USED	02 221B
TITLE:	DO NOT SCALE DRAWING
	WIRING DIAGRAM-BODY, 12V
SHEET 3	PART NO 139488