



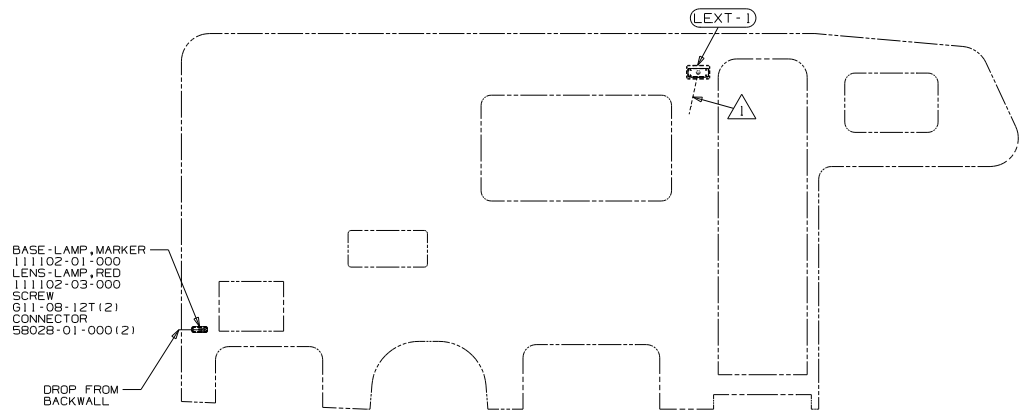
**DANGER**

**Danger of electrical shock, burns or death.** Always remove all power sources before attempting any repair, service or diagnostic work. Power can be present from shore power, generator, inverter or battery. All power sources must be disabled and secured before performing any service.



**CAUTION**

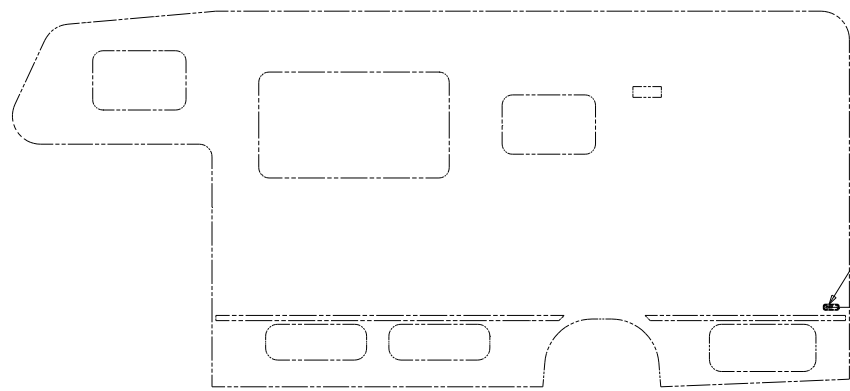
If you lack the skills, tools or equipment to perform diagnostic or repair work leave such work to an authorized Winnebago Industries dealer or other qualified shop.



BASE-LAMP, MARKER  
 111102-01-000  
 LENS-LAMP, RED  
 111102-03-000  
 SCREW  
 G11-08-12T(2)  
 CONNECTOR  
 58028-01-000(2)

DROP FROM  
 BACKWALL

LEXT-1



BASE-LAMP, MARKER  
 111102-01-000  
 LENS-LAMP, RED  
 111102-03-000  
 SCREW  
 G11-08-12T(2)  
 CONNECTOR  
 58028-01-000(2)

DROP FROM  
 BACKWALL

X-X  
 FOR ELECTRICAL  
 CALLOUTS  
 SEE DWG NO.  
 121339-01-000

FOR ELECTRICAL  
 TORQUE  
 SPECIFICATIONS  
 SEE DWG NO.  
 128783-01-000

(285) CODES/STANDARDS CSA  
 (1B1) CODES/STANDARDS USA  
 (1B1) (285)

**WINNEBAGO**

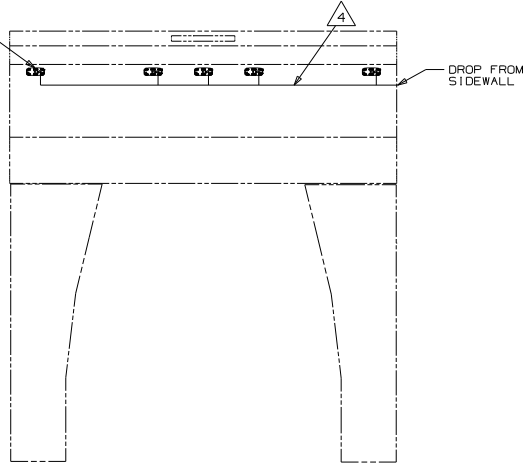
QTR	ORIG. DATE	05/31/01
DWR	ALL DIMENSIONS ARE IN MILLIMETERS	
P.E.		
M.E.	FIRST USED	
DWR	02 221B	

UNSPECIFIED TOLERANCES ARE:	MATERIAL:
THREE PLACE (X.XX)	
ONE PLACE (X.X)	
TWO PLACE (X.XX)	
THREE PLACE (X.XXX)	
THREE PLACE (X.XXX)	
THIRD ANGLE PROJECTION	

DO NOT SCALE DRAWING  
 TITLE: WIRING INSTL-EXTERIOR LAMPS  
 SHEET 1 of 2 PART NO 139484  
 REF: 1 PAGE 59

NOTES:  
 1 WIRE IS INTEGRAL TO SIDEWALL

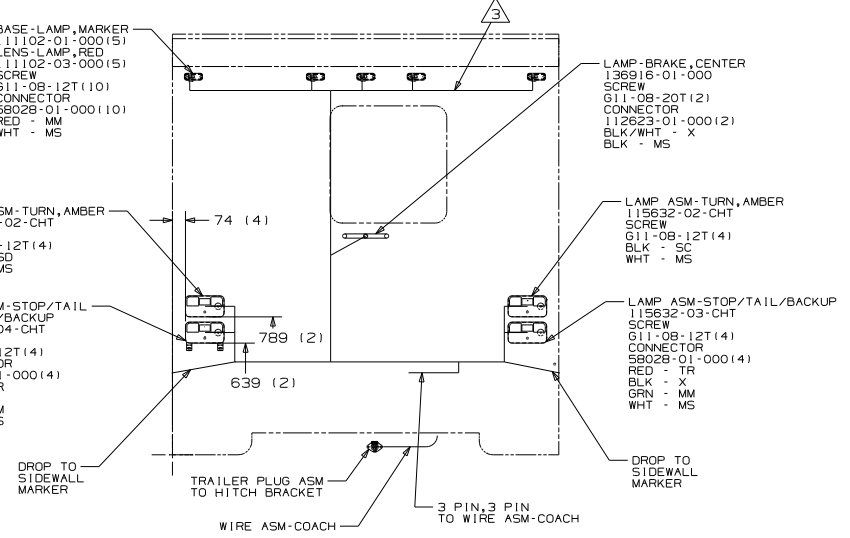
BASE-LAMP, MARKER  
 111102-01-000(5)  
 LENS-LAMP, AMBER  
 111102-02-000(5)  
 SCREW  
 G11-08-12T(10)  
 CONNECTOR  
 S8028-01-000(10)  
 RED - MM  
 WHT - MS



BASE-LAMP, MARKER  
 111102-01-000(5)  
 LENS-LAMP, RED  
 111102-03-000(5)  
 SCREW  
 G11-08-12T(10)  
 CONNECTOR  
 S8028-01-000(10)  
 RED - MM  
 WHT - MS

LAMP ASM-TURN, AMBER  
 115632-02-CHT  
 SCREW  
 G11-08-12T(4)  
 BLK - SD  
 WHT - MS

LAMP ASM-STOP/TAIL  
 LICENSE/BACKUP  
 115632-04-CHT  
 SCREW  
 G11-08-12T(4)  
 CONNECTOR  
 S8028-01-000(4)  
 RED - TR  
 BLK - X  
 GRN - MM  
 WHT - MS



LAMP-BRAKE, CENTER  
 138916-01-000  
 SCREW  
 G11-08-20T(2)  
 CONNECTOR  
 112623-01-000(2)  
 BLK/WHT - X  
 BLK - MS

LAMP ASM-TURN, AMBER  
 115632-02-CHT  
 SCREW  
 G11-08-12T(4)  
 BLK - SC  
 WHT - MS

LAMP ASM-STOP/TAIL/BACKUP  
 115632-03-CHT  
 SCREW  
 G11-08-12T(4)  
 CONNECTOR  
 S8028-01-000(4)  
 RED - TR  
 BLK - X  
 GRN - MM  
 WHT - MS

- 4 WIRE IS INTEGRAL TO ROOF ASM.
- 3 WIRE IS INTEGRAL TO BACKWALL.

- 2 SEE WIRING INSTL-BODY, 12V FOR ADDITIONAL INFORMATION.
- 1 CONNECTOR-PLUG, TRAILER 113589-01-000 TO BE SUPPLIED LOOSE IN COACH WITH TRAILER TOW PACKAGE.

265 CODES/STANDARDS CSA  
 1B1 CODES/STANDARDS USA  
 1B1 265

FOR ELECTRICAL TORQUE SPECIFICATIONS SEE DWG NO. 128783-01-000

FOR ELECTRICAL CALLOUTS SEE DWG NO. 121339-01-000

FIRST USED	02 221B
DO NOT SCALE DRAWING	
WIRING INSTL-EXTERIOR LAMPS	
SHEET 2	PART NO 139484