



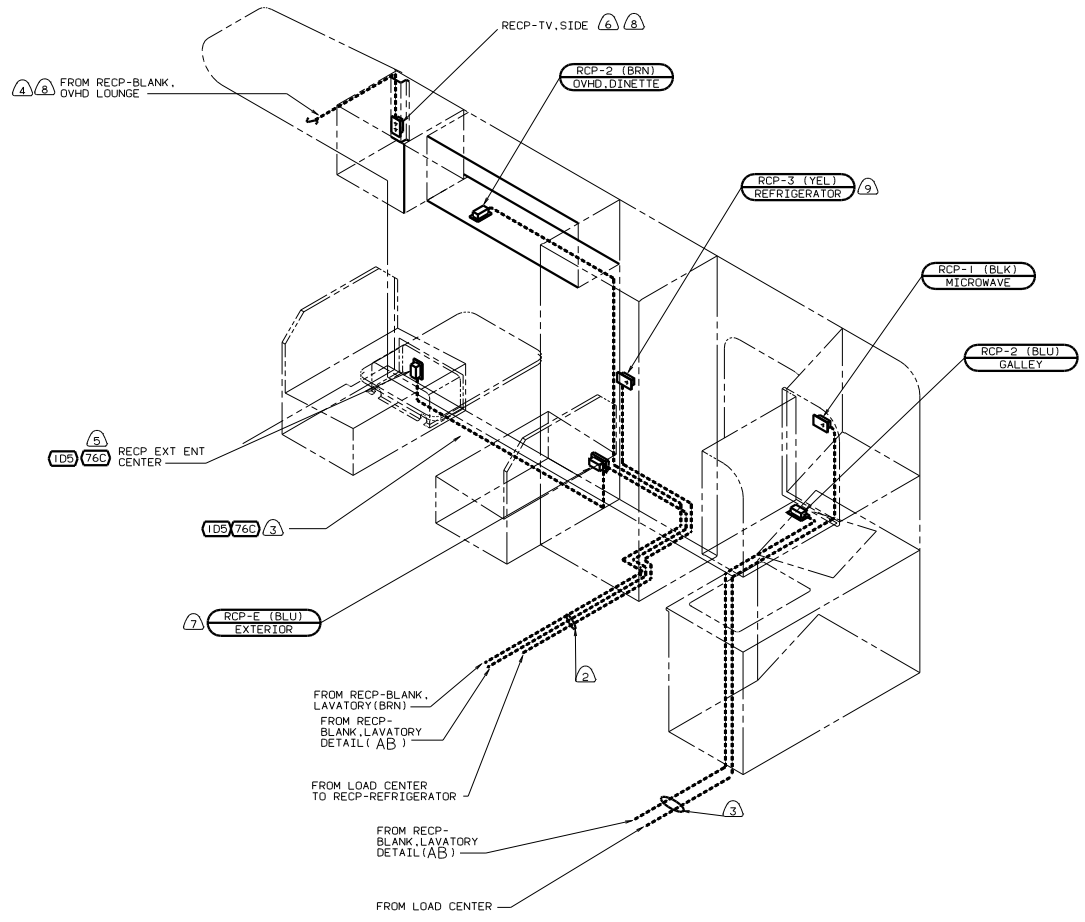
DANGER

Danger of electrical shock, burns or death. Always remove all power sources before attempting any repair, service or diagnostic work. Power can be present from shore power, generator, inverter or battery. All power sources must be disabled and secured before performing any service.



CAUTION

If you lack the skills, tools or equipment to perform diagnostic or repair work leave such work to an authorized Winnebago Industries dealer or other qualified shop.



- (9) LOCATE RECP ON REFRIGERATOR TIEDOWN BRACKET.
- (8) NOT USED WITH (78A)
- (7) NOT USED WITH (76C) OR (1D5)
- (6) SEE WIRING INSTL-TV/VCR, SIDE FOR ADDITIONAL INFORMATION.
- (5) SEE ENTERTAINMENT CENTER-COMPL FOR ADDITIONAL INFORMATION.
- (4) WIRE ROUTED IN ROOF.
- (3) ROUTE WIRE ALONG FLOOR.
- (2) ROUTE WIRE THRU FLOOR.

1. ALL CABLES TO BE SECURED WITH CLAMP 10495-01-000 OR CLIP 80734-01-000 EVERY 600MM, AND WITH IN 200MM OF A PANEL, BOX OR FITTING. USE SCREW G67-10-12B PER CLAMP UNLESS OTHERWISE SPECIFIED.

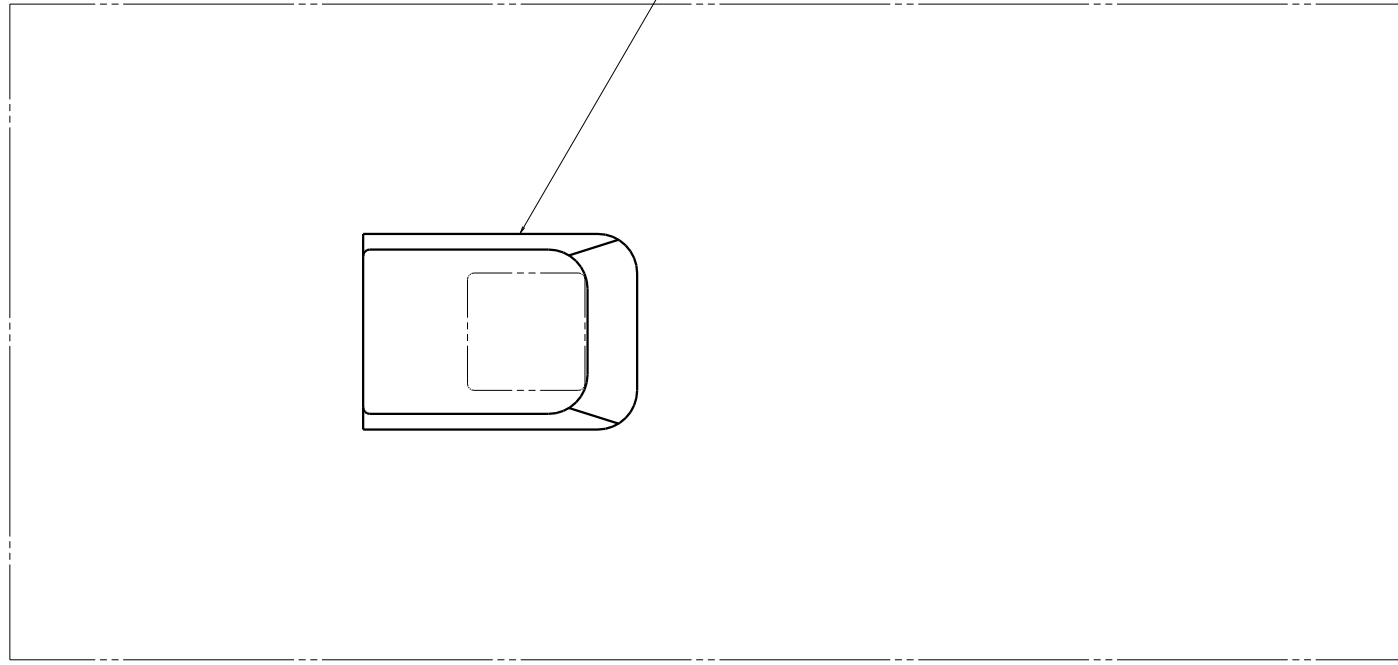
- (265) CODES/STANDARDS-CSA/CMVSS
- (1D5) ENTERTAINMENT CENTR/EXT W/CD
- (78A) TV-13" W/VCP-12V
- (76C) ENTERTAINMNT CTR/EXT CASSETTE
- (12D) ELECTRICAL SYSTEM 30 AMP
- (1B1) CODES/STANDARDS USA


FOR ELECTRICAL TORQUE SPECIFICATIONS SEE DWG NO. 128783-01-000

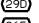
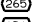
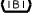
FOR ELECTRICAL CALLOUTS SEE DWG NO. 121339-01-000



01 322E (1B) (12D) (265)
 TITLE: WIRING INSTL-BODY.110 RH
 SHEET 2 OF 4
 136209


H
G
F
E
D
C
B
A



AIR CONDITIONER 
 131185-01-CHT
 CEILING ASM-A/C DUCTED
 131184-03-CHT

-  A/C ROOF-ONE 13,500 BTU
-  CODES/STANDARDS-CSA/CMVSS
-  CODES/STANDARDS USA

01 322E  

 SEE WIRING INSTL-BODY.12V. FOR ADDITIONAL INFORMATION.

NOTES:

TITLE:		136209	
WIRING INSTL-BODY.110V EXT			
DATE	SCALE	REV	FIG NO
		4	4