



DANGER

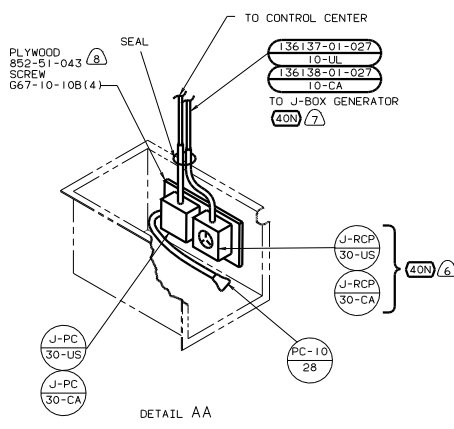
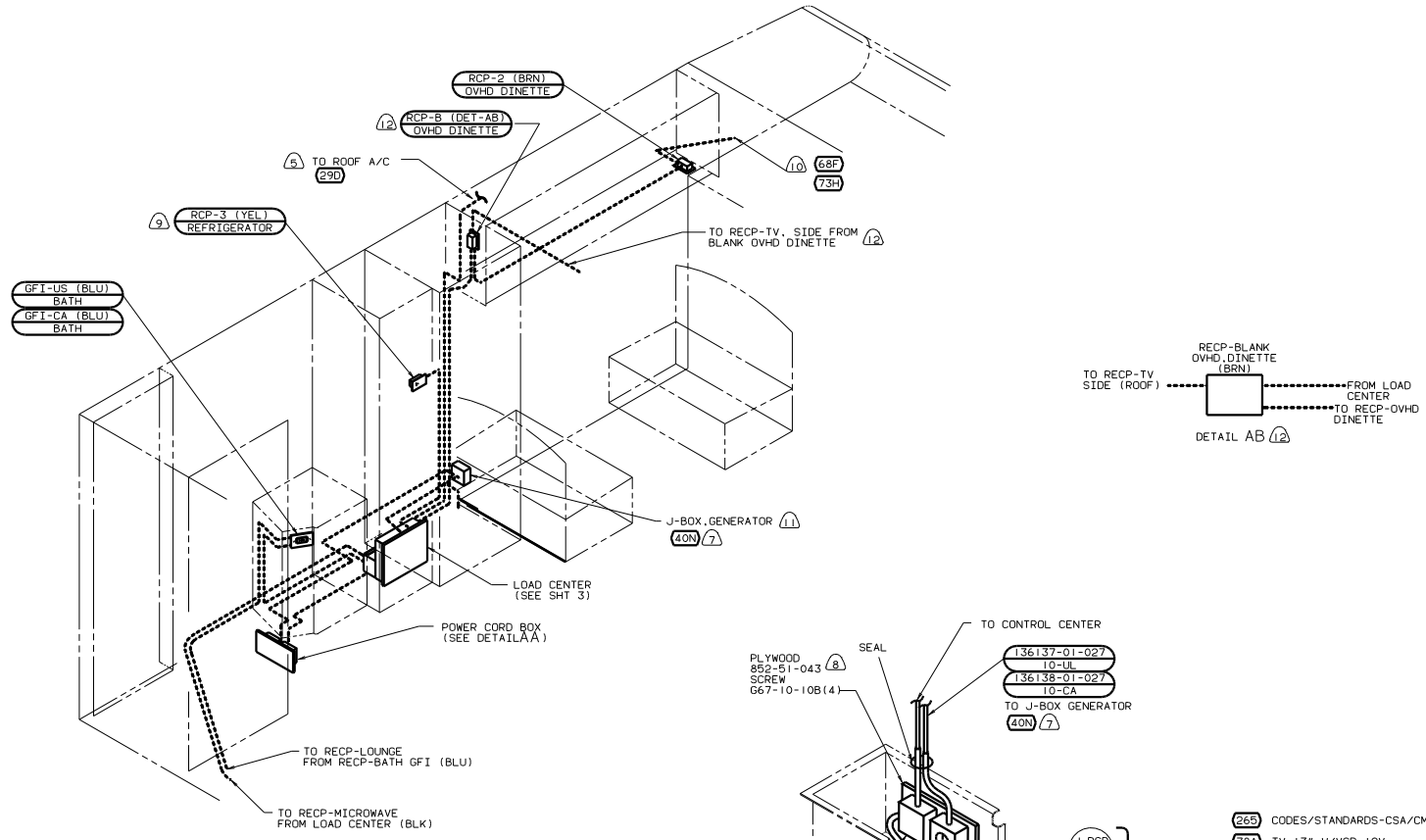
Danger of electrical shock, burns or death. Always remove all power sources before attempting any repair, service or diagnostic work. Power can be present from shore power, generator, inverter or battery. All power sources must be disabled and secured before performing any service.



CAUTION

If you lack the skills, tools or equipment to perform diagnostic or repair work leave such work to an authorized Winnebago Industries dealer or other qualified shop.

DWG NO.	FEATURE
135651-01	-----
135651-11	(1B) (12D)
135651-15	(265) (12D)



- 12 NOT USED WITH (68F) (73H) (78A)
- 1 JUNCTION BOX TO BE MOUNTED AS HIGH AS IS PRACTICALLY POSSIBLE WITHIN THE DINETTE SEAT COMPARTMENT, ON THE REFRIGERATOR WALL.
- 10 WITH FRONT ENTERTAINMENT CENTER, SEE WIRING INSTL-TV/VCR, FRONT FOR ADDITIONAL INFORMATION.
- 9 LOCATE REFRIGERATOR RECP ON TIEDOWN BRACKET.
- 8 PAINT ALL EXPOSED SURFACES BLACK WITH 106112-01-000.
- 7 SEE GENERATOR INSTALLATION FOR ADDITIONAL INFORMATION.
- 6 INSTALL RECP WITH GROUND TOWARD OUTBOARD SIDE OF VEHICLE.
- 5 ROUTE WIRE THRU ROOF.
- 4 ROUTE WIRE THRU FLOOR.

3. ALL GROUND WIRES TO BE COVERED WITH TUBING 8041-02-000.
2. ALL 110V WIRES ARE TO BE CLAMPED WITH CLAMP 10497-05-000 WITHIN 200 OF OUTLET BOXES. USE SCREW G67-10-12B.
1. ALL WIRES TO BE CLAMPED WITH CLAMP 10495-01-000 OR CLIP 80734-01-000 EVERY 1200. USE SCREW G67-10-12B UNLESS OTHERWISE SPECIFIED.

- (265) CODES/STANDARDS-CSA/CMVSS
- (78A) TV-13" W/VCP-12V
- (49X) BED-QUEEN - BACKWALL
- (40N) GEN-4, 0KW-QNAN-GAS-MICROLITE
- (29D) A/C ROOF-ONE 13,500 BTU
- (12D) ELECTRICAL SYSTEM 30 AMP
- (1B1) CODES/STANDARDS USA
- (73H) TV-19"/VCR/VIDEO SEL/SGL BNK
- (68F) TV-19"/VIDEO SELECT/SGL BUNK

(1B1) (265) (12D) (49X)

WINNEBAGO 01 324V

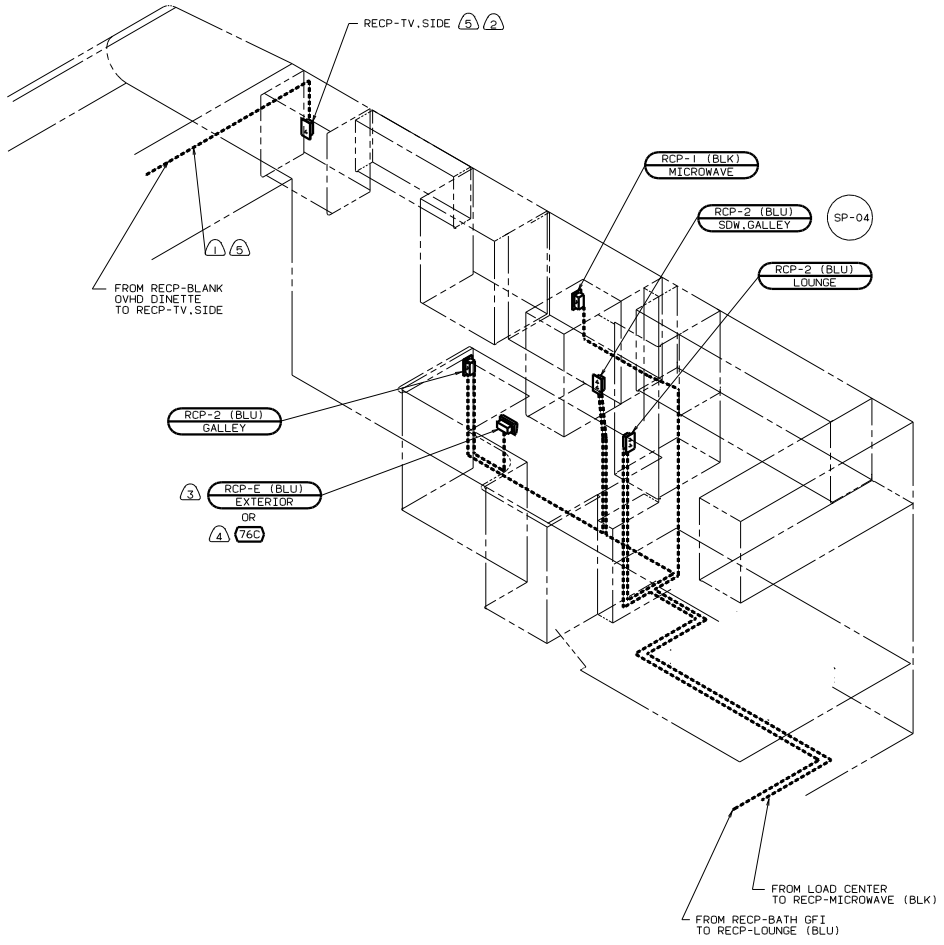
OF IN	DATE	UNSPECIFIED TOLERANCES ARE:	MATERIAL
CHP	DATE	WHOLE DIM (X)	
PL	DATE	ONE-PLACE (X.X)	
PL	DATE	TWO-PLACE (X.XX)	
PL	DATE	THREE-PLACE (X.XXX)	
CODE	DATE	INDICATE W/ANGLE	
INDICATE W/ANGLE			

REF: 132839 E I

FOR ELECTRICAL TORQUE SPECIFICATIONS SEE DWG NO. 128783-01-000

(X-X)

FOR ELECTRICAL CALLOUTS SEE DWG NO. 121339-01-000



- 5 NOT USED WITH 68F 73+ 78A
- 4 SEE ENTERTAINMENT CENTER COMPL FOR ADDITIONAL INFORMATION.
- 3 NOT USED WITH 76C
- 2 SEE WIRING INSTL-SIDE TV FOR ADDITIONAL INFORMATION.
- 1 WIRE ROUTED IN ROOF.

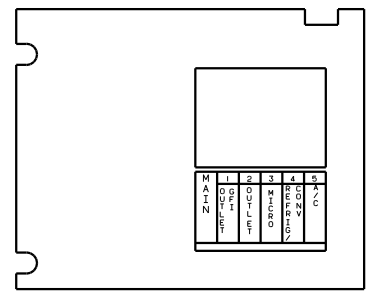
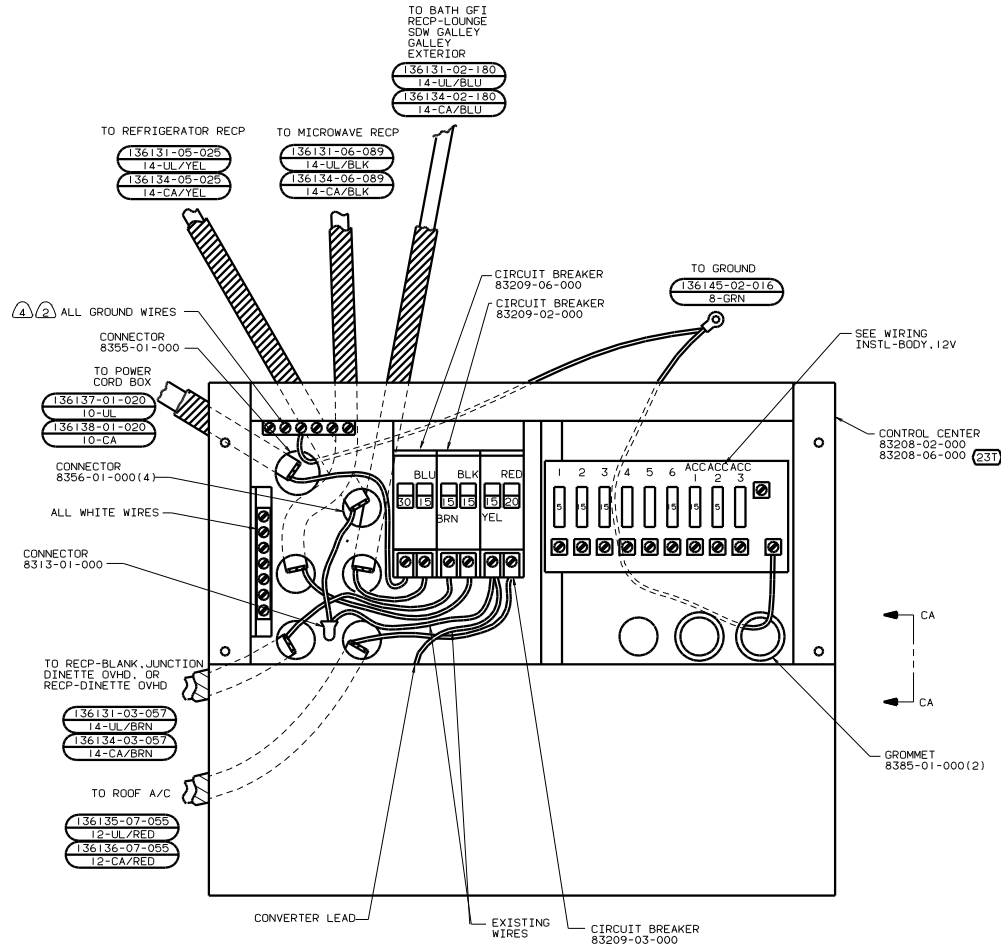
- 265 CODES/STANDARDS-CSA/CMVSS
- 78A TV-13" W/VCP-12V
- 76C ENTERTAINMT CTR/EXT CASSETTE
- 49X BED-QUEEN - BACKWALL
- 12D ELECTRICAL SYSTEM 30 AMP
- 1B1 CODES/STANDARDS USA
- 73+ TV-19"/VCR/VIDEO SEL/SGL BNK
- 68F TV-19"/VIDEO SELECT/SGL BUNK

FOR ELECTRICAL TORQUE SPECIFICATIONS SEE DWG NO. 128783-01-000

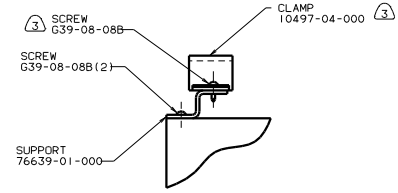
FOR ELECTRICAL CALLOUTS SEE DWG NO. 121339-01-000

1B1 265 12D 49X 01 324V RIGHT SIDE

WIRING INSTL-BODY 110V (RH)
 SHEET 2 OF 4



PANEL-COVER



VIEW CA

- (4) WIRES W/O TERMINALS TO BE STRIPPED 10 AND SOLDER DIPPED.
 - (3) FASTEN ALL WIRES TO SUPPORT, USE ONE SCREW PER CLAMP.
 - (2) ALL GROUND WIRES TO BE COVERED WITH TUBING 8041-02-000.
 - 1. ALL CABLES SHALL BE COVERED WITH CONDUIT-CONVOLUTE, SLIT 41953-01-000, UNLESS OTHERWISE SPECIFIED, 600 LESS THAN CABLE LENGTH
- NOTES:

- (265) CODES/STANDARDS-CSA/CMVSS
- (231) HEATED HOLDING TANKS-PACKAGE
- (290) A/C ROOF-ONE 13,500 BTU
- (120) ELECTRICAL SYSTEM 30 AMP
- (1B1) CODES/STANDARDS USA

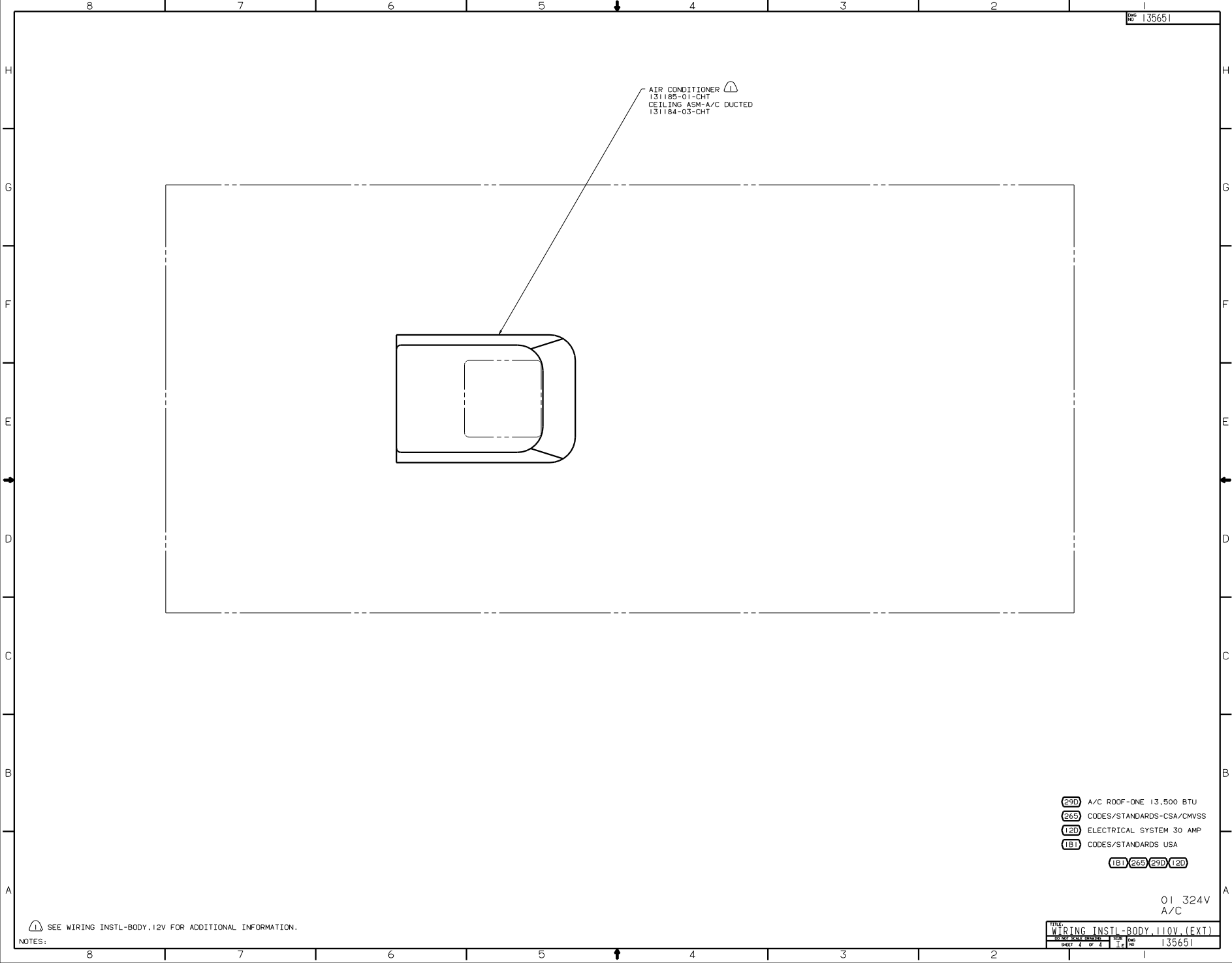
FOR ELECTRICAL TORQUE SPECIFICATIONS SEE DWG NO. 128783-01-000




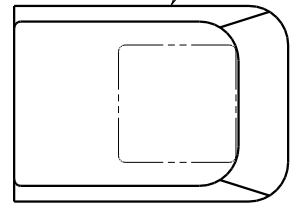
FOR ELECTRICAL CALLOUTS SEE DWG NO. 121339-01-000

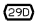

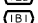

(1B1) 265 01 324V LOAD CENTER





FILE	WIRING INSTL-BODY, 110V (LC)
NO. OF SHEETS	3 OF 4
SHEET NO.	3
REV. NO.	1
DATE	135651




AIR CONDITIONER 
 131185-01-CHT
 CEILING ASM-A/C DUCTED
 131184-03-CHT



-  A/C ROOF-ONE 13,500 BTU
-  CODES/STANDARDS-CSA/CMVSS
-  ELECTRICAL SYSTEM 30 AMP
-  CODES/STANDARDS USA

01 324V
 A/C

 SEE WIRING INSTL-BODY.12V FOR ADDITIONAL INFORMATION.

NOTES: