

- 10. TRIM P-TRAP EXTENSION TO FIT.
- 9. SECURE VENT TUBES TO FLOOR WITH BRACKET.
- 8. VENT PIPE MUST PROJECT 51 MM MIN AND 64 MM MAX ABOVE ROOF FOR PROPER FIT AND FUNCTION.
- 7. SEE DWG 61607-01-000 FOR INSTL OF GROMMETS.
- 6. SEAL ALL AROUND SHOWER WITH SILICONE.
- 5. EXPOSED PIPE ABOVE ROOF TO BE PAINTED WITH 37163-01-000.
- 4. ALL EXTERIOR OPENINGS AROUND PIPE TO BE SEALED WITH 11074-01-000.
- 3. ALL PIPE AND FITTINGS TO BE ASSEMBLED WITH SOLVENT 4020-01-000.
- 2. SLOPE OF TRAP ARM MUST BE 6 PER 305.
- 1. SLOPE OF HORIZONTAL PIPING TO BE 6 PER 305 MIN.

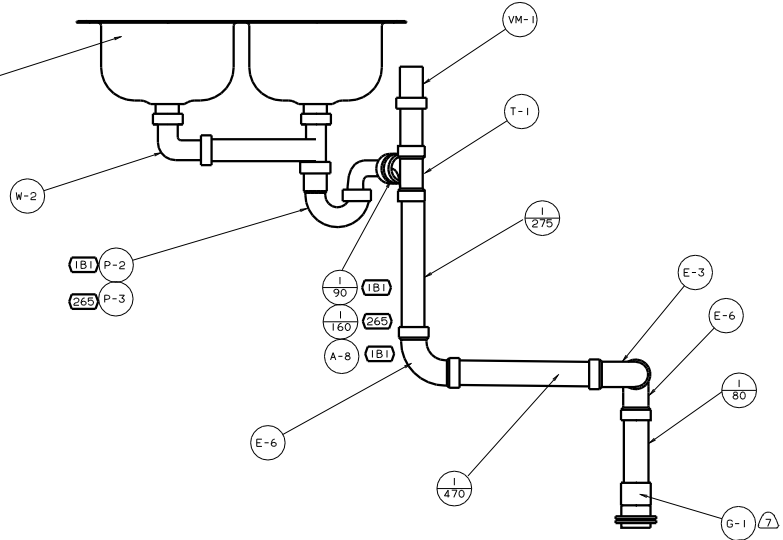
NOTES:

265 CODES/STANDARDS-CSA/CMVSS
 TBT CODES/STANDARDS USA

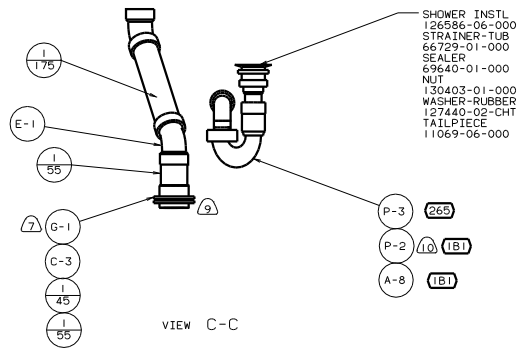
X-X FOR DRAINAGE CALLOUTS SEE DWG NO. 116229-01-000

| | | | | |
|-----------------------------------|-------|----------------------------|-----------------------|---------|
| DATE | | UNDESIGNED TOLERANCES ARE: | WINNEBAGO | 01 F32T |
| OF IN | DATE | WHOLE OR 1/2 | | |
| CHOP | DATE | ONE-PLACE (X.X) | | |
| PIE | DATE | TWO-PLACE (X.XX) | | |
| P/E | DATE | THREE-PLACE (X.XXX) | | |
| CODE | DATE | INDIC. WHOLE PRODUCTION | | |
| LAYOUT | 6376 | TITLE | DRAINAGE SYSTEM INSTL | |
| REV # | SCALE | NOTE | DO NOT SCALE DRAWING | FIG NO |
| ALL DIMENSIONS ARE IN MILLIMETERS | SHEET | 1 | OF 3 | 136375 |

SINK-SST,DOUBLE
 104113-01-000 (US/CAN)
 STRAINER
 95303-01-000 (2)
 SEAL
 9125-02-000
 RETAINER
 105497-01-000 (4)
 SCREW
 G67-06-10U (22)

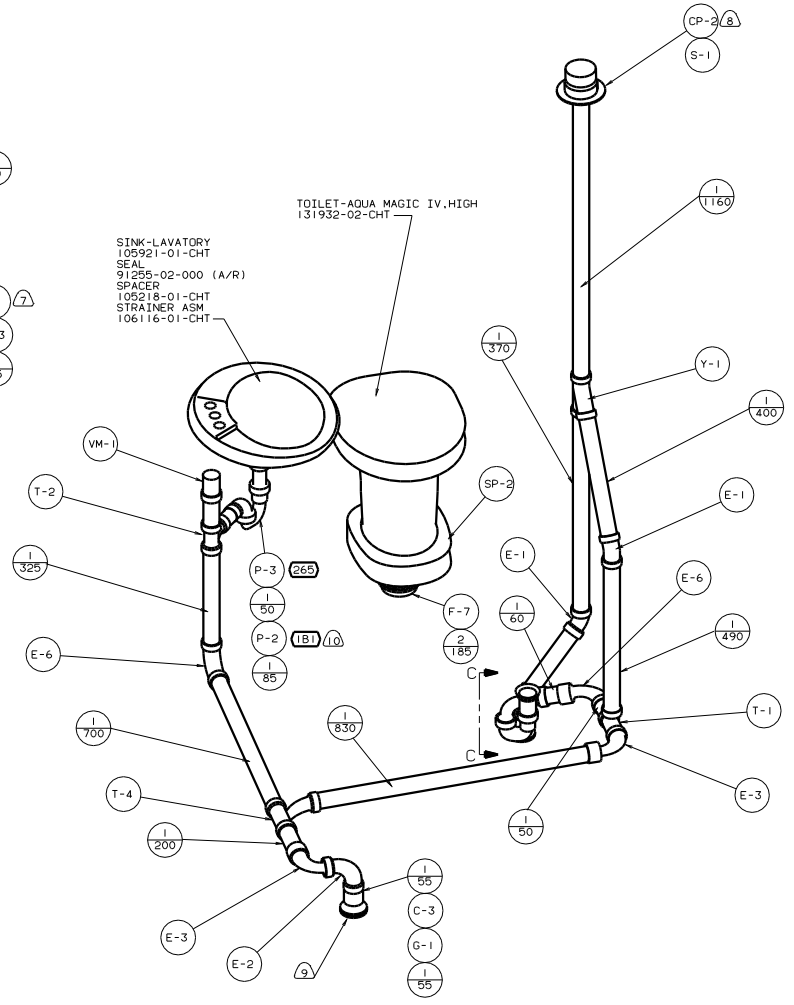


DETAIL A



VIEW C-C

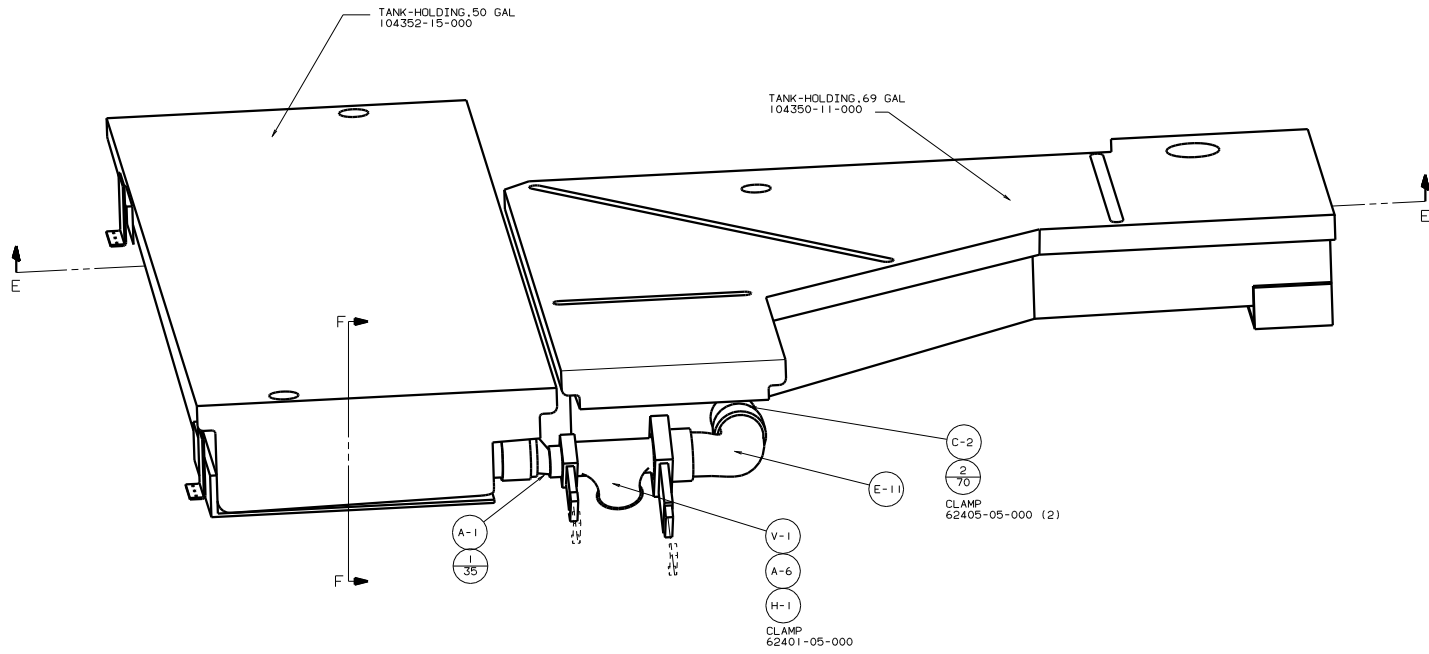
SINK-LAVATORY
 105921-01-CHT
 SEAL
 91255-02-000 (A/R)
 SPACER
 105218-01-CHT
 STRAINER ASM
 106116-01-CHT



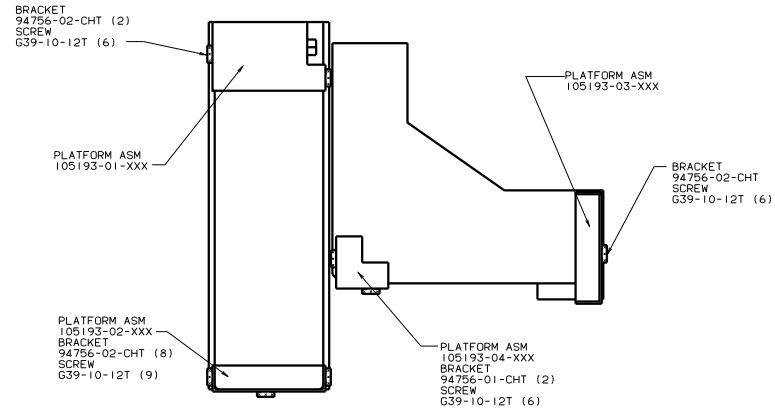
DETAIL B

01 F32T

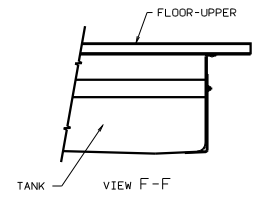
| | | | |
|--------------|------|-----------------------|----|
| TITLE | | DRAINAGE SYSTEM INSTL | |
| NO | DATE | REV | BY |
| 1 | | 1 | |
| SHEET 2 OF 3 | | 136375 | |



DETAIL D

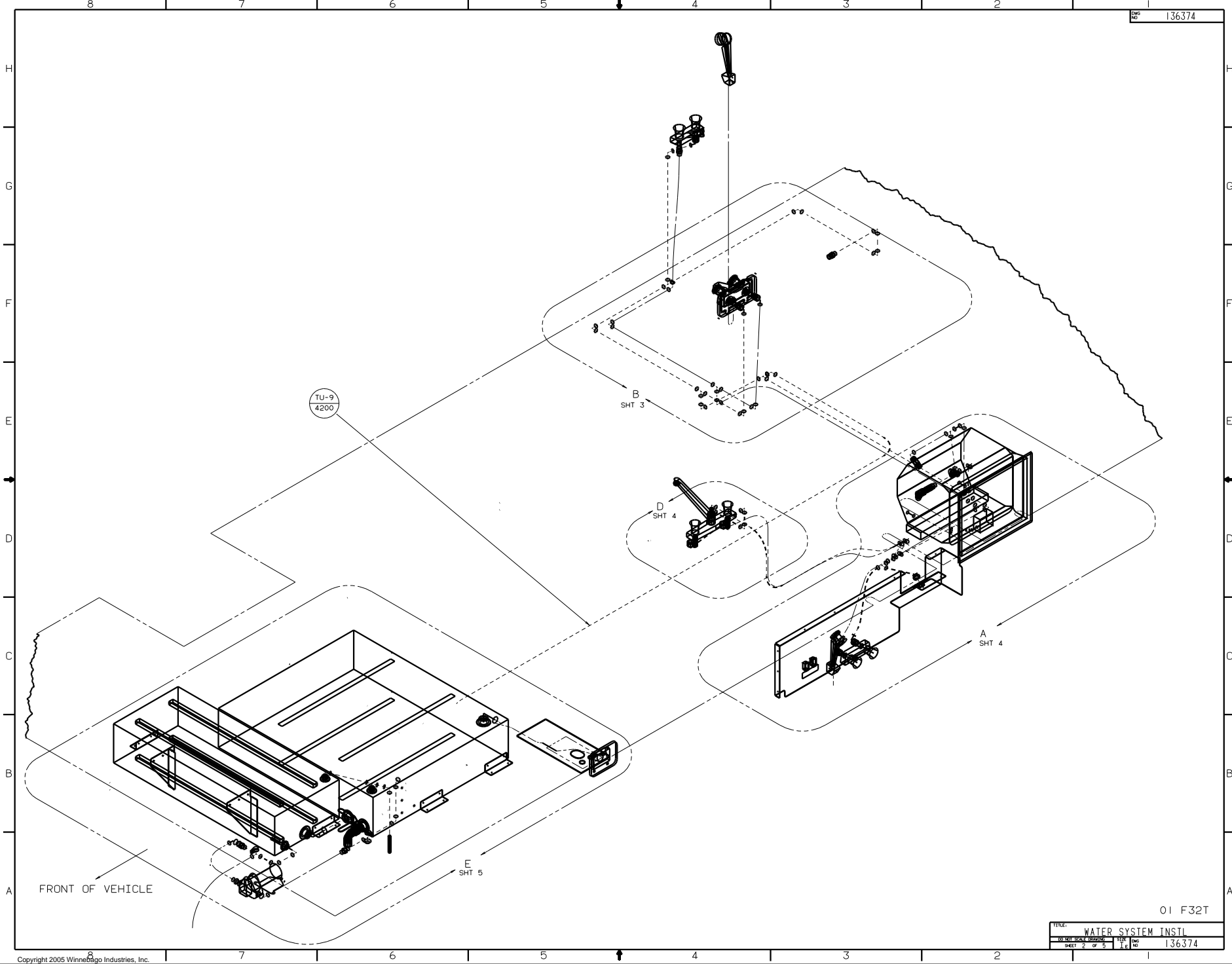


VIEW E-E



01 F32T

| | | | |
|------------------------------|------|----------------|-----|
| TITLE: DRAINAGE SYSTEM INSTL | | DWG NO: 136375 | |
| 30 DAY SCALE DRAWING | DATE | 1.0 | 1.0 |
| SHEET 3 OF 3 | REV | | |



FRONT OF VEHICLE

TU-9
4200

B
SHT 3

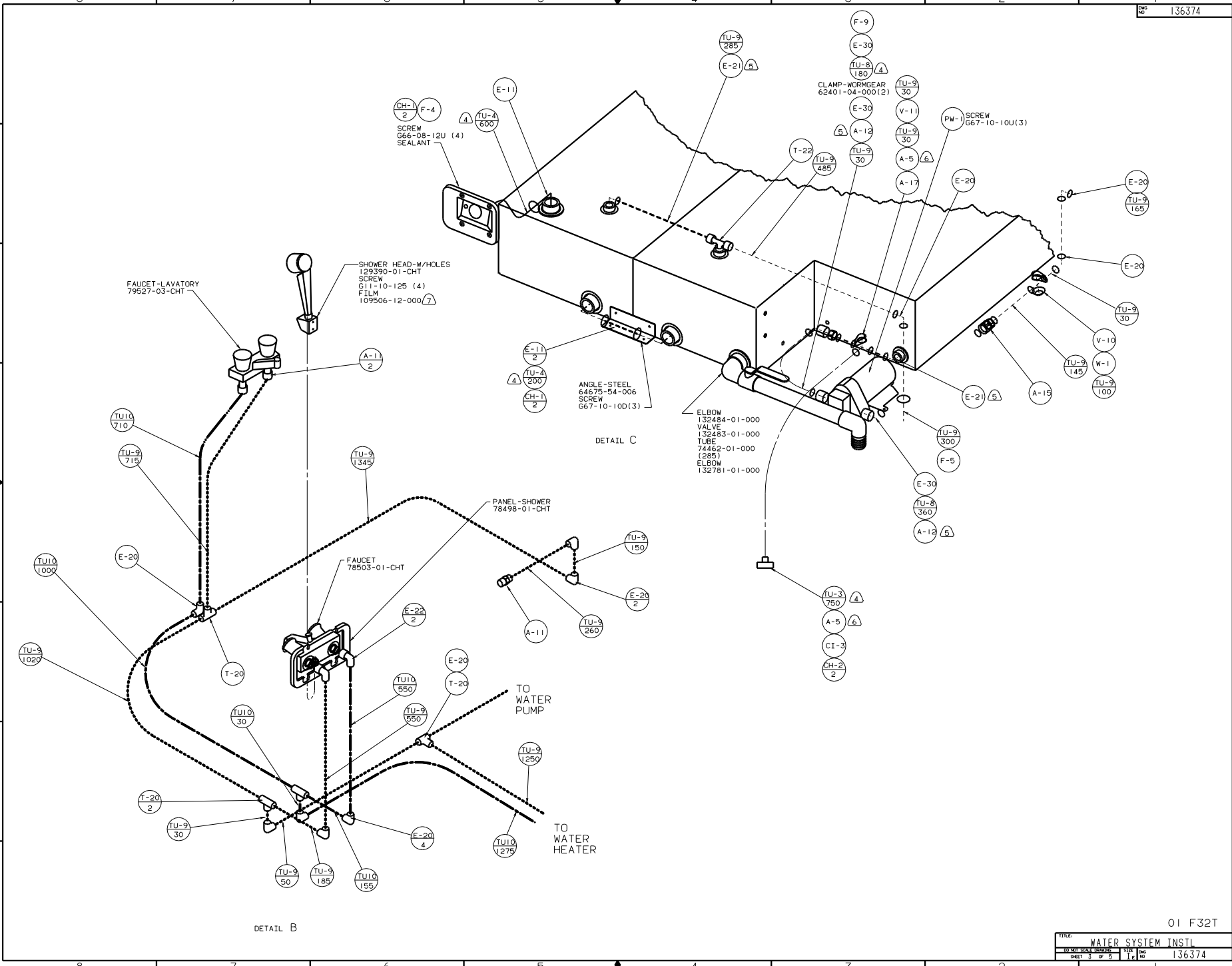
D
SHT 4

A
SHT 4

E
SHT 5

01 F32T

| | |
|---------------------------|------------|
| TITLE: WATER SYSTEM INSTL | |
| TO SHEET NO. 2 OF 5 | REV. NO. 1 |
| 136374 | |



FAUCET-LAVATORY
79527-03-CHT

SHOWER HEAD-W/HOLES
129390-01-CHT
SCREW
G11-10-125 (4)
FILM
109506-12-000 (7)

CH-1
2
F-4
TU-4
600
SEALANT
SCREW
G66-08-12U (4)

ANGLE-STEEL
64675-54-006
SCREW
G67-10-100(3)

DETAIL C

ELBOW
132484-01-000
VALVE
132483-01-000
TUBE
74462-01-000
(285)
ELBOW
132781-01-000

CLAMP-WORMGEAR
62401-04-000(2)

SCREW
G67-10-10U(3)

PANEL-SHOWER
78498-01-CHT

FAUCET
78503-01-CHT

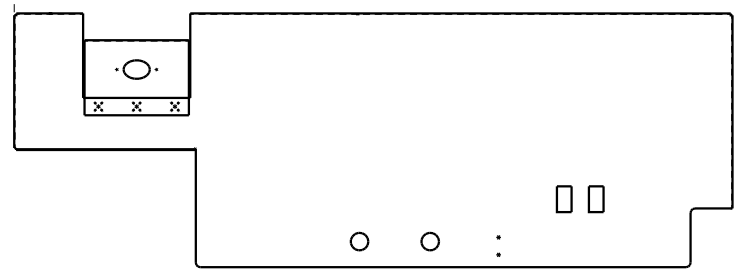
TO WATER
PUMP

TO WATER
HEATER

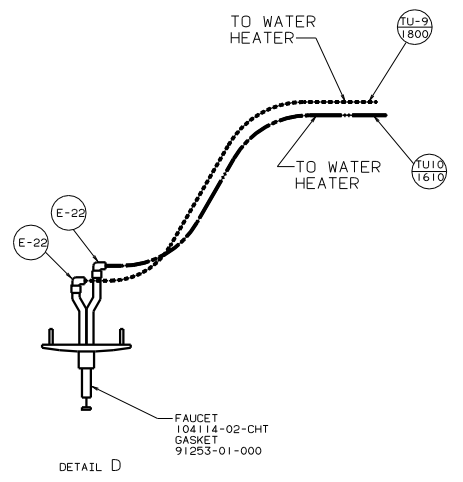
DETAIL B

01 F32T

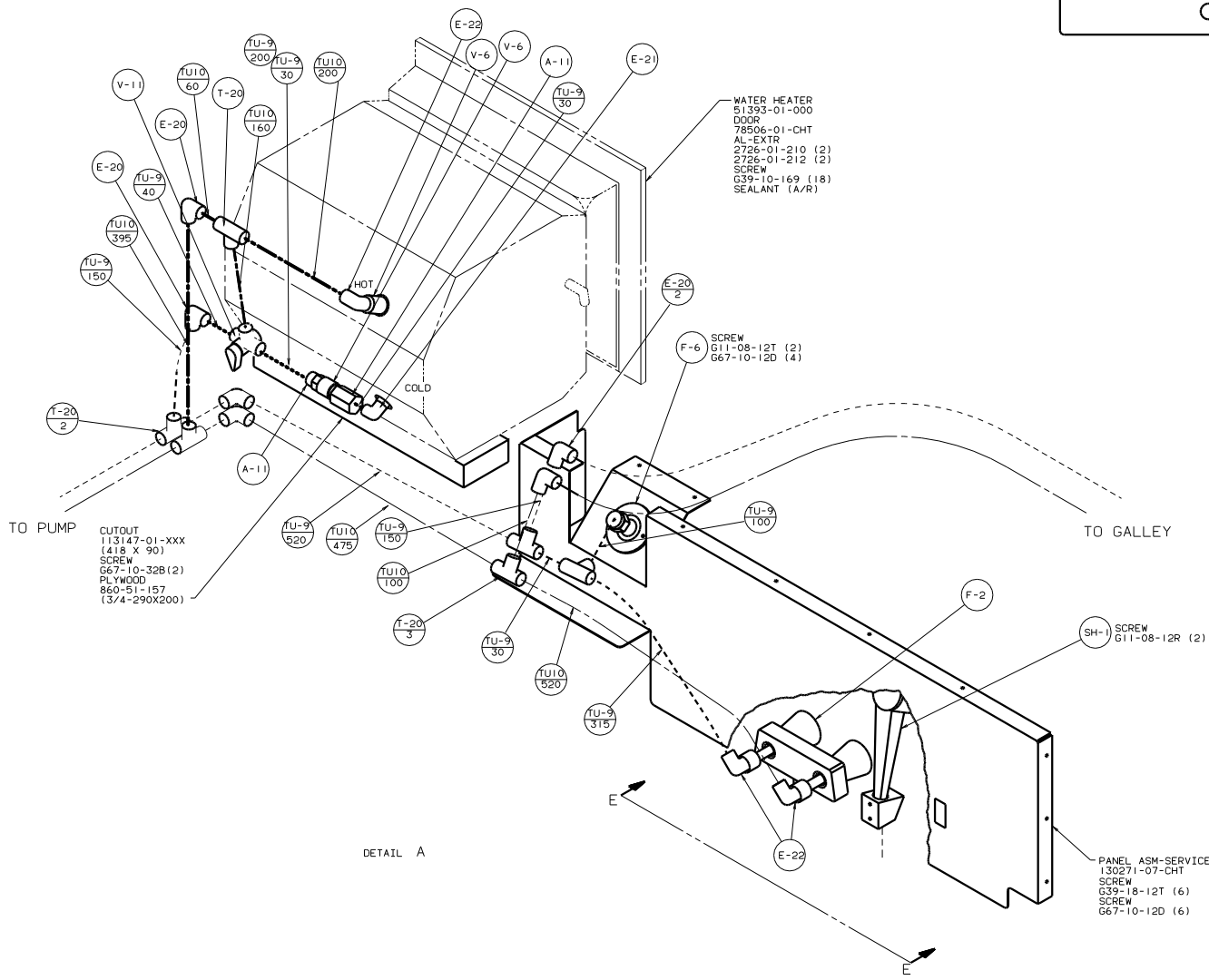
| | | | |
|-------|------------------|--------------------|-----|
| TITLE | | WATER SYSTEM INSTL | |
| 30 | NO SCALE DRAWING | 1 | REV |
| SHEET | 3 OF 5 | 1 | REV |
| | | 136374 | |



VIEW E-E



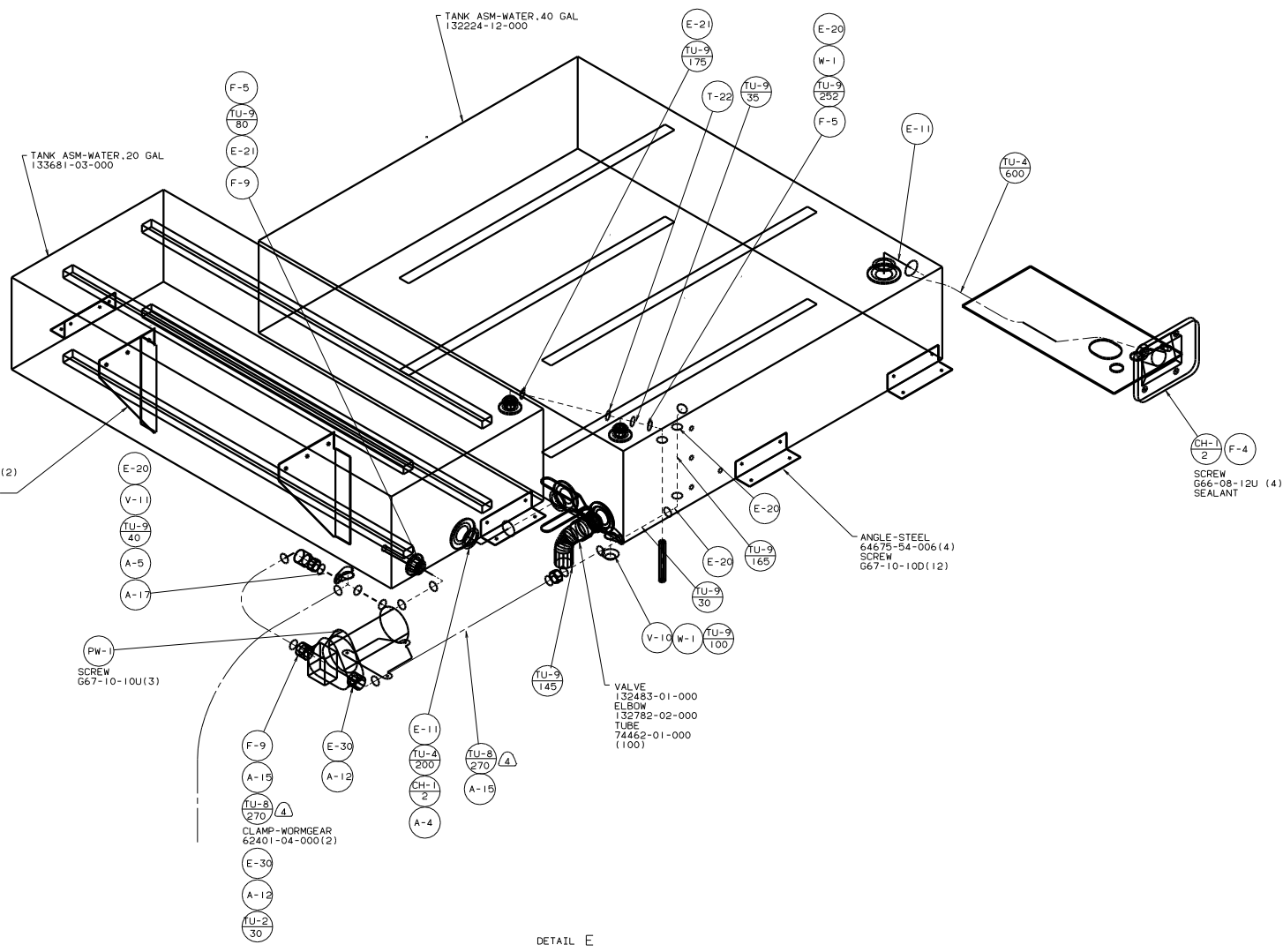
DETAIL D



DETAIL A

PANEL ASM-SERVICE CENTER
 130271-07-CHT
 SCREW
 G39-18-12T (6)
 SCREW
 G67-10-12D (6)

| | |
|---------------------------|--------------|
| TITLE: WATER SYSTEM INSTL | |
| NO. OF SHEETS | TOTAL SHEETS |
| 4 OF 5 | 5 |
| 136374 | |



DETAIL E