

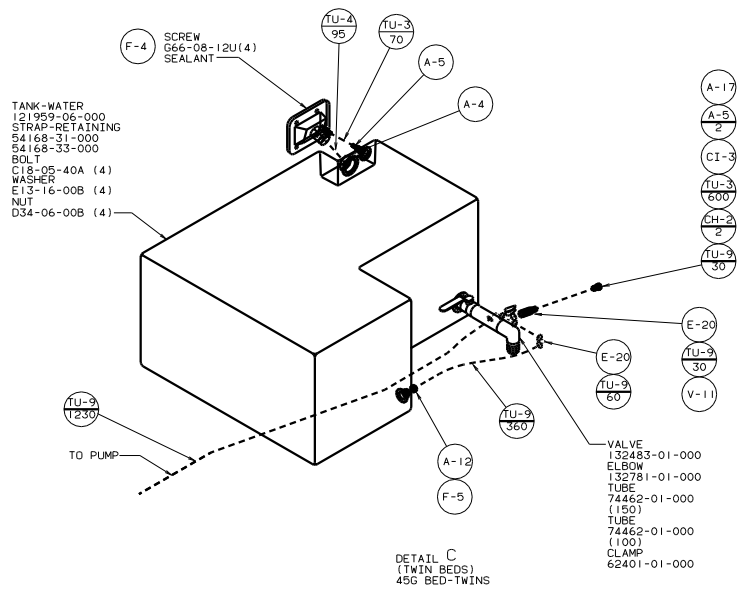
- 1. SLOPE OF HORIZONTAL PIPING TO BE 6 PER 305 MIN.
- 2. SLOPE OF TRAP ARM MUST BE 6 PER 305.
- 3. ALL PIPE AND FITTINGS TO BE ASSEMBLED WITH SOLVENT 4020-01-000.
- 4. ALL EXTERIOR OPENINGS AROUND PIPE TO BE SEALED WITH 69637-01-000.
- 5. EXPOSED PIPE ABOVE ROOF TO BE PAINTED 37163-01-000.
- 6. FOR CAN UNITS EACH HOLDING TANK SHALL HAVE A CSA APPROVAL STAMPED NEAR THE IAMPO APPROVAL.
- 7. SEAL ALL AROUND SHOWER WITH SILICONE 78474-01-CHT.
- 8. SEE DWG 61607-01-000 FOR INSTL OF GROMMET.
- 9. VENT PIPE MUST PROJECT 51 MM MIN AND 63.5 MM MAX ABOVE ROOF FOR PROPER FIT AND FUNCTION.
- 10. SECURE VENT TUBES TO FLOOR.
- 11. TRIM P-TRAP EXTENSION TO FIT.
- 12. SECURE PIPES TO CABINET USING WIRE TIE 108046-02-000 AND SCREW G67-10-12U(8).

(X-X) FOR DRAINAGE CALLOUTS SEE DWG NO. 116229-01-000

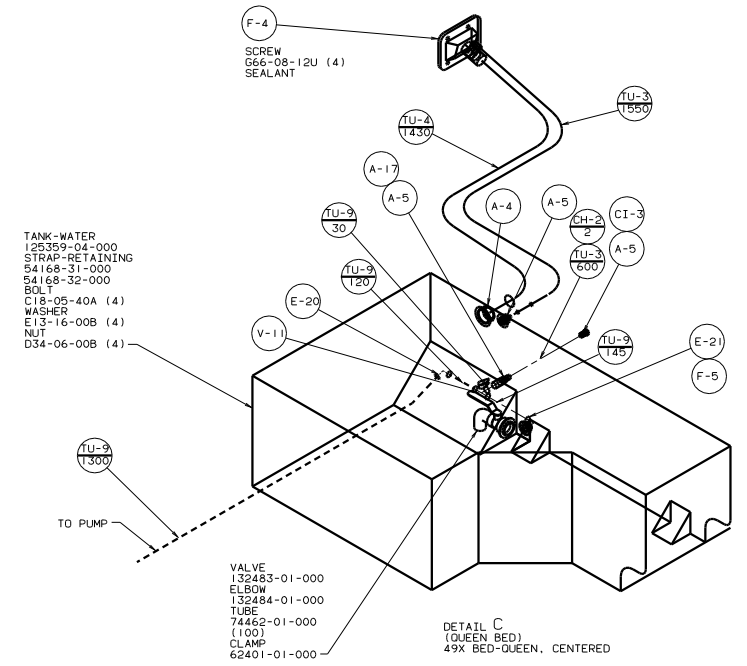
WINNEAGO		98 F29W0
DATE	UNDESIGNED TOLERANCES ARE:	MATERIAL
DATE	FRAMES (FR. 21)	
DATE	FRAMES (FR. 22)	
DATE	FRAMES (FR. 23)	
DATE	FRAMES (FR. 24)	
DATE	FRAMES (FR. 25)	
DATE	FRAMES (FR. 26)	
DATE	FRAMES (FR. 27)	
DATE	FRAMES (FR. 28)	
DATE	FRAMES (FR. 29)	
DATE	FRAMES (FR. 30)	
DATE	FRAMES (FR. 31)	
DATE	FRAMES (FR. 32)	
DATE	FRAMES (FR. 33)	
DATE	FRAMES (FR. 34)	
DATE	FRAMES (FR. 35)	
DATE	FRAMES (FR. 36)	
DATE	FRAMES (FR. 37)	
DATE	FRAMES (FR. 38)	
DATE	FRAMES (FR. 39)	
DATE	FRAMES (FR. 40)	
DATE	FRAMES (FR. 41)	
DATE	FRAMES (FR. 42)	
DATE	FRAMES (FR. 43)	
DATE	FRAMES (FR. 44)	
DATE	FRAMES (FR. 45)	
DATE	FRAMES (FR. 46)	
DATE	FRAMES (FR. 47)	
DATE	FRAMES (FR. 48)	
DATE	FRAMES (FR. 49)	
DATE	FRAMES (FR. 50)	
DATE	FRAMES (FR. 51)	
DATE	FRAMES (FR. 52)	
DATE	FRAMES (FR. 53)	
DATE	FRAMES (FR. 54)	
DATE	FRAMES (FR. 55)	
DATE	FRAMES (FR. 56)	
DATE	FRAMES (FR. 57)	
DATE	FRAMES (FR. 58)	
DATE	FRAMES (FR. 59)	
DATE	FRAMES (FR. 60)	
DATE	FRAMES (FR. 61)	
DATE	FRAMES (FR. 62)	
DATE	FRAMES (FR. 63)	
DATE	FRAMES (FR. 64)	
DATE	FRAMES (FR. 65)	
DATE	FRAMES (FR. 66)	
DATE	FRAMES (FR. 67)	
DATE	FRAMES (FR. 68)	
DATE	FRAMES (FR. 69)	
DATE	FRAMES (FR. 70)	
DATE	FRAMES (FR. 71)	
DATE	FRAMES (FR. 72)	
DATE	FRAMES (FR. 73)	
DATE	FRAMES (FR. 74)	
DATE	FRAMES (FR. 75)	
DATE	FRAMES (FR. 76)	
DATE	FRAMES (FR. 77)	
DATE	FRAMES (FR. 78)	
DATE	FRAMES (FR. 79)	
DATE	FRAMES (FR. 80)	
DATE	FRAMES (FR. 81)	
DATE	FRAMES (FR. 82)	
DATE	FRAMES (FR. 83)	
DATE	FRAMES (FR. 84)	
DATE	FRAMES (FR. 85)	
DATE	FRAMES (FR. 86)	
DATE	FRAMES (FR. 87)	
DATE	FRAMES (FR. 88)	
DATE	FRAMES (FR. 89)	
DATE	FRAMES (FR. 90)	
DATE	FRAMES (FR. 91)	
DATE	FRAMES (FR. 92)	
DATE	FRAMES (FR. 93)	
DATE	FRAMES (FR. 94)	
DATE	FRAMES (FR. 95)	
DATE	FRAMES (FR. 96)	
DATE	FRAMES (FR. 97)	
DATE	FRAMES (FR. 98)	
DATE	FRAMES (FR. 99)	
DATE	FRAMES (FR. 100)	



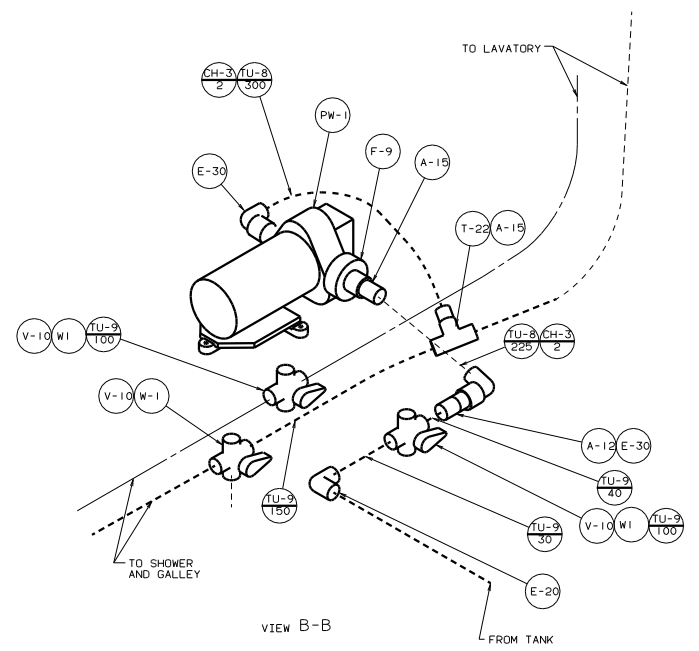




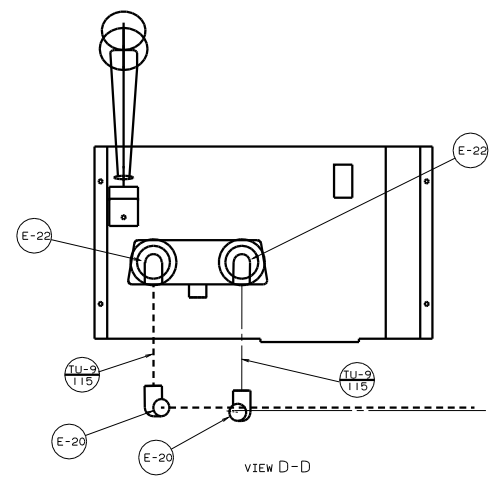
DETAIL C  
(TWIN BEDS)  
45G BED-TWINS



DETAIL C  
(QUEEN BED)  
49X BED-QUEEN, CENTERED



VIEW B-B



VIEW D-D