

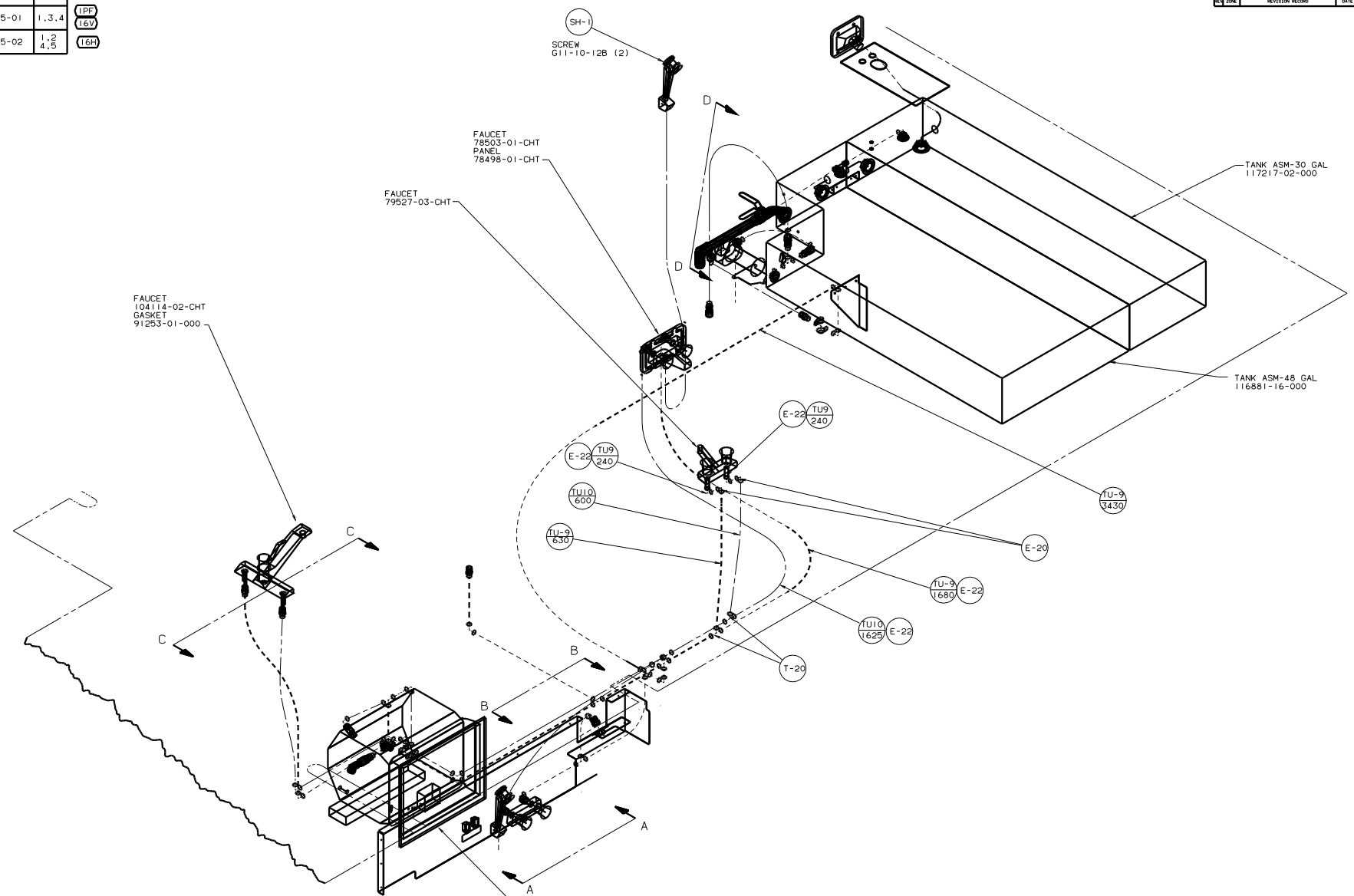
VIEW A-A

00 F30A

TITLE: DRAINAGE SYSTEM INSTL		REV: 1	
DATE: 2	BY: 2	DATE: 1	BY: 1
SHEET 2 of 2		133944	

DWG NO	SHEET
133945-01	1,3,4
133945-02	1,2 4,5

IPF
16V
16H



SCREW
G11-10-12B (2)

FAUCET
78503-01-CHT
PANEL
78498-01-CHT

FAUCET
79527-03-CHT

FAUCET
104114-02-CHT
GASKET
91293-01-000

TANK ASM-30 GAL
117217-02-000

TANK ASM-48 GAL
116881-16-000

A
WATER HEATER
51393-01-000
DOOR
78506-01-CHT
GARNISH
2726-01-210 (2)
2726-01-212 (2)
SCREW
G39-10-209 (18)
SEALANT
CUTOUT
113147-01-XXX
(418 X 90)
SCREW
G67-10-32B (2)

- NOTES:
1. PLASTIC FITTINGS TO BE SEALED WITH SEALANT 84456-01-000.
 2. TUBING TO BE INSTALLED WITH SUFFICIENT SLOPE TO PROVIDE DRAINAGE TO THE NEAREST VALVE.
 3. ALL TUBING TO BE SECURED AT 1200 INTERVALS MAX WITH CLAMP 10495-01-000 OR CLIP 91951-01-000 AND SCREW G67-10-12B.
 4. CLAMP MUST BE ON BARBS.

LEGEND

HOT [Symbol]

COLD [Symbol]

X-X FOR WATER CALLOUTS SEE DWG NO. 116230-01-000

- 16V FORD CHASSIS-15,700 LB.GWVR
- 16H FORD CHASSIS 18,000#/V10 ENG
- IPF WORKHORSE CH. 14,800LB. GWVR

WINNEBAGO OO F30A

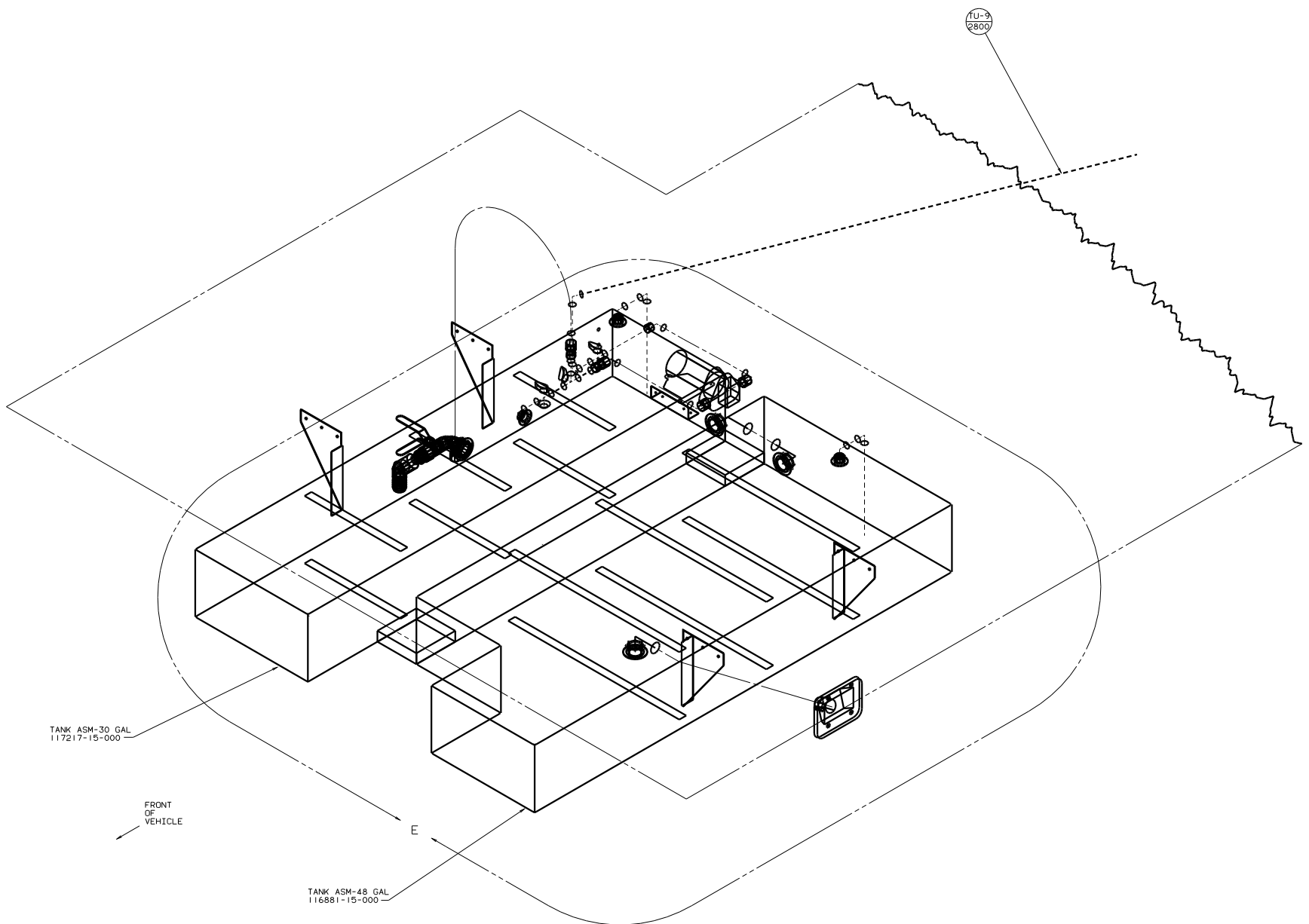
DATE	UNDESIGNED PROLOGUES INC.	MATERIAL
DATE	WHOLE ORB 101	
DATE	ONE-PLACE (K.A.)	
DATE	TWO-PLACE (K.A.)	
DATE	SCALE	
DATE	INDUS. WAGLE PRODUCTION	

LANE# F30A TITLE: WATER SYSTEM INSTL

REV # SCALE: NONE 20-100 SCALE: 2:1

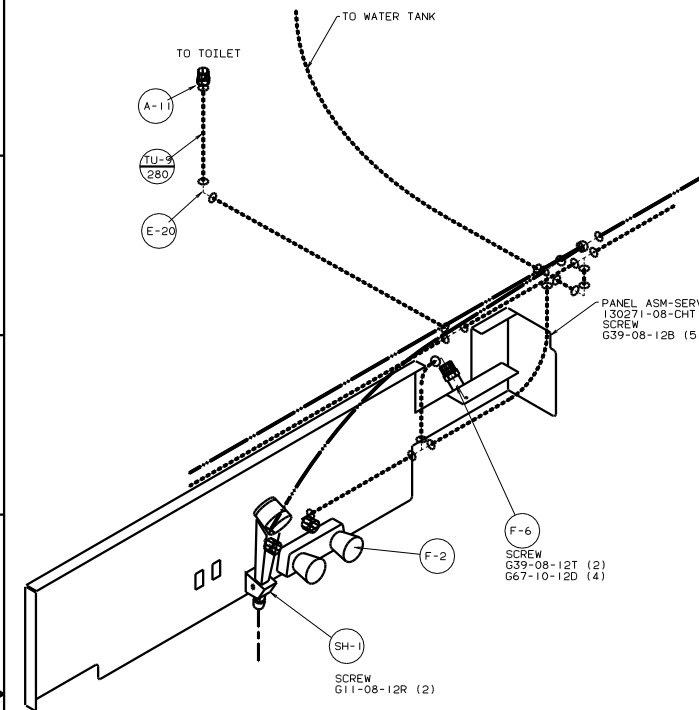
ALL DIMENSIONS ARE IN MILLIMETERS SHEET 1 OF 5

REF: 129665 P 133945

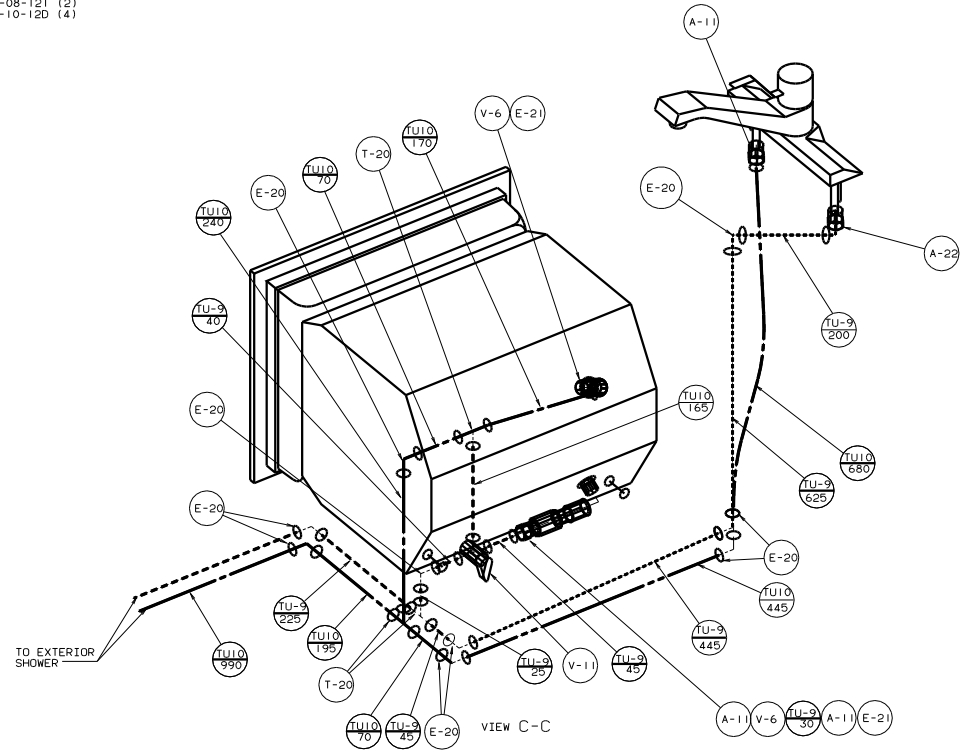


00 F30A

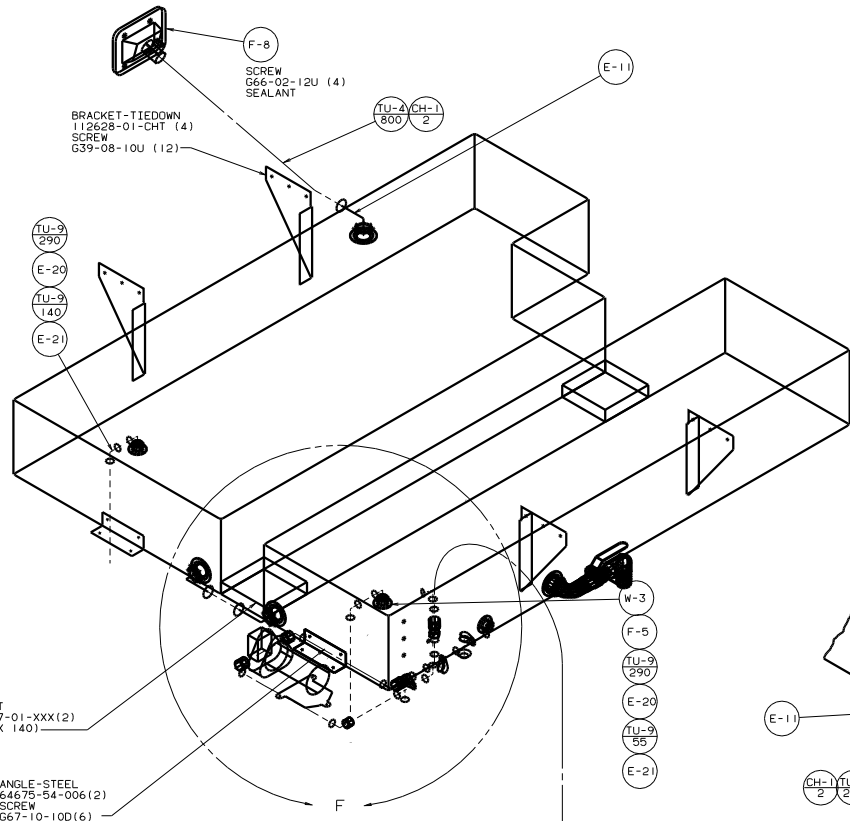
TITLE: WATER SYSTEM INSTL		Doc No	133945
30 DAY SCALE DRAWING	2 of 5	1.6	



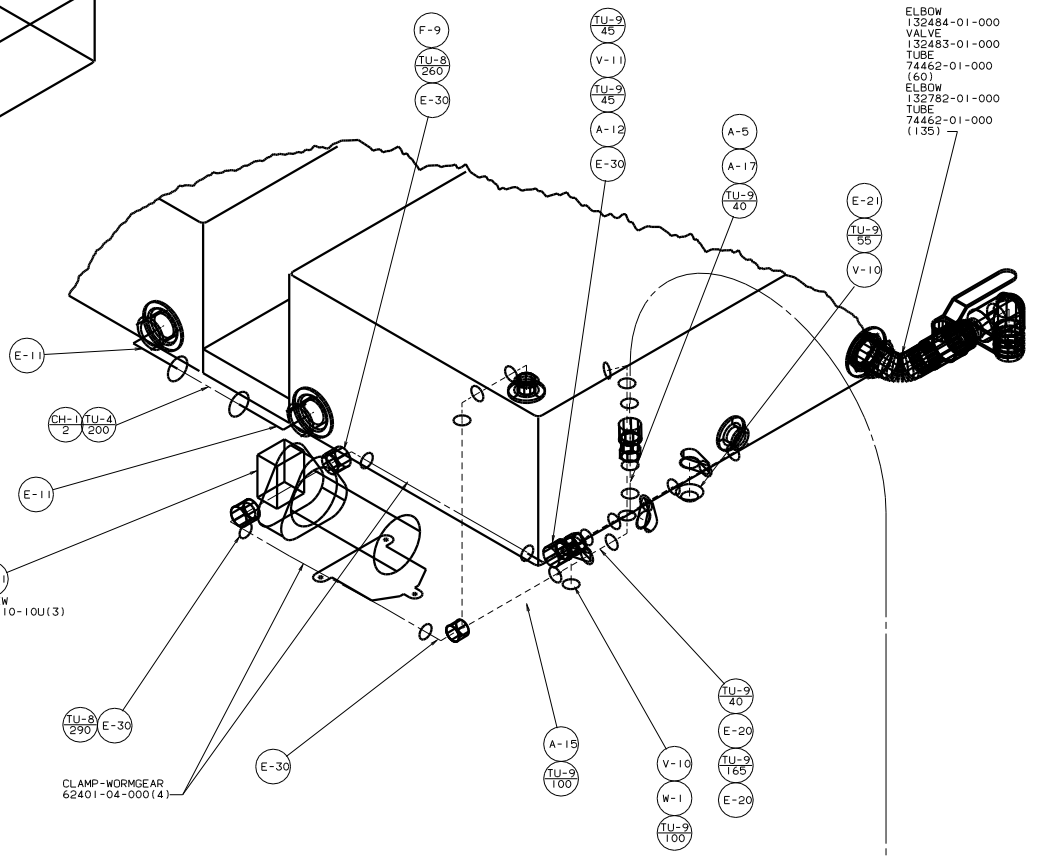
VIEW A-A



VIEW C-C



DETAIL E



DETAIL F

TITLE		WATER SYSTEM INSTL	
NO. OF SHEETS	5	SHEET NO.	5
DATE	11/16	REV.	133945