

- RETAINER 81828-01-CHT
- 83699-15-CHT(2)
- 83699-16-CHT
- 83699-19-CHT(3)
- SINK-SST, DOUBLE 110654-01-000(US/CAN)
- STRAINER 92303-01-000(2)
- SEAL 91255-02-000 (A/R)
- RETAINER 105497-02-000(6)
- SCREW G67-06-10U(22)
- WASHER-RUBBER 127440-02-CHT(2)

- SINK 105921-01-CHT
- SPACER 105218-01-CHT
- STRAINER 106116-01-CHT
- SEAL 91255-02-000 (A/R)

- CLAMP-HOSE 62401-05-000
- BRACKET-PIPE 95061-01-000(2)

- SHOWER INSTL-ENCLOSURE 127290-01-000
- DRAIN 120981-01-CHT
- 69610-01-000
- WASHER 127440-02-CHT
- TAILPIECE 11069-02-000
- NUT 130403-01-000

- LUMBER 942-00-100
- CABLE TIE 108946-01-000

- PLYWOOD 860-51-282 (270 X 270)

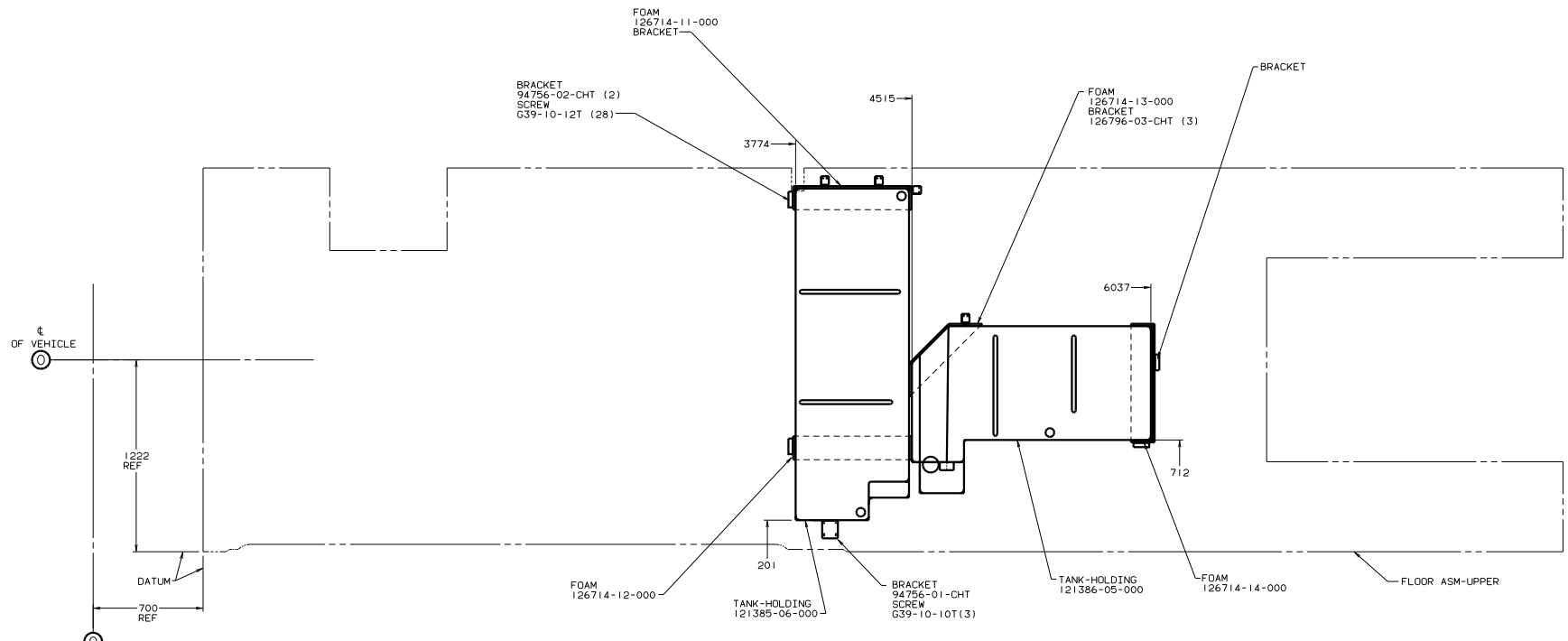
- CLAMP-HOSE 62401-05-000
- BRACKET-PIPE 95061-01-000(2)

- TOILET 85321-04-000
- CLAMP 62401-05-000

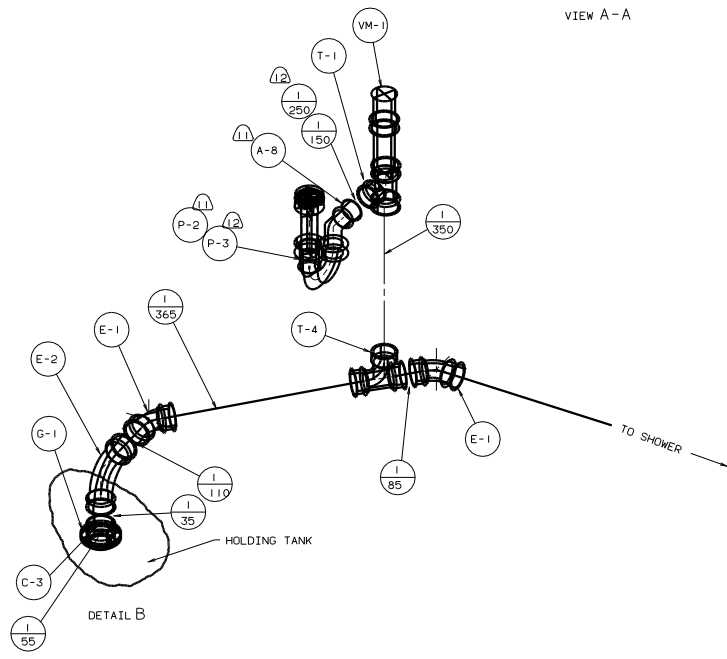
- 15 BRACKET ON PLATFORM ASM MAY NEED TO BE REPOSITIONED.
- 14 CLAMP TO CABINET (2 PLACES).
- 13 TRIM TO FIT.
- 12A CSA ONLY.
- 11 US ONLY.
- 10 SECURE VENT TUBES TO FLOOR WITH BRACKET.
- 9 VENT PIPE MUST PROJECT 51 MIN AND 63.5 MAX ABOVE ROOF FOR PROPER FIT AND FUNCTION.
- 8. SEE DWG 61607-01-000 FOR INSTL OF GROMMETS.
- 7. SEAL ALL AROUND SHOWER WITH SILICONE.
- 6. FOR CANADIAN UNITS EACH HOLDING TANK SHALL HAVE A CSA APPROVAL STAMPED NEAR THE TAMPO APPROVAL.
- 5. EXPOSED PIPE ABOVE ROOF TO BE PAINTED WITH 37163-01-000.
- 4. ALL EXTERIOR OPENINGS AROUND PIPE TO BE SEALED WITH 11074-01-000.
- 3. ALL PIPE AND FITTINGS TO BE ASSEMBLED WITH SOLVENT 4020-01-000.
- 2. SLOPE OF TRAP ARM MUST BE 6 PER 305.
- 1. SLOPE OF HORIZONTAL PIPING TO BE 6 PER 305 MIN.

- 18 SECURE PIPES TO CABINET USING WIRE TIE 108046-02-000 AND SCREW G67-10-12U(8).
- 17 COVER PIPE FROM ELBOW UP USING SCRAP 9CARPT-02-000 WHEN AVAILABLE OR 9CARPT-02-000 (150 X 178).
- 16 OPTION 41K.

DATE		PROPOSED TOLERANCES ARE:		MATERIAL:	
DWG	DATE	WHOLE DIM (IN)	+		
P.E.	DATE	FRACTIONAL DIM (IN)	+		
DWG	DATE	2ND-PLANE DIM (IN)	+		
P.L.C.	DATE	3RD-PLANE DIM (IN)	+		
DWG	DATE	3RD-PLANE DIM (IN)	+		
LAYER K136W08		TITLE		98 L36W0.PUSHER	
FOR DRAINAGE CALLOUTS SEE DWG NO. 116229-01-000		DRAWN BY		DRAINAGE SYSTEM INSTL	
ALL DIMENSIONS ARE IN MILLIMETERS		SHEET 1 OF 2		NO 125998	



VIEW A-A

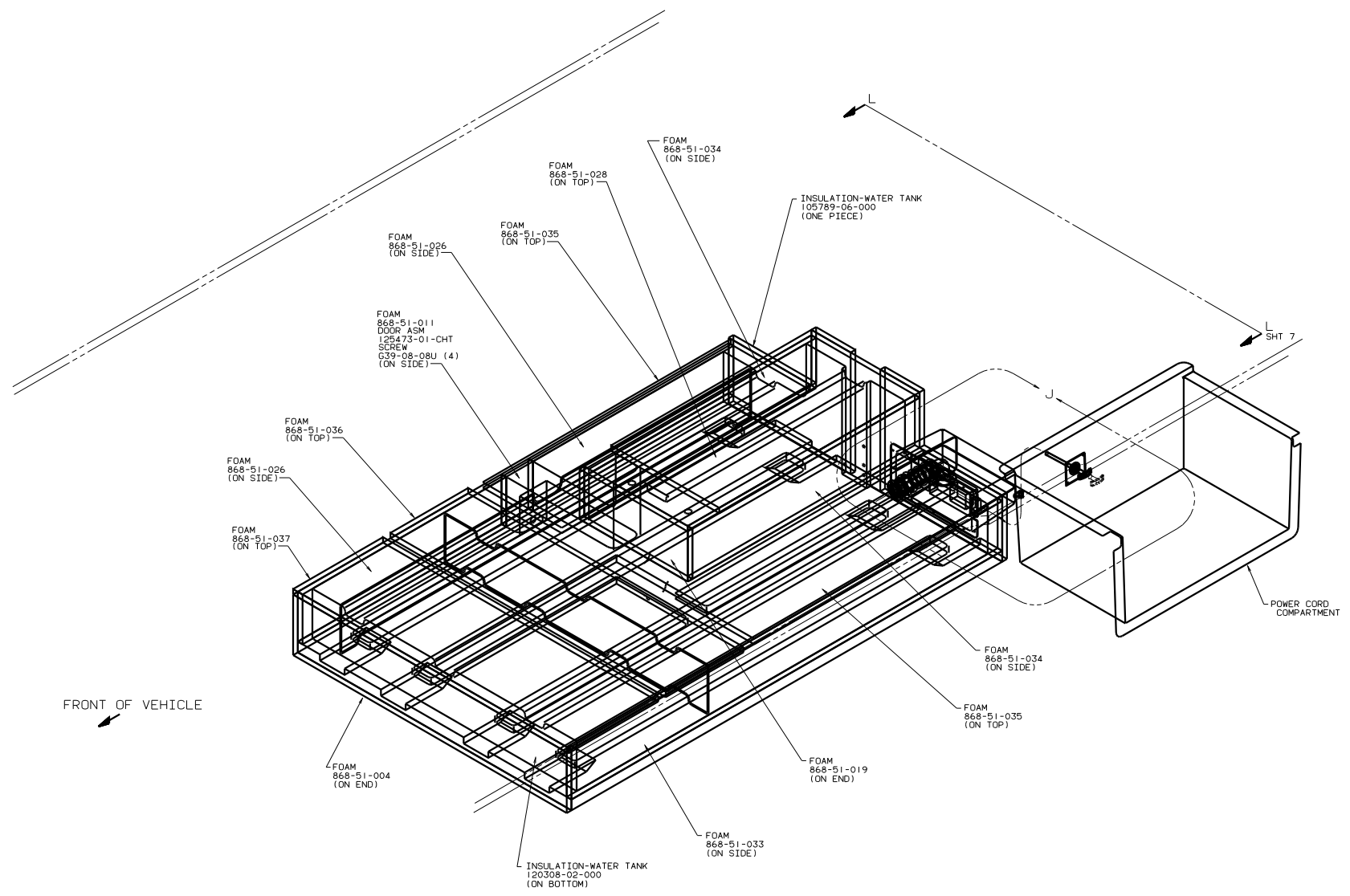


DETAIL B

98 L36WQ, PUSHER

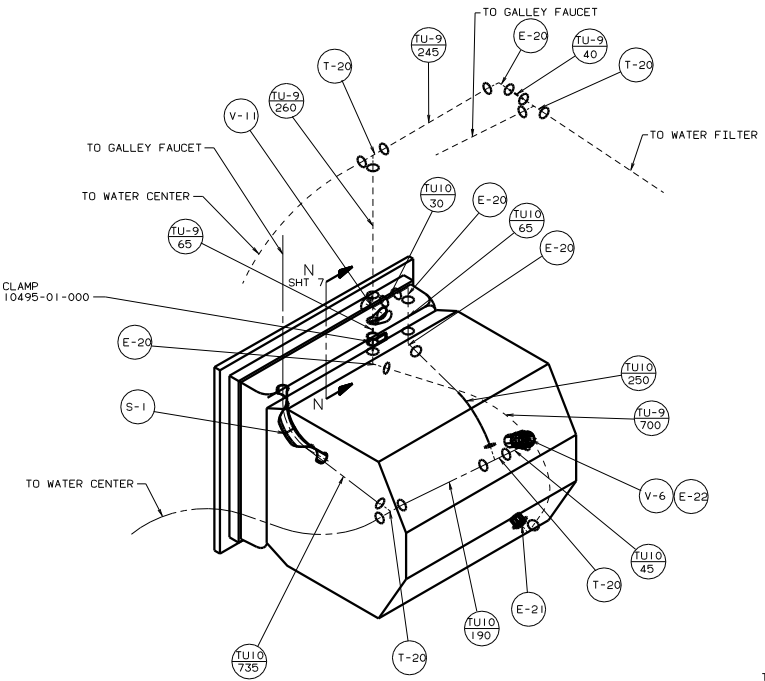
TITLE: DRAINAGE SYSTEM INSUL		DWG NO: 125998	
DATE: 2/05	BY: J.E.	CHK: J.E.	APP: J.E.
SHEET 2 OF 2		PAGE 1	



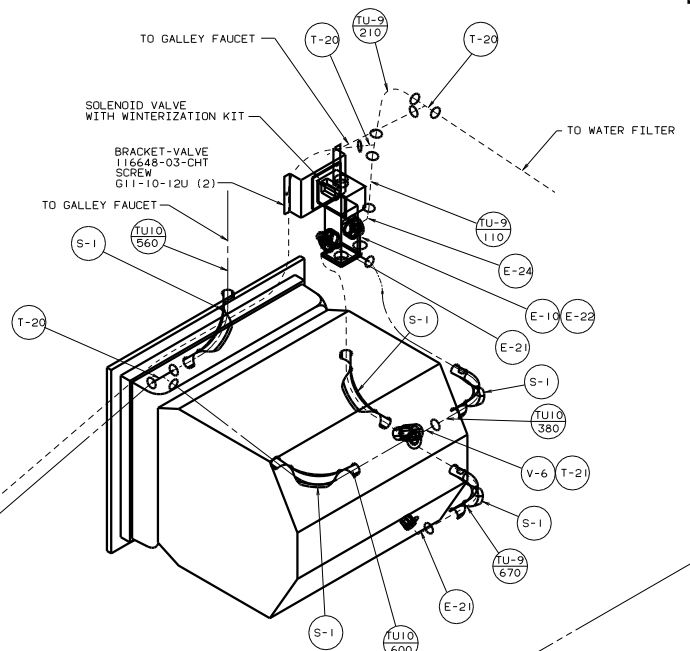


98 L36WL PUSHER

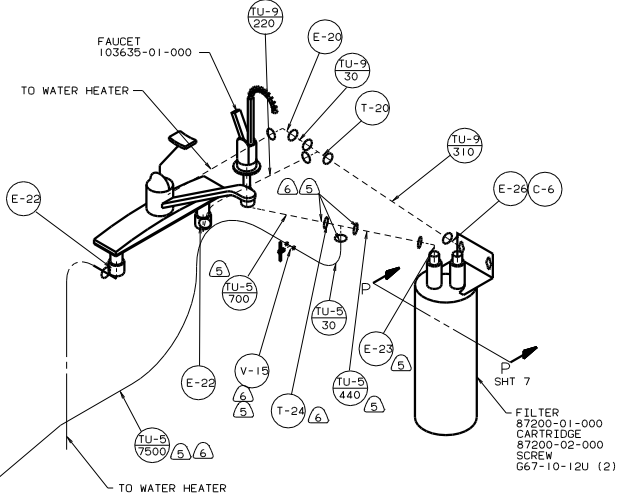
TITLE: WATER SYSTEM INSTL	
DATE: 11/16/05	REV: 1.0
SHEET: 2 OF 7	DWG NO: 125997



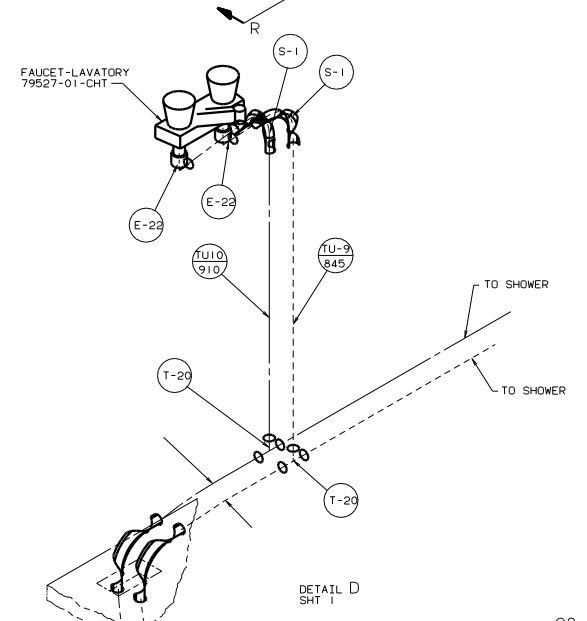
VIEW B-B  
SHT 1  
53J-WATER HEATER BYPASS VALVE



VIEW B-B  
SHT 1  
530-WATER HEATER AUTOMATIC WINTERIZER



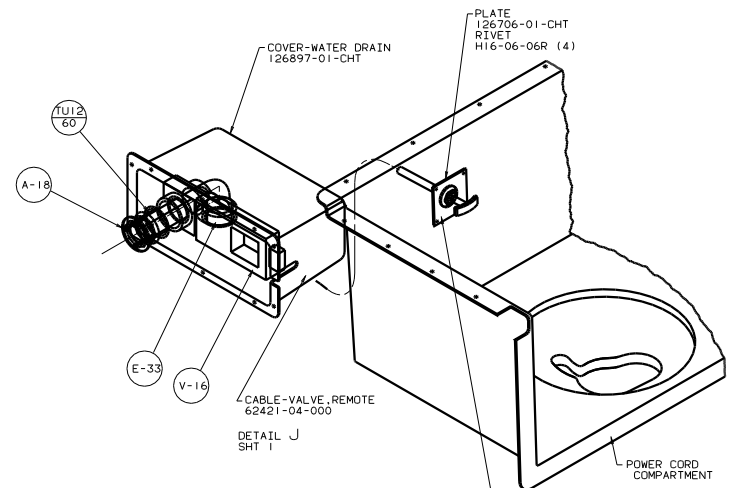
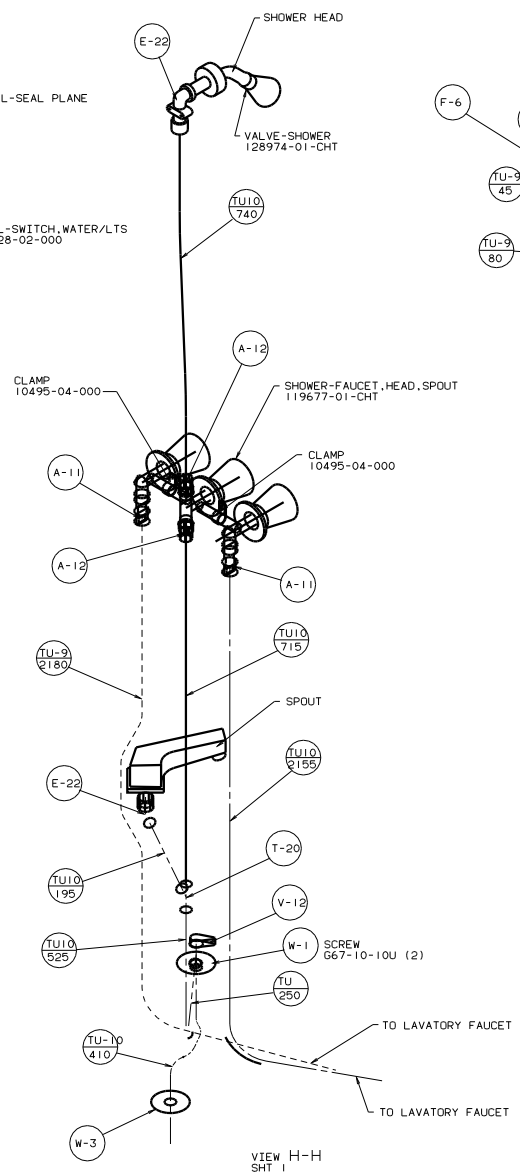
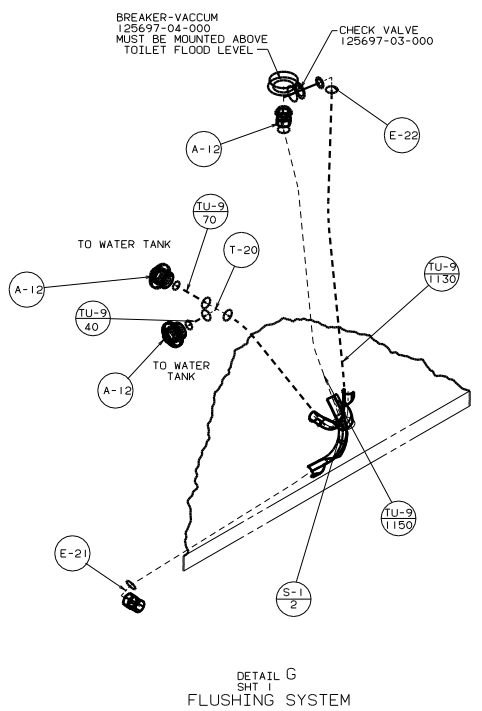
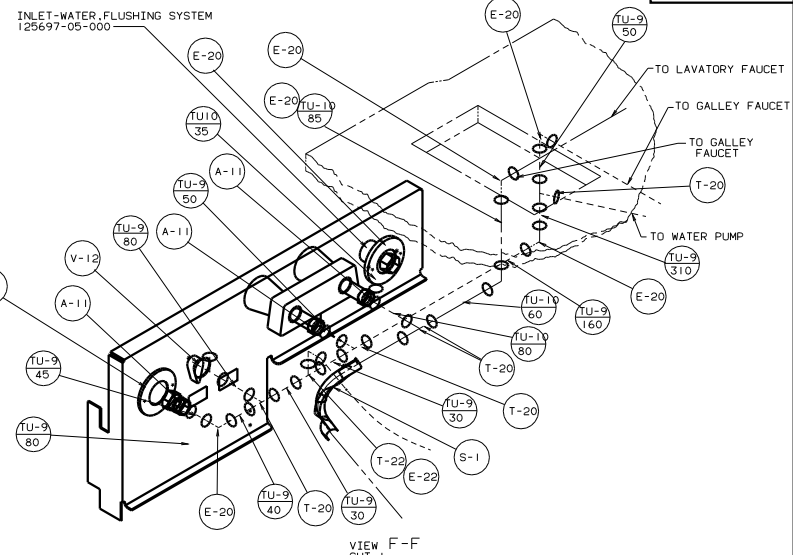
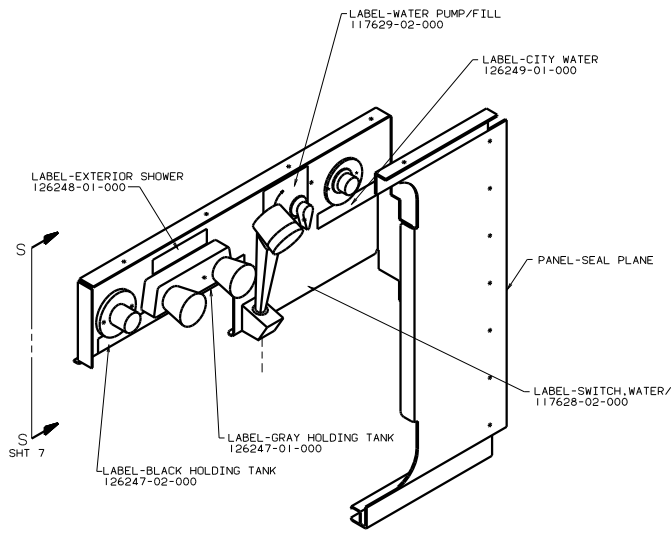
VIEW C-C  
SHT 1  
29B-WATER PURIFIER



DETAIL D  
SHT 1

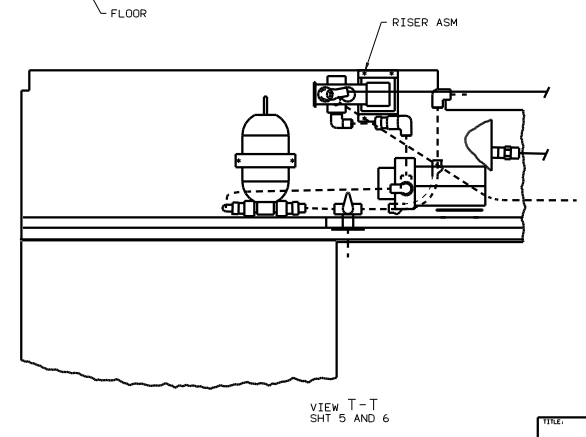
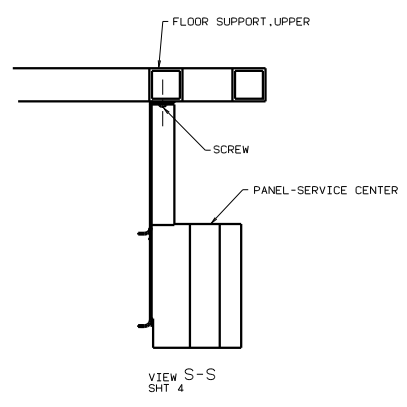
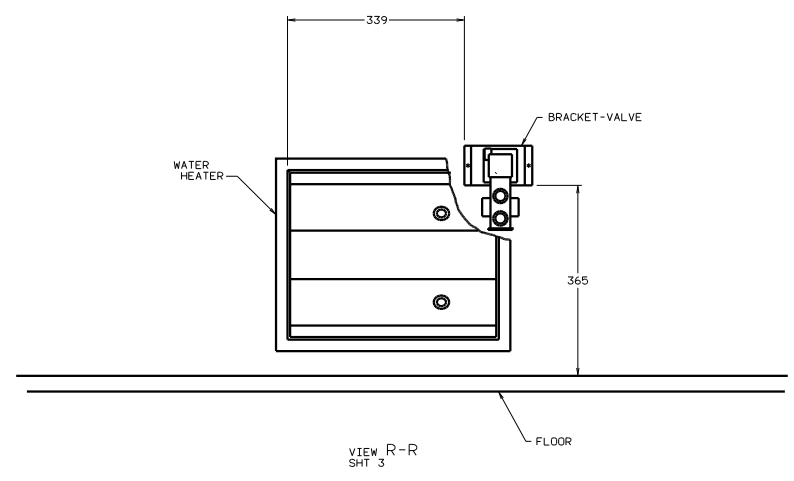
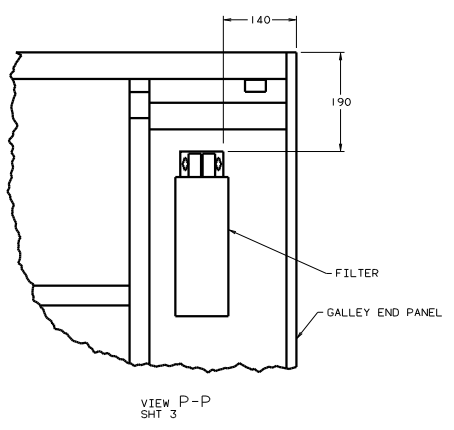
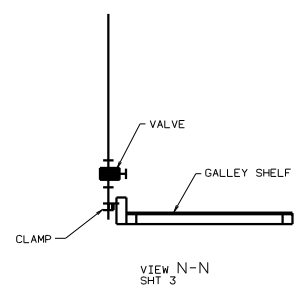
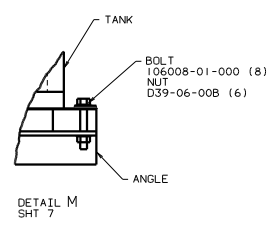
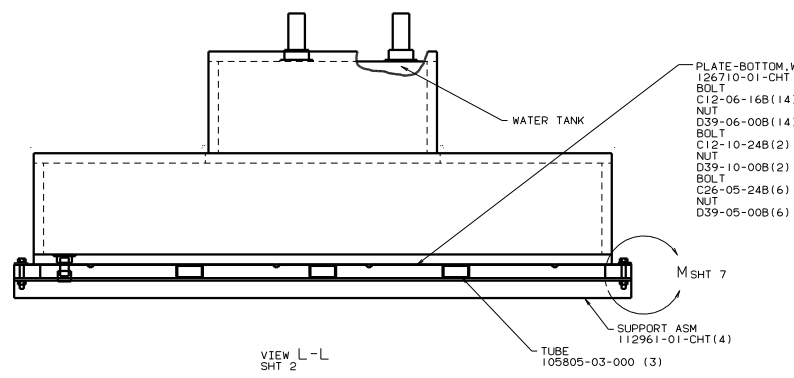
98 L36WL PUSHER

TITLE		WATER SYSTEM INSTL	
30	NO SCALE	1/2	1/2
SHEET 3 OF 7		125997	









98 L36WL PUSHER	
TITLE: WATER SYSTEM INSTL	
NO. OF SHEETS	TOTAL SHEETS
7	7
1	1
125997	