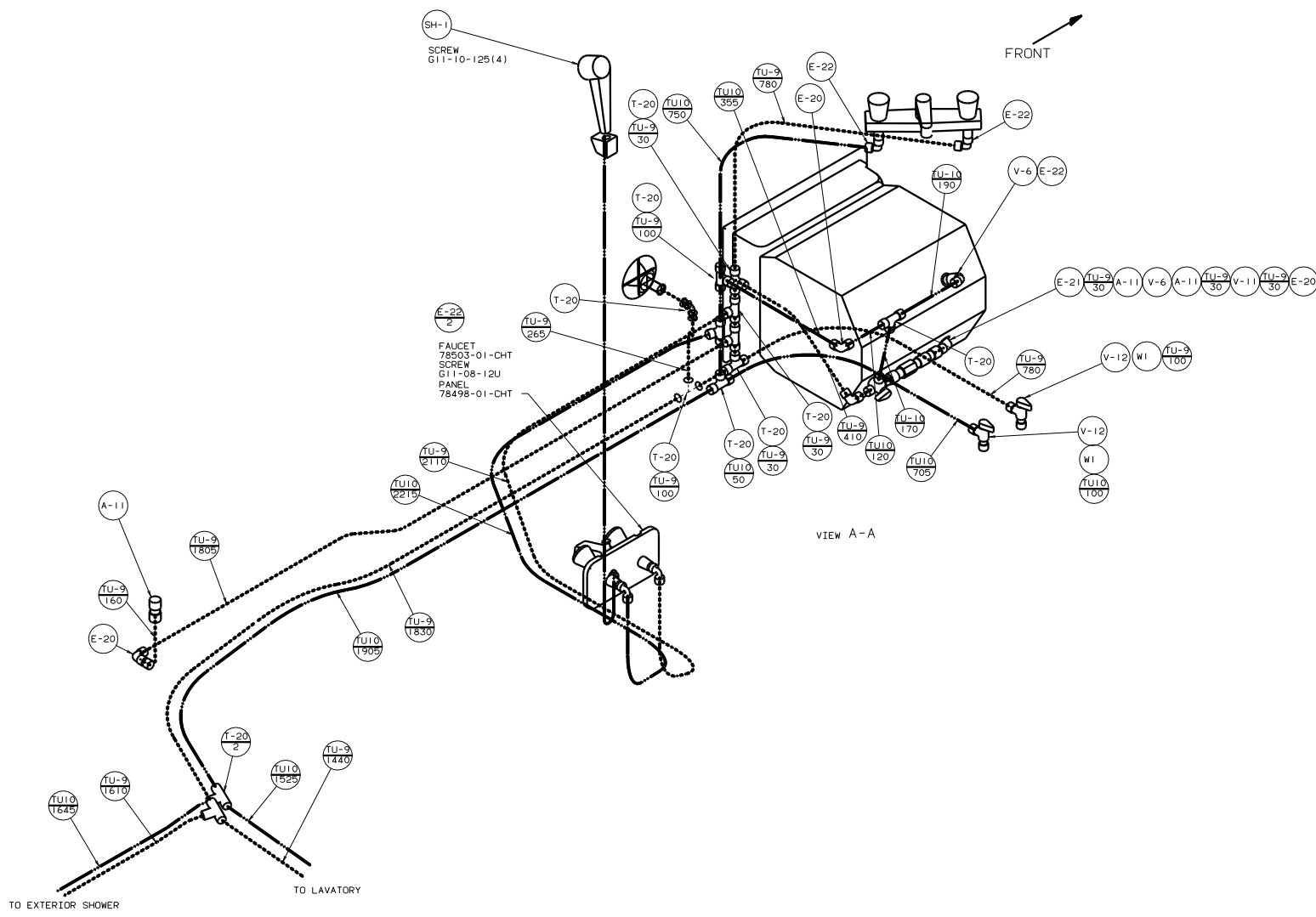


- 1. SLOPE OF HORIZONTAL PIPING TO BE 6 PER 305 MIN.
- 2. SLOPE OF TRAP ARM MUST BE 6 PER 305.
- 3. ALL PIPE AND FITTINGS TO BE ASSEMBLED WITH SOLVENT 4020-01-000.
- 4. ALL EXTERIOR OPENINGS AROUND PIPE TO BE SEALED WITH 69637-01-000.
- 5. EXPOSED PIPE ABOVE ROOF TO BE PAINTED 37163-01-000.
- 6. FOR CAN UNITS EACH HOLDING TANK SHALL HAVE A CSA APPROVAL STAMPED NEAR THE IAMPO APPROVAL.
- 7. SEAL ALL AROUND SHOWER WITH SILICONE 78474-01-CHT.
- 8. SEE DWG 61607-01-000 FOR INSTL OF GROMMET.
- 9. VENT PIPE MUST PROJECT 51 MM MIN AND 63.5 MM MAX ABOVE ROOF FOR PROPER FIT AND FUNCTION.
- 10. SECURE VENT TUBES TO FLOOR.
- 11. TRIM P-TRAP EXTENSION TO FIT.
- 12. SECURE PIPES TO CABINET USING WIRE TIE 108046-02-000 AND SCREW G67-10-12U(8).

FOR DRAINAGE CALLOUTS SEE DWG NO. 116229-01-000

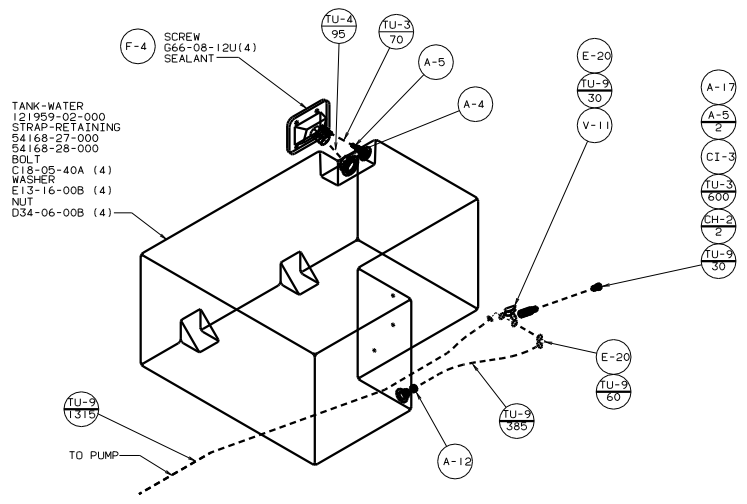
WINNEBAGO		98 F29W0
DATE	UNDESIGNED TOLERANCES ARE:	MATERIAL
DATE	WHOLE DIM (1)	FRACTION
DATE	ONE-PLACE (1)	ONE-PLACE (1)
DATE	TWO-PLACE (1)	TWO-PLACE (1)
DATE	THREE-PLACE (1)	THREE-PLACE (1)
DATE	FOUR-PLACE (1)	FOUR-PLACE (1)
DATE	FIVE-PLACE (1)	FIVE-PLACE (1)
DATE	SIX-PLACE (1)	SIX-PLACE (1)
DATE	SEVEN-PLACE (1)	SEVEN-PLACE (1)
DATE	EIGHT-PLACE (1)	EIGHT-PLACE (1)
DATE	NINE-PLACE (1)	NINE-PLACE (1)
DATE	TEN-PLACE (1)	TEN-PLACE (1)
DATE	ELEVEN-PLACE (1)	ELEVEN-PLACE (1)
DATE	TWELVE-PLACE (1)	TWELVE-PLACE (1)
DATE	THIRTEEN-PLACE (1)	THIRTEEN-PLACE (1)
DATE	FOURTEEN-PLACE (1)	FOURTEEN-PLACE (1)
DATE	FIFTEEN-PLACE (1)	FIFTEEN-PLACE (1)
DATE	SIXTEEN-PLACE (1)	SIXTEEN-PLACE (1)
DATE	SEVENTEEN-PLACE (1)	SEVENTEEN-PLACE (1)
DATE	EIGHTEEN-PLACE (1)	EIGHTEEN-PLACE (1)
DATE	NINETEEN-PLACE (1)	NINETEEN-PLACE (1)
DATE	TWENTY-PLACE (1)	TWENTY-PLACE (1)
DATE	TWENTY-ONE-PLACE (1)	TWENTY-ONE-PLACE (1)
DATE	TWENTY-TWO-PLACE (1)	TWENTY-TWO-PLACE (1)
DATE	TWENTY-THREE-PLACE (1)	TWENTY-THREE-PLACE (1)
DATE	TWENTY-FOUR-PLACE (1)	TWENTY-FOUR-PLACE (1)
DATE	TWENTY-FIVE-PLACE (1)	TWENTY-FIVE-PLACE (1)
DATE	TWENTY-SIX-PLACE (1)	TWENTY-SIX-PLACE (1)
DATE	TWENTY-SEVEN-PLACE (1)	TWENTY-SEVEN-PLACE (1)
DATE	TWENTY-EIGHT-PLACE (1)	TWENTY-EIGHT-PLACE (1)
DATE	TWENTY-NINE-PLACE (1)	TWENTY-NINE-PLACE (1)
DATE	THIRTY-PLACE (1)	THIRTY-PLACE (1)
DATE	THIRTY-ONE-PLACE (1)	THIRTY-ONE-PLACE (1)
DATE	THIRTY-TWO-PLACE (1)	THIRTY-TWO-PLACE (1)
DATE	THIRTY-THREE-PLACE (1)	THIRTY-THREE-PLACE (1)
DATE	THIRTY-FOUR-PLACE (1)	THIRTY-FOUR-PLACE (1)
DATE	THIRTY-FIVE-PLACE (1)	THIRTY-FIVE-PLACE (1)
DATE	THIRTY-SIX-PLACE (1)	THIRTY-SIX-PLACE (1)
DATE	THIRTY-SEVEN-PLACE (1)	THIRTY-SEVEN-PLACE (1)
DATE	THIRTY-EIGHT-PLACE (1)	THIRTY-EIGHT-PLACE (1)
DATE	THIRTY-NINE-PLACE (1)	THIRTY-NINE-PLACE (1)
DATE	FOURTY-PLACE (1)	FOURTY-PLACE (1)
DATE	FOURTY-ONE-PLACE (1)	FOURTY-ONE-PLACE (1)
DATE	FOURTY-TWO-PLACE (1)	FOURTY-TWO-PLACE (1)
DATE	FOURTY-THREE-PLACE (1)	FOURTY-THREE-PLACE (1)
DATE	FOURTY-FOUR-PLACE (1)	FOURTY-FOUR-PLACE (1)
DATE	FOURTY-FIVE-PLACE (1)	FOURTY-FIVE-PLACE (1)
DATE	FOURTY-SIX-PLACE (1)	FOURTY-SIX-PLACE (1)
DATE	FOURTY-SEVEN-PLACE (1)	FOURTY-SEVEN-PLACE (1)
DATE	FOURTY-EIGHT-PLACE (1)	FOURTY-EIGHT-PLACE (1)
DATE	FOURTY-NINE-PLACE (1)	FOURTY-NINE-PLACE (1)
DATE	FIFTY-PLACE (1)	FIFTY-PLACE (1)
DATE	FIFTY-ONE-PLACE (1)	FIFTY-ONE-PLACE (1)
DATE	FIFTY-TWO-PLACE (1)	FIFTY-TWO-PLACE (1)
DATE	FIFTY-THREE-PLACE (1)	FIFTY-THREE-PLACE (1)
DATE	FIFTY-FOUR-PLACE (1)	FIFTY-FOUR-PLACE (1)
DATE	FIFTY-FIVE-PLACE (1)	FIFTY-FIVE-PLACE (1)
DATE	FIFTY-SIX-PLACE (1)	FIFTY-SIX-PLACE (1)
DATE	FIFTY-SEVEN-PLACE (1)	FIFTY-SEVEN-PLACE (1)
DATE	FIFTY-EIGHT-PLACE (1)	FIFTY-EIGHT-PLACE (1)
DATE	FIFTY-NINE-PLACE (1)	FIFTY-NINE-PLACE (1)
DATE	SIXTY-PLACE (1)	SIXTY-PLACE (1)
DATE	SIXTY-ONE-PLACE (1)	SIXTY-ONE-PLACE (1)
DATE	SIXTY-TWO-PLACE (1)	SIXTY-TWO-PLACE (1)
DATE	SIXTY-THREE-PLACE (1)	SIXTY-THREE-PLACE (1)
DATE	SIXTY-FOUR-PLACE (1)	SIXTY-FOUR-PLACE (1)
DATE	SIXTY-FIVE-PLACE (1)	SIXTY-FIVE-PLACE (1)
DATE	SIXTY-SIX-PLACE (1)	SIXTY-SIX-PLACE (1)
DATE	SIXTY-SEVEN-PLACE (1)	SIXTY-SEVEN-PLACE (1)
DATE	SIXTY-EIGHT-PLACE (1)	SIXTY-EIGHT-PLACE (1)
DATE	SIXTY-NINE-PLACE (1)	SIXTY-NINE-PLACE (1)
DATE	SEVENTY-PLACE (1)	SEVENTY-PLACE (1)
DATE	SEVENTY-ONE-PLACE (1)	SEVENTY-ONE-PLACE (1)
DATE	SEVENTY-TWO-PLACE (1)	SEVENTY-TWO-PLACE (1)
DATE	SEVENTY-THREE-PLACE (1)	SEVENTY-THREE-PLACE (1)
DATE	SEVENTY-FOUR-PLACE (1)	SEVENTY-FOUR-PLACE (1)
DATE	SEVENTY-FIVE-PLACE (1)	SEVENTY-FIVE-PLACE (1)
DATE	SEVENTY-SIX-PLACE (1)	SEVENTY-SIX-PLACE (1)
DATE	SEVENTY-SEVEN-PLACE (1)	SEVENTY-SEVEN-PLACE (1)
DATE	SEVENTY-EIGHT-PLACE (1)	SEVENTY-EIGHT-PLACE (1)
DATE	SEVENTY-NINE-PLACE (1)	SEVENTY-NINE-PLACE (1)
DATE	EIGHTY-PLACE (1)	EIGHTY-PLACE (1)
DATE	EIGHTY-ONE-PLACE (1)	EIGHTY-ONE-PLACE (1)
DATE	EIGHTY-TWO-PLACE (1)	EIGHTY-TWO-PLACE (1)
DATE	EIGHTY-THREE-PLACE (1)	EIGHTY-THREE-PLACE (1)
DATE	EIGHTY-FOUR-PLACE (1)	EIGHTY-FOUR-PLACE (1)
DATE	EIGHTY-FIVE-PLACE (1)	EIGHTY-FIVE-PLACE (1)
DATE	EIGHTY-SIX-PLACE (1)	EIGHTY-SIX-PLACE (1)
DATE	EIGHTY-SEVEN-PLACE (1)	EIGHTY-SEVEN-PLACE (1)
DATE	EIGHTY-EIGHT-PLACE (1)	EIGHTY-EIGHT-PLACE (1)
DATE	EIGHTY-NINE-PLACE (1)	EIGHTY-NINE-PLACE (1)
DATE	NINETY-PLACE (1)	NINETY-PLACE (1)
DATE	NINETY-ONE-PLACE (1)	NINETY-ONE-PLACE (1)
DATE	NINETY-TWO-PLACE (1)	NINETY-TWO-PLACE (1)
DATE	NINETY-THREE-PLACE (1)	NINETY-THREE-PLACE (1)
DATE	NINETY-FOUR-PLACE (1)	NINETY-FOUR-PLACE (1)
DATE	NINETY-FIVE-PLACE (1)	NINETY-FIVE-PLACE (1)
DATE	NINETY-SIX-PLACE (1)	NINETY-SIX-PLACE (1)
DATE	NINETY-SEVEN-PLACE (1)	NINETY-SEVEN-PLACE (1)
DATE	NINETY-EIGHT-PLACE (1)	NINETY-EIGHT-PLACE (1)
DATE	NINETY-NINE-PLACE (1)	NINETY-NINE-PLACE (1)
DATE	HUNDRED-PLACE (1)	HUNDRED-PLACE (1)





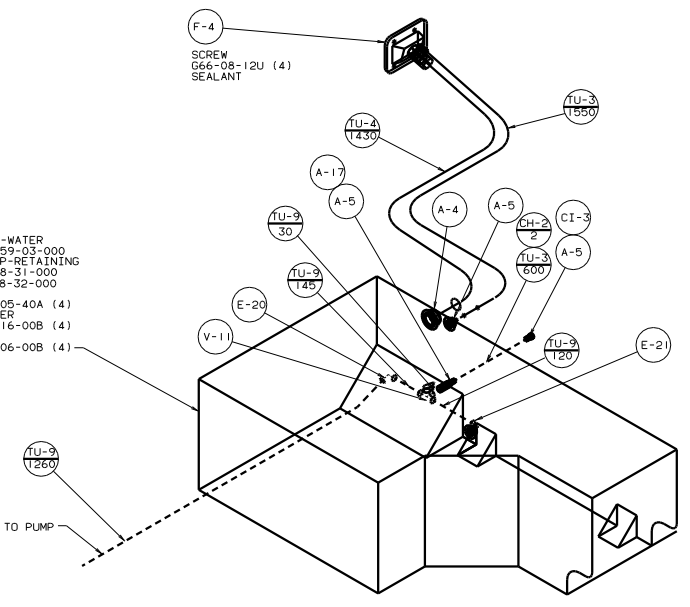
99 F29A

TITLE		WATER SYSTEM INSTL	
NO. OF SHEETS	DATE	REV.	DATE
SHEET 2 OF 3		1.6	129329



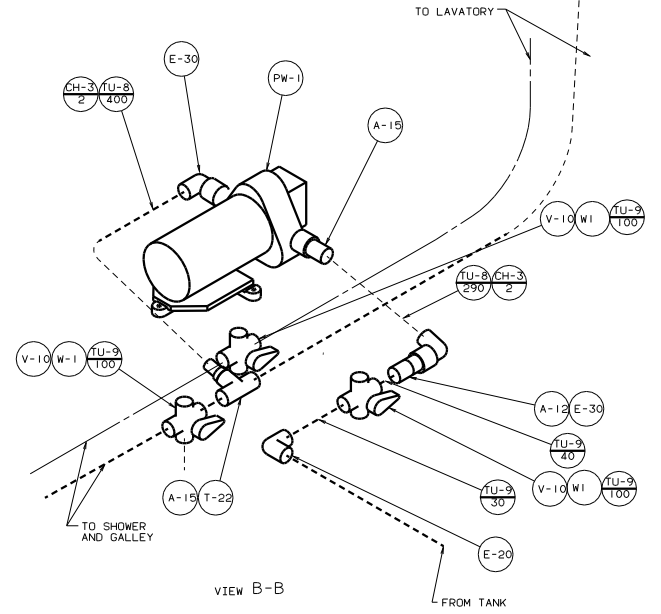
- TANK-WATER  
121959-02-000  
STRAP-RETAINING  
54168-27-000  
54168-28-000  
BOLT  
C18-05-40A (4)  
WASHER  
E13-16-00B (4)  
NUT  
D34-06-00B (4)

DETAIL C  
(TWIN BEDS)  
45G BED-TWINS

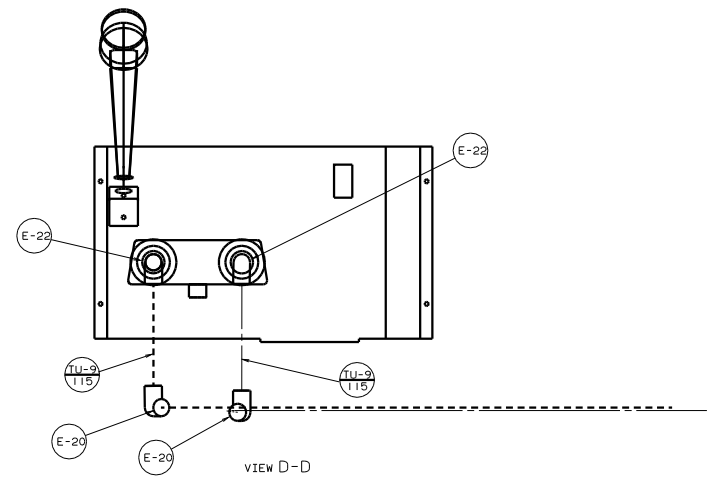


- TANK-WATER  
125359-03-000  
STRAP-RETAINING  
54168-31-000  
54168-32-000  
BOLT  
C18-05-40A (4)  
WASHER  
E13-16-00B (4)  
NUT  
D34-06-00B (4)

DETAIL C  
(QUEEN BED)  
49X BED-QUEEN, CENTERED



VIEW B-B



VIEW D-D

TITLE		99 F29A	
WATER SYSTEM INSTL			
30	NO SCALE	1/8"	1/8"
SHEET 3	OF 3	1/8"	1/8"
		129329	