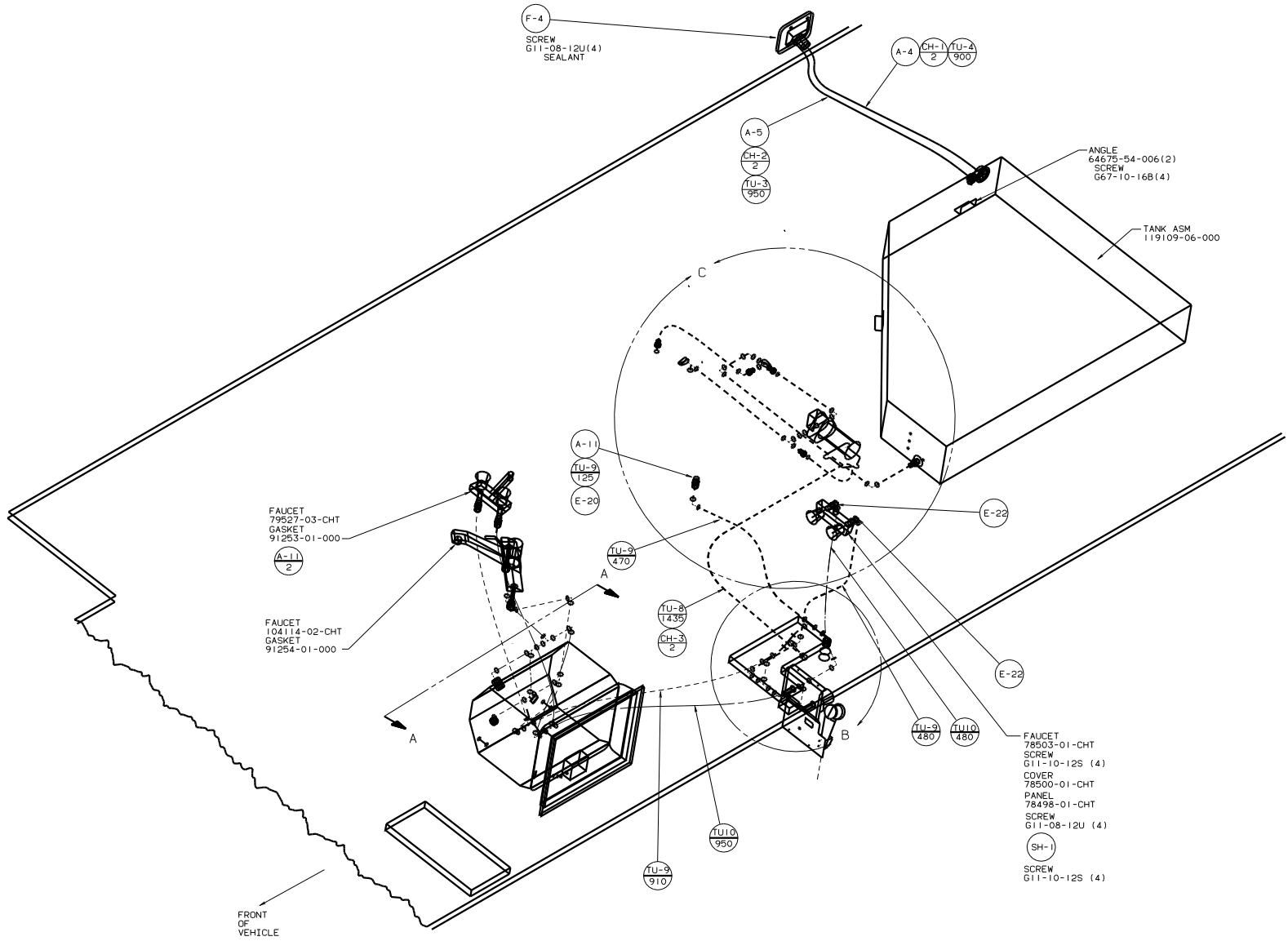


VIEW A-A



FRONT OF VEHICLE

FAUCET  
79527-03-CHT  
GASKET  
91253-01-000  
A-11  
2

FAUCET  
104114-02-CHT  
GASKET  
91254-01-000

FAUCET  
78503-01-CHT  
SCREW  
G11-10-12S (4)  
COVER  
78500-01-CHT  
PANEL  
78498-01-CHT  
SCREW  
G11-08-12U (4)  
SH-1  
SCREW  
G11-10-12S (4)

F-4  
SCREW  
G11-08-12U (4)  
SEALANT

A-4  
CH-1  
TU-4  
2  
900

A-5  
CH-2  
2  
TU-3  
950

ANGLE  
64675-54-006 (2)  
SCREW  
G67-10-16B (4)

TANK ASM  
119109-06-000

A-11  
TU-9  
125  
E-20

TU-9  
470

TU-8  
1435  
CH-3  
2

E-22

E-22

TU-9  
480

TU-10  
480

TU-10  
950

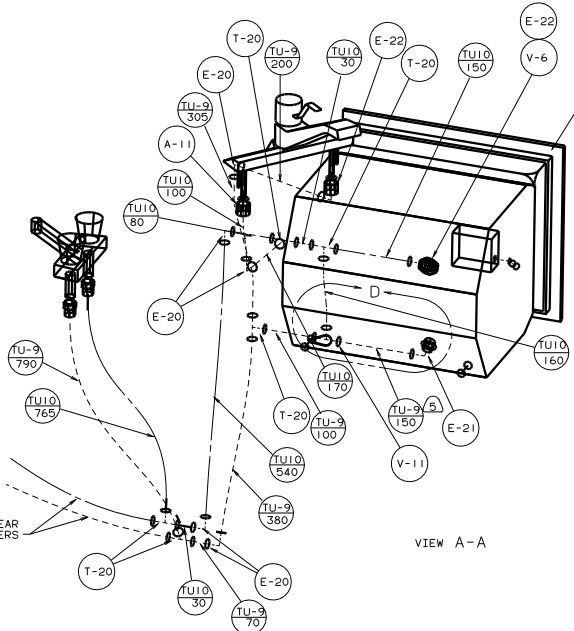
TU-9  
910

- NOTES:
1. PLASTIC FITTINGS TO BE SEALED WITH SEALANT 84456-01-000.
  2. TUBING TO BE INSTALLED WITH SUFFICIENT SLOPE TO PROVIDE DRAINAGE TO NEAREST VALVE.
  3. ALL TUBING TO BE SECURED AT 1200 INTERVALS MAX WITH CLAMP 10495-01-000 OR CLIP 91951-01-000 AND SCREW G67-10-12B.
  - 5 USE WITHOUT MOTOR AID.
  - 4 USE WITH MOTOR AID.

LEGEND	
HOT	—————
COLD	—————

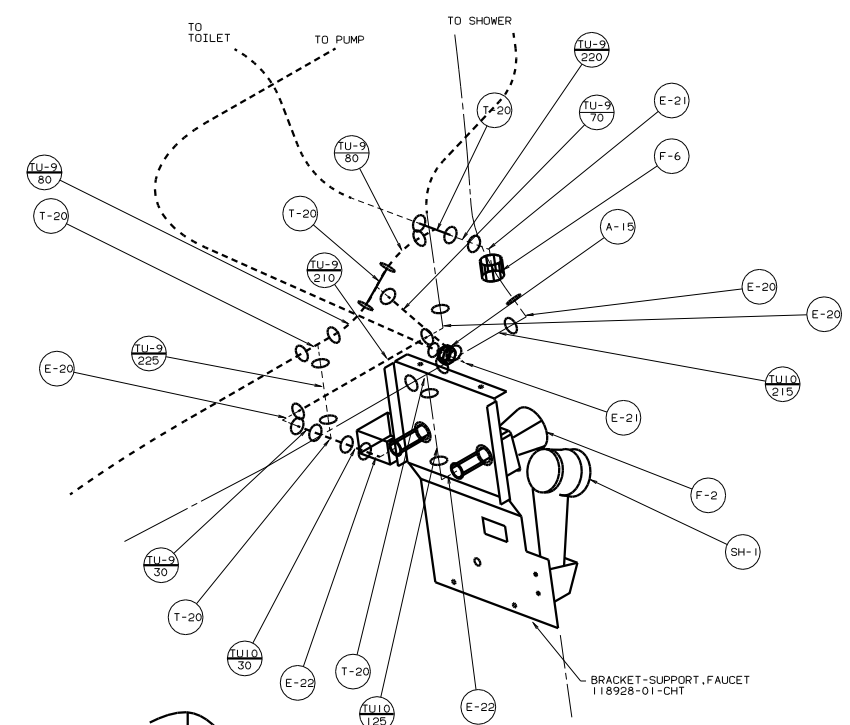
FOR WATER CALLOUTS SEE DWG NO. 116230-01-000

WINNEBAGO		97 431W0
OF IN	DATE	UNSPECIFIED TOLERANCES ARE:
CHP	DATE	WHOLE DIM (IN) .1
D/E	DATE	ONE-PLACE (IN) .01
D/E	DATE	TWO-PLACE (IN) .001
D/E	DATE	ANGLE
COMP	DATE	INDIC. W/OLE PROJECTION
LAYOUT NO. 431W0	TITLE: WATER SYSTEM INSTL	REF: 123311
SHEET 1 OF 2	1/16	1/16

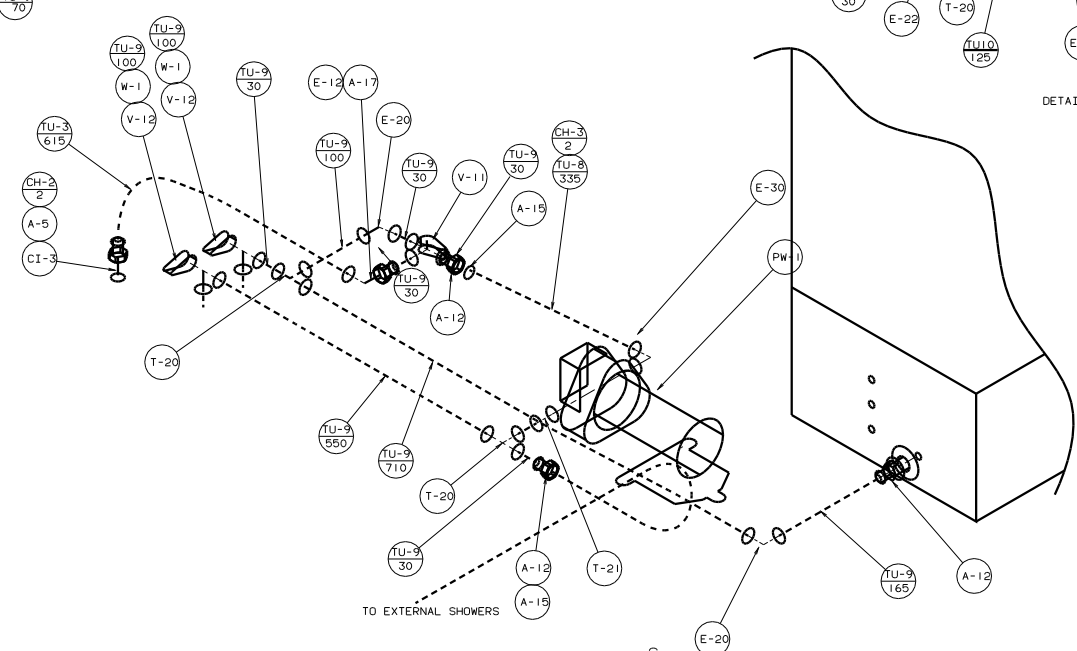


VIEW A-A

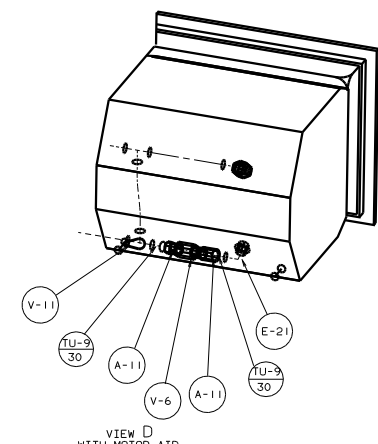
WATER HEATER (5)  
 51391-02-000  
 (ELECTRONIC IGNITION)  
 51391-03-000  
 (WITH MOTOR AID) (A)  
 DOOR  
 78506-01-CHT  
 AL EXTR  
 2726-01-210  
 2726-01-212 (2)  
 SCREW  
 G39-10-169 (18)  
 SEALANT



DETAIL B



DETAIL C



VIEW D WITH MOTOR AID

BRACKET-SUPPORT, FAUCET  
 118928-01-CHT

97 431WQ

TITLE		WATER SYSTEM INSTL	
30	NO SCALE	1/8"	1/8"
SHEET 2 OF 2		1/8"	1/8"
		1/8"	1/8"